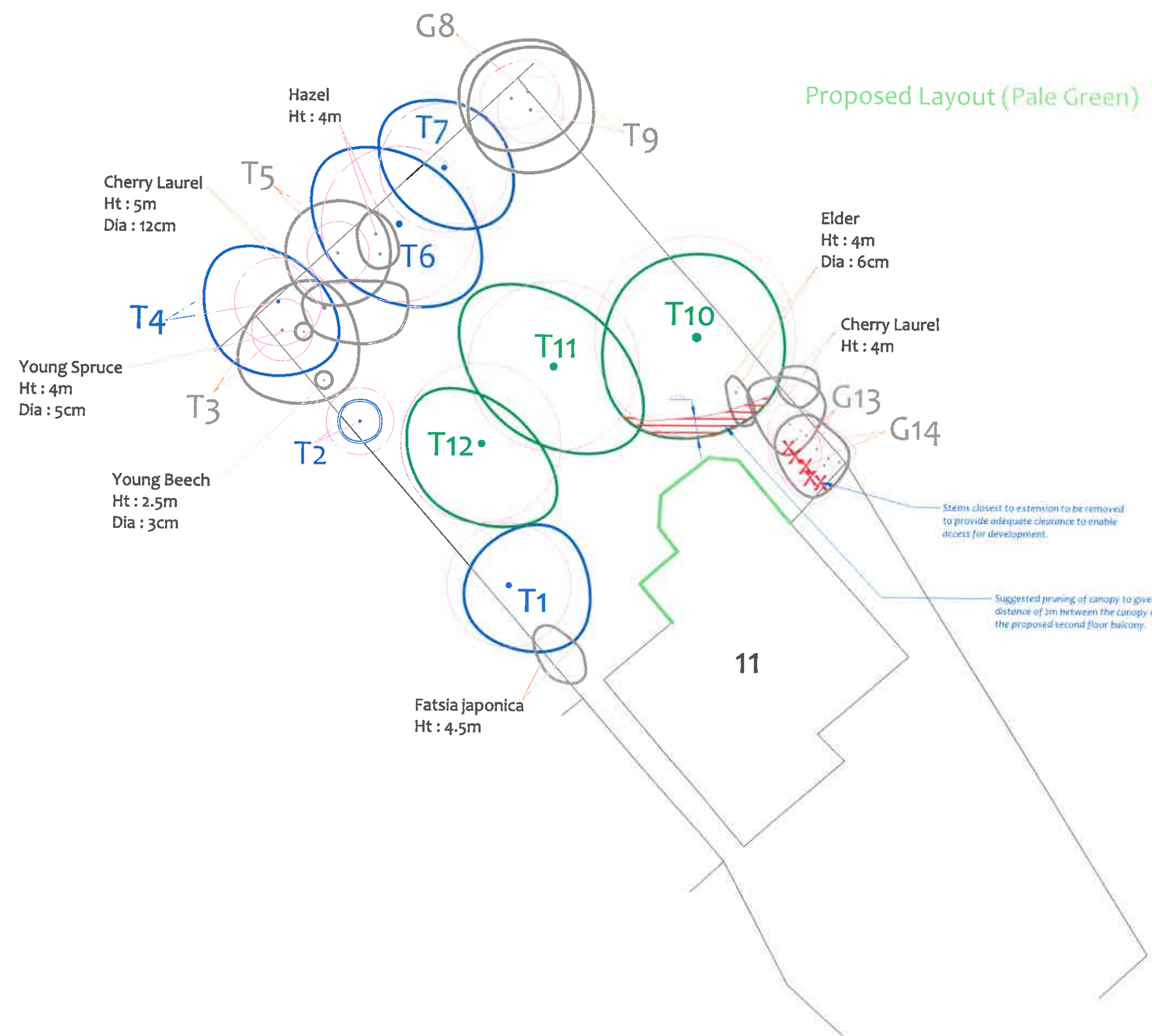




# Tree Removal Plan

(Existing Layout with Proposals Overlaid)

Proposed Layout (Pale Green)



Tree Ref.	Species	Height (m)	Root Protection Area		
			Radius (m)	m <sup>2</sup>	Square (m)
T1	Cherry	5.5	2.9	26	5.1
T2	Spruce	7.5	1.6	8	2.8
T3	Norway Maple	8	1.4	7	2.6
T4	Horse Chestnut	8	2.0	13	3.6
T5	Beech	7	1.4	7	2.6
T6	Alder	11	3.6	41	6.4
T7	Norway Maple	10	3.0	28	5.3
G8	Hazel	5.5	1.4	7	2.6
T9	Rowan	6	1.6	8	2.8
T10	Oak	13	4.7	69	8.3
T11	Oak	12	4.0	49	7.0
T12	Oak	12	3.7	43	6.6
G13	Cotoneaster	5	1.0	3	1.7
G14	Cherry Laurel	5	1.2	5	2.1

**Tree Retention Categories**  
Stems & canopies shown

- Category A tree
- Category B tree
- Category C tree
- Category U tree

Trees of high quality with an estimated life expectancy of 40+ years. Usually large trees with significant presence or smaller trees with excellent form. Retention of these trees is highly desirable.

Trees of moderate quality with a life expectancy of 20+ years. Usually maturing trees, or younger trees with good form. Retention of these trees is desirable though less than Category A trees

Unremarkable trees of low quality and merit. Individual specimens are not considered to be a material planning consideration.

Trees unsuitable for retention due to their very poor condition.

Drawing No: **CCL 09709** / TRP Rev: 1

Title: **Tree Removal Plan**  
(Existing Layout with Proposals Overlaid)

Site: **11 Lundhill Farm Mews**  
**S73 0PJ**

Scale: 1:200

Paper Size: A3

BS 5837 Root Protection Area (radius = 12xstem diameter)

Root Protection Area needing amendment due to site conditions, e.g. presence of existing road or building.

Root Protection Area having been amended to account for site conditions

T1 = Tree No 1    G2 = Group No 2    H3 = Hedge No 3

Tree to be removed to facilitate the proposal

Tree to be removed due to its low quality

Proposed pruning

**MN** = Measured North:  
Canopy spreads are sometimes measured to an approximate N defined by site features. Often more accurate, especially where rows of trees are not aligned N-S or E-W.