

**Notes**

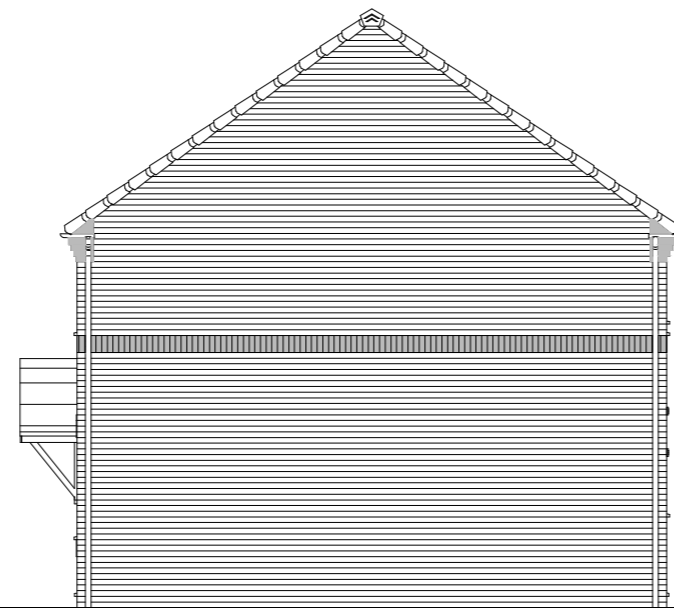
Do not scale from this drawing. If in need of further detail, refer back to the Technical Department.

**FEATURES**

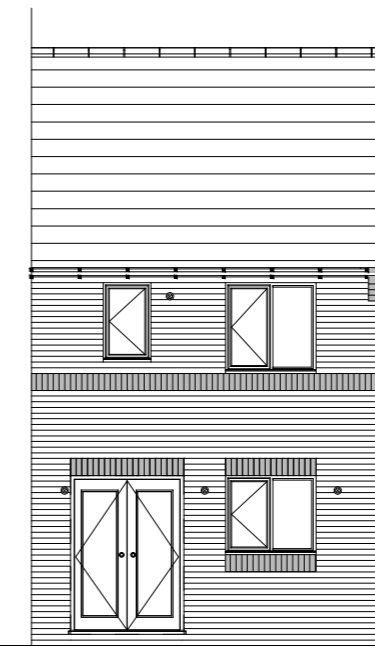
- \* Rolled profile roof tiles.
- \* Dry verge detail.
- \* Exposed rafter feet at eaves.
- \* Flat brick soldier arches.
- \* Cottage style windows.
- \* Brick cills.
- \* Cottage style main entrance door, with dual pitch canopy over on "gallows brackets"
- \* Soldier band course at 3600mm above dpc
- \* Brick quoins
- \* Vertical panel garage door
- \* Dark brick below DPC



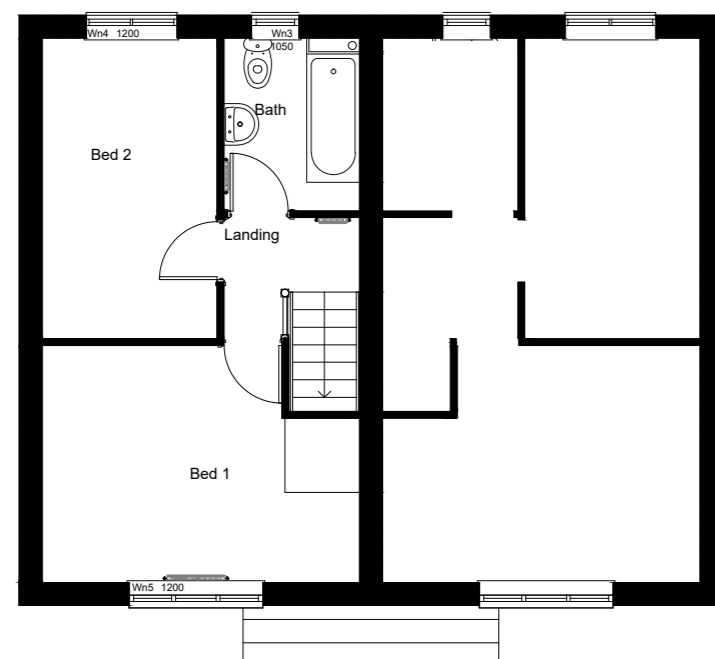
FRONT ELEVATION



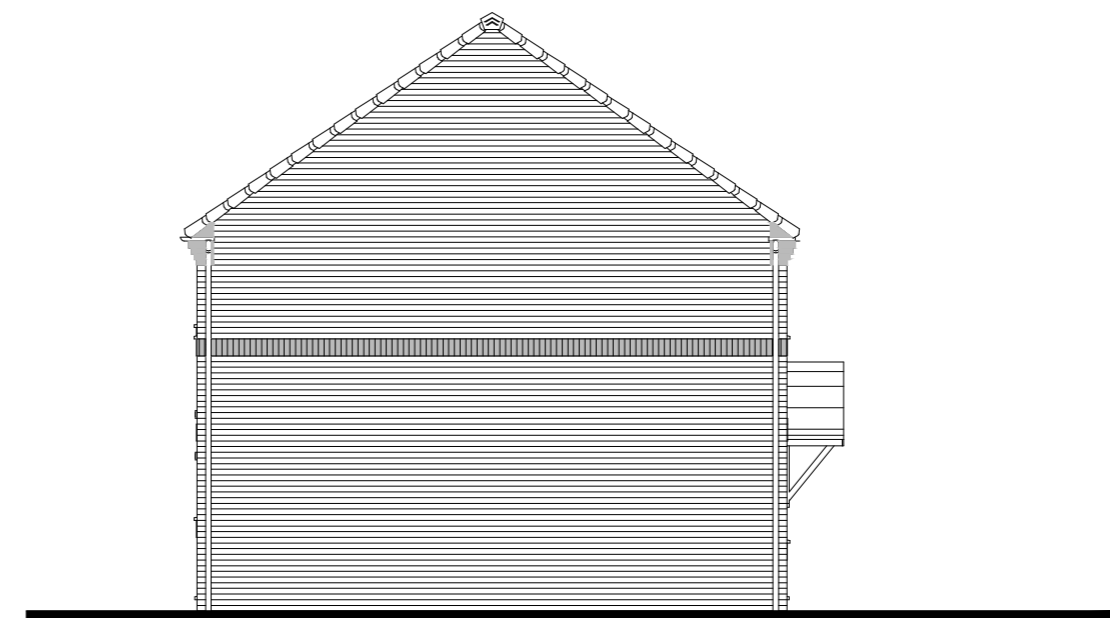
SIDE ELEVATION



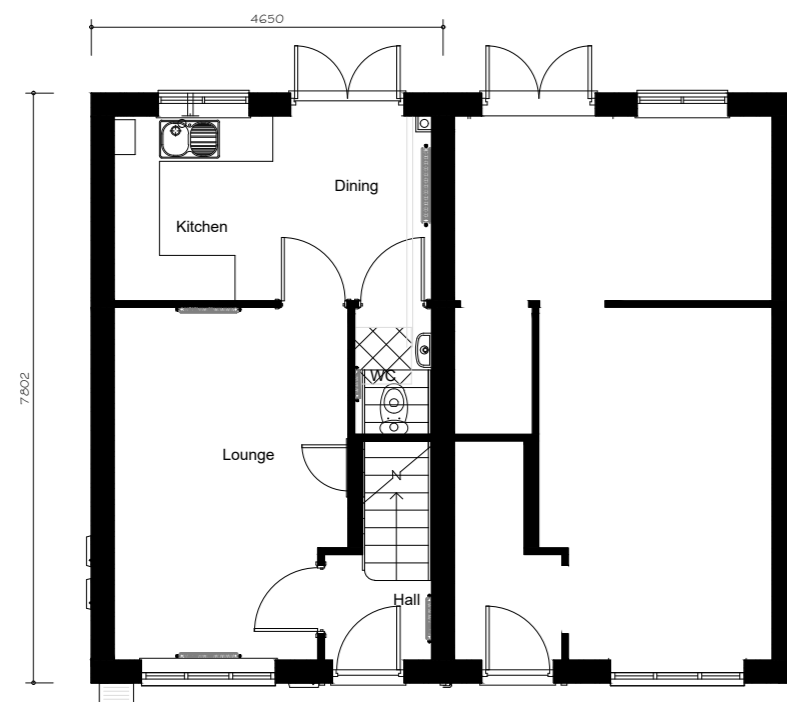
REAR ELEVATION



FIRST FLOOR PLAN



SIDE ELEVATION



GROUND FLOOR PLAN

FLOOR AREA  
60.48m<sup>2</sup>, 651ft<sup>2</sup>



C02	Canopy styles corrected	08.06.21
C01	Issued for construction	21.05.21
P02	Rear window confirmed to have soldier course	19.04.21
P01	Initial issue	22.03.21
Rev.	Comments	Date

**gleeson**

Gleeson Homes (Head Office)  
Unit 5, Europa Court | Sheffield Business Park | Sheffield |  
South Yorkshire | S9 1XE

01142 612900

www.gleesonhomes.co.uk

Project:

201 House Type  
Rural

Title:

Planning Drawing

Scale:	Date:	Drawn:	Checked:
1:100 @ A2	22.03.21	JJ	DR

Drawing No:	Revision:
21-201-R-0001	C02