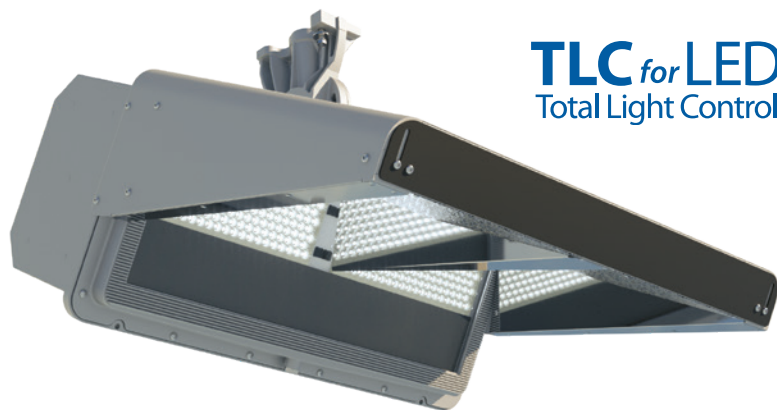


# Light·Structure System™

## 5 Easy Pieces™

Complete System from  
Foundation to Poletop



**TLC for LED™**  
Total Light Control™



All components are designed to work together . . .  
factory built, wired, aimed, and tested  
to assure reliable, trouble-free operation.

Covered by a 10-year product assurance and warranty  
programme with guaranteed light levels, parts and labour  
for maintenance, system monitoring, and 24/7 support  
from our Control-Link Central™ service center.

For your  
**BUDGET,**  
for the  
**ENVIRONMENT.**

