

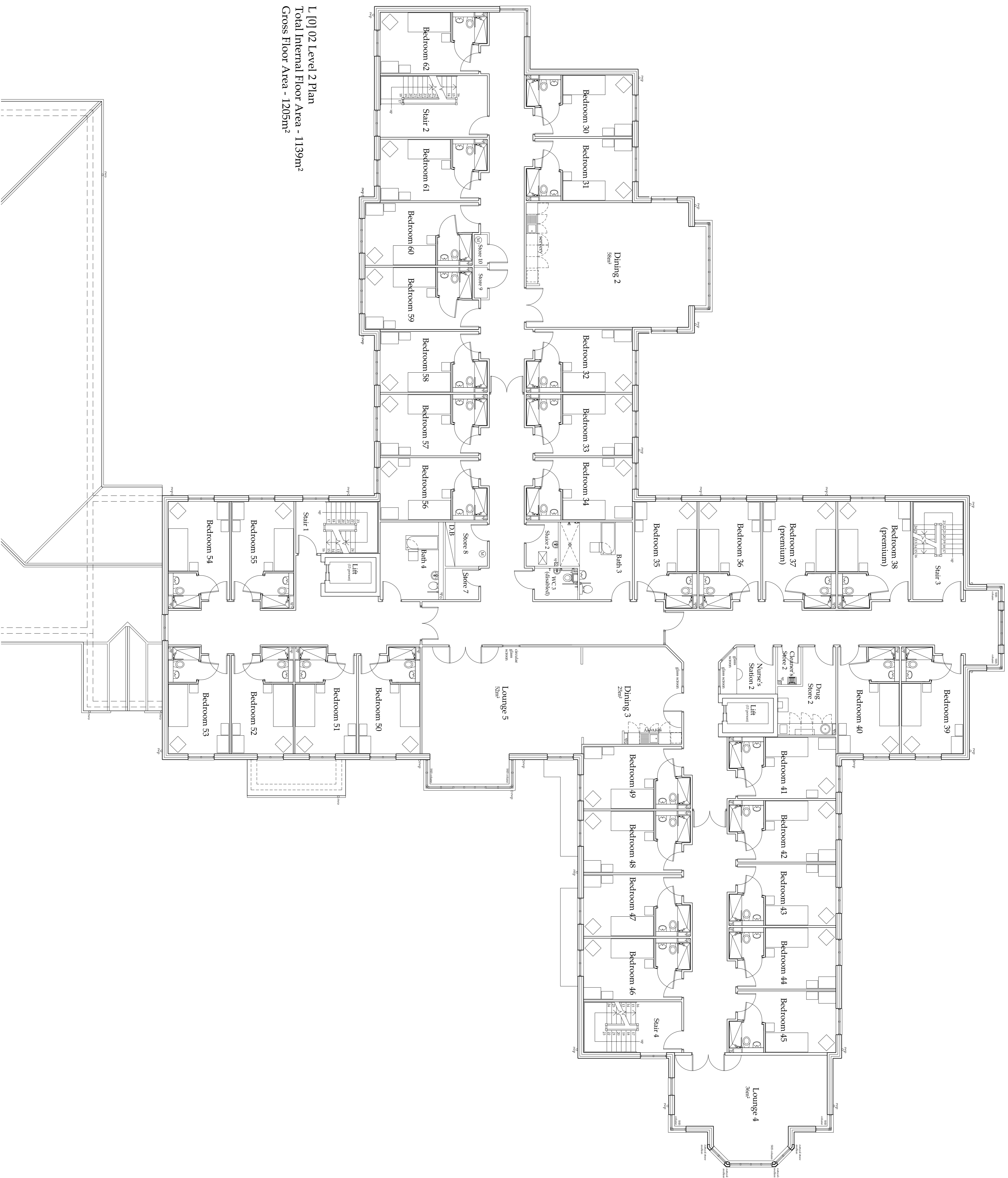
Accommodation Schedule

Lounge/ Dining - 77m²
 Lounge 4 - 36m²
 Dining 2 - 58m²
 Total Lounge / Dining area - 171m²

33 Single Bedrooms with Ensuites

2 Lifts (2 x 13 person)
 2 Bathroom
 1 Disabled WC
 1 Drug Store
 1 Sluite
 Nurse's Station
 Cleaner's Store
 Stores

- Key**
- rwp Rain water pipe
 - rwo Rain water outlet
 - M Manifold positions
 - D.B Distribution board
 - F.P Fire place



L [0] 02 Level 2 Plan
 Total Internal Floor Area - 1139m²
 Gross Floor Area - 1205m²

Revision	Description	Date
A	Internal layout changes	10/08/11
B	Internal layout changes following reorganisation of bedroom layout and adjustment of openings to suit.	24/08/11
C	Arrangements to window positions and Lintel of canopy shown. Other minor amendments.	06/10/11
D	Bedroom numbers amended to suit additional Bedroom on level 1. Other minor amendments.	22/03/12

Do not scale from this drawing.
 Any errors, omissions and discrepancies to be reported to the Architects as soon as they are discovered and instruction sought before proceeding.

Drawing Status: Planning

Proposed Care Home,
 Mapplewell, Barnsley

ALISTON MURPHY ASSOCIATES
 ARCHITECTS

Scale: 1:100 @ A1 Date: July '11
 Drawn: KP/SJ Auth: D
 15/01/2011
 1535 L [0] 02