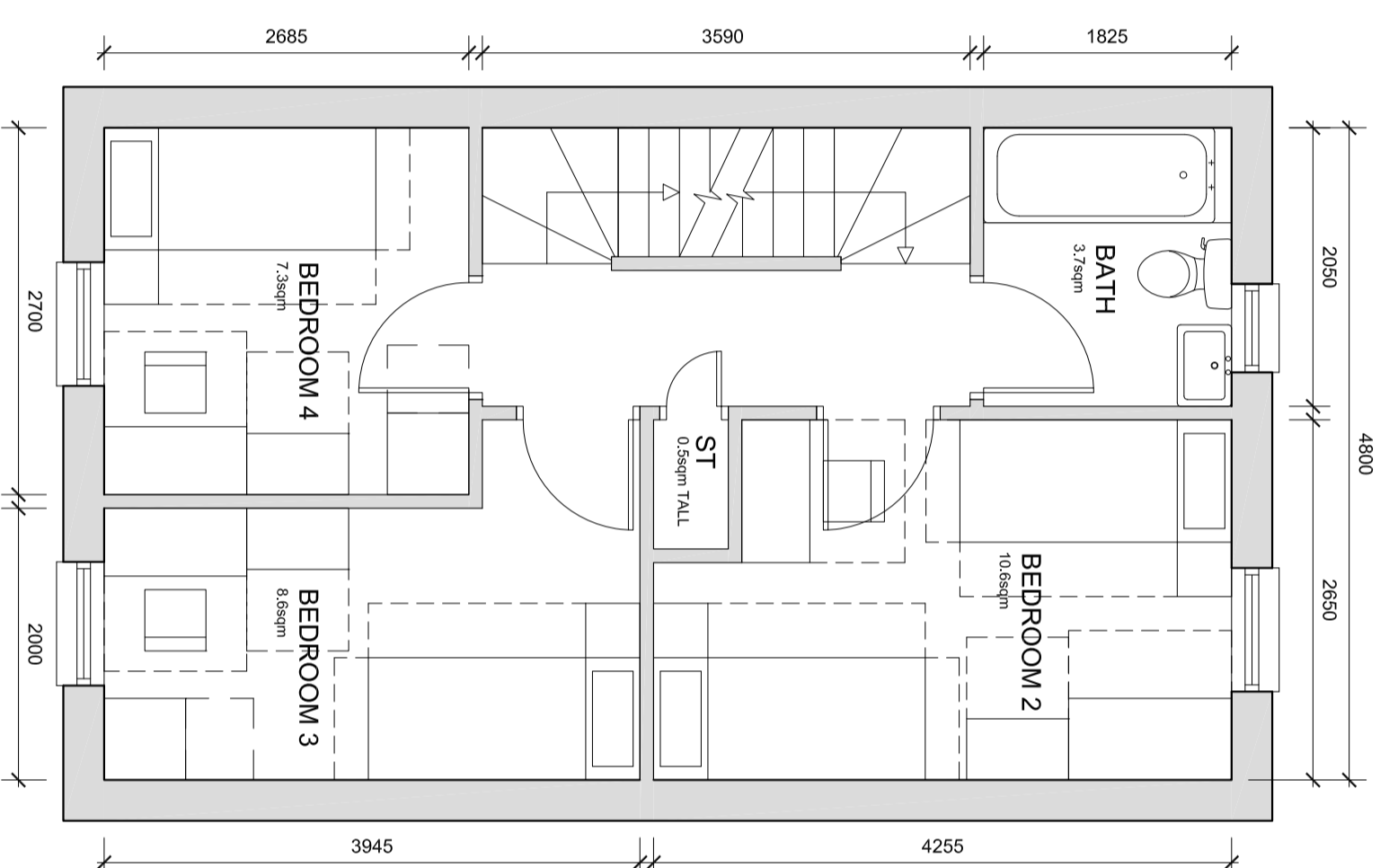
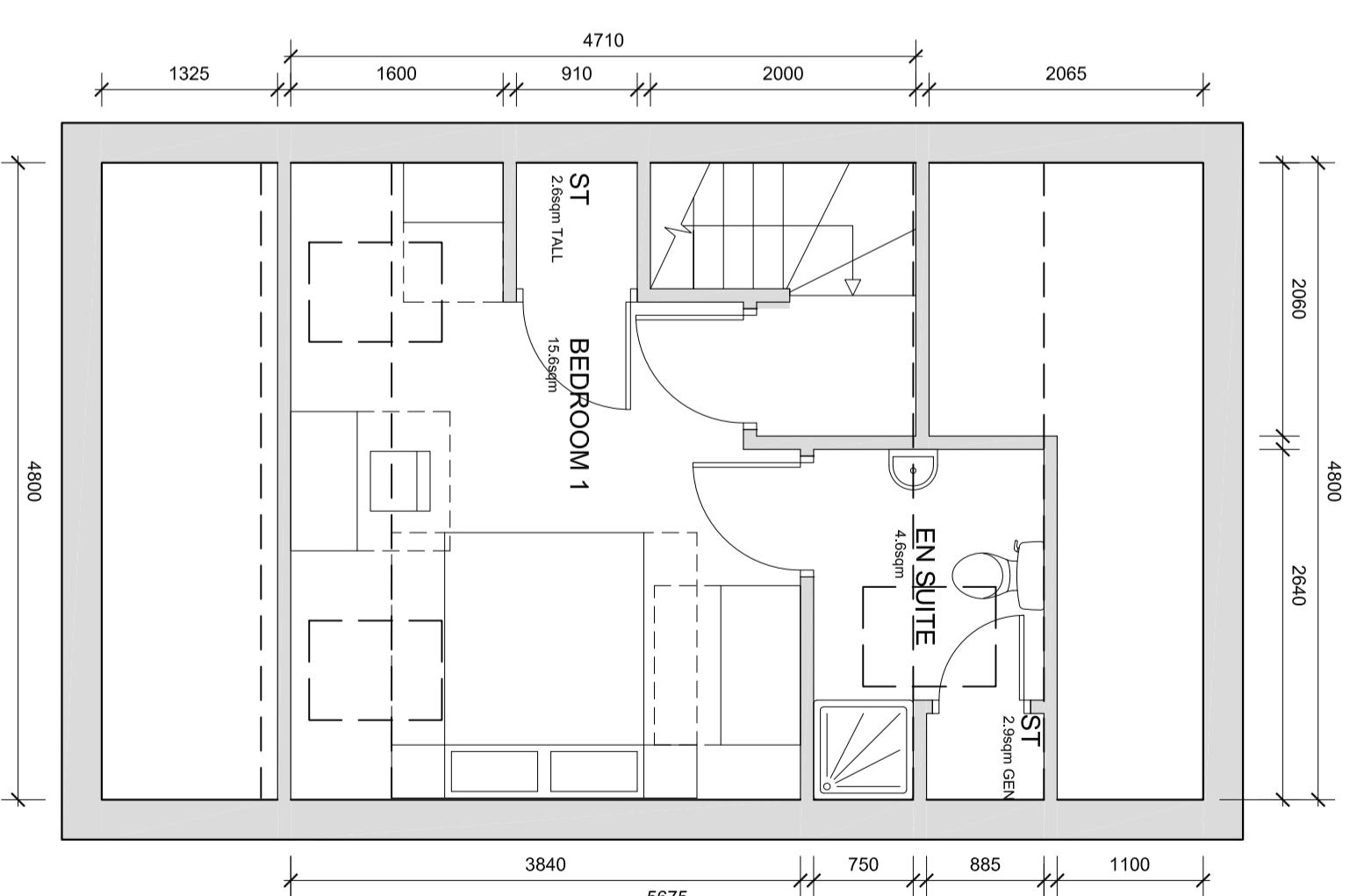


GROUND FLOOR
Plot size - 107.7 sqm

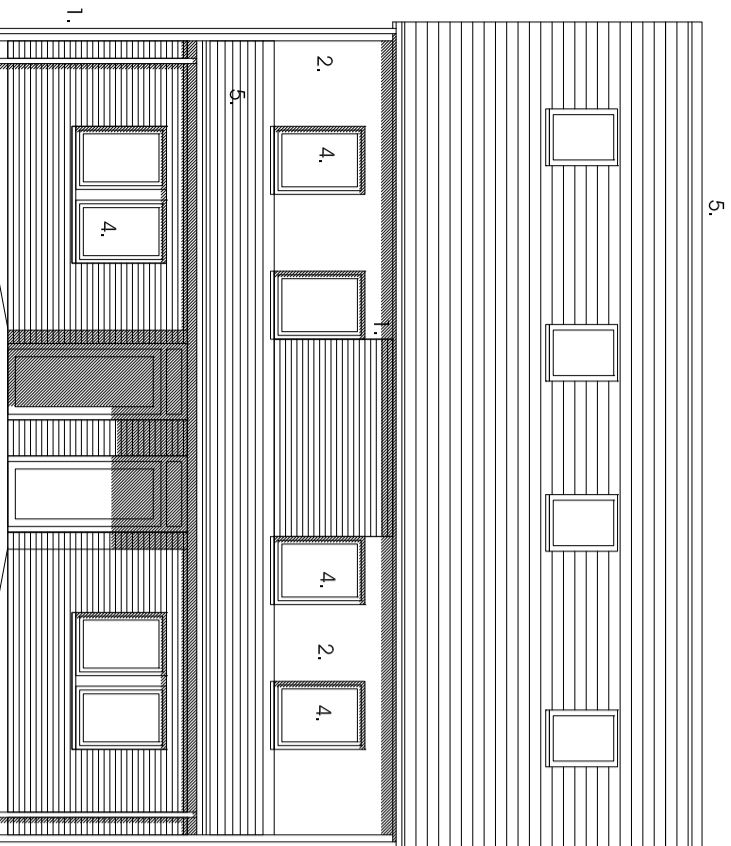


FIRST FLOOR

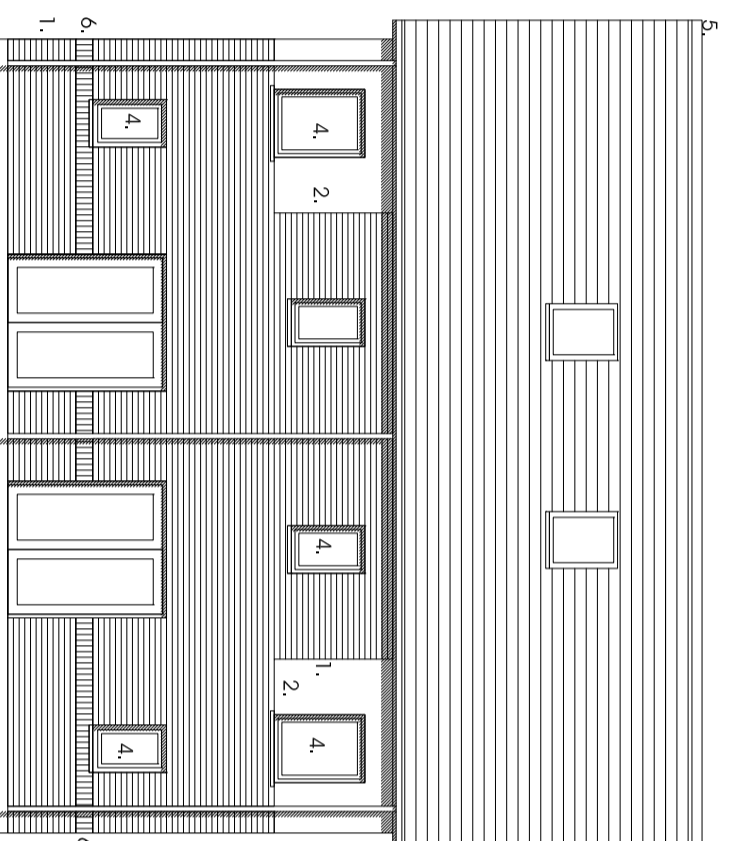


SECOND FLOOR (simple pitched arrangement)

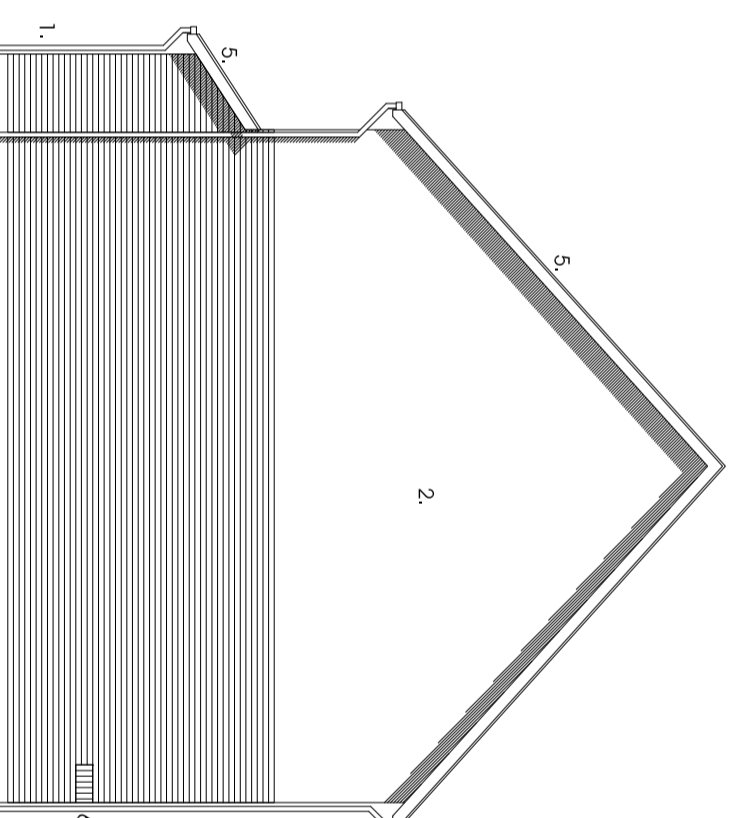
1. Fl. Quality facing brickwork
2. Thorough coloured render system (ie. Sto / Weber or similar approved)
3. 25mm x 125mm horizontal timber F.V. boarding on vertical tongued softwood battens. Timber to be heat treated European Redwood, from certified managed sustainable forests (ie. Finforest Thermowood or similar approved)
4. Stained timber framed double glazed windows
5. Interlocking concrete tiled roof
6. Solidier course detail
7. Projecting entrance canopy with pressed metal colourcoated edge detail
8. Rampet wall with pressed metal coping finished over iron roof
9. galvanised steel bodyside
10. colourcoated pressed metal panel



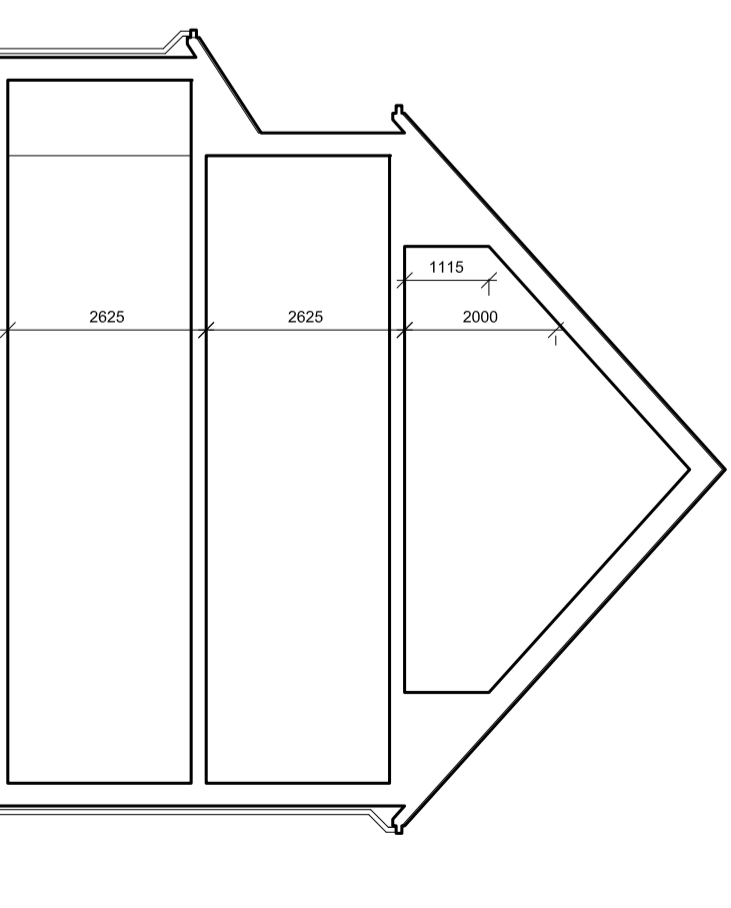
Entrance Elevation
Simple Pitched Roof Option



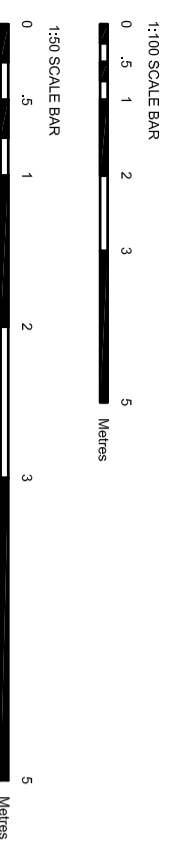
Rear Elevation



Side Elevation



Section



© Acornius NSM Architects
The general contractor is responsible for the verification of dimensions on site and the detailed B10 to be formed of any discrepancy.
The status of information contained in a computer generated drawing shall be verified to that conveyed by the paper copy.
References:
A 28.07.08 B11
Structural and masonry code
B 29.07.08 B1
Window sizes on plan indicated to correspond with elevational
C 01.08.08 C CDDV
Get plan oriented and furniture placed to suit.



Scale: 1:100/1:50 @ A2
Date: JULY 2008
Drawn: RJJ/CO
Dwg No: 2121-01-S-125-C

4b6p
New Lodge Crescent, Barnsley
Yorkshire Housing

