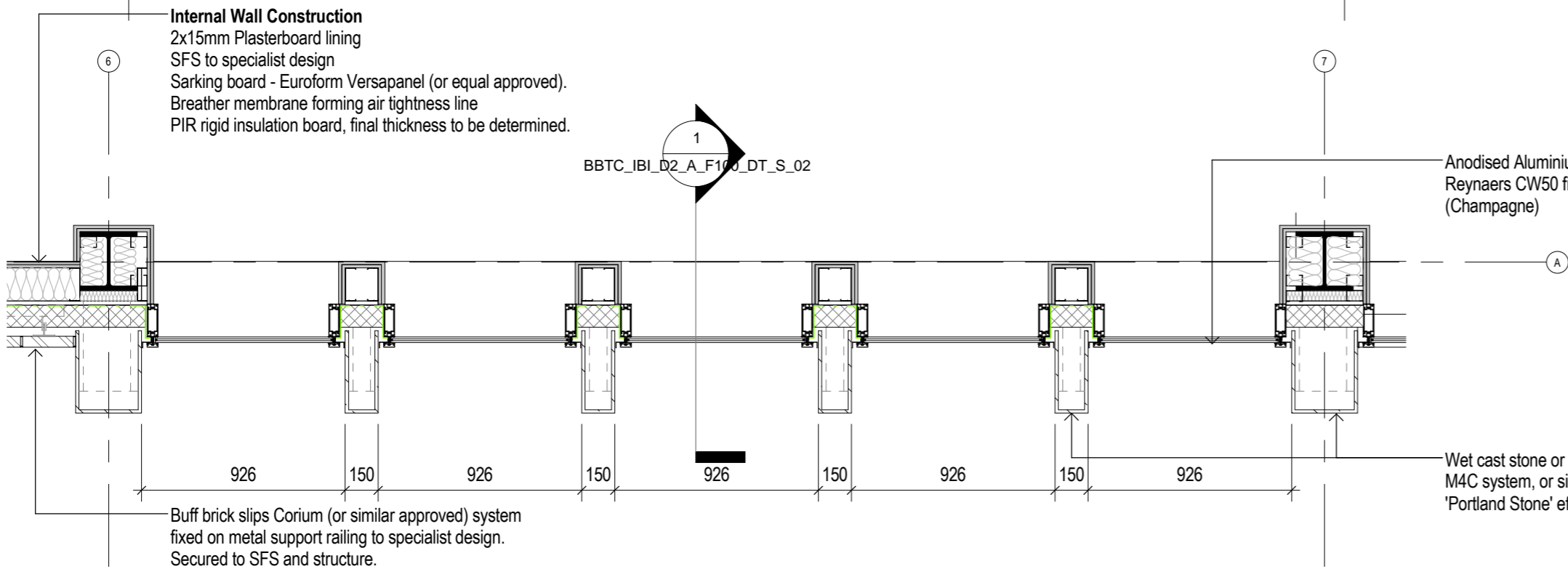
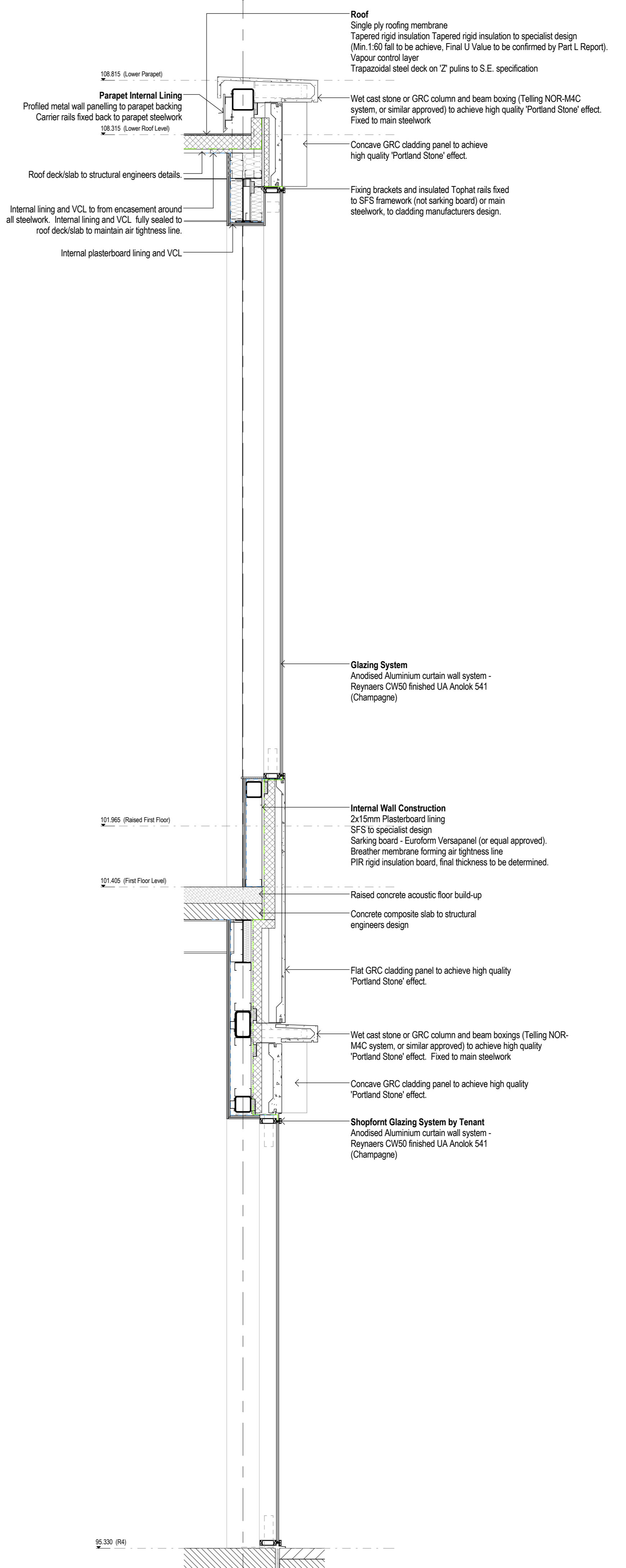


3 South Elevation - S-02

1:25

1 Wall Section S-02

1:25



2 Plan Detail - First Floor - Grid 6/A - S-02

1:25

Ref	Description	Outline	Spec Ref
01	Buff brick slips on metal carrier system. Secured to SFS and structure. Fixed to main steelwork. Telling NOR-M4C system, or similar approved, to achieve high quality 'Portland Stone' effect. Fixed to main steelwork.	EN12	EN12
02	GRC column and beam boxings to achieve high quality 'Portland Stone' effect.	EN13	EN13
03	GRC column base details to achieve high quality 'Portland Stone' effect.	EN14	EN14
04	Profiled metal wall paneling to parapet backing. Carrier rails fixed back to parapet steelwork.	EN15	EN15
05	Internal lining and VCL to from encasement around all steelwork. Internal lining and VCL fully sealed to roof deck/slab to maintain air tightness line.	EN16	EN16
10	Powder coated aluminium external floor and roller shutters.	EN17	EN17
11	Powder coated aluminium bound screen to roof plant.	EN18	EN18
17	Suspended internal signage.	EN19	EN19

Rev	Date	Reason	By	App
1	12/04/17	Planning Issue	PAI	EA
2	03/02/17	Stage 3 Planning Issue	PAI	EA
3	23/12/16	Initial Stage 3 Issue	SCB	AG

Drawn: T.H.  
 Wall Section S-02 South Facade - Grid 6/A  
 Project: Intelligence Buildings Infrastructure  
 Client: Peter Barmsley Town Centre Phase 2  
 Scale: 1:25  
 Date: Dec 2016  
 Purpose: Planning  
 Drawing Number: BBTC\_IBI\_D2\_A\_F100\_DT\_S\_02  
 Revision: 3