

# **Goldthorpe A635 Roundabout Art and Landscaping Project**

## **Design and Access Statement**

### **Contents**

<b>Design and Access Statement</b>	<b>1</b>
<b>1. Overview</b>	<b>2</b>
<b>2. Inspiration for the Design</b>	<b>4</b>
<b>3. Description of the Design</b>	<b>5-6</b>
<b>4. Appearance / Materials</b>	<b>7</b>
<b>5. Colour choices</b>	<b>8</b>
<b>6. Orientation</b>	<b>8</b>
<b>7. Scale</b>	<b>8</b>
<b>8. Construction of Foundation Pads</b>	<b>9</b>
<b>9. Installation method Summary</b>	<b>9</b>
<b>10. Geographic Location and Site Location Plan</b>	<b>10-11</b>
<b>11 Flood Assessment</b>	<b>12</b>
<b>12. Landscaping</b>	<b>12-13</b>
<b>13. Access</b>	<b>13</b>
<b>14. Risk Mitigation</b>	<b>13</b>
<b>15. Maintenance</b>	<b>14</b>
<b>Documents attached</b>	<b>14-15</b>

## 1. Overview

**Name of Artwork: due process is being followed, official consultation with members has started.**

Artist, Dan Jones has been commissioned to create a permanent sculpture to be sited on the recently completed ES10 A635 roundabout (funded by the Goldthorpe Towns Fund Programme as part of UK government) which will provide the major access into the ES10 Employment Site and will create a substantial number of new and additional job opportunities for the local area.

The artist has undertaken extensive engagement with the local community and key stakeholders to develop the design for the artwork and a name for the roundabout.

This place-specific sculpture will also act as a key landmark gateway which will welcome residents and visitors to the area. The project is funded by the Goldthorpe Towns Fund Programme as part of UK government).



*Image: Maquette artwork by Dan Jones*

### **Landscaping Context:-**

The original landscaping plan required as part of the roundabouts original planning application was previously approved and a further amendment was approved 10 January 2025, which was for the discharge of condition 13 (revised landscaping scheme) in relation to planning application 2021/1511. This new application also contains a revised landscaping plan which has been developed in conjunction with the artwork designs being outlined in this statement

## 2. Inspiration for the Design

The artist undertook a period of research into the heritage of the area as well as a series of site visits to the Dearne Villages (Thurnscoe, Bolton Upon Dearne and Goldthorpe) and conversations with representatives from the Dearne Valley Old Moor Nature Reserve.

The artist conducted 15 creative workshops, engaging 240 people in the project. Groups were selected to represent a mix of age ranges from Goldthorpe, Thurnscoe and Bolton upon Dearne including: IKIC (I Know I Can) Juniors, IKIC Pandas, IKIC Seniors (Bolton Upon Dearne), Let's b friend group Thurnscoe and Let's b friends group Bolton Upon Dearne; Dearne Astrea Academy (Goldthorpe) and the Goldthorpe Development group (Goldthorpe) as well as an open drop in event held in Goldthorpe.



These workshops were structured to enable participants to share what is important to them about the area, thinking about the past, present and future, expressing their thoughts through collage and making activities as well as suggesting a new name for the roundabout.

In addition, an online survey was available for contributions from those who were unable to participate in the formal workshops.

Dan also engaged with a Project Steering Group including representatives from: BMBC (Senior Engineers, Structures, Project Manager (Economic Development Barnsley Council), Dearne Area Council Manager, Dearne Community Development Officer, Senior Urban Design Officer), Ward Councillors for Dearne North, PWP landscape design and the developer. Wider key stakeholders have been kept informed about the project including Ward Councillors for Dearne South and Darfield and Goldthorpe Towns Fund Board.

Analysis of the outcomes of community and stakeholder input demonstrated a number of recurring themes around - pride in the areas agricultural and industrial heritage, a desire to celebrate and conserve the areas natural environment and wildlife, a need to represent the coming together of the local communities, looking to the future from all age ranges and wanting to demonstrate unity and equal opportunities.

These themes inspired the final design as described below.



*Image: Drawings of each panel.*

### 3. Description of the Design

The concept for Dan's design represents the three communities coming together illustrated by 3 vertical panels layered with design features to include:

- At the base of each panel are design features to represent the agricultural heritage of Highgate, Goldthorpe, Bolton Upon Dearne, Thurnscoe and Billingley.
- Representation of industrial heritage
- A section designed to be used as a habitat stack for bugs and insects
- A figure to represent the community
- A functional birdhouse
- Imagery to represent flora / fauna and local bird species as advised by Old Moor Wetland Centre

These panels are symbolic of the growth of the area and how the area's future is built on the foundations of its heritage. The ring in the centre provides structural stability but also represents the communities coming together.

Each panel also includes detailed content/imagery that is specific to each area that Dan has collated from community input:

**Highgate and Goldthorpe:**

- Representation of women's contributions through inclusion of sewing reference
- Figures represent the older generation lifting up the next generation
- Environmental elements include representation of training, education and new technology

**Bolton Upon Dearne:**

- Representation of The Brickworks ex industry
- Representation of fishing at Brick ponds
- Representation of reclaimed spoil heap and increase in pollinators
- Bird box - woven structure taken from community drawings

**Thurnscoe:**

- Representation of ex industrial area / coal mining through the pit head
- Representation of singing / performance - specific musical notes as advised by Thurnscoe Harmonic Male Voice Choir from the song TAKE ME HOME by Edwards and Hand
- Bird box - pineapple designed by young people as a symbol of wealth and prosperity (*In the 17th and 18th centuries, the pineapple became a symbol of wealth and luxury in Europe due to its exotic nature and rarity.*)

The local bird species featured will include:

- Marsh Harrier, Pigeon, Barn Owl, Bearded Tit, Bittern, Duck, Falcon, Godwold, Kingfisher, Buzzard, Lapwing, Spoonbill, Starling, Mallard.



## 4. Appearance / Materials

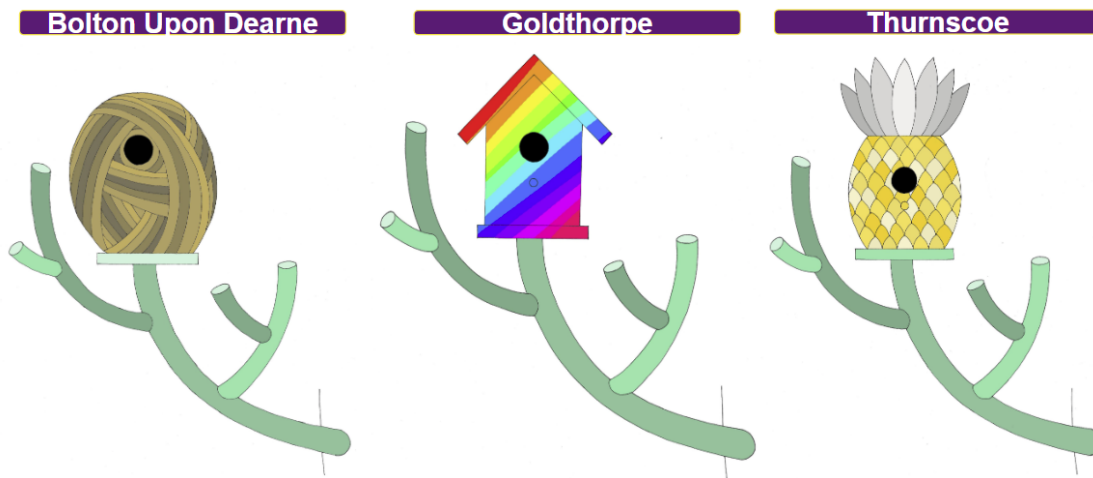


Image: Maquette artwork by Dan Jones

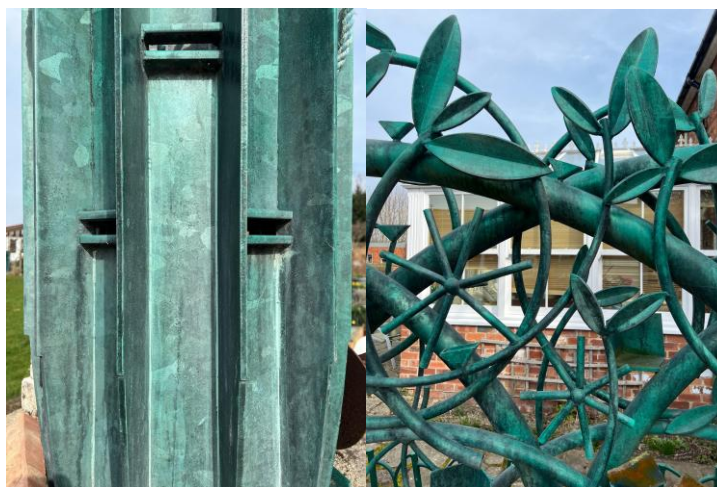
Each panel will be made up of 2 layers of mild steel separated with a 8mm mild steel washer with tinted resin coating to provide texture and colour. This finish also has anti graffiti properties.

The designs in each panel will be laser cut.

Each section incorporates a three dimensional, functional birdhouse that will be insulated and then painted. The designs of the bird houses were directly influenced by young people's designs through the workshops as described in Section 3.



## 5. Colour choices



The mild steel with tinted resin coating results in a green coloured hue. It will be applied at different intensities to create textures as shown in the examples above.

## 6. Orientation

The Goldthorpe panel will be located face-on to oncoming traffic from the Darfield direction, followed clockwise by Thurnscoe and then Bolton Upon Dearne.

## 7. Scale

The artwork will be 5m in height onto a precast concrete foundation. The sculpture is fabricated in 3 parts. The diameter of the sculpture is 3000 mm. The total estimated weight of the sculpture is 1875 kgs.



## 8. Construction of foundation pads

The sculpture foundation pad will be constructed by CDE Ltd.

All specifications are outlined in the Structural Engineers design plan

The operation will take 2 days to complete .

**Day 1** - A hole to the depth required will be dug and shuttering constructed in situ for the casting of the concrete.

**Day 2** - Delivery of the concrete to site. The lorry will park as close to the foundation shuttering as possible on the roundabout maintenance bay. The concrete will be pumped into the shuttering using a concrete pump and left to set.

After a week, the shuttering will be removed and taken off site.

The foundations are to be cast and let set for a minimum of 28 days prior to the installation of the sculptures.

## 9. Installation method Summary

The site installation will be managed by Alex Boddy of CDE Ltd, who will act as the Principal Contractor and Site Supervisor to manage the operations on site.

All safe working procedures for all sub-contractors will be set out at the site induction by the site manager, prior to commencement of work on site. All sub-contractors' work will be carried out strictly in line with the Principal Contractor's instructions and sub-contractors risk assessments, method statements and lift plans. Any variations on site will be agreed with the site manager and documented.

All CDE Ltd work will be managed by Alex Boddy, who will be the CDE Ltd supervisor on site. The three parts of the sculpture will be delivered to the site by the haulage contractor Wood Lifting and Logistics Ltd and will park in a location as directed by Alex Boddy within the bounds of the traffic management system in place.

The sculptures will be delivered on the flat back of a HIAB mounted lorry from Wood Lifting and Logistics Ltd. The delivery lorry will park as near as is feasible from the foundation pad on the maintenance bay of the roundabout.

A small scaffold tower will be erected in place to bolt the three parts of the sculpture together through welded flanges on the sculpture.

The lifting operation will be undertaken using textile slings and the Hiab crane. The operative will be a trained slinger and a bankman will be deployed throughout the operation.

Each sculpture in turn will be lifted onto the foundation block. The sculpture will be positioned and leveled into position resting on 25 mm packers to raise the base plate 25 mm above the foundation block. Once the final resting location has been agreed, the 6 No. fixing points on each base plate will be secured as specified in the structural engineer's report. The top flange connecting all 3 parts together will be bolted and secured.

Self-leveling grout will be poured through the holes in the base plate to fill the void between the block and the bottom of the base plate. When the grout is set, it will be trimmed to the edges of the plate.

Re-touching of all surface finishing will be undertaken if required. All equipment and waste arising will be cleared from the site and left in a tidy state for future earthworks and planting

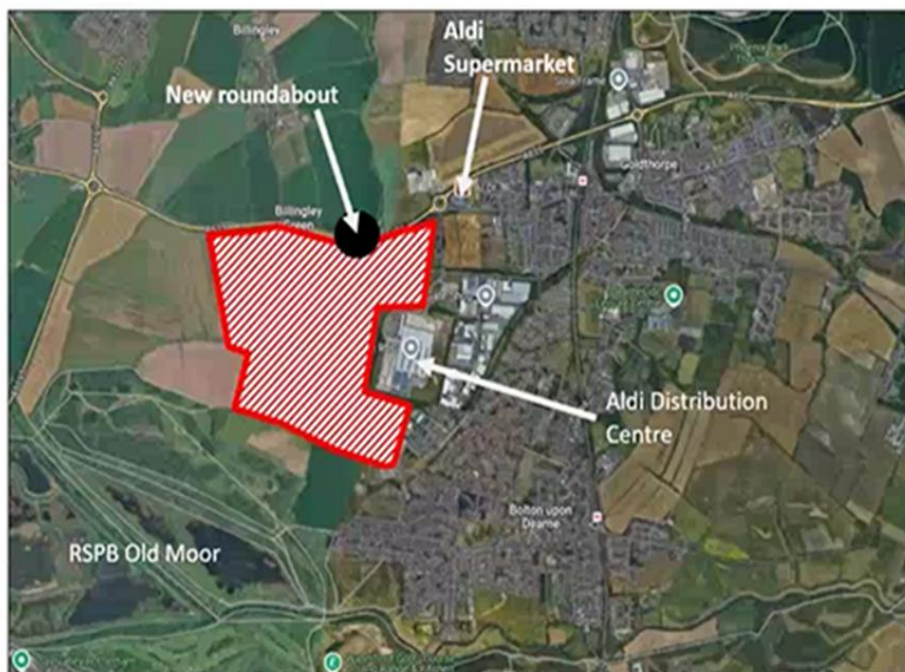
### **Traffic Management.**

Discussions are ongoing with David Sharp (Senior Network Coordinator Officer) with regard to agreeing the most suitable strategy for safe working and controlling traffic whilst the works are being delivered on site. A site visit is planned to finalise the best option and a license process will be developed/agreed for the numbers of days road space is required for the foundations, installation of sculpture and landscaping.

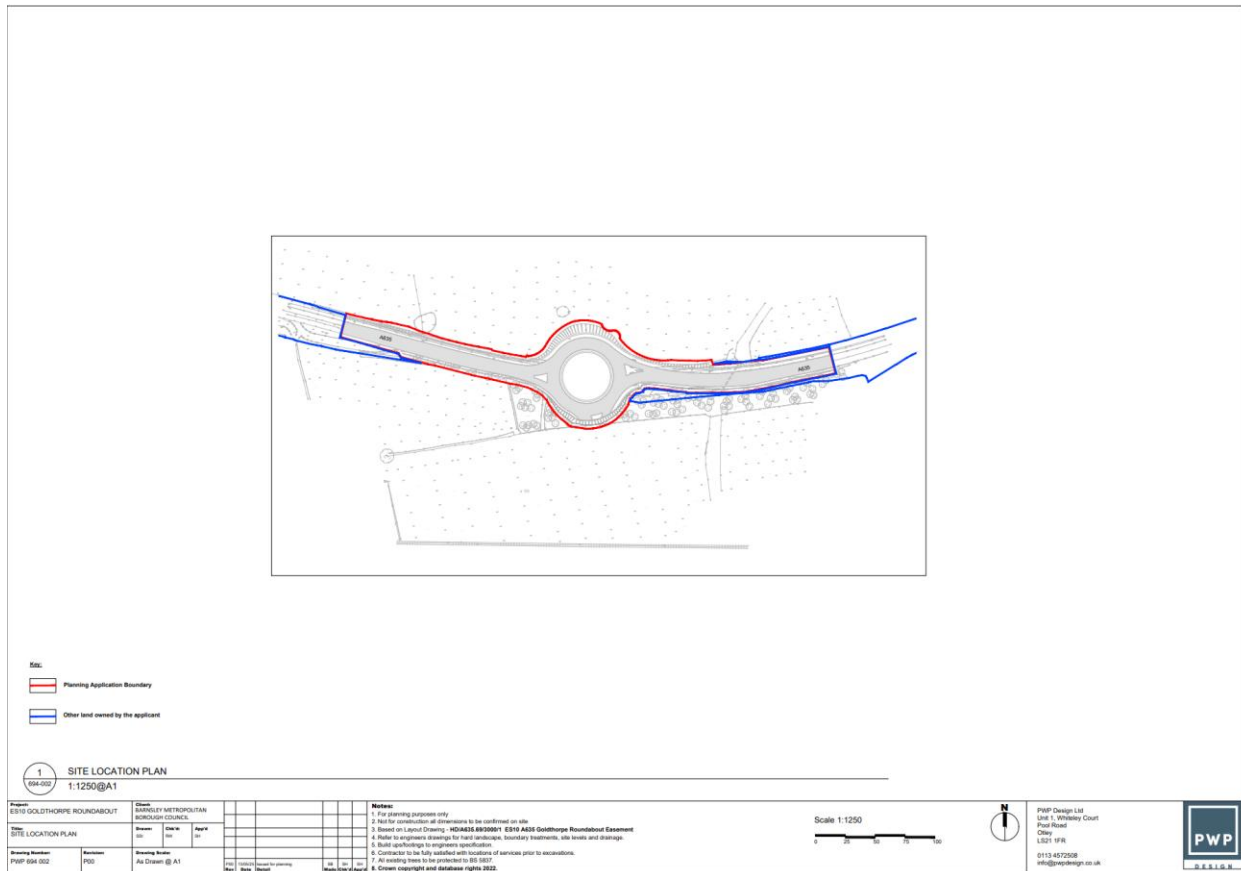
## **10. Geographic Location and Site Location Plan**

The artwork and landscaping will be sited on the ES10 A635 roundabout that will provide the major access into the ES10 Employment Site.

### **Where is the site?**



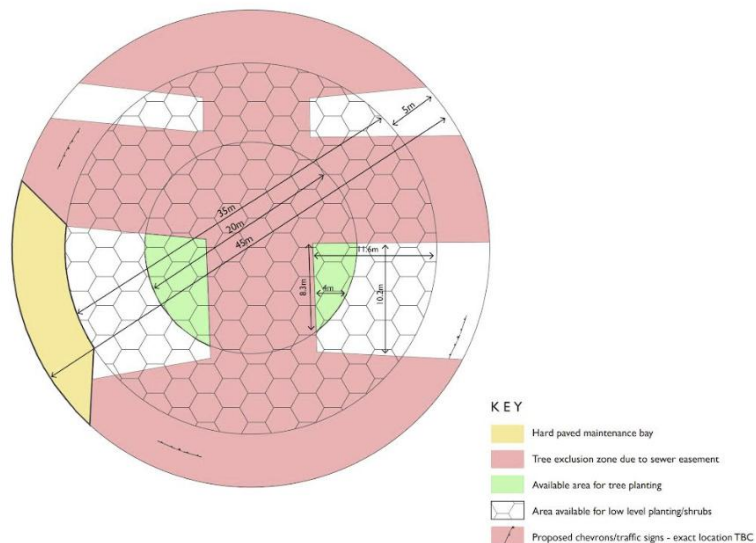
## Site Location Plan



The artwork will be located on the roundabout to specifically avoid existing underground drainage and to enable sightlines for vehicles driving around the roundabout as per the constraints drawing below.

### PWP 694 ES10 GOLDTHORPE ROUNDABOUT LANDSCAPE SKETCH DESIGN - CONSTRAINTS

#### CONSTRAINTS GRAPHIC



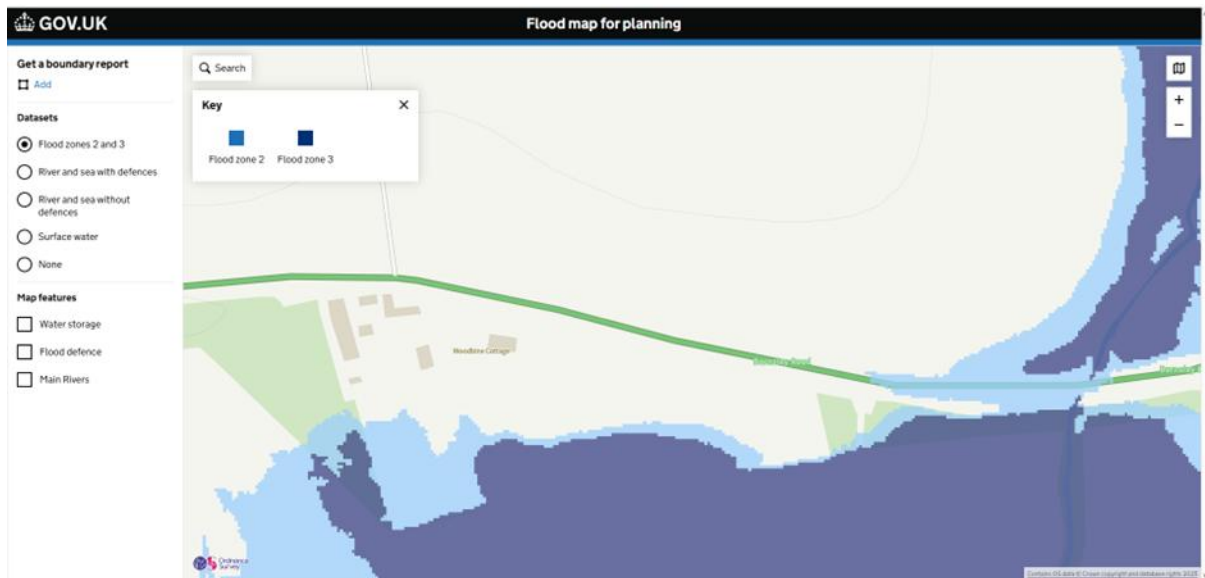
## 11. Flood Risk

Due to nature of the works, that are being a proposed sculpture and landscaping works, it is considered that the proposals will have no negative impact on flooding in the area.

The nearest residential property lies approximately 250m from the proposed site and is currently outside any flood zones 2 or 3

A separate summary has been provided for the environment agency to be consulted on.

Extract provided below from government web site for flood risk maps for the location S63 9FA.



## 12. Landscaping

PWP Design have collaborated with the artist to develop a landscape design that will complement the artwork, introduce biodiversity and minimise maintenance requirements. The image below is also an attachment to this statement and is listed within the document attachment section (page 12 and listed as 2).





The citing of the artwork is positioned away from the road following guidance that the artwork would need to be set back by a minimum of 1.5 times the height of the sculpture - minimum 7.5m away from the edge of the carriageway. The centre of the foundation pad (3000 x 3000 x 600mm) is 11.5 meters from the inner edge of the maintenance bay (the maintenance bay is 5m wide).

A Stage 1 and 2 Road Safety Audit is also being commissioned.

The structural calculations and specifications for the foundations have been designed to CDM Regulations 2015.

Insurance and responsibilities at various stages:

- Artist - Daniel Jones - Community and stakeholder engagement, design development and overall creative vision
- Structural Design specifications - J Roberts Design Ltd
- CDM Principal Designer for sculpture foundations: - AM Safety Services Ltd Alison Mair
- To Fabrication Stage/Project Management - Chris Campbell Sculpture
- Fabrication and installation – Campbell Design and Engineering Ltd (CDE Ltd)
- Once installed, Barnsley Council will accept the work and ownership, and responsibility will pass to Barnsley Council Highway Authority.
- Installation of Landscaping. Contractor Not yet appointed.
- CDM Principal Designer Highways Business Unit 4 for landscaping

## **15. Maintenance**

The artwork has been designed, with a depth of 1000 mm with minimal maintenance in mind. The longevity of galvanised steel in typical conditions is estimated at 75 years.

The mild steel has anti-graffiti properties.

Upon completion Daniel Jones will provide a maintenance plan which will recommend the frequency of the visual inspections.

## **Documents attached**

1. PWP694 002 Rev P00 Goldthorpe Roundabout Site Location Plan
2. PWP694 001 Rev P05 Goldthorpe Roundabout Site Layout Plan & Landscape Proposals
3. PWP694 Goldthorpe Roundabout 3d Visuals
4. PWP694 Goldthorpe Roundabout Landscape Sketchbook Rev01 April 2025
5. PWP694 Goldthorpe Roundabout Constraints Plan2
6. BMBC Visibility and Constraints Plan1
7. Chris Campbell Indicative Elevation sketch with dimensions - for each panel and assembled structure
8. Chris Campbell Method Statement

9. Chris Campbell Inspection and Maintenance
10. James Roberts Design Ltd Indicative Foundation Design Strategy Plan
11. BMBC Flood Risk