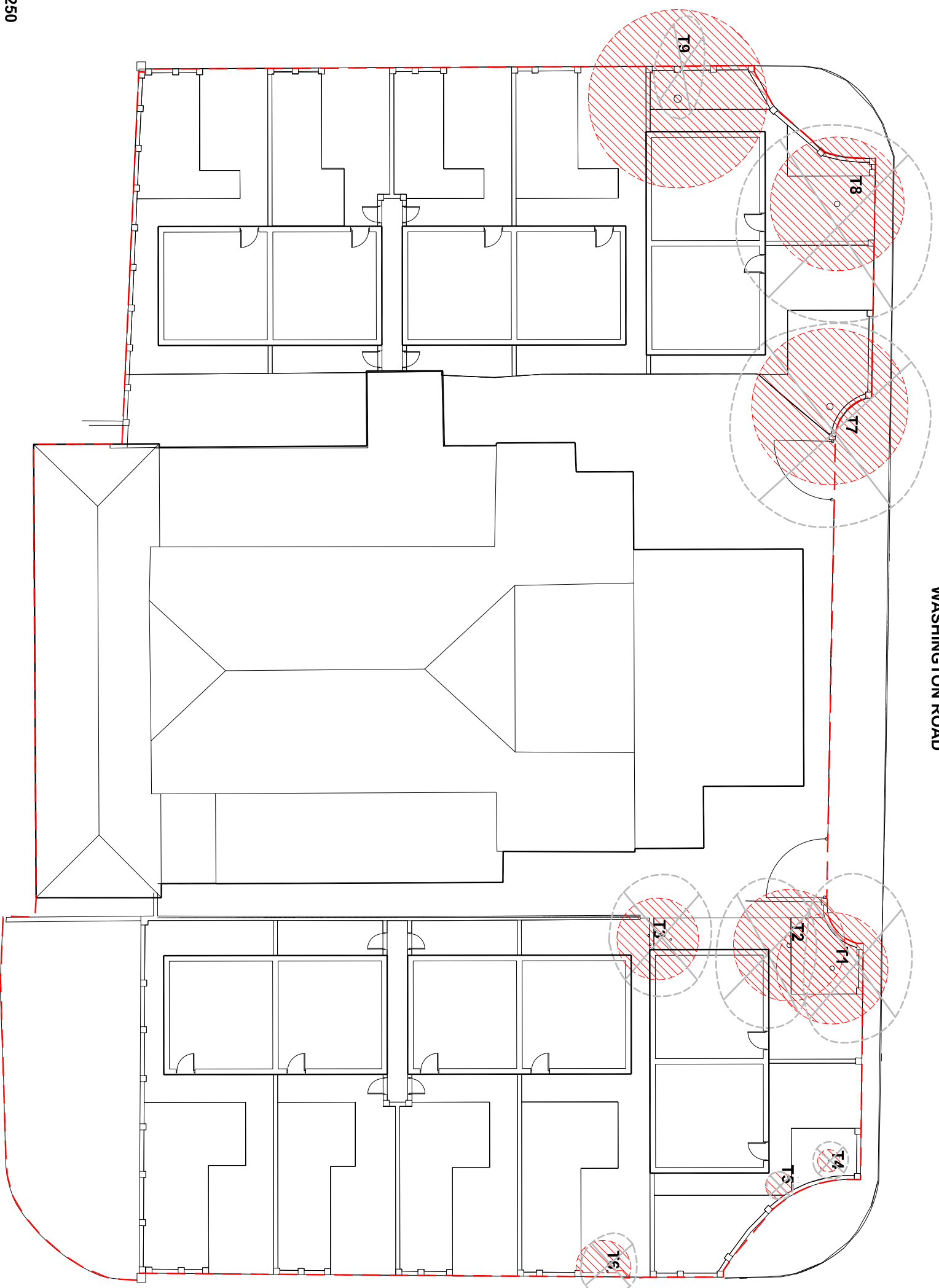


NO	TREE SPECIES Common Name	TREE SPECIES Scientific Name	HEIGHT/SPREAD m	DIA mm	CAT.	Life Stage	Life exp yrs	NOTES
T1	Silver Birch	Betula pendula	10.0	8 250	U	Mature	0	Ivy covered, deadwood.
T2	Silver Birch	Betula pendula	12.0	6 250	C2	Mature	20	Ivy covered with minor deadwood
T3	Sycamore	Acer pseudoplatanus	5.0	4 180	C2	Early-Mature	40	
T4	Ash	Fraxinus excelsior	3.5	2 50	C2	Young	40	
T5	Sycamore	Acer pseudoplatanus	3.5	1.5 60	C2	Young	40	Multi stem
T6	Sycamore	Acer pseudoplatanus	6.0	3.5 100	C2	Young	40	Cable embedded into stem at 2m above ground. Large branch removed at 1.5m above ground
T7	Sycamore	Acer pseudoplatanus	14.0	10 350	C2	Mature	20	
T8	Sycamore	Acer pseudoplatanus	12.0	9 300	C2	Mature	40	
T9	Sycamore	Acer pseudoplatanus	15.0	5 400	C2	Mature	20	Major damage and deadwood. 15% of original canopy remaining

TREE PROTECTION

TREES TO BE REMOVED (with root protection area)

WASHINGTON ROAD



TREE SURVEY TO BSS5837:2012

KEY	COLOUR	QUALITY	DESCRIPTION
GREEN	A: HIGH	Visual	Very good healthy, good form, visually important, historic or rare
GREEN	B: MODERATE	Visual	Slightly impaired condition, numerous immature, 'X' potential
BLUE	C: LOW	Visual	Adequate condition requiring minimal surgery
RED	U: FELL	Visual	Dead dying, dangerous, significant fungal disease
GREEN	SHRUBS	Visual	

SUB-CATEGORY:
1 ARBORICULTURAL
2 LANDSCAPE
3 CULTURAL/CONSERVATION

Site Boundary

In accordance with BSS5837:2012 'Trees in relation to design, demolition and construction', off-site trees within a distance equal to 12x stem diameter from boundary should be surveyed. In accordance with good working practice, all trees within 12m of the site boundary have been surveyed. The original of this drawing is produced in colour - a monochrome copy should not be relied upon.

LIMITATION OF THIS SURVEY
This survey records amenity, quality and desirability of trees retained in relation to proposed construction by visual inspection from ground level where accessible. It does not constitute a Tree Inspection or detailed report on condition.

Tree heights and spread approximate. The diameter of single stem trees is taken at 1.5m above ground level. For the diameter of multi-stemmed trees, each multistem is measured at 1.5m above ground level and calculated to give a notional diameter as if all multistems were fused into one stem.

The branch spread is an accurate representation of the crown as clause 4.4.2.5 (e)
Tree inspections should take place annually in September/October when trees are in leaf.

One tree (T7) has girdling damage by wire or rope girdling. This is noted where visible. There may be other girdling damage not visible due to density of shrubs/bushes. Detailed inspection of retained trees should be carried out at time of site clearance.

Trees with girdling wire have safe life expectancy of of not more than 20 years. A programme of planned replacement and removal is recommended.

Tree positions are based on topographic survey drawing number 4057 produced by Remap Surveys LTD dated 21.02.15

TREE CONSTRAINTS

ROOT PROTECTION AREA (RPA)
Root Protection Areas have been calculated on the following basis:

Single stems: Area equivalent to circle of radius 12 x (& Notional) stem diameter at 1.5m

Multistems: Area equivalent to circle of radius 10 x diameter at ground level.

Root Protection Areas shaped due to obstruction to root spread e.g. retaining wall, water course.

Based on site survey drawing no 4057 received via email by WM 03.11.15

Weddle Landscape Design
LANDSCAPE ARCHITECTURE
ENVIRONMENTAL PLANNING
Meow Studio, Charnwood House,
8 Kenwood Park, Sherfield S7 1SU
www.weddles.co.uk
Tel (0114) 250 1181
Fax (0114) 250 1188
mail@weddles.co.uk

Job **WASHINGTON ROAD, GOLDTHORPE**

Title	scale/dwg	drawn	date	job number	number	revision
TREE PROTECTION PLAN (TPP)	1:250	JC	NOV 15	598	WRS 03	-

