

NOTES:

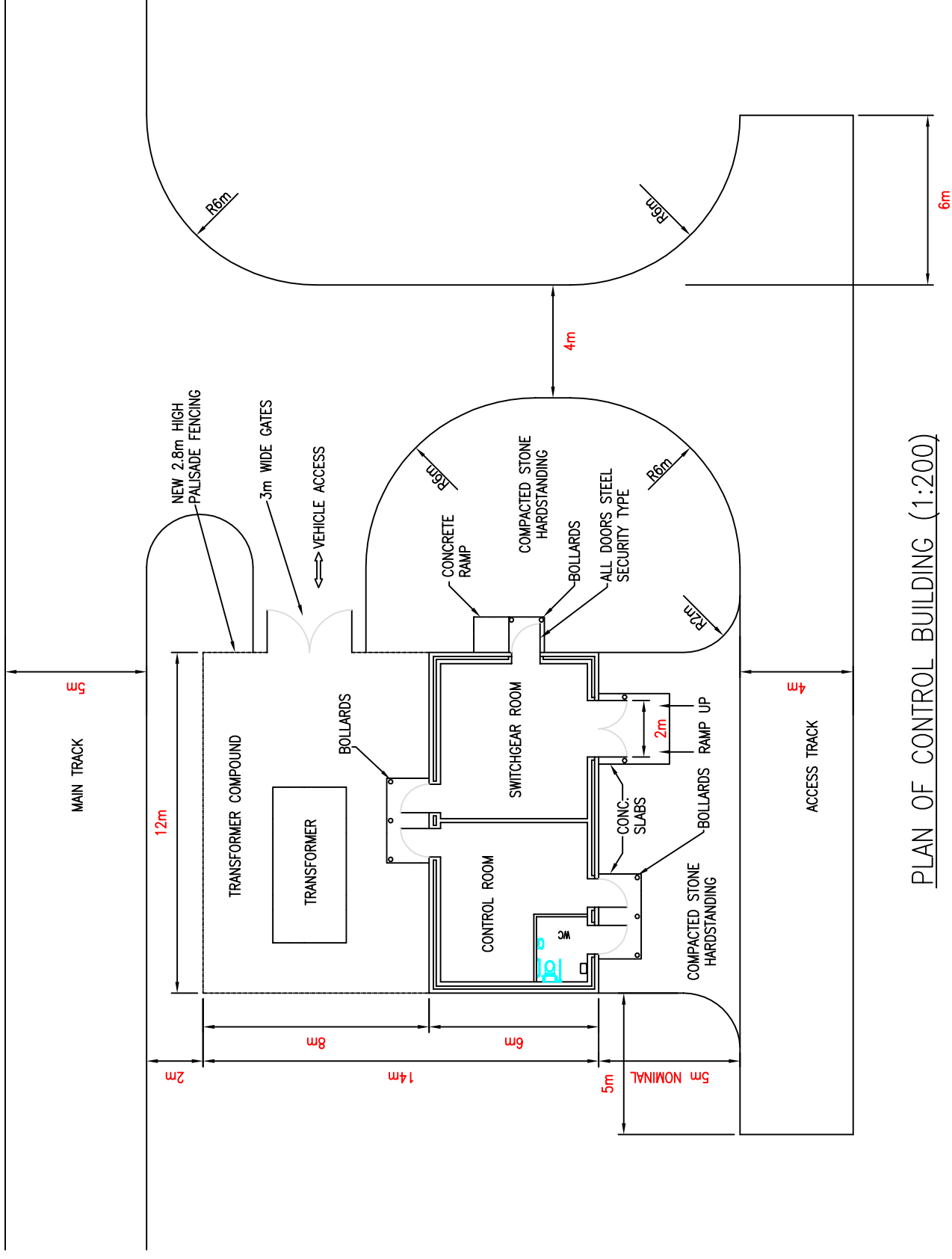
1. Work to figured dimensions only. Do not scale from this drawing.
2. All dimensions are in metres unless stated otherwise.

NOT FOR CONSTRUCTION

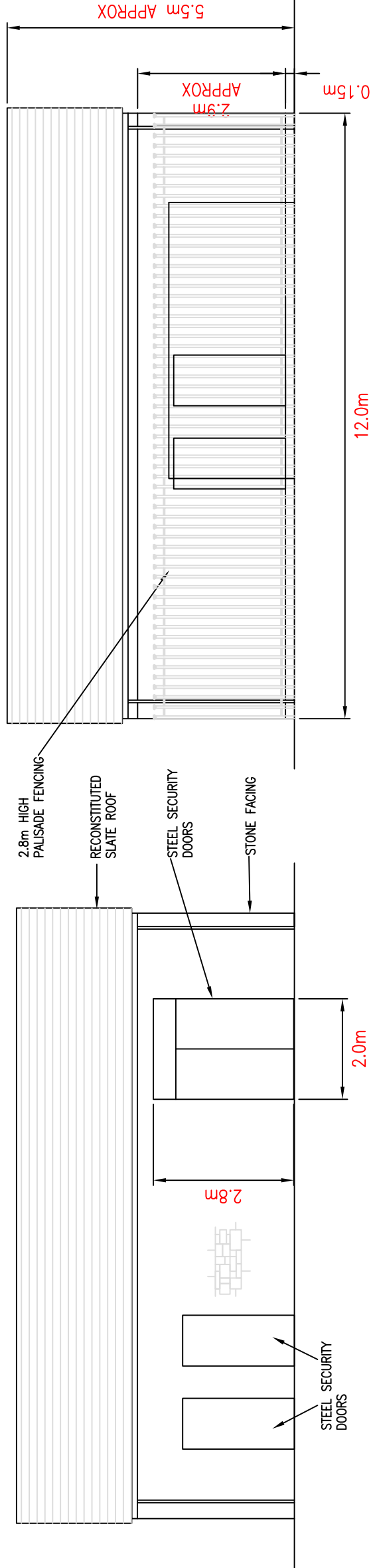
Produced By: SC
 Approved By: CS
 Ref: 190/ES/004
 Date: 16/02/2009
 Revision: A

Control Building - Plan & Elevation
 Figure 3.5

Spicer Hill Wind Farm Environmental Statement



PLAN OF CONTROL BUILDING (1:200)



FRONT ELEVATION (1:100)

REAR ELEVATION (1:100)