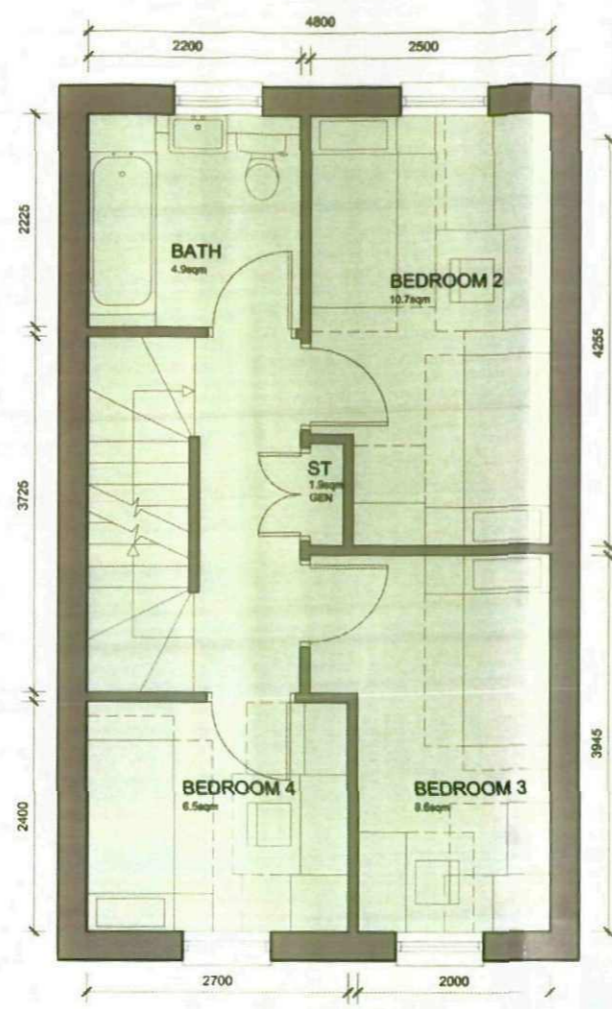
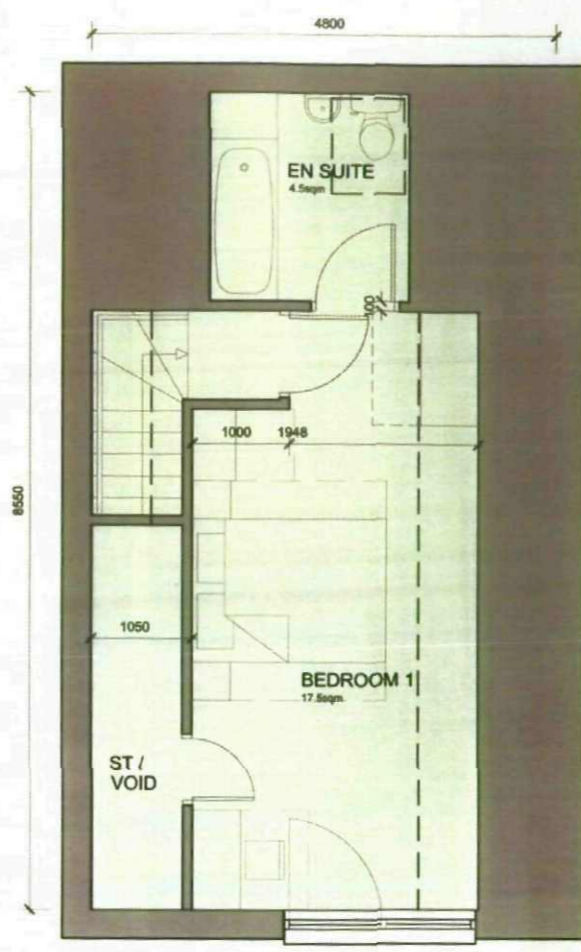


GROUND FLOOR



FIRST FLOOR



SECOND FLOOR (saw-tooth arrangement)
Plot size - 110.7 sqm

© Aconitus WSM Architects
The general contractor is responsible for the verification of dimensions on site and the architect is to be informed of any discrepancy.
The status of information contained in a computer copy of the drawing shall be limited to that covered by the paper copy.
Revisions:
A. 08.12.08 C-0007
Timber PIR boarding on elevations now shown as Accort through coloured render system.
B. 12.12.08 RJJ
Accort through coloured render system removed. Doors equalled in line with construction system. Note of back to render increased.
C. 22.12.08 RJJ
Rendered area reduced and amount of external increased.



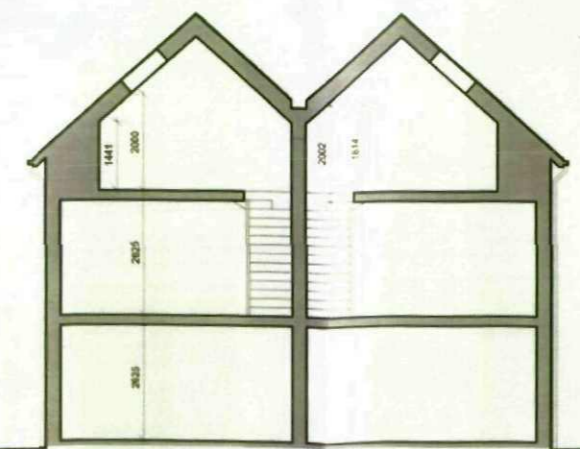
Entrance Elevation
Gable to Street Option



Rear Elevation



Side Elevation



Rear Elevation

1. 4.5m gable facing elevation
2. Through coloured render system on site, visible in white line work
3. Shaded timber framed double glazed windows
4. Shaded timber framed double glazed doors
5. Shaded timber framed double glazed doors
6. Shaded timber framed double glazed doors
7. Shaded timber framed double glazed doors
8. Shaded timber framed double glazed doors
9. Shaded timber framed double glazed doors
10. Shaded timber framed double glazed doors



Barnsley Metropolitan
Borough Council
26 JAN 2009
Corporate Mail Room

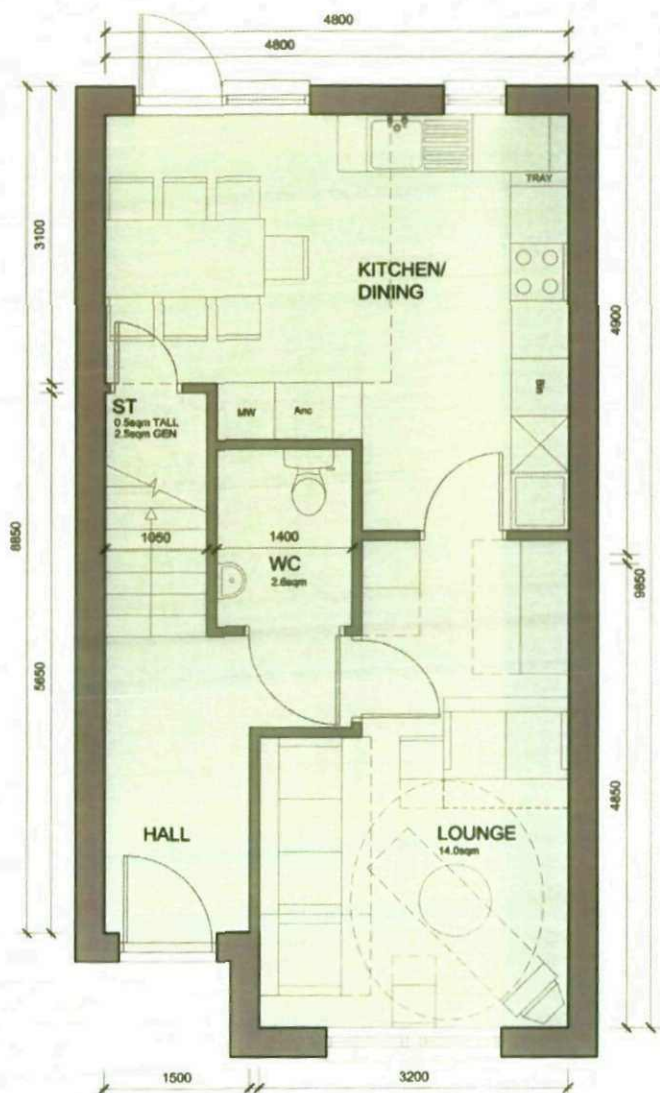


Scale 1:100/1:50 @ a2
Date oct 2008
Drawn RJJ/CO
Check No. 2121-018-126C

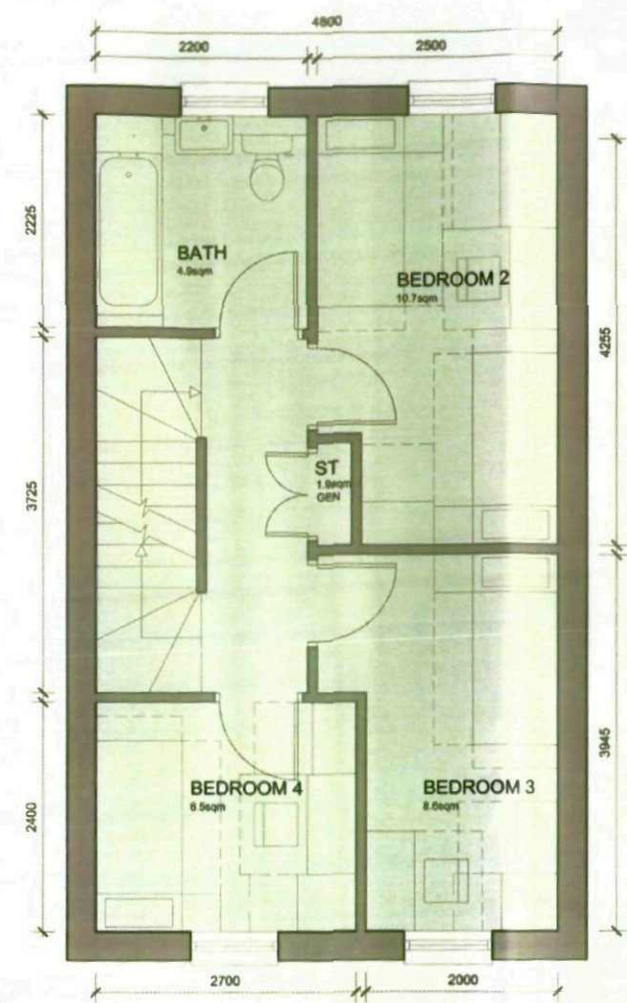
PLANNING
4b6p - saw tooth
New Lodge Crescent, Barnsley
Yorkshire Housing



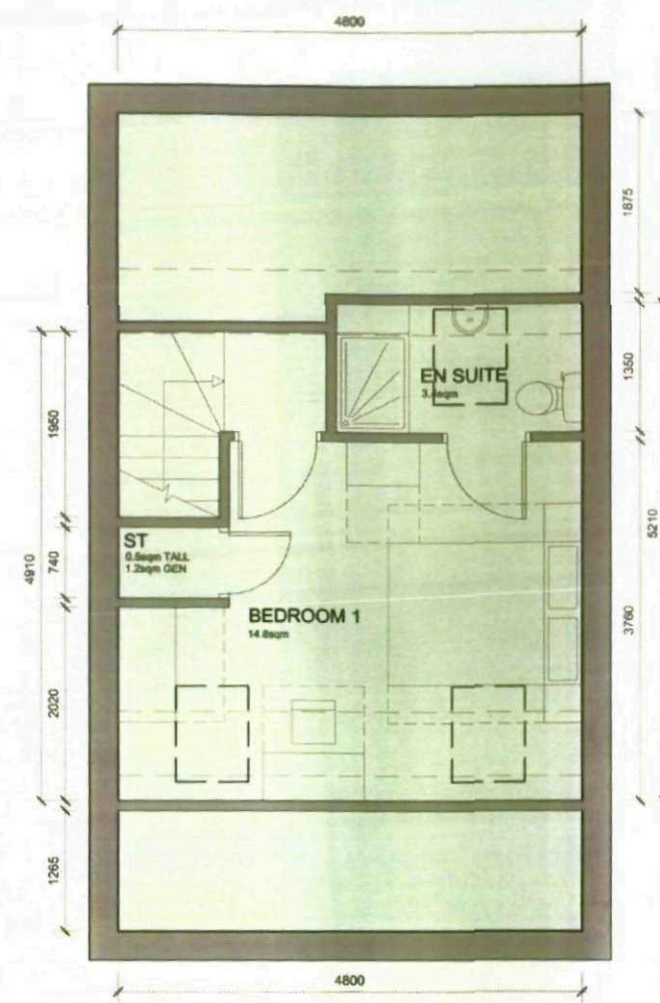
Woodhall, Woodhall Lane, Leeds LS16 5AA TEL 0113 239 3414 FAX 0113 256 9668 E Mail: architect@aconituswsm.com



GROUND FLOOR



FIRST FLOOR



SECOND FLOOR (simple pitched arrangement)
Plot size - 108.5 sqm

C. Aconthia WSM Architects
The general contractor is responsible for the verification of all dimensions on site and the architect is to be informed of any discrepancy.
The status of information contained in a computer copy of this drawing shall be limited to that conveyed by the paper copy.
Revisions:
A. 28.07.08 RJJ: Showings and materials added, roof lights indicated.
B. 29.07.08 RJJ: Window sizes on plan adjusted to correspond with standard treatment.
C. 01.08.08 C.CODDY: GA plan amended and furniture checked to suit.
D. 25.09.08 C.CODDY: GA plan amended and furniture checked to suit.
E. 08.10.08 C.CODDY: Timber PVI boarding on structure now shown as a Accort through coloured render system.
F. 12.12.08 RJJ: Accort through coloured render system approved. Doors updated in line with manufacturer's system.
G. 22.12.08 RJJ: Finished area reduced and amount of brickwork increased.

Barnsley Metropolitan Borough Council
26 JAN 2009
Corporate Mail Room

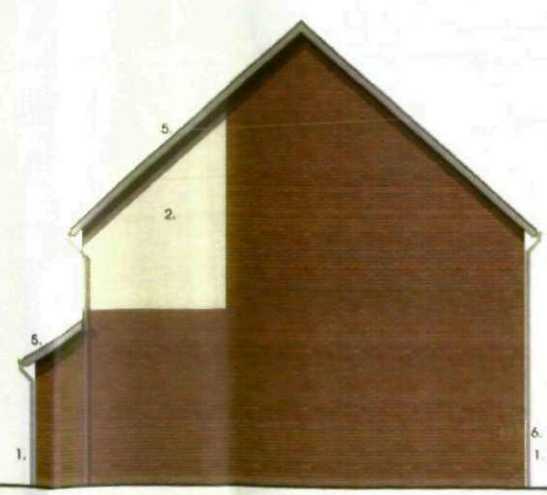
PLANNING



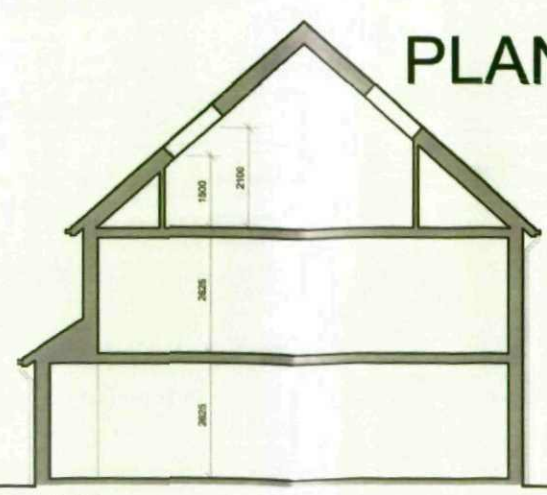
Entrance Elevation
Simple Pitched Roof Option



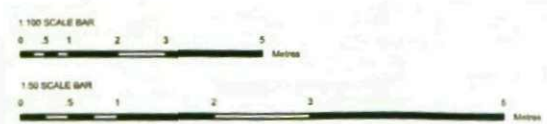
Rear Elevation



Side Elevation



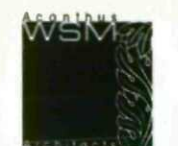
Section



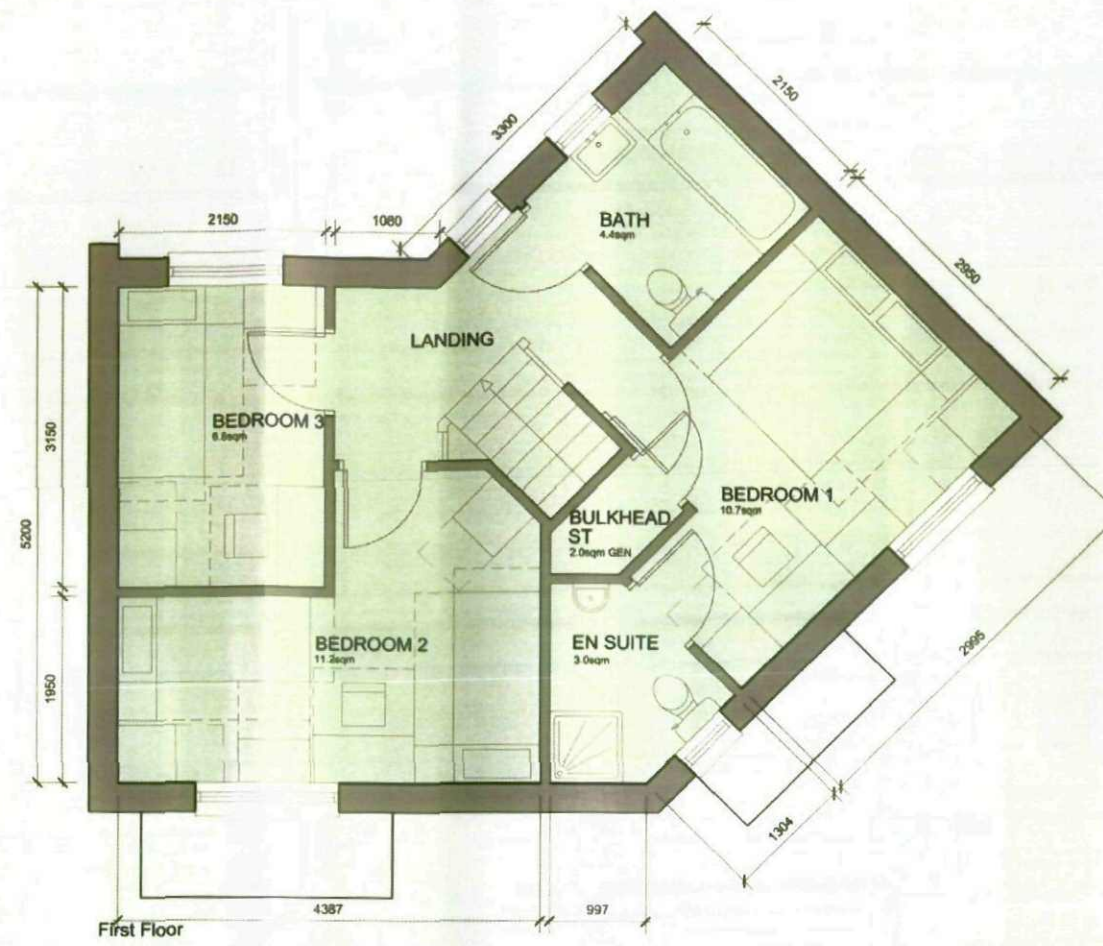
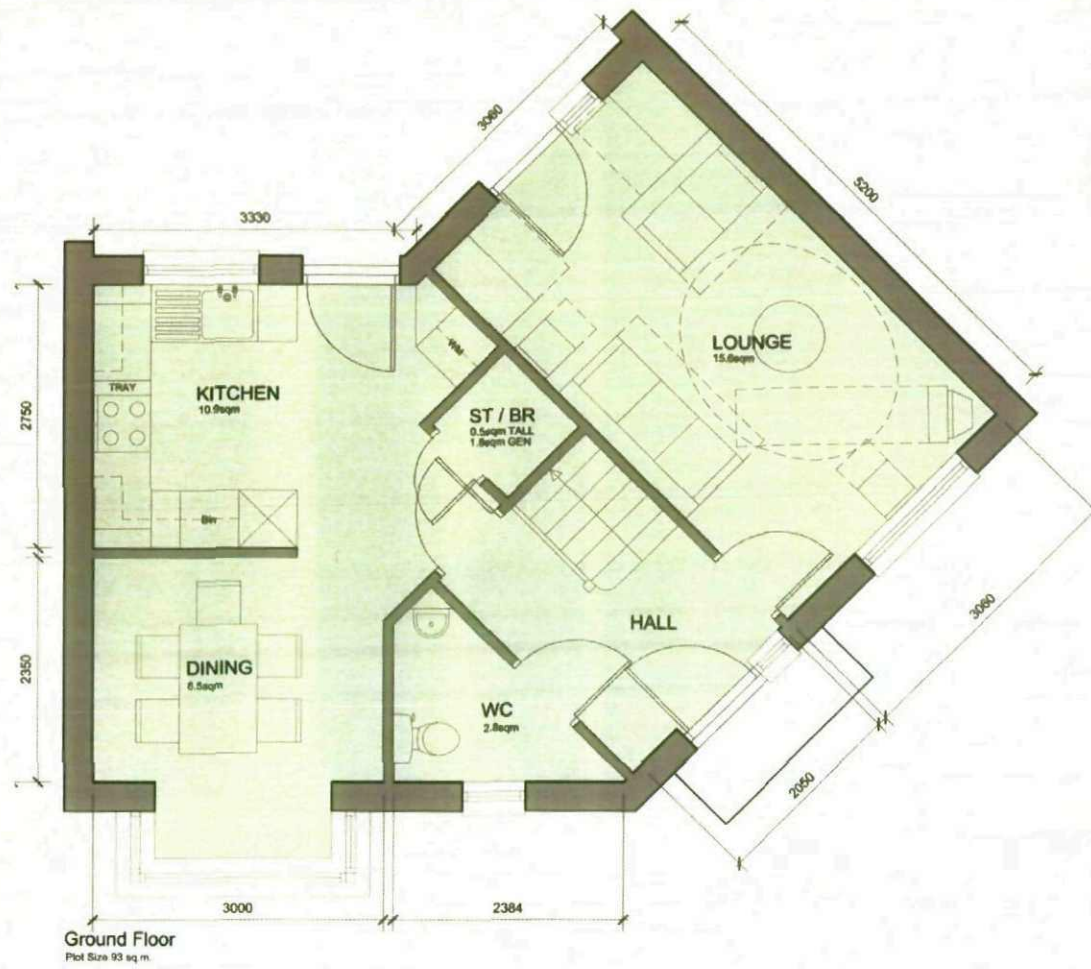
1. F1. Quality facing brickwork
2. Through coloured render system (ie. Sto / Weber or similar approved)
3. Stained timber framed double glazed windows
4. Interlocking concrete tiled roof
5. Solder course detail
6. Projecting entrance canopy with pressed metal colour coated edge detail
7. Parapet wall with pressed metal capping flashed over from roof.
8. galvanized steel balustrade
9. colour coated pressed metal panel



Scale: 1:100 / 1:50 @ A2
Date: July 2008
Drawn: RJJ/CO
Drawn No: 2121-015-128G



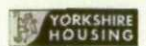
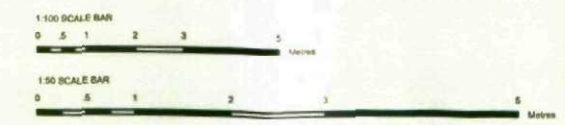
4b6p
New Lodge Crescent, Barnsley
Yorkshire Housing



© Aconitua WSM Architects
 The general contractor is responsible for the verification of dimensions on site and the architect is to be informed of any discrepancy.
 The scale of information contained in a computer copy of this drawing shall be limited to that conveyed by the paper copy.
 Revisions:
 A. 26.07.08 CO Kitchen Dining layout revised and an suite added
 B. 28.07.08 CO Window arrangement adjusted to accommodate internal furniture layout more effectively
 C. 01.08.08 C.CDDY GA plan generated and furniture added to suit
 D. 25.08.08 C.CDDY GA plan generated and furniture added to suit
 E. 07.10.08 C.CDDY Copy amended
 F. 08.12.08 C.CDDY Timber floor boarding on elevations now shown as a Accord through coloured render system
 G. 12.12.08 RJU Accord through coloured render system removed. Balustrade to render increases. Doors updated in line with manufacturer's arrangement.

1. F1 Quality facing brickwork
2. Through coloured render system (ie. Sto / Weber or similar approved)
4. Stained timber framed double glazed windows
5. Interlocking concrete tiled roof
6. Solder course detail
7. Projecting entrance canopy with pressed metal coloured coated edge detail
8. Parapet wall with pressed metal capping flashed over from roof.
9. galvanized steel balustrade
10. coloured coated pressed metal panel

Barnsley Metropolitan Borough Council
 26 JAN 2009
 Corporate Mail Room



Scale 1:100/1:50 @ A2
 Date July 2008
 Drawn RJU
 Dept No 2121-015-1240



PLANNING

3b5p - Corner Unit

New Lodge Crescent, Barnsley
 Yorkshire Housing



Entrance Elevation / side

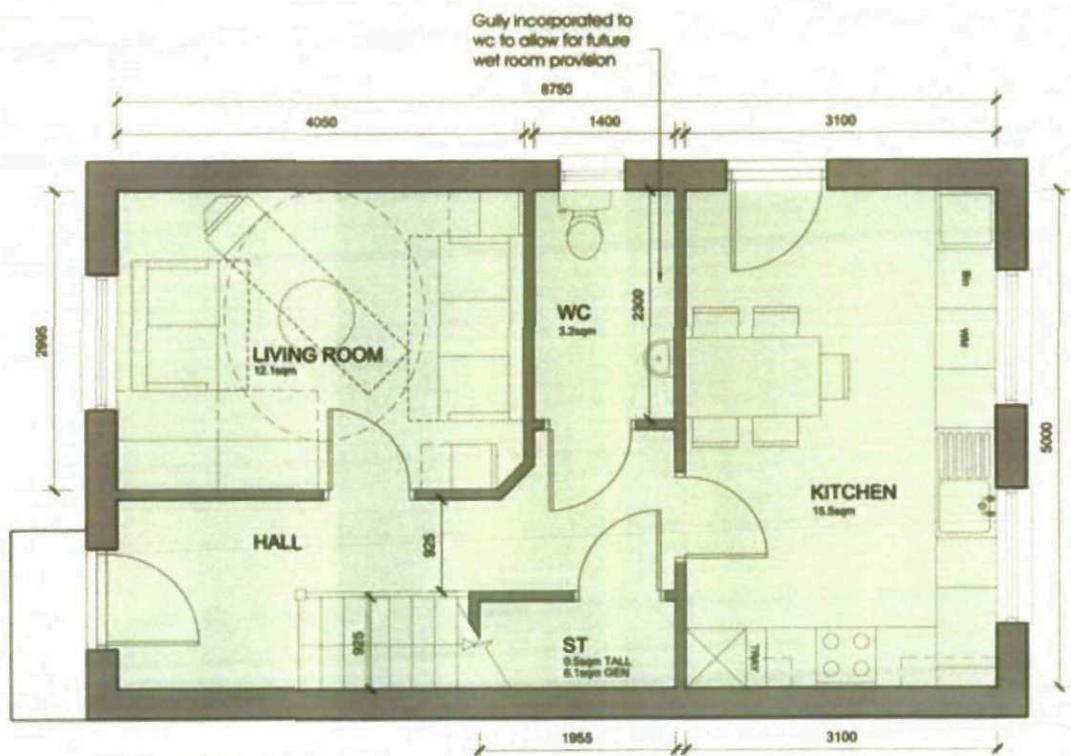


Rear Elevation / gable elevation

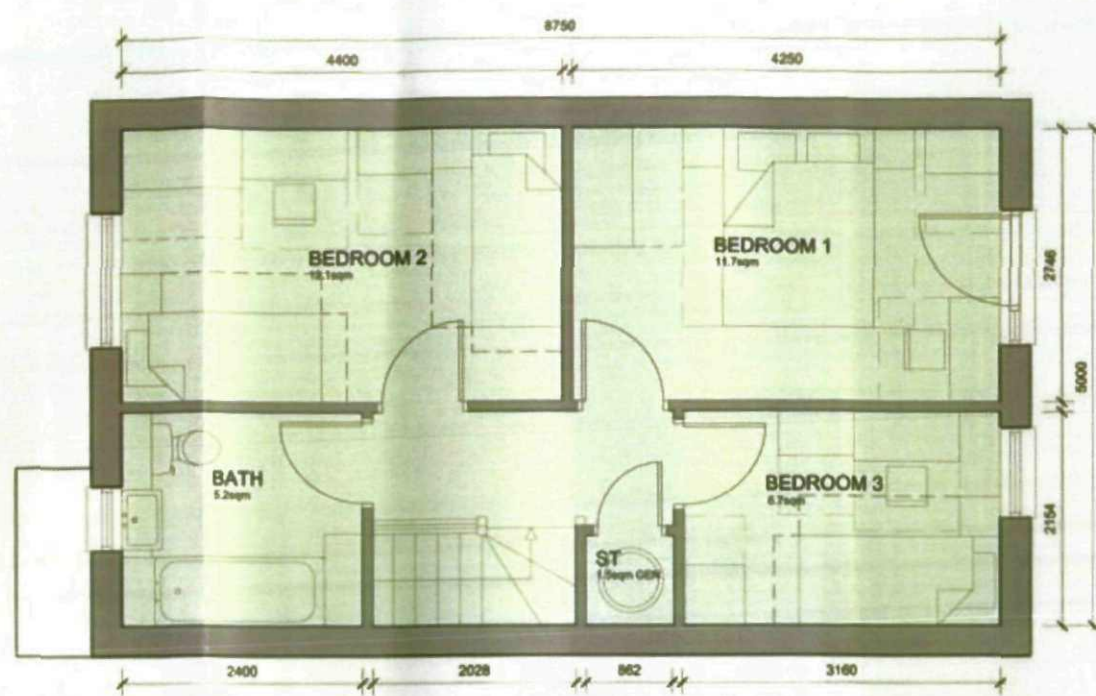
The general contractor is responsible for the verification of dimensions on site and the architect is to be informed of any discrepancy.

The status of information contained in a computer print of the drawing shall be linked to that conveyed by the paper site.

- Revisions:
- A. 01.08.08 C.CSDP GA plan amended and further allowed to sub.
 - B. 28.08.08 C.CSDP GA plan amended and further allowed to sub.
 - C. 07.10.08 C.CSDP Canopy amended.
 - D. 06.12.08 C.CSDP Timber PAV boarding on aluminium floor trawl on a Acoustic through coloured render system.
 - E. 12.12.08 RJ Acoustic through coloured render system amended. Drain indicated in line with manufacturer system.
 - F. 22.12.08 RJ Rendered area reduced and amount of brickwork increased.
 - G. 24.12.08 RJ Rendered area to gable simplified.



GROUND FLOOR
Plot size - 87.5sqm



FIRST FLOOR



Entrance Elevation
Simple Pitched Roof Option



Side Elevation



Rear Elevation

1. F1. Quality facing brickwork
2. Through coloured render system (e.g. Sto / Weber or similar approved)
3. Stained timber framed double glazed windows
4. Interlocking concrete tiled roof
5. Solder course detail
6. Projecting entrance canopy with brushed metal coloured coated edge detail
7. Parapet wall with pressed metal - coping finished over from roof.
8. galvanized steel balustrade
9. galvanized steel balustrade
10. coloured coated pressed metal pavers



Entrance Elevation
Gable to Steep Option



Side Elevation



Rear Elevation

PLANNING

Barnsley Metropolitan
Borough Council
28 JAN 2009
Corporate Mail Room

YORKSHIRE HOUSING

Scale: 1:100 / 1:50 @ A2
Date: JULY 2008
Drawn: RJJ
Check: 2121-015-1230

WSM

3b5p - 2 Storey
New Lodge Crescent, Barnsley
Yorkshire Housing

The general contractor is responsible for the verification of dimensions on site and the architect is to be informed of any discrepancy.

The status of information contained in a computer copy of the drawing shall be limited to that conveyed by the paper copy.

Revisions

- A. 01.08.08 C.CDDP GA plan amended and furniture added to suit.
- B. 25.09.08 C.CDDP GA plan amended and furniture added to suit.
- C. 07.10.08 C.CDDP Canopy amended.
- D. 08.12.08 C.CDDP Timber FVR boarding on elevations now shown as a recess through coloured render system.
- E. 12.12.08 RJJ Accent through coloured render system removed. Balustrade of brickwork to render parapet. Doors detailed in line with manufacturer's model.
- F. 22.12.08 RJJ Parapet wall reduced and amount of brickwork increased.
- G. 24.12.08 RJJ Render moved away from edge of window opening.



Entrance Elevation
Simple Pitched Roof Option



Rear Elevation



Side Elevation



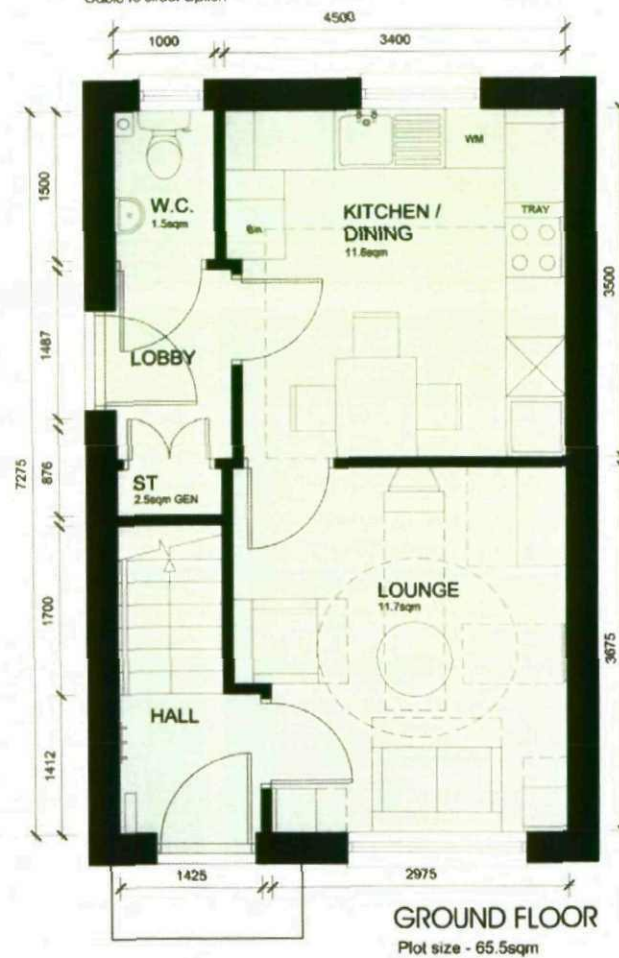
Entrance Elevation
Gable to Street Option



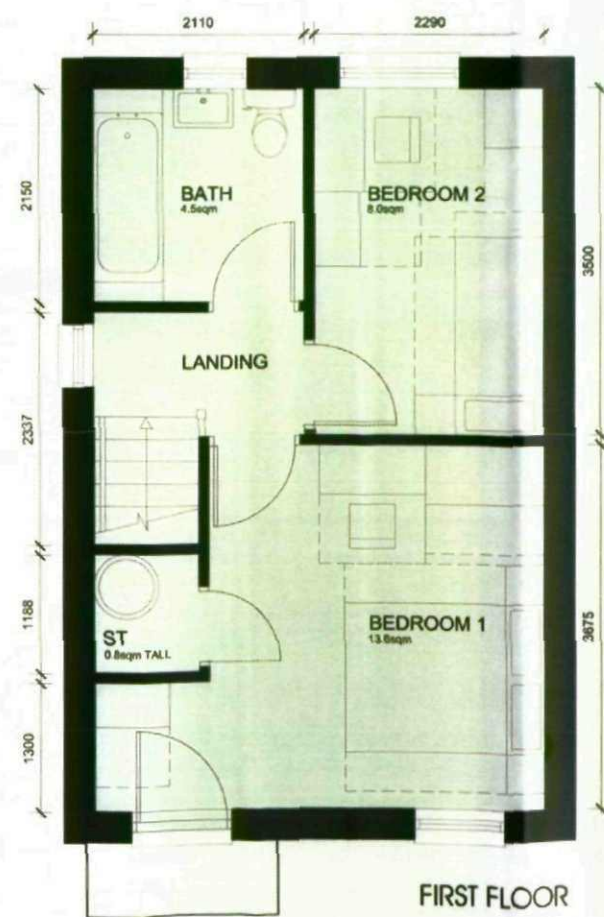
Rear Elevation



Side Elevation



GROUND FLOOR
Plot size - 65.5sqm



FIRST FLOOR

- 1. F1 Quality facing brickwork
- 2. Through coloured render system (ie Sto / Weber or similar approved)
- 4. Stained timber framed double glazed windows
- 5. Interlocking concrete tiled roof
- 6. Soldier course detail
- 7. Projecting entrance canopy with pressed metal colourcoated edge detail
- 8. Parapet wall with pressed metal capping flashed over from roof.
- 9. galvanized steel balustrade
- 10. colourcoated pressed metal panel

1:100 SCALE BAR



1:50 SCALE BAR



Barnsley Metropolitan
Borough Council

26 JAN 2009

Corporate Mail Room

PLANNING



Scale: 1:100 (1:50 @ a2)

Date: July 2008

Drawn: RJJ

Supp No: 2121-015-1226



2b3p - 2 Storey
New Lodge Crescent, Barnsley
Yorkshire Housing



Accorpha WSM Architects

The general contractor is responsible for the verification of dimensions on site and the architect is to be informed of any discrepancies.

The status of information contained in a computer copy of this drawing shall be limited to that conveyed by the paper copy.

Revisions:

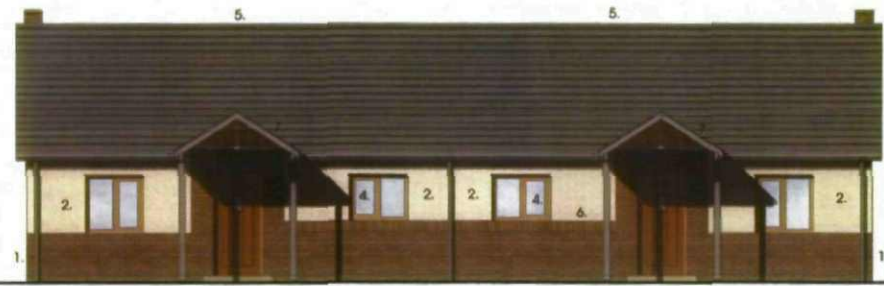
A. 29.07.08 RJJ
Window eaves on plan adjusted to correspond with elevational treatment.

B. 01.08.08 C.CODD
GA plan generated and furniture added to suit.

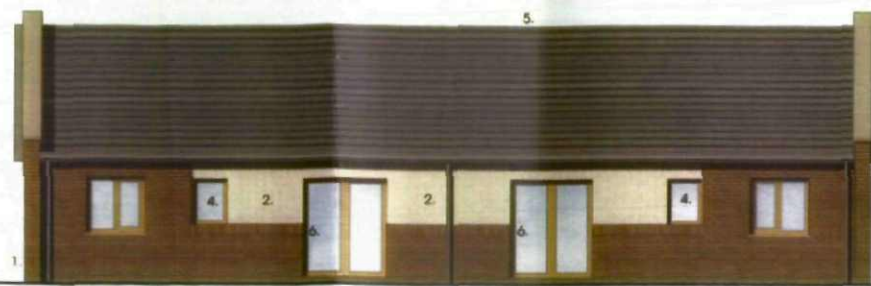
C. 25.09.08 C.CODD
GA plan generated and furniture added to suit.

D. 06.12.08 C.CODD
Timber floor boarding on elevations (now shown as a Accent through coloured render system).

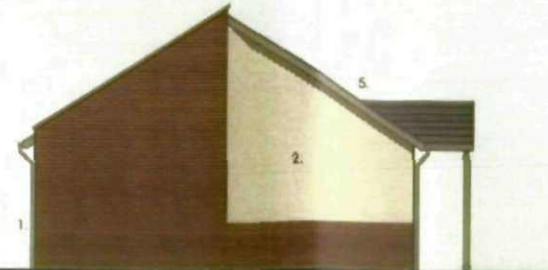
E. 12.12.08 RJJ
Accent render removed and front door applied to reflect manufacturer design.



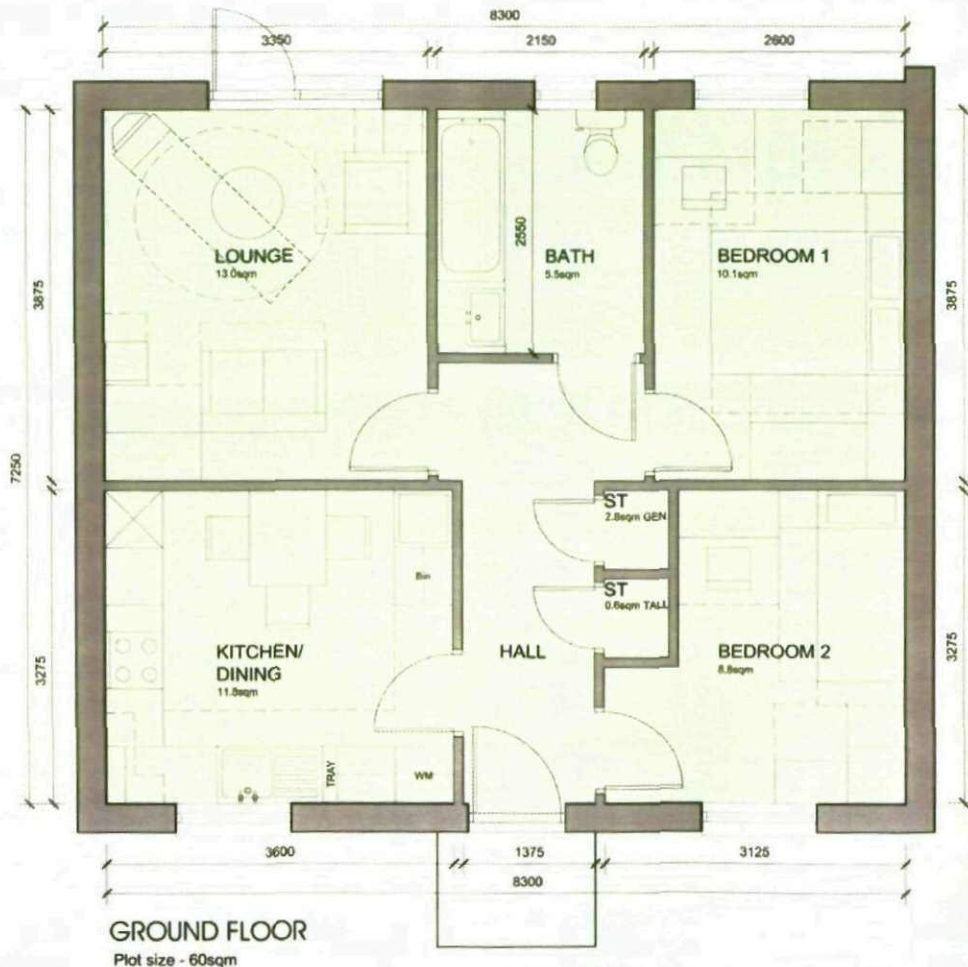
Entrance Elevation
Simple Pitched Roof Option



Rear Elevation



Side Elevation



1. FL Quality facing brickwork
2. Through coloured render system (ie. Sto / Weber or similar approved)
4. Stained timber framed double glazed windows
5. Interlocking concrete tiled roof
6. Soldier course detail
7. Projecting entrance canopy supported on timber posts
8. Parapet wall with pressed metal capping flashed over from roof.

PLANNING

Barnsley Metropolitan
Borough Council

28 JAN 2009

Corporate Mail Room

YORKSHIRE
HOUSING

Scale: 1:100 / 1:50 @ 02

Date: July 2008

Drawn: RJJ

Depth: 2121-015-1218

2b3p - Bungalow
New Lodge Crescent, Barnsley
Yorkshire Housing

