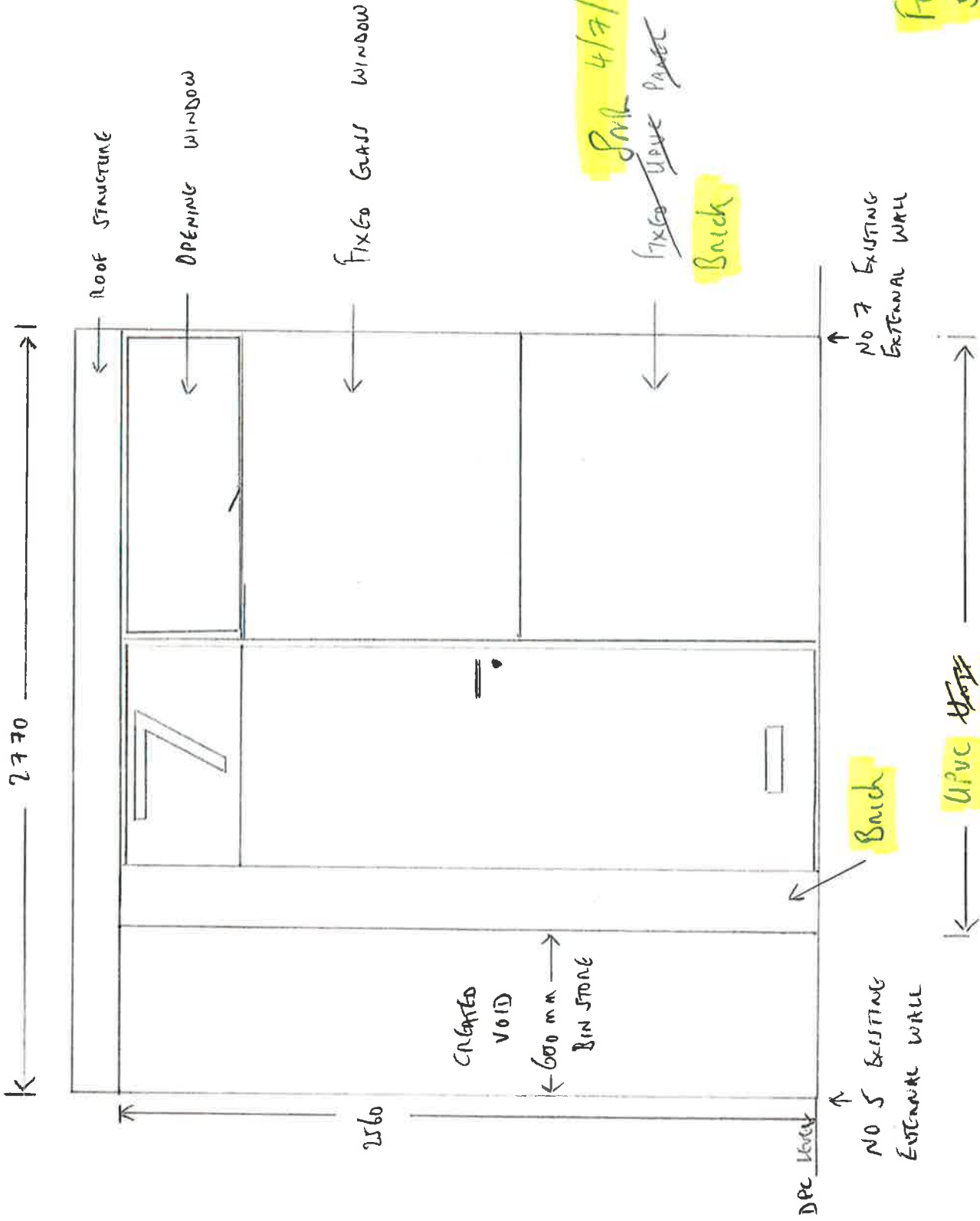


PROPOSED

SOUTH FACING VIEW
FRONT OF PROPERTY
SCALE 1:200 @ A4

ALL MEASUREMENTS
APPROXIMATE AND IN
MILLIMETRES.



4/7/19
AMENDMENTS IN
COLOUR

4/7/19
NOW BRICK BUILT
CONSTRUCTION AS
AGREED TO FACE
AND SIDE ELEV.
TO MATCH EXISTING
ON VERY CLOSE TO

FOUNDATION FOR BRICK
500mm CONCRETE
REINFORCED (REBAR)

4/7/19
SINK
~~UPVC~~
PANEL

BRICK

PROPOSED - NORTH FACING VIEW
REAR OF PROPERTY

SCALE 1:200 @ A4

ALL MEASUREMENTS
APPROXIMATE AND IN
MILLIMETRES

IN MATCHING BRICK
AS ABOVE

REINFORCEMENT OF EXISTING PILLARS
IN 7.3 Nm BLOCK INDICATED BY
DOTTED LINE (NOT SEEN EXTERNALLY)

UPVC DOUBLE GLAZED
WINDOW UNIT - THREE PANE

SM
CLASSING

BRICK FACE OR RENDER

MAY BE RENDERED TO
LOWER SECTION UNDER
NEW WINDOWS

BRICK TO
MATCH EXISTING
ON VERY CLOSE TO

4/7/19
AMENDMENTS IN COLOUR

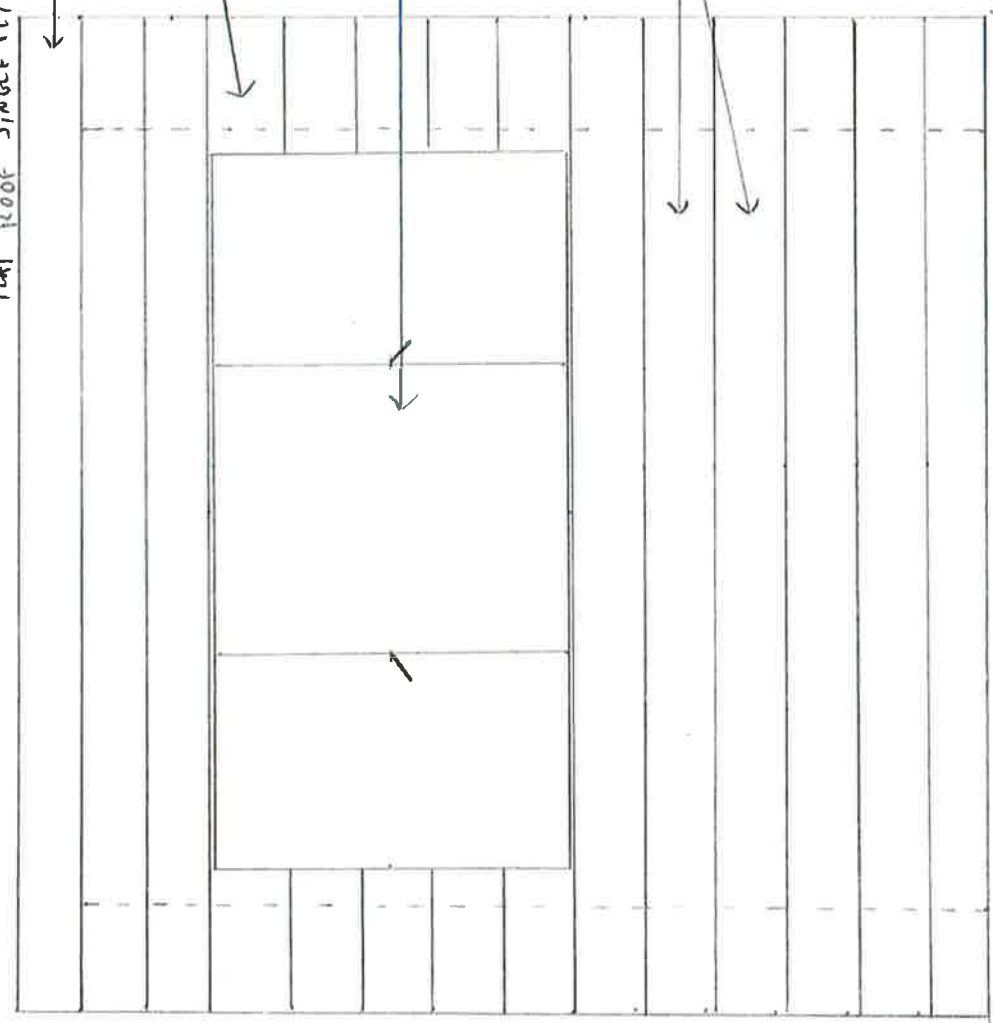
NO EXISTING
EXTERNAL WALL FACE

NO EXISTING
EXTERNAL WALL FACE

2765

FLAT ROOF SINGLE PLY MEMBRANE

ROOF STRUCTURE



2715

1170
TO
DPC

DPC LINE