



- Drainage Legend:**
- Existing foul water sewer and manhole
 - Existing combined sewer and manhole
 - Existing surface water sewer and manhole
 - Proposed foul water sewer and manhole
 - Proposed surface water sewer and manhole
 - Proposed foul water lateral and connection
 - Proposed surface water lateral and connection

- Externals Legend:**
- External Boundary
 - Finished Floor Level
 - Proposed Retaining Wall (+Height)

CIVIL / STRUCTURAL DESIGN RISK MANAGEMENT

Abnormal or unusual residual risks associated with the design outcomes shown on this drawing are:-

RSK LDE LTD has followed its Design Risk Management process for Hazard Elimination and Risk reduction in developing the designs shown on this drawing. Abnormal or unusual residual risks may be shown above where it is considered that such risk may not normally be expected by competent persons engaged on work of this nature or type.

- Notes:**
- This drawing is to be read in conjunction with all Architectural Drawings, Topographical Survey Drawing.
 - This drawing has been prepared for Planning purposes only, and a detailed design must be carried out prior to construction.
 - House levels are Finished Floor Levels (FFL's).
 - Figures quoted next to manholes / rodding eyes are cover & invert level, in metres AOD.
 - Footpaths are to be laid with a crossfall to allow drainage to soft landscaped areas.
 - Where possible all drainage runs shall be kept a minimum of 4.0m from any existing tree that is to be retained.
 - All drainage design is subject to technical approval, no connections shall be made to any public sewers without written consent from the drainage authority.

Drainage Information:

S33:
Flow - 36.9l/s
Head - 2.1m
Type - M56

S21:
Flow - 25.4l/s
Head - 3.2m
Type - M56

Full discharge rate of 74l/s not met due to the size of existing public sewers. Additional discharge points may be required to reduce storage requirements.

Hydrobrake to be a "Optimum" in detailed design to potentially reduce storage requirements further again.

Rev.	Date	Amendment	Drawn	Chk'd	App'd

RSK
LAND & DEVELOPMENT ENGINEERING LTD

Spring Lodge
172 Chester Road
Hesley
Chester, WA6 6AR
United Kingdom

Tel: +44 (0) 1524 738000
Fax: +44 (0) 1524 726033
Email: info@rsk.co.uk
Web: www.rsk.co.uk

Client: **Taylor Wimpey**

Project Title: **Kingstone School Barnsley**

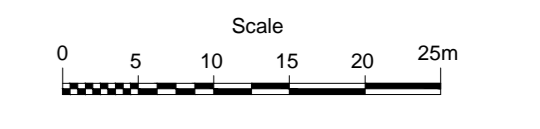
Drawing Title: **Drainage Layout**

Drawn	Date	Checked	Date	Approved	Date
MAR	APR 14	DR	APR 14	ISC	MAY 13

Scale: 1:500
Orig Size: A0
Dimensions

Project No: **880431**
Drawing No: **40-01**
Drawing File

Rev: **P1**



File Location: L:\000 - JOBS LIVE\880431 - KINGSTONE SCHOOL, BARNSELY\GARDEN\INFRASTRUCTURE\PLANNING\PACKAGE\001\DRAINAGE LAYOUT.DWG