

**Tree Survey and Implications Assessment****1.0 Proposal**

Planning Application for minor works to a dwelling affecting one tree.

**2.0 Tree Survey**

Fig 01. The image above shows T1, a small silver birch tree in the front garden of the bungalow.

Tree No	T1
Type	Silver Birch
Height	5 meters
Diameter	250mm
Spread	North 1.3m; East 1.3m; South 1.3m; West 1.3m.
Crown Ht	1.0m
Age	Young
Condition	Physical – Good; Structural – Good.
Action req;	None
Visual Amenity Value	Medium
Remaining Contribution	10 years
Category grading	C1
RPA Radius	3 meters

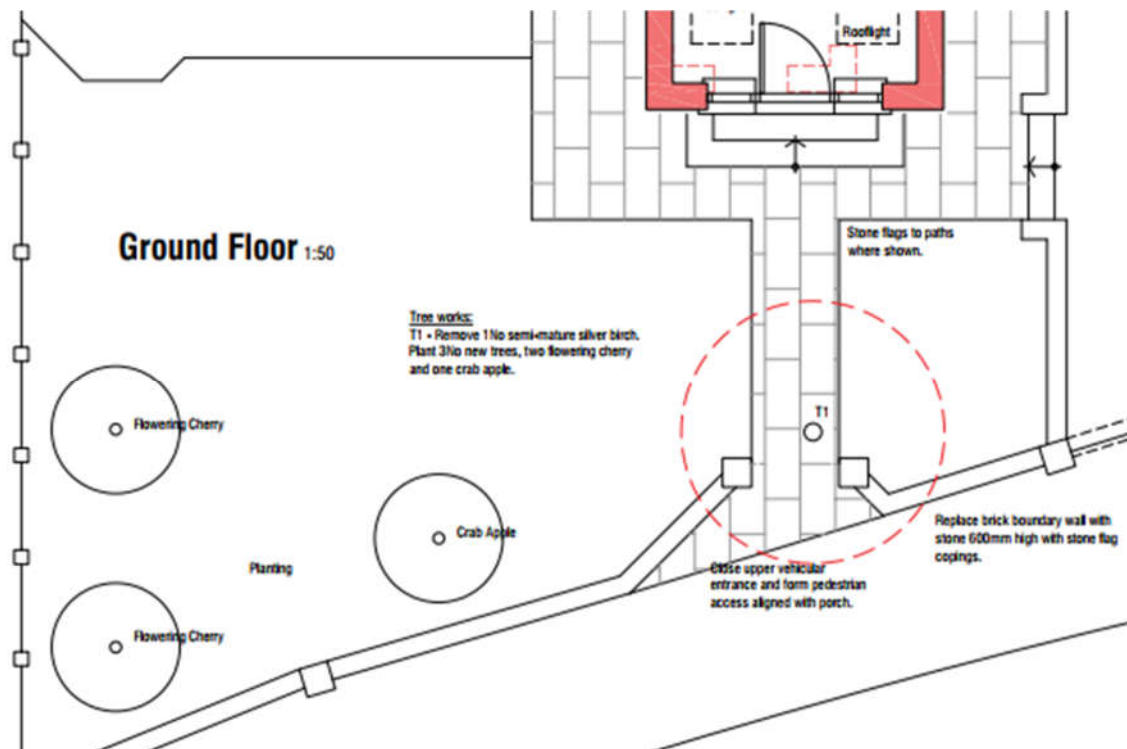
**Tree Survey and Implications Assessment**

Fig 02. Image above is an extract from drawing ref P01 Rev D. It shows the silver birch tree to be removed and the replacement planting.

### 3.0 Implications Assessment

The site is a small private front garden of a dwelling, located on the periphery of a TPO protection area in the Local Plan which includes Cannon Hall Estate and land to the north.

We propose the removal of a category C tree to allow for an improved pedestrian access and the making up of one of two vehicular access points along the site frontage. The making up of the vehicular access (to the left on the plan above) provides an opportunity to mitigate the loss of the silver birch with the planting of 3 No trees comprising two flowering cherry and a crab apple which will provide an enhancement to the visual amenity of the frontage.

MBooth Design