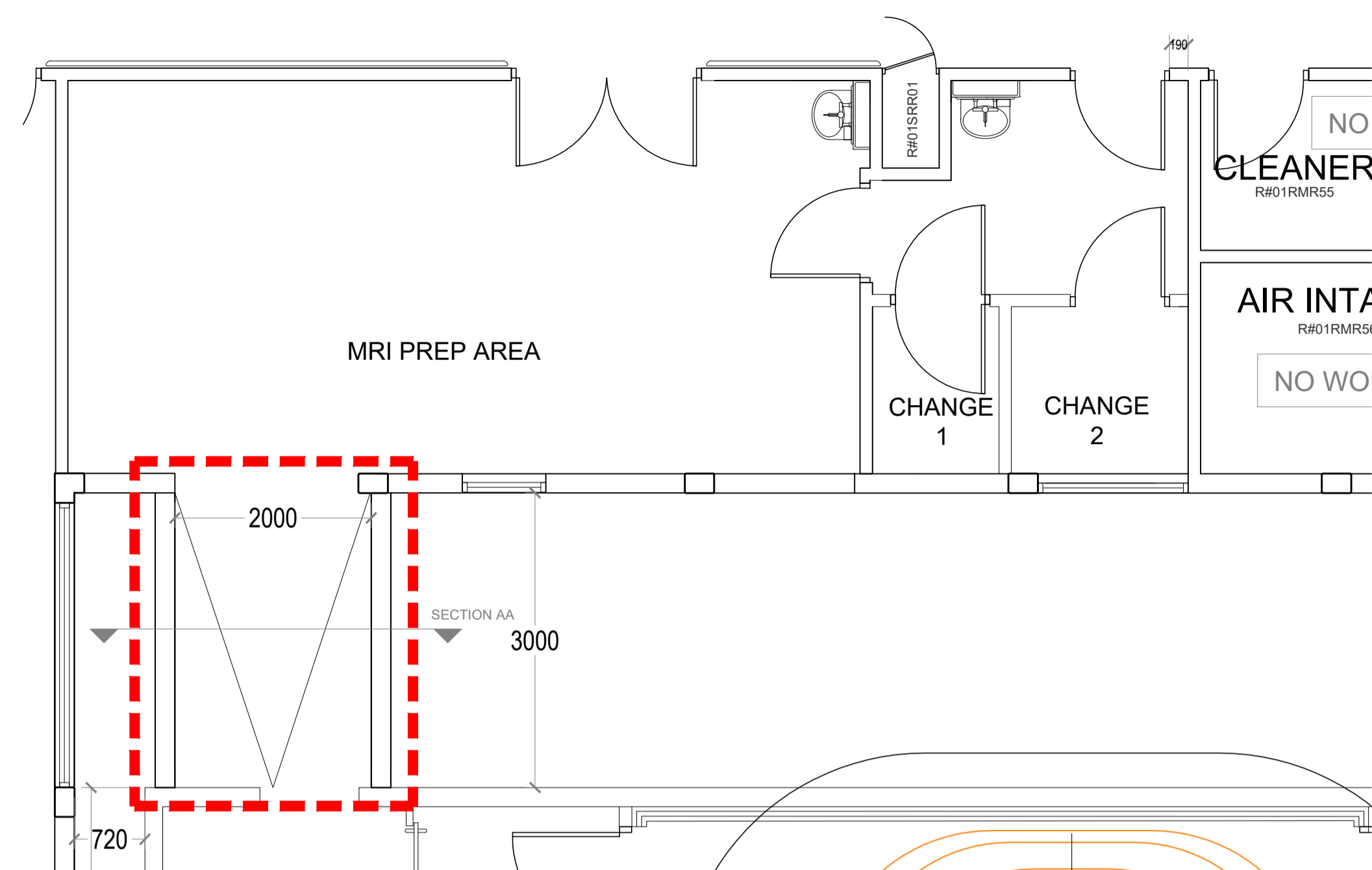


Drawing status

Drawn by	AP	Size	A1	Scale	VAR.
Notes				Status	Rev Date
PRELIMINARY STUDY				P	-
AMENDMENTS: Rockwool insulation added				P	A
AMENDMENTS: D02 handed the other way.				P	B 16/03/21
AMENDMENTS: - D03 and D05 located to be 190mm from the neighbouring wall. - D05 opening direction has been changed to be outwards. - Change 1 has been widened by 100mm towards the MRI Prep Area. - D4 has been changed to be a double swing door. - Cabinets in the MRI Prep Area have been moved 75mm away from the wall to create space for the scribe.				P	C 19/03/21
AMENDMENTS: Existing column in wall has been moved to correct location. Accurate dimension provided by the contractor.				P	D 22/03/21
AMENDMENTS: WHB locations amended.				P	E 31/03/21

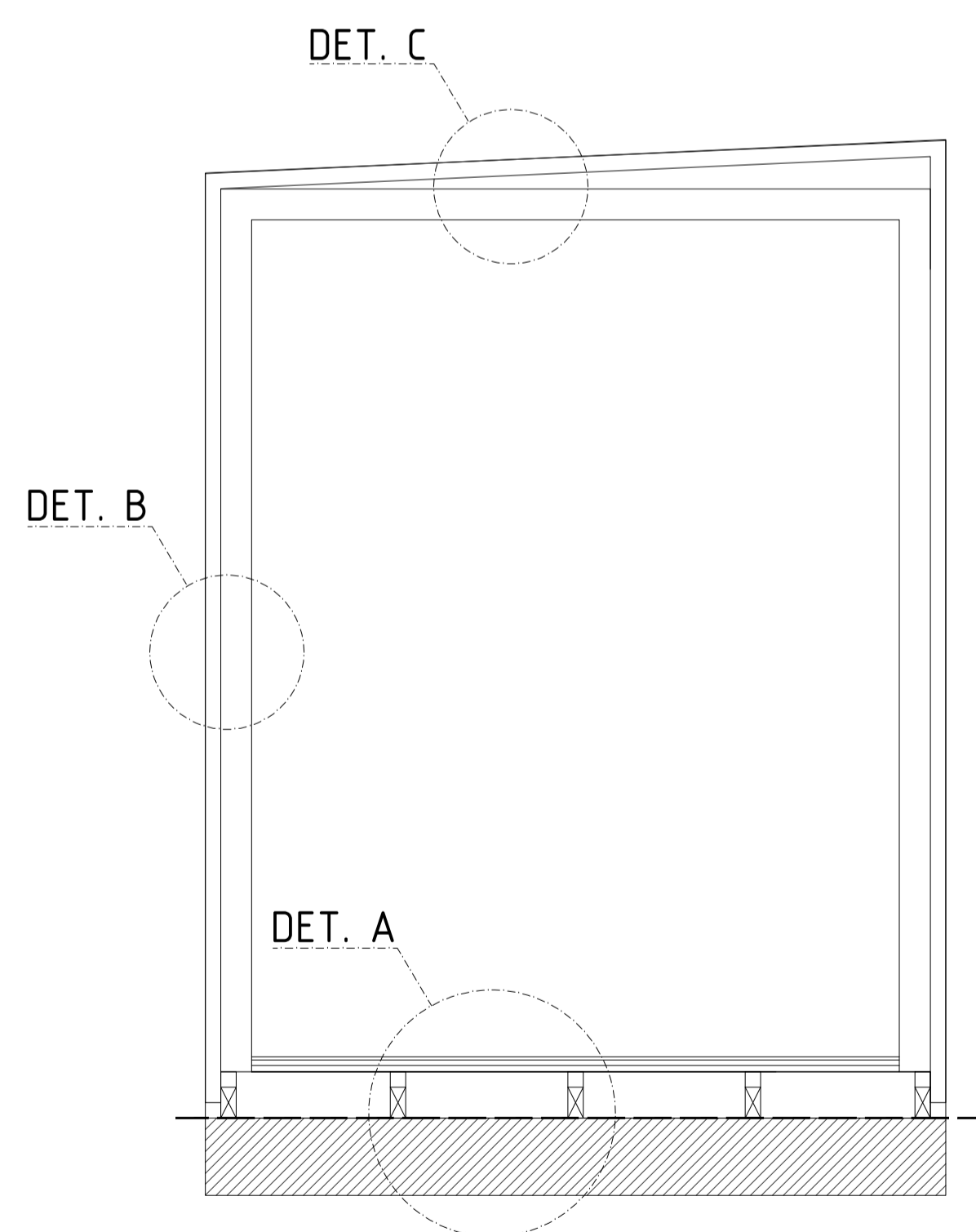


THE LINK WITH RAMP TO BE 3000mm LONG (FROM FACE TO FACE)  
AND 2000mm WIDE (INTERNALLY)

THE NEW MODULAR BUILDING TO BE 3000 mm & 720mm AWAY  
FROM THE EXISTING

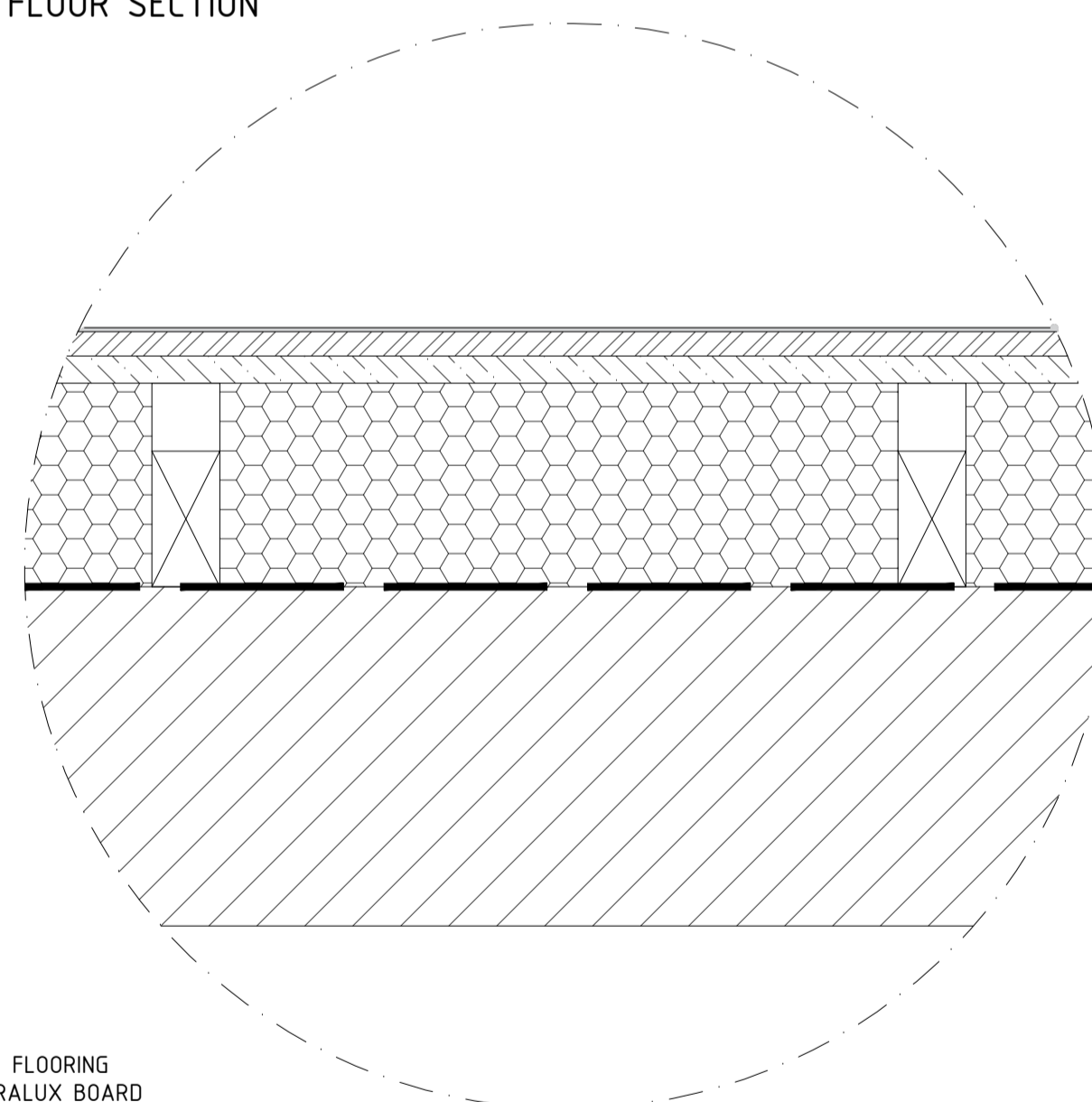
THE RAMP TO BE NO STEEPER THAN 1 IN 20.

○ LOCATION OF THE LINK  
1:50



○ SECTION AA  
1:20

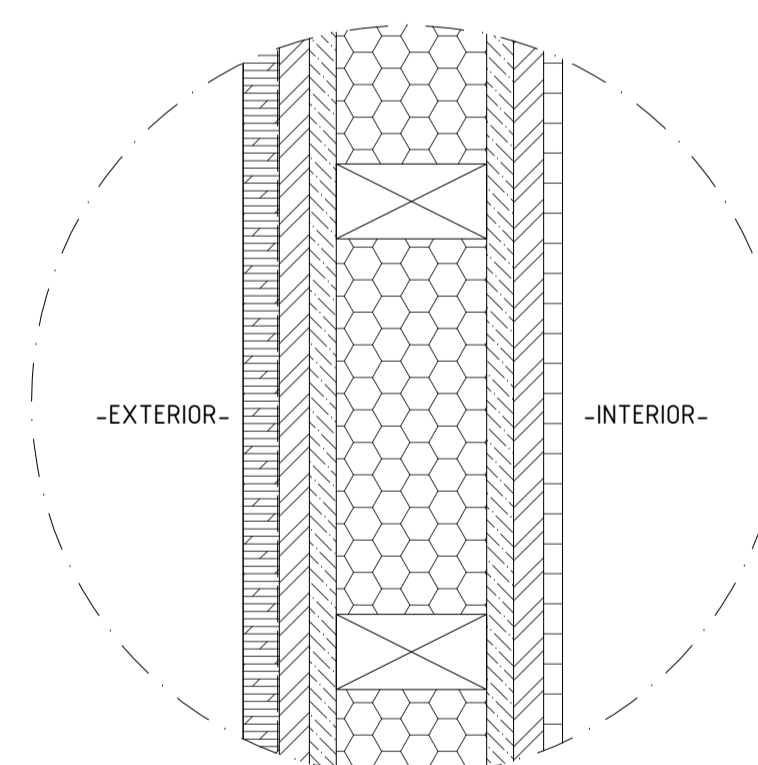
DET. A - FLOOR SECTION



3mm VINYL FLOORING  
20mm SUPRALUX BOARD  
18mm EXTERNAL QUALITY PLYWOOD  
TIMBER STUDS WITH COMPACTED ROCKWOOL INSULATION IN BETWEEN  
ICOPAL MEMBRANE 2000 GUAGE VISQUEEN  
CONCRETE BASE

PLEASE REFER TO [NBS P10 105](#) FOR FLOOR STUD DETAILS.

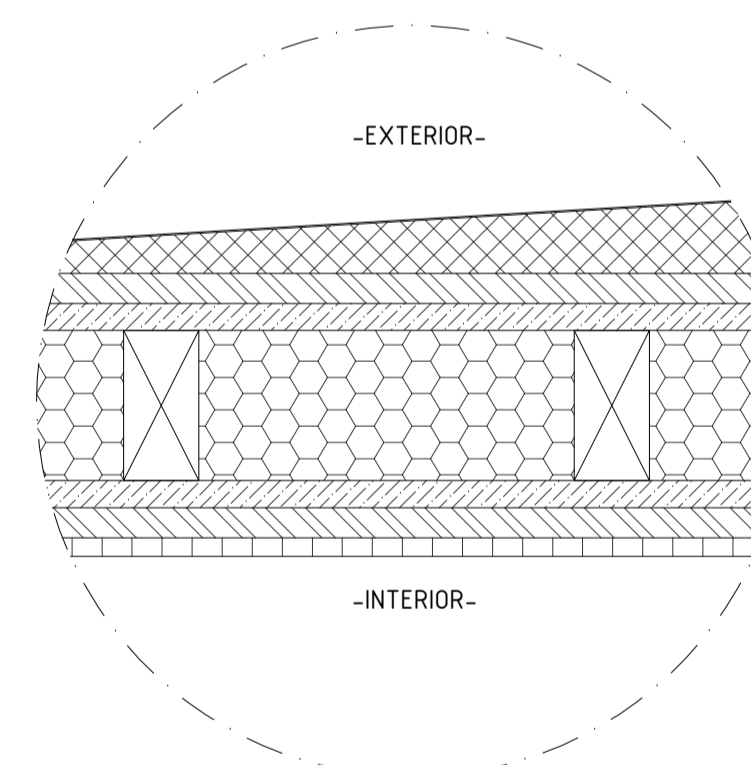
DET. B - WALL SECTION



-EXTERIOR-  
24mm PPC ALUMINIUM BOARD WITH BATTENS  
TYVEX BREATHER MEMBRANE  
20mm SUPRALUX BOARD  
18mm EXTERNAL QUALITY PLYWOOD  
100mm TIMBER STUDS WITH INSULATION IN BETWEEN  
18mm EXTERNAL QUALITY PLYWOOD  
20mm SUPRALUX BOARD  
12.5mm PLASTERBOARD AND SKIM  
-INTERIOR-

PLEASE REFER TO [NBS P10 125](#) FOR THE DETAILS OF THE WALL STUDS.

DET. C - ROOF SECTION



-EXTERIOR-  
SINGLE PLY MEMBRANE - ICOPAL  
SLOPED BATTENS  
20mm SUPRALUX BOARD  
18mm EXTERNAL QUALITY PLYWOOD  
100mm TIMBER STUDS WITH INSULATION IN BETWEEN  
18mm EXTERNAL QUALITY PLYWOOD  
20mm SUPRALUX BOARD  
12.5mm PLASTERBOARD AND SKIM  
-INTERIOR-

Drawing status annotation  
P-Preliminary T-Tender D-Design (post preliminary) C-Construction As-Built

Client

BARNSELY HOSPITAL NHS  
FOUNDATION TRUST

Project title

MODULAR MRI

Project no

170/032

Drawing title

STUDY OF PROPOSED  
LINK TO MODULAR MRI

Drawing no

(2-)01

Status Revision

P E