



**EXPANDA
RANGE**

FLAT-PACKED, MAN-PORTABLE, MODULAR BUILDINGS



**EXPANDA
KABIN** 

the flexible workspace building

...that can go anywhere!

EXPANDAKABIN

The insulated, flat-pack, man-portable, modular office building



All components are **totally man-portable** and can be carried into locations with **restricted access** for the **simple assembly** (approx 1 hour)



The **only** tools required are a **socket set and screw driver**

The panelled system is manufactured in **galvanized steel** with a cement particle floor for a long life span

The **flexible panel system** means that **doors, walls and windows can always be relocated** within the structure



Units can be linked together to form larger areas of storage space, side to side or end to end

If not in use **the Expandakabin™ can be returned** to its **flat-packed** form for efficient transportation or storage

All parts of an Expandakabin™ can be replaced.

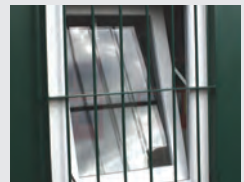
Durable protective powder coated finish:



Expandakabin™ accessories

ELECTRIC PACK: HEATER, LIGHTING KIT, FUSE BOX, TRUNKING, PLUGS, SWITCHES...

EXTERNAL WINDOW GRILLE



EXPANDAKABIN E 1



4.3m Expandakabin™ model shown



arrives flat-packed



man-portable



simple to assemble



ready for use



use the linking kit to form larger buildings

LINKING KIT



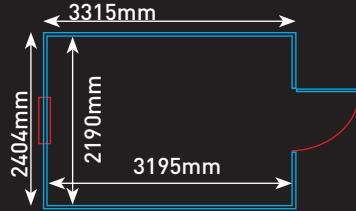
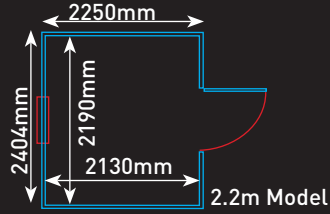
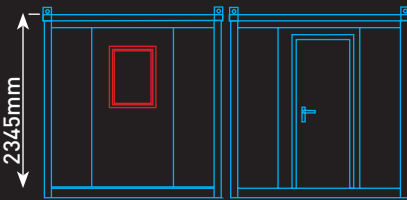
OPTIONAL FULL HEIGHT WINDOWS AND DOORS



Basic sizes (all expandable)



Length: 2.2m or 3.3m or 4.3m
 Width: 2.3m (excluding gutter)
 Height: 2.3m

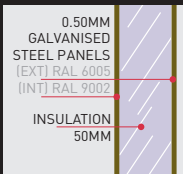


Technical specification

DIMENSIONS

2250mm (L) x 2302mm (W). Weight: 620kg
 3315mm (L) x 2302mm (W). Weight: 890kg
 4380mm (L) x 2302mm (W). Weight: 982kg
 External height 2345mm

WALLS:



Vacuum bonded sandwich panels. Powder coated galvanized steel (0.63mm), exterior 'moss green', internal 'white'. Insulation - 50mm polystyrene

ROOF:

Exterior covering - 0.50 mm powder coated box profile galvanized steel with two gutters for effective rainwater disposal to all four corners with additional drain points along the gutter.
 Interior - vacuum bonded sandwich panels as per walls.
 Snow loading - 0.75 kN/m² evenly distributed

CHASSIS / FRAME:

Box profile, hot dipped galvanized steel
 Corner columns - 1.5mm cold formed DKP steel.
 Supplied with 4 lifting eyes. All surfaces are powder coated in RAL 6005 (Moss Green).
 Floor Construction - cement particle board covered with 2mm PVC linoleum (flash point B1 - difficult to burn, smoke density Q1). Floor section has no insulation.
 Floor loading - 150kg/m² evenly distributed.

DOOR:

Frame - cold formed powder coated 1.25 mm galvanized steel.
 Door - both surfaces powder coated (External - Moss Green, internal - White) galvanized steel
 0.50 mm galvanized steel, complete with door handle and replaceable euro cylinder lock.

STANDARD WINDOW:

Frames - 1.25 mm cold formed powder coated galvanized steel.
 Window - uPVC double glazed window frame with vacuum sealed unit. (4+9+4).
 Size - 800 mm x 600 mm
 Type - vertically inward opening mechanism with single handle and lock.
 Other types available, please ask for details.

ELECTRICAL EQUIPMENT:

No electrical wiring and equipment fitted.
 The unit is designed to have a surface mounted electrical installation. Optional electrical pack available.

EXPANDABLE

Units can be enlarged by the addition of further units. A special linking kit is available to extend side to side or end to end.

NOTE:

Expandakabin™ is not designed to comply with Building Regulations approval.
 Doors and windows can be fitted anywhere in the units.

uPVC double glazed window
included as standard



BUILDING CHECKLIST

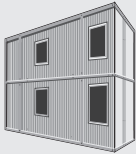
	Expandakabin™	Standard Cabin
Flat-packed	✓	✗
Man-portable	✓	✗
Flexible	✓	✗
Insulated	✓	✓
Simple Assembly	✓	✗
Modular	✓	✗



EXPANDA RANGE

FLAT-PACKED, MAN-PORTABLE, MODULAR BUILDINGS

EXPANDACOM



manportable 20ft office

EXPANDACHEM



sumped materials store

EXPANDASTORE



storage building

BIKESTORE



secure bike storage

GARDENSTORE



secure garden storage

Ideal for siting in locations with limited access. Light enough to be man handled and with components that are small enough to fit through small passageways.

Extraspace Industries

Unit 27, Hobbs Industrial Estate

Newchapel Near Lingfield

Surrey. RH7 6HN

Phone: 01342 830040

Email: enquiries@extraspace.co.uk

www.extraspace.co.uk