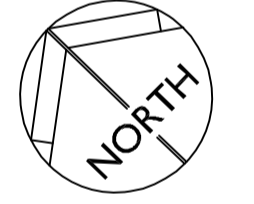


- Key**  
**SF Soft Landscaping**
- Existing vegetation
  - Existing vegetation removed to facilitate construction
  - Existing tree
  - Grass - turf
  - Proposed shrub bed planting
  - Proposed woodland mix planting - protected with Netlon guards
  - Proposed hedge
  - Proposed tree feathered 3m height - protected with rabbit proof spiral guard
  - Proposed tree extra heavy standard 14-16cm girth - protected with rabbit proof spiral guard
  - Proposed wildflower seed (Basic mix)
  - Proposed wildflower seed (Wetland and pond mix)
  - Spot planting
- Key**  
**SF Fencing/boundaries**
- Tree protection fencing

See drawing SF2660 LLO1 for continuation



Rev.	Date	Description	Drawn	Checked
E	01.12.17	Amended schedule	CR	CW
D	24.11.17	Updated in line with new xref	TM	MS
C	10.10.17	Added woodland mix and extra trees	TM	MS
B	18.07.17	Updated in line with new xref	TM	MS
A	15.06.17	Updated following comments	TM	MS

**Schedule - LLO2**

Number	Species	Girth	Specification
1 No.	Acer campestre	14-16cm	Extra Heavy Standard
3 No.	Betula pendula 'Tristis'	14-16cm	Extra Heavy Standard
1 No.	Quercus robur 'Fastigata'		Feather
2 No.	Sorbus aucuparia 'Edules'	14-16cm	Extra Heavy Standard
2 No.	Sorbus aucuparia 'Golden Wonder'	14-16cm	Extra Heavy Standard
<b>Total : 9 No.</b>			

Number	Species	Pot Size	Height	Specification	Density
134 No.	Lonicera pileata 'Maigrun'	3L	20-30cm		5/m <sup>2</sup>
284 No.	Lonicera pileata 'Maigrun'	3L	20-30cm	Double staggered row	No.
219 No.	Potentilla 'Abbotswood'	3L	20-30cm		5/m <sup>2</sup>
41 No.	Potentilla fruticosa 'Primrose Beauty'	3L	20-30cm		5/m <sup>2</sup>
161 No.	Rosa 'Bonica'	5L	30-45cm		4/m <sup>2</sup>
<b>Total : 839 No.</b>					

**Woodland Shrub Mix**

%	Number	Species	Height	Specification	Density
10%	30 No.	Acer campestre	175-200cm	Feather	1.2Ctr
20%	59 No.	Corylus avellana	60-80cm	1+1	1.2Ctr
15%	44 No.	Cornus monogyna	60-80cm	1+1	1.2Ctr
15%	44 No.	Prunus spinosa	60-80cm	1+1	1.2Ctr
25%	74 No.	Rosa canina	40-60cm		1.2Ctr
15%	44 No.	Viburnum opulus	40-60cm		1.2Ctr
<b>Total : 100% Total : 295 No.</b>					

**Herbaceous**

Number	Species	Pot Size	Specification	Density
620 No.	Alchemilla mollis	2L	Single row	No.
164 No.	Bergenia cordifolia 'Purpurea'	1L		8/m <sup>2</sup>
7 No.	Cortaderia selloana	5L		1/m <sup>2</sup>
6 No.	Cortaderia selloana	5L		Counted
50 No.	Geranium 'Johnson's Blue'	1L		8/m <sup>2</sup>
82 No.	Geranium mac. 'Album'	1L		8/m <sup>2</sup>
128 No.	Geranium mac. 'Bevan's Variety'	1L		8/m <sup>2</sup>
301 No.	Nepeta mussinii	1L		8/m <sup>2</sup>
<b>Total : 1358 No.</b>				

**Hedges**

Number	Species	Height	Specification	Density
790 No.	Prunus laurocerasus 'Rotundifolia'	Selected to 90cm	Double staggered row	4/m
<b>Total : 790 No.</b>				

**Grass Turf**  
 Rolawn Medallion™ turf to 83936 (Or equal and approved turf)

Typical mixture:

- Evita Perennial Ryegrass 12.5%
- Saavignon Slender Creeping Red Fescue 20%
- Leonora Slender Creeping Red Fescue 15%
- Musica Chewings Fescue 20%
- Corn Smooth Stalked Meadow Grass 10%
- Limousine Smooth Stalked Meadow Grass 10%

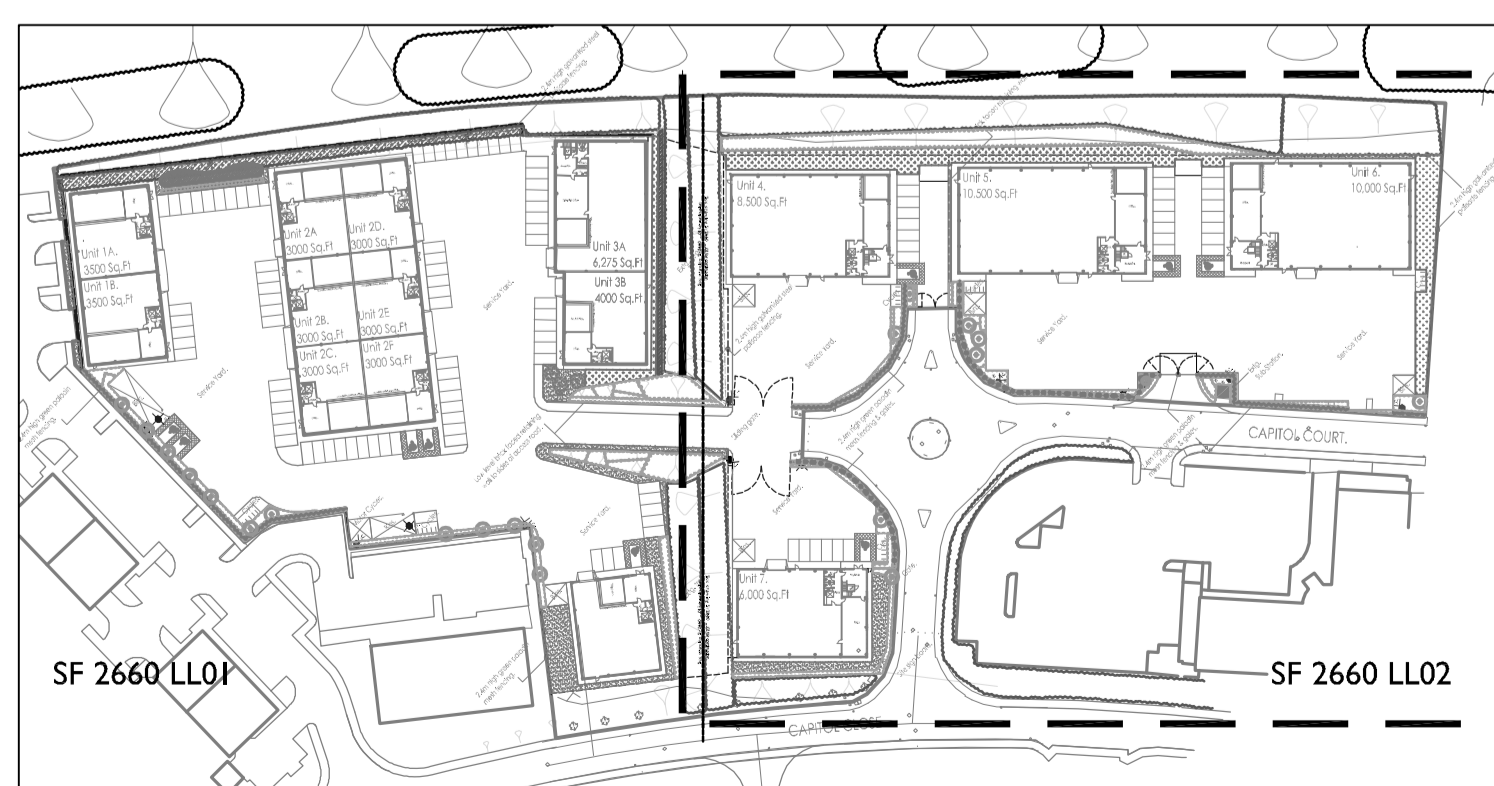
Supplier: Rolawn Ltd  
[www.rolawn.co.uk](http://www.rolawn.co.uk)

**Wildflower Seed**  
 John Chambers Pro Basic 12 8020 mix  
 Product code = 130C4125A or similar and approved

Wildflower	%
Lady's Bedstraw	1.2
Common Bird's-foot-trefoil	2.0
Salsal Burnet	3.0
Meadow Buttercup	2.9
White Campion	1.5
Wild Carrot	1.2
Oxeye Daisy	0.5
Black Medick	2.5
Ribwort Plantain	2.4
Sedgell	1.2
Yarrow	2.0
Common Sorrel	0.5
<b>Total</b>	<b>20</b>

Low maintenance grasses 80

Supplier: John Chambers Wildflowers  
[www.johnchamberswildflowers.co.uk](http://www.johnchamberswildflowers.co.uk)



Location plan  
 NOT TO SCALE