

## Planning Sheet Notes:

Type and style of roof tiles and facing materials including external features such as canopies, cills, heads, fascia, windows and doors as site specification and to Local Authority Approval.  
**SHOWN INDICATIVE ONLY ON THIS PLAN**



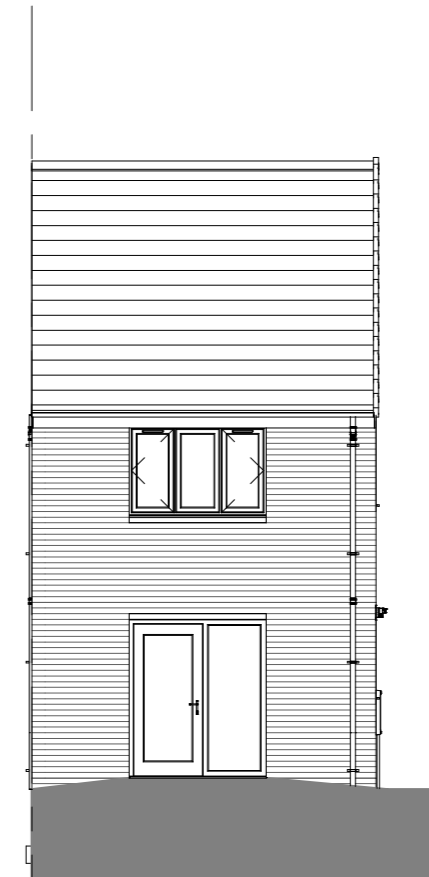
Front Elevation.

1 : 100



Left Elevation.

1 : 100

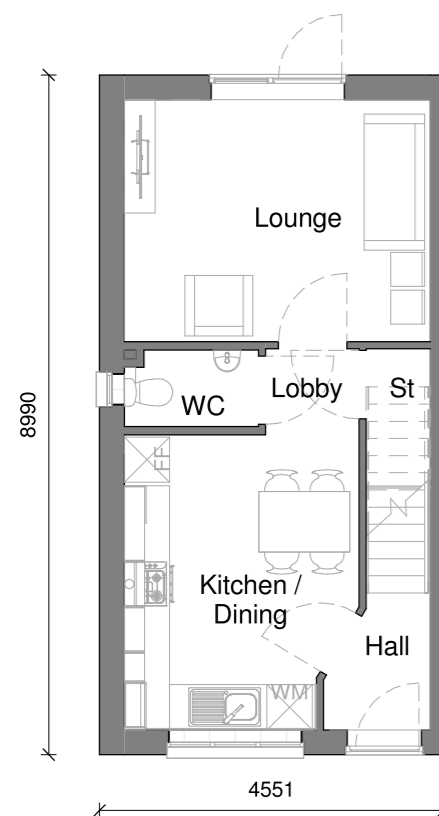


Rear Elevation.

1 : 100

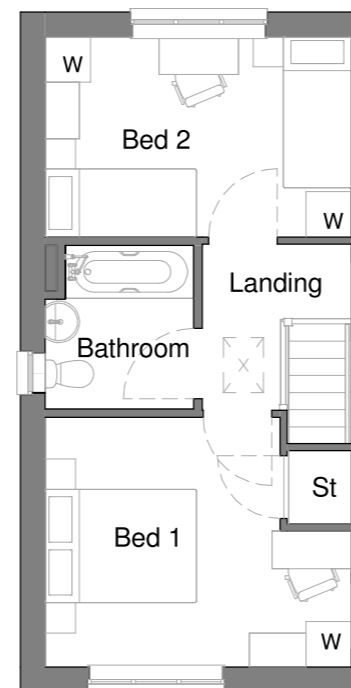
Area Schedule - Sales		
Name	Area	Area Sq Ft
Ground Floor GIA	33.75 m <sup>2</sup>	363.24 SF
First Floor GIA	33.75 m <sup>2</sup>	363.24 SF
	67.49 m <sup>2</sup>	726.48 SF

Area Schedule - Build		
Name	Area	Area Sq Ft
Ground Floor Build	34.37 m <sup>2</sup>	369.93 SF
First Floor Build	34.37 m <sup>2</sup>	369.93 SF
	68.74 m <sup>2</sup>	739.87 SF



Ground Floor.

1 : 100



First Floor.

1 : 100

House Type Range		Sub Range	
2018 Range		DQS	
Scale at A3	Date	Drawn	Checked
As indicated	05.12.17	JF	NTL
Pack Title			
The Lawton Working Drawing Pack			
Sheet Name			
Planning Drawings			
Coins Code	House Type Code	Plotting	Handing
	LAWTON	END	AS
Style	Issue		
BB01			
Project Drawing Pack No.	Project	Pack No.	Rev
	18CORE	2010	1
		Sheet	
			201

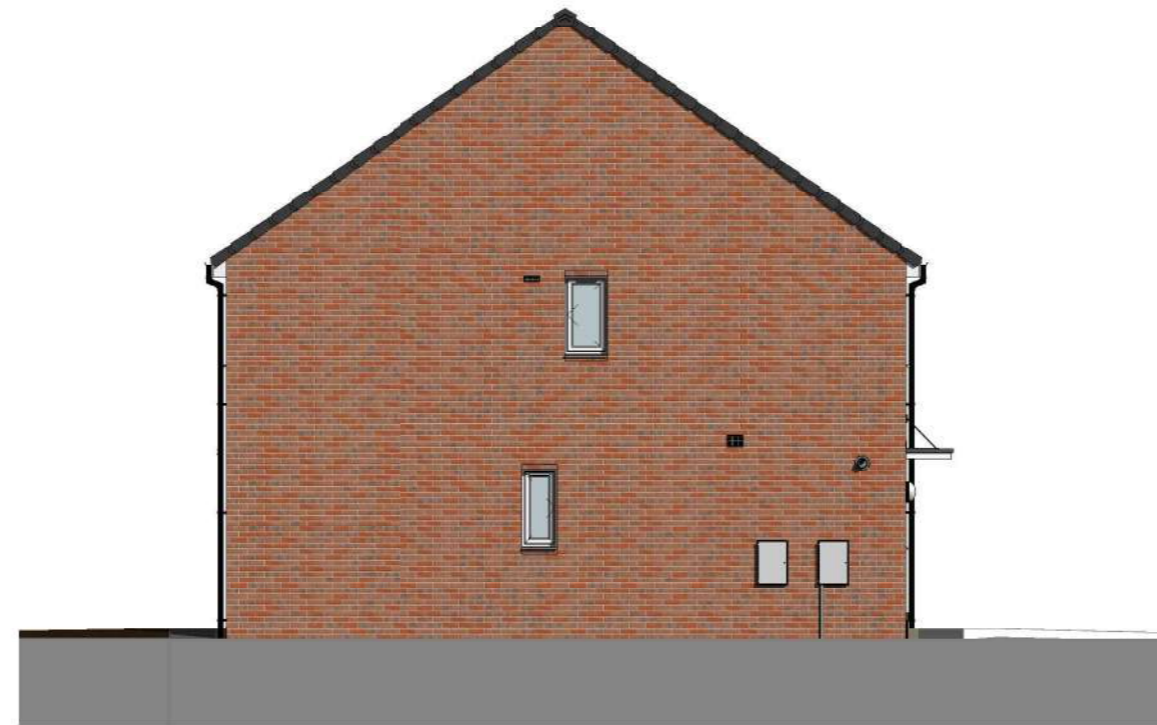
For internal use only  
726.46 ft<sup>2</sup> / 67.49 m<sup>2</sup>

Lawton

2 Bed 4 Person



C=19 R=168  
M=12 G=161  
Y=96 B=29  
K=19



#### House Type Description.

**One of our specially designed Lifetime Homes, the Lawton is a two-bedroom home that gives you much more space than you'd expect.**

The first thing you'll notice in this two-bedroom home is the ease of accessibility. The level, step-free access makes life easy if you have mobility issues, or if you're using a pushchair. And once inside, the wide and airy hallway makes a great impression. The modern kitchen/diner welcomes you into the home and feels spacious thanks to the higher than average ceiling height. The lounge is at the rear of the home, and with a glazed door to the rear garden, is bathed in natural light. There's handy storage and a WC on the ground floor too.

Upstairs, off the wide landing, you'll find two double bedrooms, a stylish bathroom and even more built-in storage.

#### Key Features.

- Two-bedroom semi-detached home
- Specially designed Lifetime Home
- 726 sq. ft. of living space
- Downstairs WC
- Built-in storage on both floors
- Make your home your own with **Keepmoat Options**
- Move in with just a 5% deposit with **Help to Buy**