

4.0 Heritage Statement

4.1 Assessment of Heritage Significance

4.1.1

Assessment of Significance

In England, recent publications by English Heritage, the Heritage Lottery Fund and the Homes and Communities Agency have referred to the concept of “significance”. Significance can be described as the value of a heritage asset to this and future generations. In its widest sense, conservation seeks to preserve the legacy of each generation and with this, an understanding of the values of place and social change.

Cannon Hall Park, as an historic asset, has aesthetic value, historic value, and social and cultural value. Heritage England use the terms as listed below to define significance; these are most relevant to this project as they are focused on the principles and values of conservation:

Aesthetic – Value deriving from the ways in which people draw sensory and intellectual stimulation from a place. This category includes Architectural and Artistic value.

Communal – Value deriving from the meanings of a place for the people who relate to it, or for whom it figures in their collective experience or memory.

Evidential - Value derived from the potential of a place to yield evidence about past human activity.

Historical - Value deriving from the ways in which past people, events and aspects of life can be connected through a place to the present

Significance of Listed buildings and Structures

Cannon Hall is Grade II on the Register of Historic Parks and Gardens, i.e. of special interest, warranting every effort to preserve. This is based on interests such as:

Archaeological – ‘There will be archaeological interest in a heritage asset if it holds, or potentially may hold, evidence of past human activity worthy of expert investigation at some point. Heritage assets with archaeological interest are the primary source of evidence about the substance and evolution of places and of the people and cultures that made them.’

Architectural – ‘Interest in the design and general aesthetics of a place. Arise from the conscious design or fortuitously from the way the heritage asset has evolved’ ‘more specifically architectural interest in the art or science of the design, construction, craftsmanship and decoration of buildings and structures of all types’.

Artistic – ‘artistic interest is an interest in other human creative skill, like sculpture’.

Historic – ‘An interest in past lives and events (including prehistoric). Heritage assets can illustrate or be associated with them. Heritage assets with historic interest not only provide a material record of our nation’s history, but can also provide an emotional meaning for communities derived from their collective experience of a place and can symbolise wider values such as faith and cultural identity.

The site has 13 listings, these are as below, with more detailed individual descriptions available on the HE website. Protection to these features is not automatically afforded as a result of being within the main listing of the park therefore separate listings for each individual feature of interest has been undertaken.

4.1.2 Cannon Hall Forecourt

Aesthetic Low to Negative

The existing layout consists of a tarmac carpark and driveway and an area of grass. There is a large York stone slab edge contributing to the architecture quality and setting to the building.

Communal - Low

There are no designated areas for pedestrian flow or space for visitors to gather within the forecourt. The existing layout shows no resemblance to the historic landscape plans or does it serve any purpose other than an area to park and hold small scale events. The grass space can fit a few marquees on during event days.

Evidential - Medium

The layout evident on the 1760 Woods plan shows a circular driveway allowing access for carriages to wait directly outside the portico entrance. The space can be re configured to create a grand entrance to the hall similar to the original layout.

4.0 Heritage Statement



Historical - Low

4.1.3 South Terrace

Element - Terrace and Ha-Ha

Aesthetic - High

The South terrace is a significant contribution to the structure of the park and the Ha-ha allows views across the site from the hall. Cawthorne village and the lakes can be seen from sitting on the terrace.

Communal- High

The South Terrace has a strong association with the hall and park and is a very popular gathering point for regular and new visitors. A long line of memorial benches can prove that regular visitors to the park have a strong affinity with the terrace and the views it offers.

Evidential - High

The remaining Ha-ha is still functioning as a feature element. The wall needs minor repairs and better signage to describe its historical function

Historical - High

The ha-ha was not only to continue to bring the view across the valley into the garden and keep the deer out, but also to create a more nearly level terrace for the lawn and pleasure grounds.

4.1.3 Stable Wing and courtyard

Element - Courtyard/semi covered cart sheds

Aesthetic - Low to medium

Stable block, enclosed courtyard, cottages and outbuildings comprising the historical service zone of the main house. The courtyard is currently closed off to the public but there is a managed/staff route between the main building and the walled gardens via this space. The cart sheds are unused and empty.

The surface treatments are generally original and are in good condition with features such as stone drain channels intact

Communal - Low to Medium

Historically the courtyard would have been a busy interface serving as a passage for workers transferring food from the walled garden to the house. The communal working character of this space has been lost due to the space being closed off to public.

Evidential - Medium

The character and the original paving remain intact.

By removing the cart sheds the courtyard can be opened up to enhance

the visual and physical connection between the hall and the Walled Garden. After the structure is removed text will be added to the stone footprint as an informative description of the walled garden.

Historical - Low to Medium

Interpretation of the original use could be added in the form of carts and tool displays which are associated with day to day tasks carried out by John Spencer's kitchen staff.

Element - Gardeners cottage_List entry number1287029

Archaeological - Medium

The Cottages feature a range of original and historically inserted features. The north elevation features clamp made brick walls under

Service wing courtyard



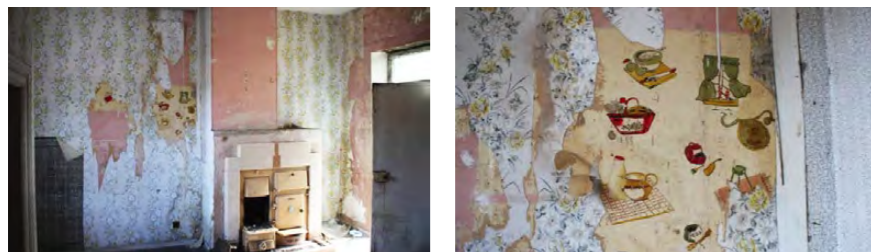
Cart Sheds



a gabled slate roof, with stone and brick chimney stacks. Fenestration consists of similar multi-light Georgian and Victorian vertical sash windows. Doorways feature mounded 4 panelled doors with original fittings. Internally to the rear southern elevation a later ashlar stone offshoot has been added with an elliptical arched cartshed. Inside the cottages, the original layout appears to have largely survived, However both cottages were extensively renovated during the early 20th century and the ground floor fireplaces have all either been blocked and the kitchen ranges replaced with enamelled ones c. 1930s.

A notable feature of one of the ground floor walls were a series of hand painted garden and domestic motives (Plate 3). Some of the original second floor fireplaces remain in situ and are notable by their relatively small grates (Plate 4). In the east range the stable and hayloft/store over also features original features such as the hay racks to the east wall. The first floor was accessed via external stone steps (Plate 5) with arched gateway through from the farmyard to the garden. However the first and second floors were not viewed but now serve as a fruit store for the adjacent garden.

Aesthetic - Medium



Access to Gardeners Cottage



of the house, and it would appear that this range is contemporary with the 1768 remodelling of the main Hall. The Gardeners cottage appears to be of later date, and built as an addition at the turn of the 19th century.

Communal - Medium to High

The gardeners cottage is still in use as a base for the friends. It is situated in a perfect position with views over the gardens and convenient access for visitors entering the walled garden.

Historic - High

The gardeners cottage offers an important historical narrative within the walled garden. A live-in gardener is not a luxury most people today can relate to and so creates a fascinating look into the lives of the Spencer family and the importance of maintaining an impressive garden.

4.1.4 Walled Garden

Element - Pinery/Camellia House



Archaeological - High

The Pinery, a 1760's greenhouse made for growing pineapples, the current aesthetic is probably the result of modifications in the early 1810s, understood to be inspired by classical design and potentially the grand tours undertaken of Europe., (which were grown in the heat caused by fermenting tanner's bark), still exists at the entrance to the Richard Woods kitchen garden. Research work on the building suggests that it originally had glasshouses either side of the present structure, which actually grew the 'pines' or pineapples as we know them and that the central part was used for 'exotics' in the winter and as a banqueting house in the summer. A 'Catalogue of Stove Plants', and a 'Catalogue of Fruit in the Garden at Cannon Hall Park' both dated 1761 survive in the family archives .

This Pinery was a great indication of the aspirations and wealth of John Spencer, and the fact that it was the first building to be created by him once he inherited, shows just how important the cultivation of 'pines' were to the nobility and gentry during the 18th century.

The nature of its roof is a mystery, since 1760 is thought to be too early for it to have had a glass roof and there are no obvious signs of how the original structure worked. Bretton Hall, a neighbouring property (now the Yorkshire Sculpture Park) has a magnificent camellia house built in 1822 and its glass roof is supported on iron brackets, so the Pinery one may have been adapted at a later date.

Aesthetic - High

The Pinery remains an attractive relic within the park, its ornate architectural features make it different unique compared to other structures found in the park.

Communal - High

The Pinery can be viewed from nearly every angle when walking through parkland and has become a strong focal point. It has become a natural resting point for visitors due to its situation at the highest point of the park and offering panoramic views when sat in-front of the structure.

Evidential - High

Historically the Pinery was accessed through the walled garden via an ornate metal gate. Access through this gate has recently been closed off. As a result of this, the Pinery appears to be an isolated feature on the south terrace when in fact it is an important component to the walled garden.

Historic - High

Adding an information board with a plan of how the pinery might have once looked and subtly adding interpretation of ornate pineapple stonework will exhibit the pinery as an important feature within the park

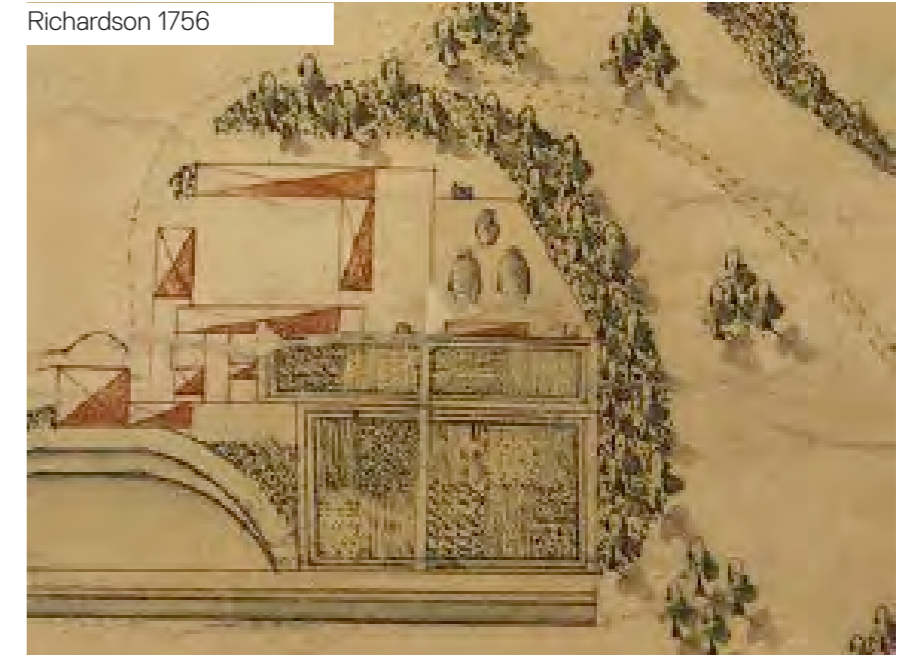
Element -Perimeter Walls/Pears



Archaeological - High

The historical report suggests there was a walled garden at least from 1719. It is known that John Perfect of Pontefract supplied fruit trees to John Spencer II in this year. In 1735 the garden the garden walls might have been extended to allow for an additional large order of fruit trees from John Perfect. Richardson's plans shows the extent of the perimeter wall during 1756.

Richardson 1756



Woods's 1766 improvements display an enlargement of the walled garden with the southern boundary formed by the Pinery. A horse shoe footpath followed the perimeter wall and a network of smaller footpaths joined through the centre of the garden. One of the paths lead to a circular pond west of the slip garden.

Aesthetic - High

The perimeter wall provides an enclosed refuge for people in contrast to the open parkland. Visitors can sit in the walled gardens or walk along the and view the rare pear collection. The walled garden can be accessed through several ornate stone arches designed by Gibbs. Framed views of the parkland can be seen when approaching the arched gates.

4.0 Heritage Statement

Communal - High

The pear tree collection is significantly rare and attracts visitors to regular pear days. During Pear Day the Friends of Cannon Hall will display a collection of Pears for visitors to sample and buy.

Evidential - Low

Historic

The pear collection has an interesting history, from their origin to how they were maintained by the gardeners. Currently each pear tree has its own plant species label, the collection could benefit from larger plaques explaining the heritage of certain rare species. The client team have designated the Plant Heritage Regional Co-ordinator to assess the pear varieties with a view to apply for National collection status.

Element - North Range Glass House



Archeological - Medium

The Northern range glass house is in a dilapidated condition and closed off to public. Within the rear of the building are the remains of the original

heating system. Underground boiler rooms were installed because the heating systems were not pumped and so relied on thermo-cycling (the natural rise of warmer water leaving the boiler and the fall of the cooling water in the return pipe), with drainage/heating channels below floor level and chimneys above. Decorative cast iron gratings or wooden slats covered these channels. Galvanised steel or lined brick tanks were used to harvest rainwater. Housing the tanks inside the glasshouse had the advantage of maintaining the stored water at ambient temperature. This glasshouse is one of three additions to the historic walled garden. The three glasshouses did not form part of the Richard Woods proposals, they were later added to the garden to contain the growing number of exotic fruit trees.

Aesthetic - Low

Later additions and the very poor condition spoil the glass house aesthetics. Improvements will greatly enhance the aesthetics and reveal the heritage.

Communal - Low

Evidential - High

Evidential high due to evidence of earlier structures and the remains of the original heating system.

Information signs and seating will create a romantic ruin for visitors to appreciate. The removal of the glass and minor repairs to the wall will improve the aesthetics of the northern area of the Walled Garden.

Element - borders /Veg Plots



Communal - High

The client team at Cannon Hall regularly organise volunteer days for people to get involved and help maintain and plant up the walled garden borders and veg plots. Historically the veg plots were grown to provide the house with fresh produce. With the provision of a new shop in the walled garden, the friends will be able to sell vegetables to visitors during open days.

4.0 Heritage Statement

Element - Existing Pond



Archaeology - Negative

The existing pond is a recent addition to the Walled Garden built to provide a tranquil area to sit. The pond has been constructed using a style and materiality that is not suited to the character of the walled garden.

Aesthetic - Negative

The pond surround has been constructed using low quality concrete paving flags which have weathered poorly causing the space to look tired and neglected.



Immediately West of the pond is a new brick and timber pergola walkway. The pergola has been constructed using poor quality materials and therefore adds very little aesthetic value to the walled gardens. The pergola is a modern addition built as an ornamental feature and presumably as a design response to the level change.

Communal - Low

The pond seating area is popular amongst visitors as it is solely a water feature.

Evidential - Negative

Historical - Negative

4.1.5 Pleasure grounds

Element - Layout/Plant collection



Archaeology - High

The existing footpaths have been laid out following the same routes as those proposed by Richard Woods. Central to the footpaths are beds of mainly rhododendrons set out informally to create fun secondary routes through the pleasure gardens.

Aesthetic - High

Richard Woods became famous for emphasising the pleasure ground with a more noticeable display of flowers than was typical among the landscape designers of his time. In Spring the Rhododendron collection provide a burst of pink and purple colour.

4.0 Heritage Statement



Communal - Medium

The Rhododendron planting could be seen as the most significant element to the pleasure gardens. During site visits people could be seen sitting within the middle of the pleasure gardens and using the rhododendrons as shelter for picnics.

Evidential - Low

A large majority of the significant Rhododendron species have been covered up by more invasive species. The more significant species need to be uncovered and smaller shrub planting should be planted as a complimentary under-storey. Plant labels could be a way of exposing the significant species of Rhododendrons.

Historical - Medium

The existing paths still resemble the exact layout evident on the as built drawings designed by Richard Woods. The existing clumps of rhododendrons are a later addition to the pleasure gardens and do not relate to the Woodsian serpentine planting beds found on the plans.

4.1.6 Fairyland

Element - Ponds



Archaeological - High



The Woods proposals show a series of ponds starting from the plunge pool at the top and finishing at the larger ponds shown in the parkland.

The existing fairyland consists of two ponds one with water and the other lower pond has become dry due to over grown vegetation. The footpaths have been laid out per the original plans but now remain in poor condition. The footbridge over the ponds outlet has been constructed using concrete paving and a timber rail which has become detrimental to the Pre-Raphaelite style of Fairyland.

Aesthetic - High

Fairyland is a romantic attraction for visitors and poses as an ideal setting for wedding day pictures. Romantic love is a concept which appears continuously and persistently throughout the works of many Pre-Raphaelite painters and poets. The combination of medieval architecture, water and parkland vistas are all associated with the Pre-Raphaelites.

Communal - High

Fairyland has also become a popular area of the park for smaller children who follow route to admire the paintings and interpretation of fairies. The Ha-ha wall wraps around the pond creating a vantage point for people to enjoy views of the park and over to Cawthorne village.

Evidential - medium

Historic plans of Fairyland could be presented to describe the pond as an important remain of what was a series of cascades.

4.0 Heritage Statement

Element - Stone Arches

List entry numbers: a)1151809
b)1191474
c)1314701



Archaeological - High

The Archways are thought to be C16 and sourced from Silkstone and Cawthorne churches and set in fairyland during late C19. The architectural fragments include archways used along the footpath and tracery windows that frame key views points.

Aesthetic - High

The architectural fragments can be seen as romantic ruins which add artistic quality to the park. The majority of the parks character areas conform to the formal Georgian style whereas fairyland is a later positive addition which enhances the 18th century layout.

Evidential - High

The stone fragments could benefit from having a plaque or information sign which illustrates the meaning behind the layout and the origin.

4.1.7 Woodland

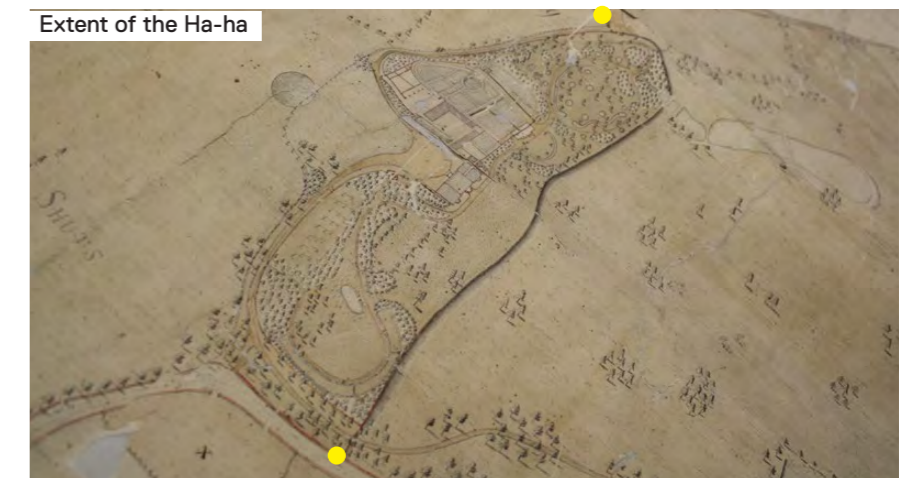
Element - Ha-ha

List Entry number: 1151806



Archaeological - High

Historically the Ha ha formed a continuous feature, starting within the Southern Approach Woodland boundary and finishing within the North Eastern woodland boundary. The wall was built using dry stone walling with an ashlar topping.



4.0 Heritage Statement

Aesthetic - High

The Ha-ha was originally designed to keep livestock controlled within the parkland and separate from the formal lawns which were a place for formal dinner parties. Originally the Ha-ha functioned as a barrier between livestock and which still allowed views over the parkland. Currently the wall remains as a landscape feature and a retaining element and not necessarily a barrier. At present the Ha-ha can be seen as a continuous link that connects the formal lawns to the pleasure gardens and Fairyland.

Communal - Medium

Evidential - High

The extent of the original Ha-ha still exists but some lengths of the wall are hidden within over growth or have broken in places. The existing drystone walling is in poor condition and will need minor repairs and vegetation removing from the joints. The original railing can only be found within both woodland areas, a new timber rail has been installed where the Ha-ha runs through the parkland and terrace.

Historical - High

The basic design of a sunken ditch is of ancient origin. Adding a wall to the ditch was introduced from France into the UK as a deer-leap, which allowed deer to enter the estate but not leave. The name Ha-ha derives from its illusive size. From far away, the top of the wall appears level with the land below, but on approaching the true size of the wall comes as a surprise and may cause the onlooker to say 'ah ah' or ha ha'. The

Ha-ha at Cannon hall is a significantly large and built from stone, minor repairs to the stonework and a short story describing the origins of the feature will create a fascinating attraction out of something that could be easily ignored.

4.1.8 Daking brook Cascades

Element - Cascade Bridge

List entry number: 1314700



Archaeological - High

The proposals put forward by Richard Woods show a palladian bridge designed to carry the drive down the eastern side of the park. The palladian bridge was replaced in the late nineteenth century and slightly relocated.

Aesthetics - medium / Low

The footbridge serves as a primary entrance from Cawthorne village. The existing structure is in poor condition, the railing appears to be a

recent addition and weeds are visible within the joints and cracks. Minor repairs to the stonework and resurfacing the structure will allow the bridge to present itself as a grand entrance to the park.

Communal -High

The bridge is a strong eye catcher from the Hall and can be associated with access to and from Cawthorne.

Evidential - Medium

The remaining original features include the shallow segmental arch and the low coping. The wavy green metal railings have been added at later date. The bridge could benefit from an information sign explaining its original purpose.

Element - middle cascade

Archaeological - High



4.0 Heritage Statement

The 1770 plan shows a footbridge over Daking Brook linking the parkland to the Southern boundary.



The footbridge is built from large slabs of York stone which connect to the cobbled ends of the cascade.

Aesthetic - Medium

The foot bridge is narrow close to the surface of the water. When walking across visitors can achieve uninterrupted views of the lakes due to the fact there is no rail.

Communal - High

During consultation events, local residents explained how they once used the footbridge as a platform to jump into the lakes. The bridge was also popular with people fishing as it allowed them to sit on the edge of the slabs.

Evidential - Medium

The cascade bridge remains in its original position but the connecting footpaths have been lost.

Historical - Medium

The footbridge was an addition shown on the woods proposals to improve access to the southern parkland

4.1.9 Southern Approach and Woodland

Element - Deer Shelter



Deer were introduced to the Park in the 1760s, a shelter was built and a ha-ha created around the main Hall to keep them in the parkland. The present Deer Shelter replaced an earlier version and was built in the early Nineteenth Century. The building is grade II listed and features arched windows, decorative carvings and four massive Yew trunks to support the central bay.

Aesthetic - High

The Deer Shelter displays interesting and unique architectural features, such as the four yew trunks that support the slate roof



Each end bay is gabled and has a 2-light pointed-arched window with Y-tracery. At the key and each impost is a crude mask.



Communal - High

The Deer Shelter is currently used to hold events such as open air concerts and willow animal crafting.

4.0 Heritage Statement

Evidential - Medium

There is a small information sign with an image showing willow deer in a field. This alone may not be enough evidence for visitors to understand the historical purpose of the shelter.

Historical - Medium

The shelter was built a while after the park had deer introduced. The shelter first appears on a map dated 1839.



Element - The Midden

Archaeological - Medium to High



The Midden is located in the woodland approach immediately west of the forecourt. The back of the structure is built into the earth and the front consists of rubble stone walling and a stone roof. The midden can be accessed using an ornate metal gate.

Aesthetic - Medium to high

The architecture of the Midden contributes greatly to the historic character of the park. Its situation within the woodland creates a sense of adventure and stumbling upon a lost relic.

Communal - Low

Lack of access and prominence.

Evidential- High

The materials are the original and can be referenced from the measured works of John Marsden in 1760. The Existing midden interior is still accessible yet closed off to public. Historically the Midden would have been situated in woodland next to the forecourt to ensure easy access and screening from the halls entrance.

Element - Ice house

Archaeological - High



The Ice House is suggested to be 18th century and forms part of the extensive landscape project formed by John Spencer in 1760. In July 2015 access was created in the blocked brick doorway and access into the house was made. The external ashlar entrance way had been bricked up sometime during the mid C20th and the lintel re positioned

4.0 Heritage Statement

and the roof repaired. The Ice House consisted of two elements the outer entrance passage and the domed cylinder of the Ice House. The entrance passage measured approximately 3m x 1.1m and was 1.9m high. The floor featured worn imbricate flagstones. The first entrance thresh was obscured by modern brick wall the inner doorway featured a heavily work stone thresh.

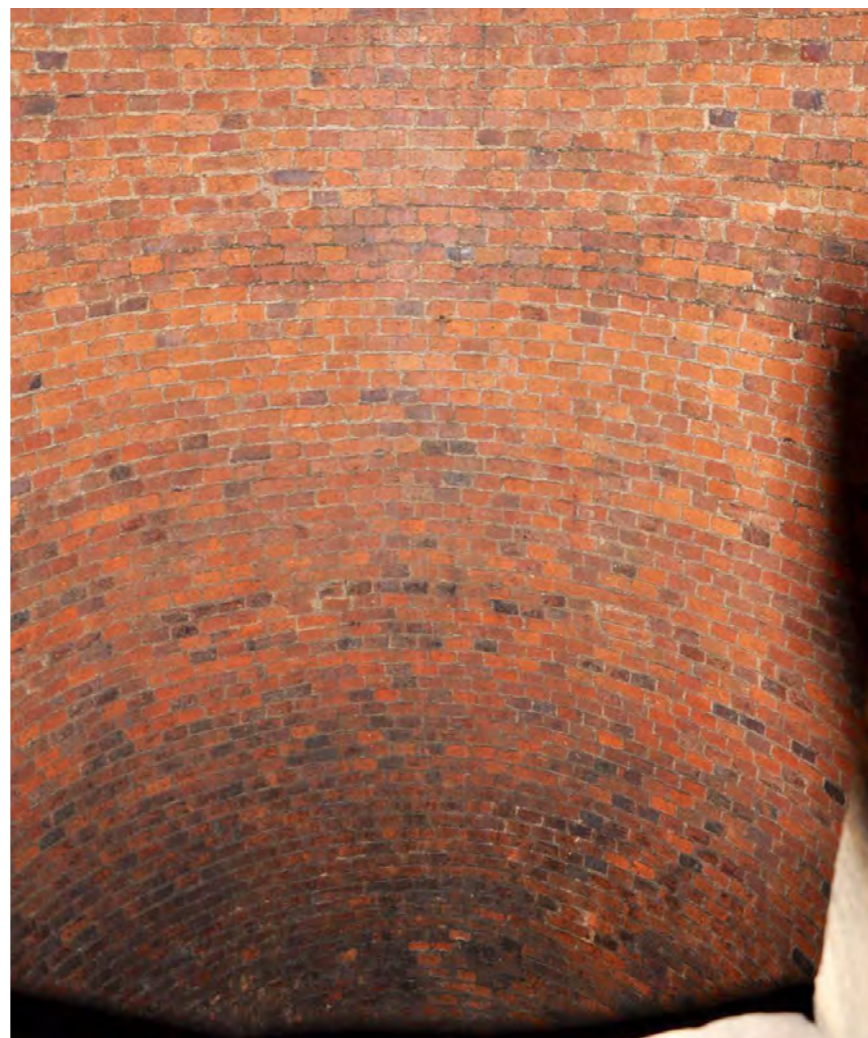
The cylindrical ice shaft extended approximately 20' and featured reddish orange bricks in English Garden bond. The doom apex featured concentric rows of end on brickwork. The floor was covered in debris so the exact layout even depth could not be ascertained.



Evidential - High

The Ice house is in very good condition with only the need of a few minor repairs. The exterior needs improvements to the access routes and repairs to the Ice House roof. Once the footpath has been resurfaced and a rail installed to the roof, visitors will be able to stand by the entrance and peer inside. Originally the ice house was built there for maximum

shade. The tree that shadow the Ice House is the largest in the park.



Historic - High

This included the creation of the associated banked woodland, where the Ice House is currently located. Ice houses were a high status item and in South Yorkshire there are similar examples at Wentworth Woodhouse and Wentworth Castle.

4.0 Heritage Statement

4.2 Assessment of Impact

Communal -Low

The Ice House is hidden by overgrown vegetation and a lack of proper access.

4.0 Heritage Statement

4.2 Assessment of Impact

4.2.1 Summary

Impacts are considered to the principle development proposals as follows:

- 1-Museum Forecourt/parking
- 2-Demolition of lean to buildings in courtyard/access to Walled Garden
- 3-Renovation of Gardeners Cottage
- 4-Entrance to walled garden via arched building
- 5-Walled Garden improvements-including reinstatement of Georgian pond, the re-configuration of north range greenhouse.
- 6-Ice House access
- 7-Midden access and repairs
- 8-Improved access and repairs to Deer Shelter
- 9-Fairyland path improvements
- 10-Lakes and wider park improvements

4.2.2 Museum Forecourt/parking

(Ref Drawing CHP_PLI_S2_DR_LC1_0220)

The proposals relate to a separate package of work being developed by the Council to improve the Museum entrance. To enhance the pedestrian approach and arrival at the museum entrance the opportunity (as described in section 3.2) is to consolidate the underused parking area into a single row of six disabled parking bays accessed from a new access from the main drive. The impact on the setting to the museum will therefore be to create a positive public space from a parking area.

Use of natural stone ties into the museum surround. The bays will be surfaced in pre-grown reinforced grass.

Screening will be applied around the parking area in the form of grass mounding and meadow planting.

Impact:

Natural screening



Existing building trim



4.0 Heritage Statement

4.2 Assessment of Impact

Relocation of existing parking

The proposals are for six disabled parking bays to be provided and situated to the western boundary of the forecourt. The bays will be surfaced in pre-grown reinforced grass. Screening will be applied around the parking area in the form of grass mounding and meadow planting.

Natural screening

This will create a naturalised entrance for visitors entering and exiting along the pedestrian route. The provision of two separate entrances to the forecourt will create a clear separation between pedestrian and vehicular flow. The provision of two entrance points will allow delivery drivers to park as close as possible to the museum doors, the delivery driver will be able to enter and exit the forecourt in one manoeuvre.

Feature walls

The grass mounding will be retained using feature walls that curve to levels of the mounding (ref CHP_PLI_S2_DR_SW3_0804).

The walls will gradually rise in level until the central point at a maximum height of 800mm, people will be able to sit comfortably at points with height of 400-500mm. Interpretation and extracts from Cannon Halls history will be carved into the face of the wall.

Central paved space

The grass mounding and feature walling will wrap around a central

The proposed work will not effect any original features within or surrounding the forecourt. The proposed layout will be more in line with the historic carriage circle and emphasis the museum as a key feature rather than a space to park cars.

The proposed yorkstone paving will enhance the museum the Georgian character of the museum and Spencer Wing. The stone has been selected to match the existing sandstone trim that surrounds the museum. The pedestrian access path will be surfaced in a honey coloured resin bound gravel to form a subtle and more naturalised palette of colours.

Improved surface to the frontage

The existing tarmac is in poor condition and will be replaced with rustic Yorkstone paving that will be in keeping with the museums character.

Current Issues

The existing bays sit directly in front of the museum, this not only obstructs views to the architecture but also creates a hazard for visitors entering and exiting the building. Currently there is no separation between pedestrian and vehicle traffic.

Impact

The changes to the forecourt will be visible from Bark house Lane, by people approaching from the park south of the forecourt and people within the museum looking out to the forecourt. They improve the Hall/ museum setting.

4.2.2 Access from Hall through the Service Wing Courtyard Planning Context: Planning and Listed Building Consent

(Ref BHN report)



The proposals are to demolish the cart sheds between the Hall service courtyard and Walled Garden are to remove the cart sheds. This will open up access between the kitchen yard and service wing courtyard and enhance the visual connection between the museum and the walled garden. Currently the courtyard is closed off to public and completely disused.

Impact

Currently people who want to visit the walled garden from the museum will have to exit the museum walk around the forecourt and enter through

the stable yard. The removal of this section of wall will have a positive impact on the visitor experience by creating a continual route through the museum and provision for new DDA access between the courtyard and kitchen garden. Whilst it is accepted that the changes will have a moderately harmful impact upon the current configuration it is noted that the structures for removal are of a more recent intervention that have in themselves had a more harmful impact by losing the connection between the kitchens and the productive garden areas of the walled gardens. The changes will greatly increase the level of intellectual understanding of the importance that the walled gardens played in the day-to-day life of the Hall and re-creates a configuration closer to that drawn by Woods.



4.2.4

The gable end of the building to the south will be repaired to close off the roof space, as described within the architects proposals.

4.2.3 Renovation of Gardeners Cottage

The Friends of Cannon Hall Park use the cottage as a base for volunteer and garden maintenance activities.

During a site visit with Historic England options for the improvement to the views to and from the building to the courtyard area of the walled garden were discussed.

HE suggested the south elevation of the cottage could be re-configured to relocate the existing door with direct access to the front room, and a window to improve views.

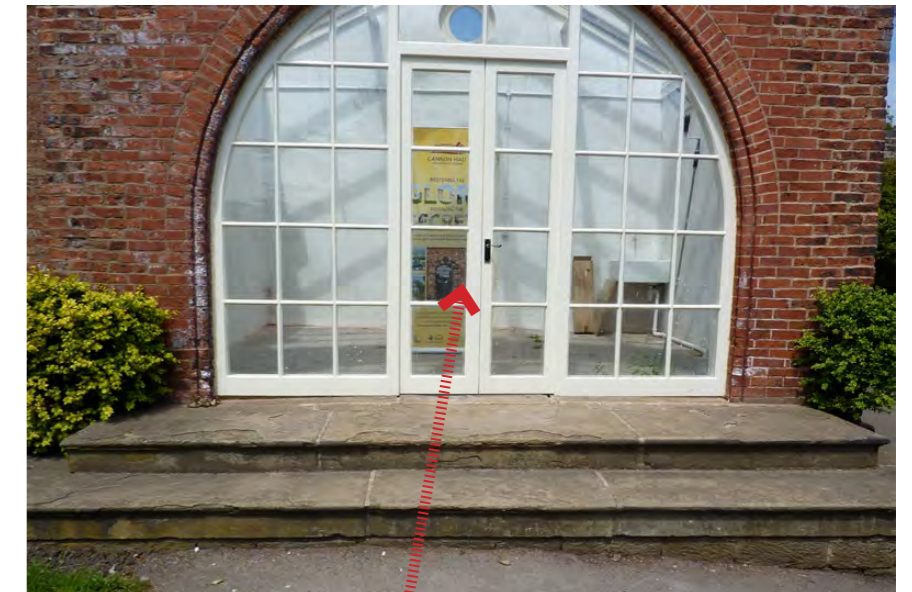
New entrance to walled garden via arched building

This relates to works to the Gardeners Cottage and the re-configuration of the space and linking between the service courtyard and walled garden. Improvements to provide fully accessible routes to both the arched entrance (opposite) and the

Impact

The introduction of a dedicated garden entrance will allow improved visitor experience. Dedicated sheltered space can be used by volunteers to communicate any activities within the garden or features of interest to the general public. It also improves on the existing access point.

Refer to BHN proposals for detail works to the arched building



View of existing building showing proposed entrance to garden. Existing steps to be reconfigured to provide a level access suitable for wheelchair users connecting with the wider park path network.

4.2.5 Walled Garden improvements including reinstatement of the Georgian pond.

The restoration of the Georgian pond will include the removal of the existing rectangular pond and the introduction of a layout more in keeping with the original intent from the Richard Woods proposals.

The area where the existing pond is to be removed will be re-configured as a level lawn space that will allow flexibility for events (such as outdoor workshops i.e. theatre productions and historical demonstrations. These proposals are being developed in conjunction with the Activity Plan which is being prepared as part of the stage 2 submission.

Impact

The new spaces makes better use of the Walled Garden for future activities and is more in keeping with the intention of the original proposal 4.2.5

Artists Impression of proposed pond



4.2.6 Re configuration of North Range Greenhouse

The north range glass house will be reconfigured as a seating space with historic interpretation signage. For safety reasons, the glass frame structure will be dismantled, but the north brick structure will be retained and repaired.

The two glasshouse ‘bookends’ will be replaced with planting beds constructed using a brick matching the historic wall. These will be planted with scented and hardy shrub planting.

The central part of the greenhouse structure will be paved and furnished with simple benches to provide a quiet, contemplative setting for visitors sitting between the beds and views back to the rest of the garden.

Impact Only new bricks will be removed from the structure leaving



the original brick work intact to form the planting beds. The works will have minimal impact to the heritage of the walled garden. Repairs and interpretation to the glasshouse will increase the structures contribution to the Walled Garden heritage.

6-Ice House access

Impact

The new access will provide a significant opportunity to access a historic structure not separately listed. Ice house structures of this type are becoming increasingly rare nationally and the proposals to repair and open up the entrance to the structure as well as improve access and interpretation in a low key way are positive.

7-7-Midden access and repairs

Impact

Improved access and prominence within the Hall setting. A black, powder coated estate railing will be installed to the roof of the structure to prevent people falling. The estate style railing will have minimal impact of the heritage of this structure.

8-Improved access and repairs to Deer Shelter

Impact: Improved access will allow potential use of the deer shelter by a greater number of people including wheel chair users.

9-Fairyland path improvements

The clearance of vegetation and improved path access, re-surfacing and bridge repairs are proposed, as well as new planting, minor re-grading and landscape works.

Minor repairs to stone arches

Impact

Appreciation of the character of space by improving physical access and the setting to the pond (e.g. bridge repairs).

Repairs to the listed structures as incidents in the landscape and as 'frames' to views of the wider landscape. The repairs to the stonework will preserve the life of the listed structures.

10 Wider park improvements

The wider park improvements include:

- Repair to historic structures such as the ha-ha including vegetation clearance to reveal more of the original structure
- Improved path network including formalising current circuits around the wider parkland
- Improved drainage to the wider parkland
- The removal of self set trees to the cascades complex
- Dredging of the lakes
- Improved biodiversity via the delivery of the 10 yr MMP
- Clearance of dominant under-storey vegetation such as invasive rhododendrons and the
- Site wide upgrade of furniture, including seating
- Site wide way finding and interpretation strategy

Impact

Improved access around the entire park. Prominent footpaths to follow will create a better sense of journey and a greater appreciation of historical features. Secrets revealed, for example greater structure of the ha-ha, views to the original cascade structures.

SUMMARY

The proposals put forward within the design, access and Heritage statement set out the intentions for the development of the park and approval of these will allow the progression of the Stage 2 HLF funding application.

The restoration of the park and revealing its secrets for the wider public benefit represents a once in a generation opportunity to ensure that the park can continue as a cherished and accessible public asset, as it has since 1957.

The proposals have been developed through public consultation and regular meetings with the steering group including councillors, parish councillors, cannon hall farm rep, local residents and volunteers. All of the team are fully committed and excited about the potential of the proposals and are keen to progress the scheme accordingly.

