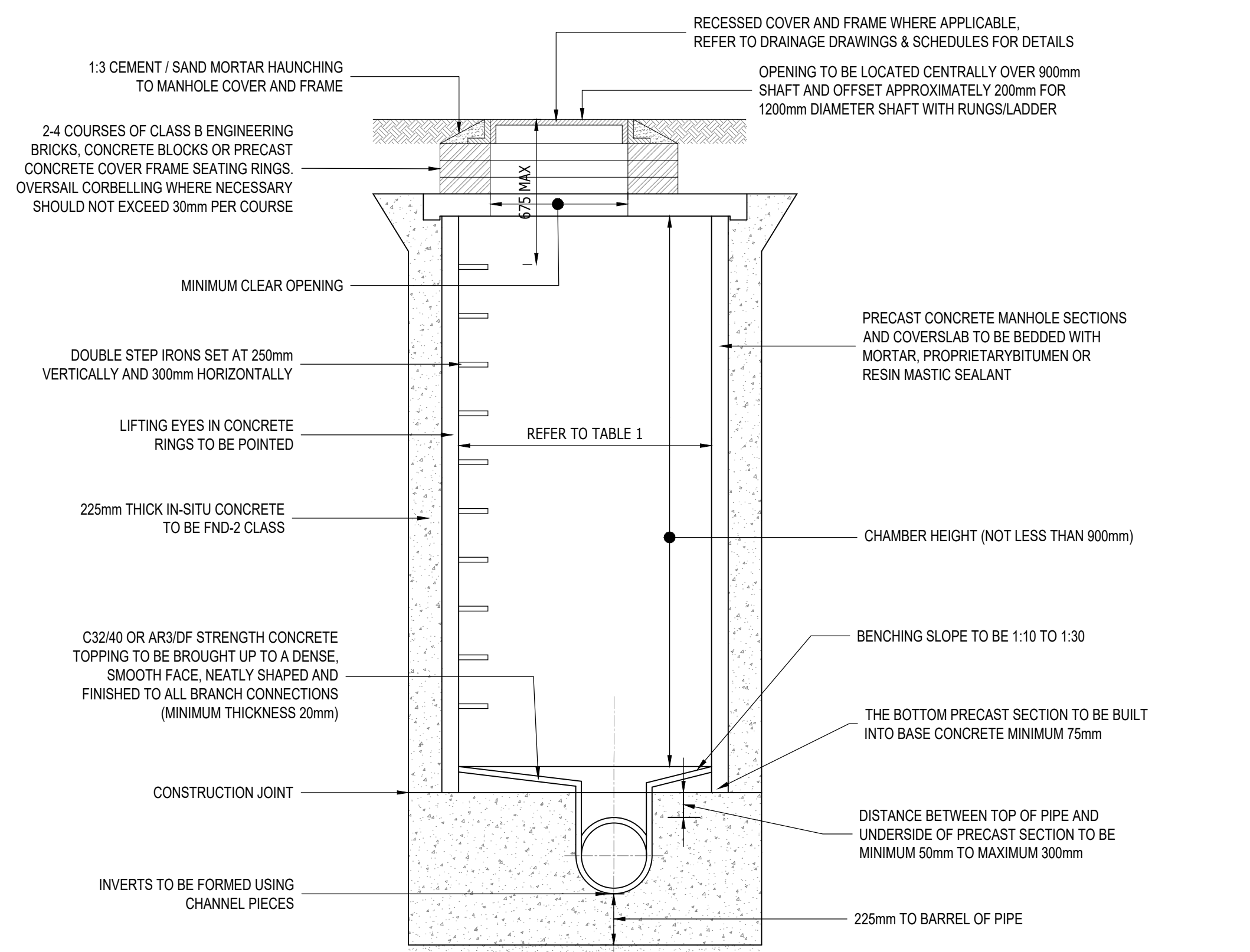
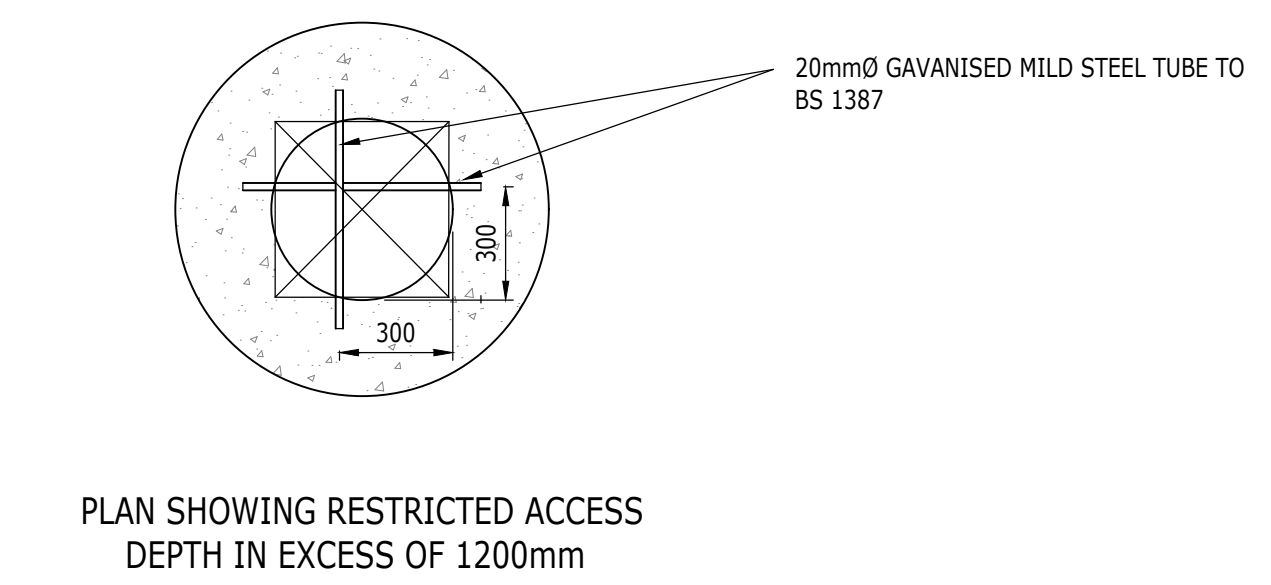
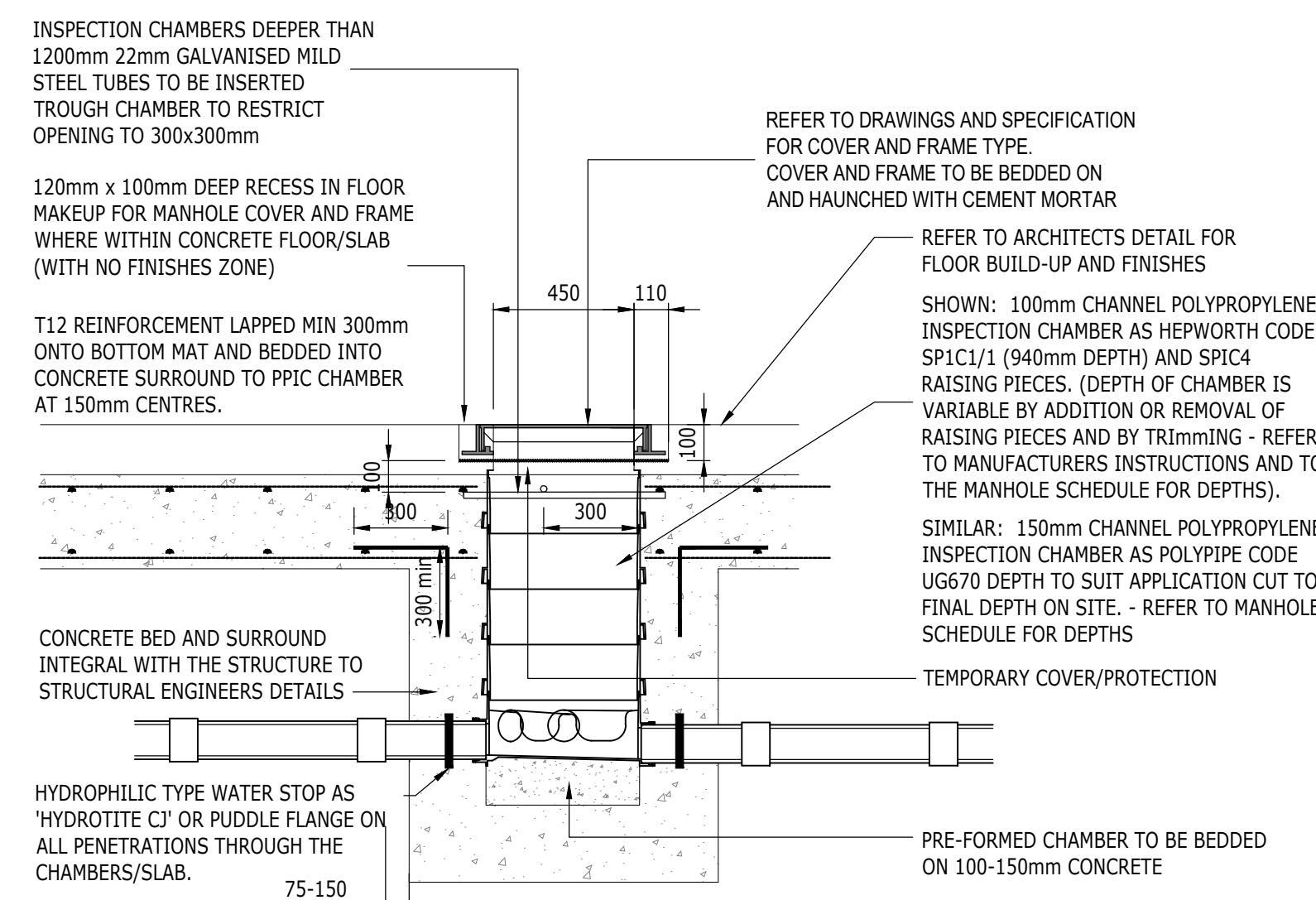
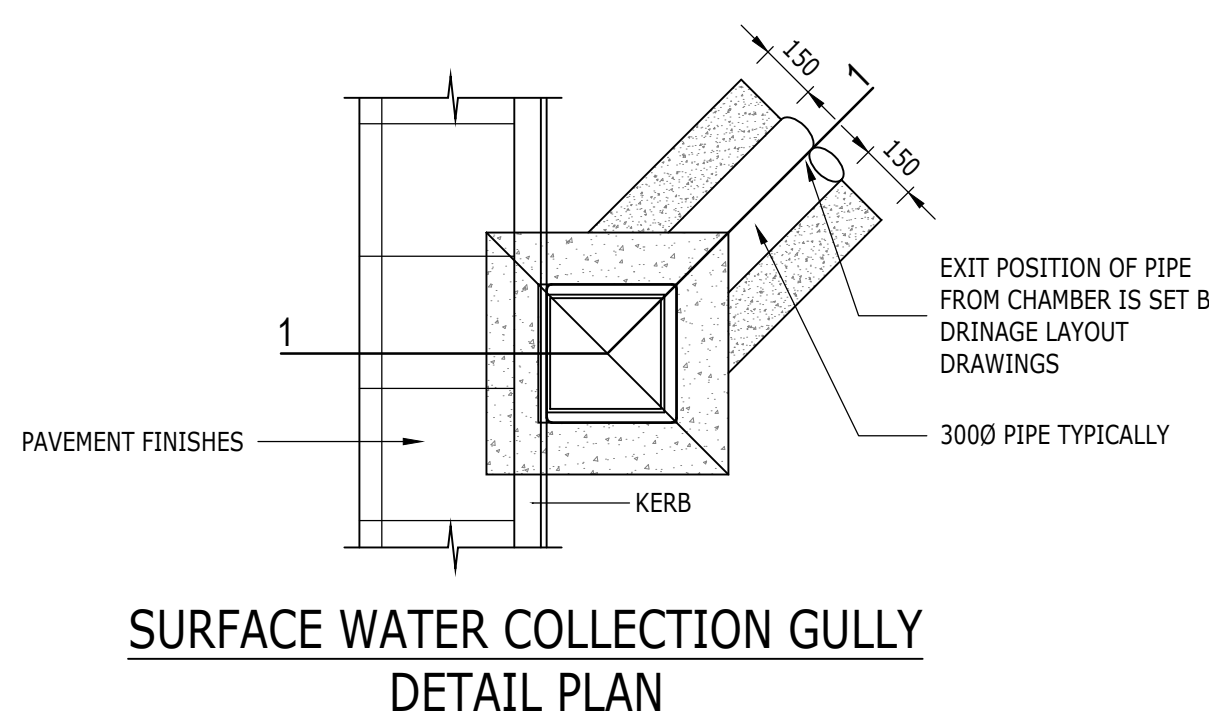
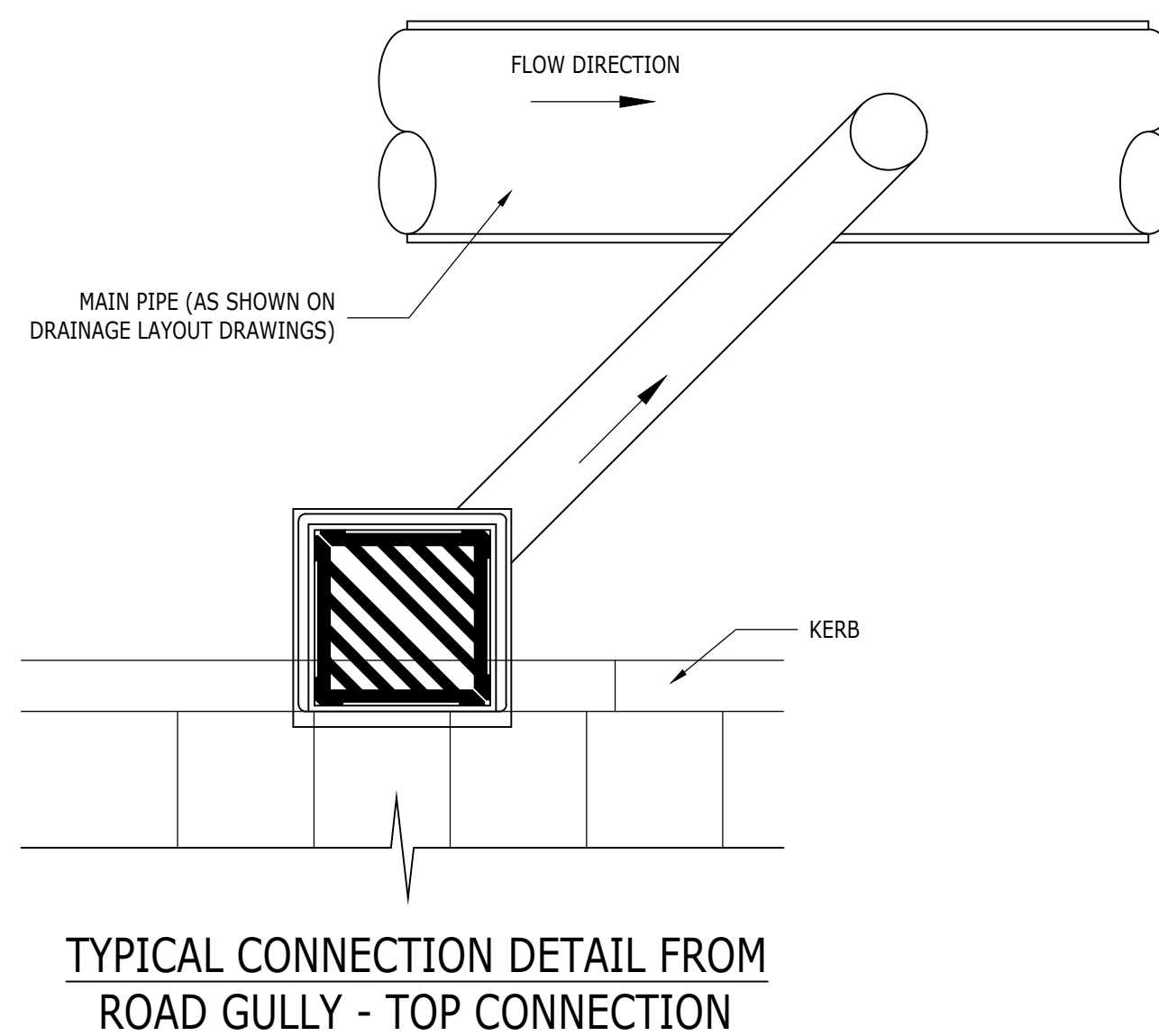


Notes

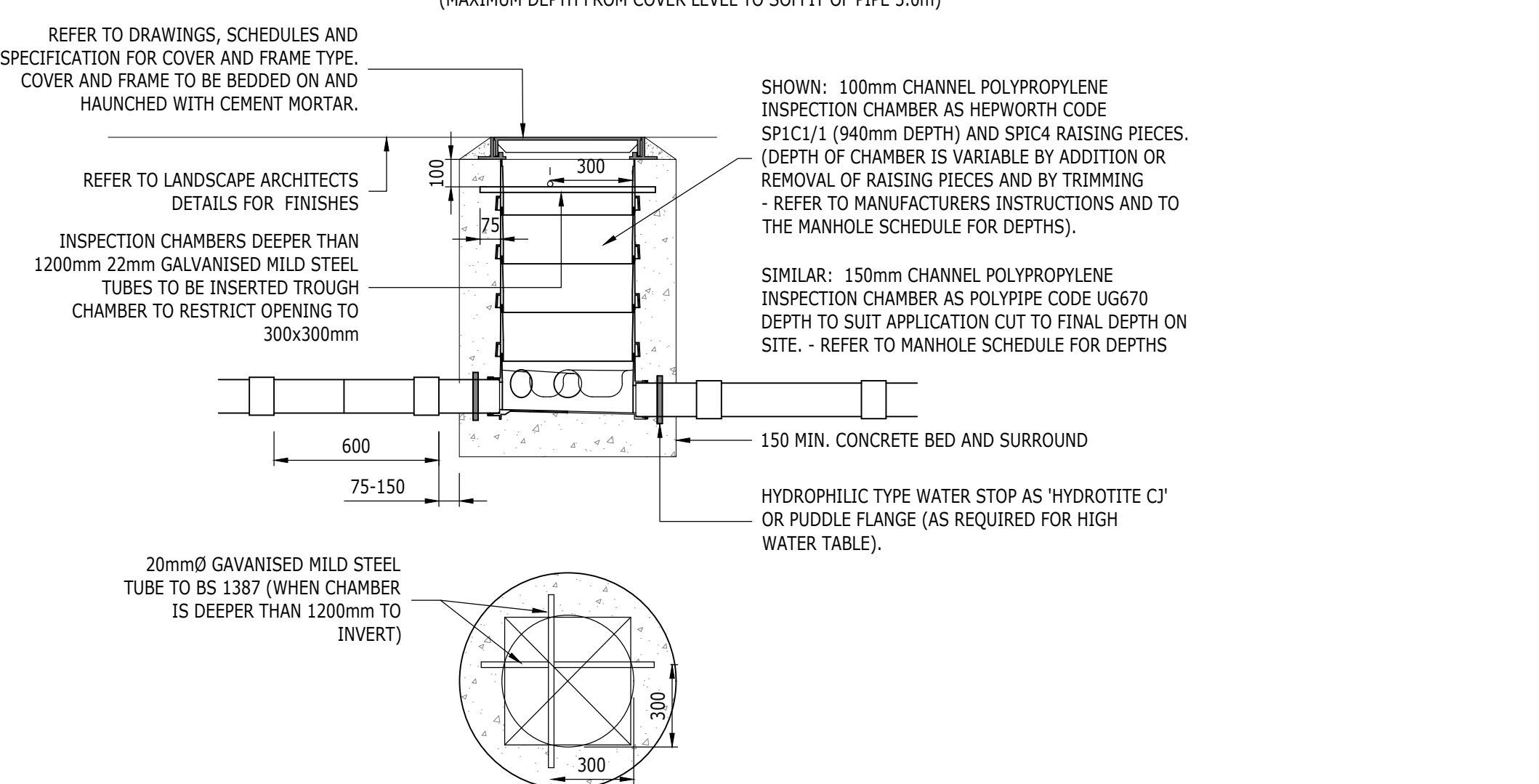
1. THIS DRAWING IS NOT TO BE SCALED.
2. THIS DRAWING IS TO BE READ IN CONJUNCTION WITH ALL RELEVANT ARCHITECTURAL, STRUCTURAL AND M&E DRAWINGS.
3. THIS IS NOT AN INSTALLATION DRAWING NOR A CO-ORDINATION DRAWING.
4. REFER TO RAMBOLL DRAWING BAR-RAM-ZZ-XX-DR-CD-001100 FOR THE DRAINAGE LAYOUT.
5. THE DESIGN AND CONSTRUCTION OF MANHOLES WILL NEED TO COMPLY WITH THE RELEVANT UNDERTAKER'S SAFETY POLICY.



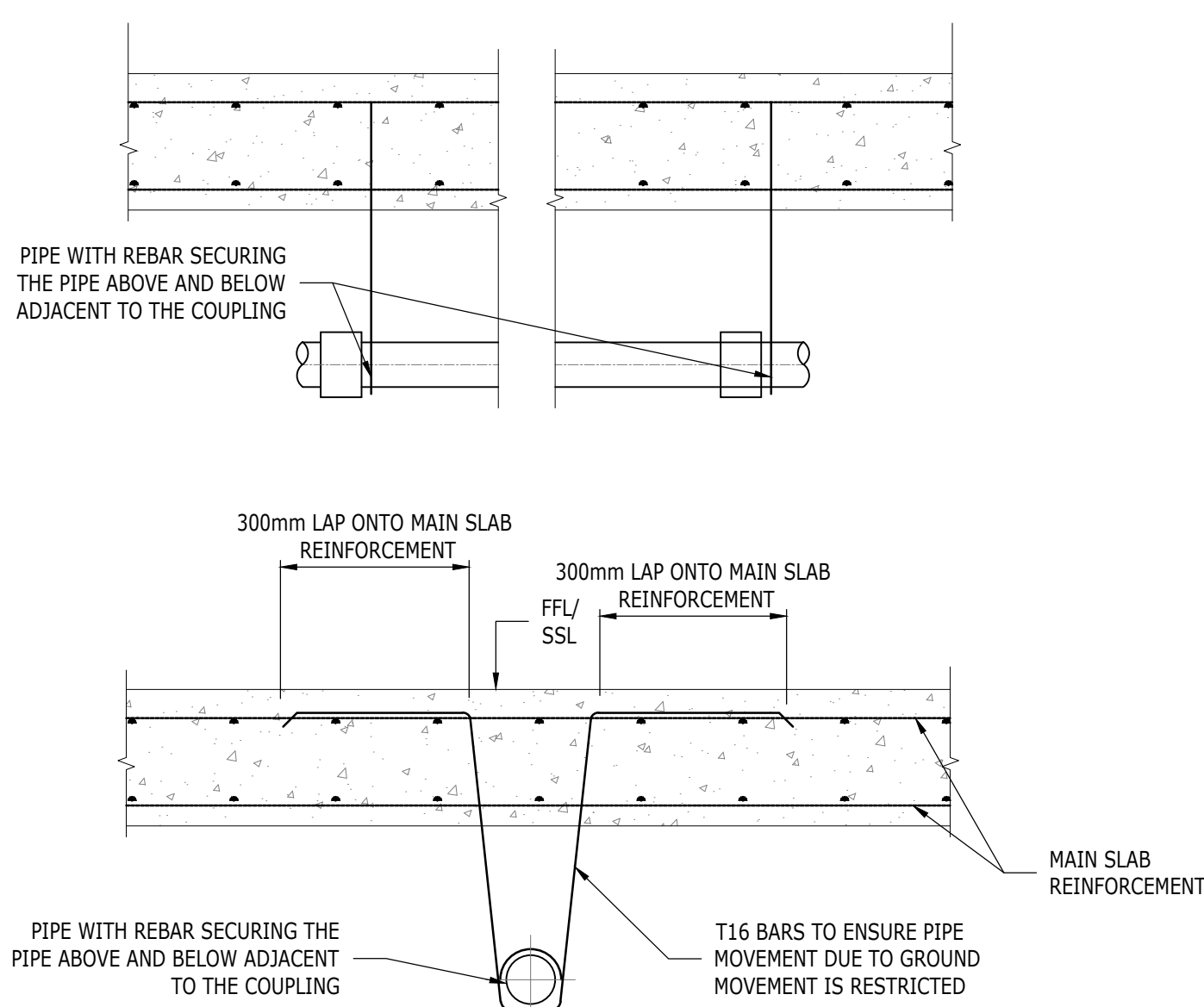
DIAMETER OF LARGEST PIPE IN MANHOLE	INTERNAL DIAMETER OF MANHOLE
LESS THAN 375	1200
375 - 700	1500
750 - 900	1800



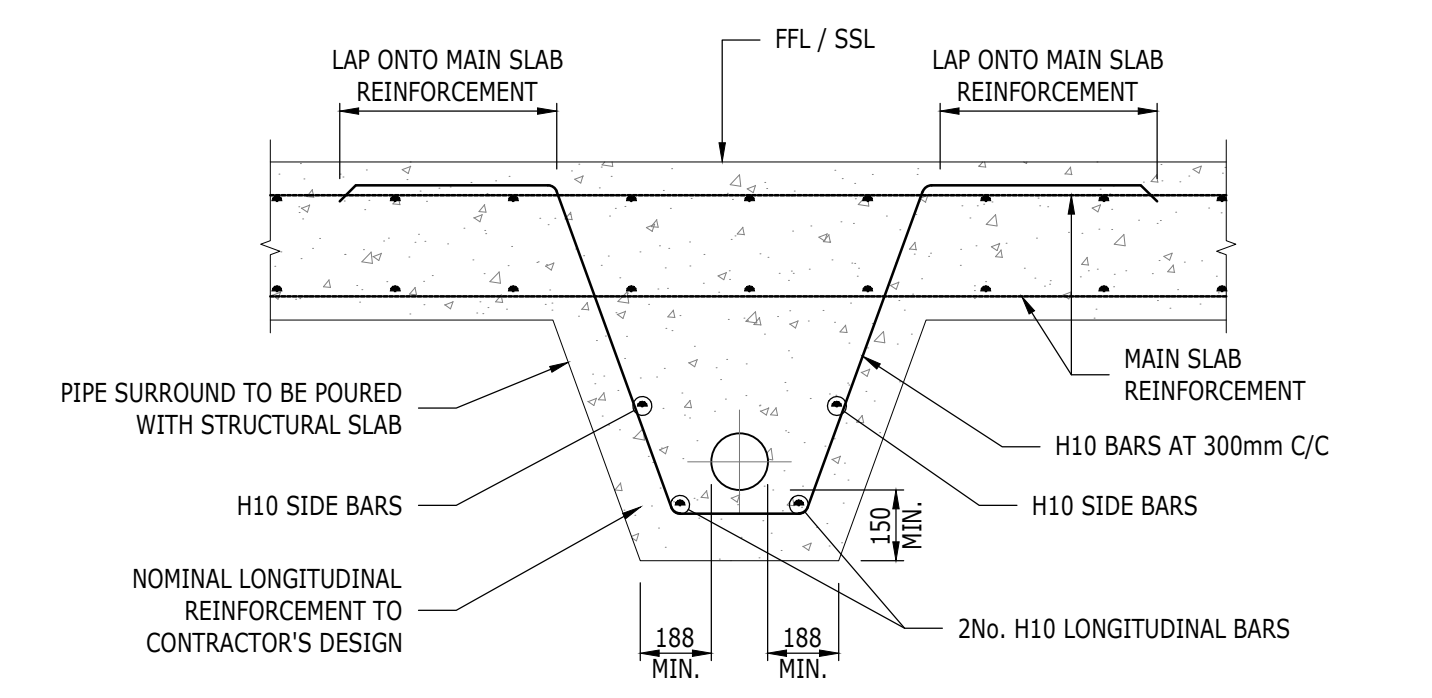
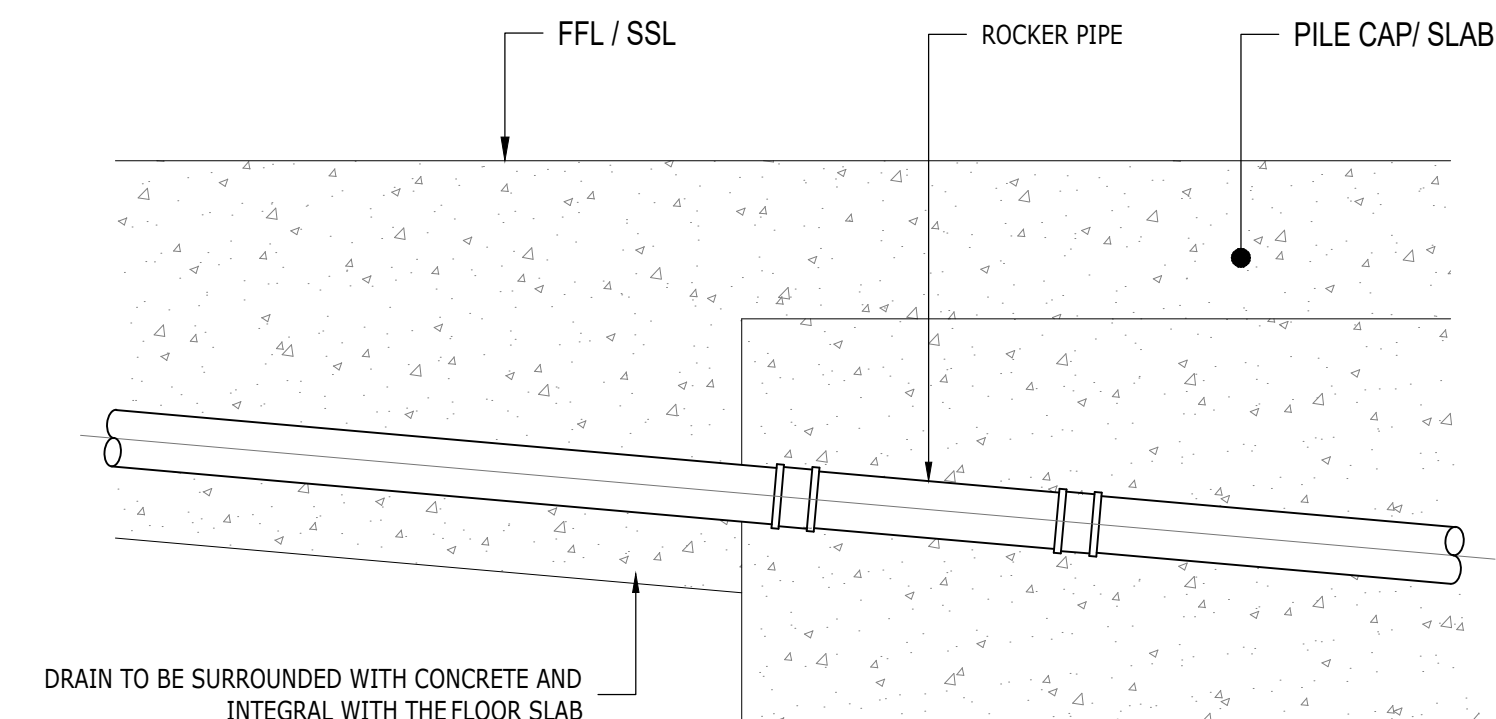
TYPICAL MANHOLE - TYPE 2  
(MAXIMUM DEPTH FROM COVER LEVEL TO SOFFIT OF PIPE 3.0m)



POLYPROPYLENE INSPECTION CHAMBERS EXTERNAL LOCATION  
PLAN SHOWING RESTRICTED ACCESS DEPTH IN EXCESS OF 1200mm



SECURING REBAR TO PREVENT PIPE DEFLECTION OR HEAVE WHERE THE PIPE IS LAID UNDER THE BASEMENT SLAB (WHERE NO CONCRETE SURROUND IS PROVIDED)



TYPICAL CLASS Y CONCRETE SURROUND WITHIN 300mm TO CROWN OF PIPE FROM FLOOR SLAB & UP TO 600mm

T2	ISSUED FOR TENDER	10.03 2023	EA	NH
T1	ISSUED FOR TENDER	19.02 2023	EA	NH
Rev	Description	Date	By	App

TENDER

ONSIDE - BARNSELY YOUTH ZONE



PROPOSED DRAINAGE DETAILS SHEET 2

Project No:	Scale (B1):	Drawn:	Date:
1620014415-004	NTS	EA	FEB 2023
Drawing No:	Rev:		
BAR-RAM-ZZ-XX-DR-CD-00401	T2		