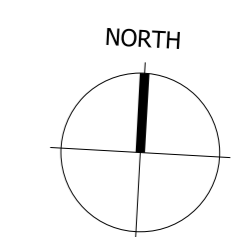
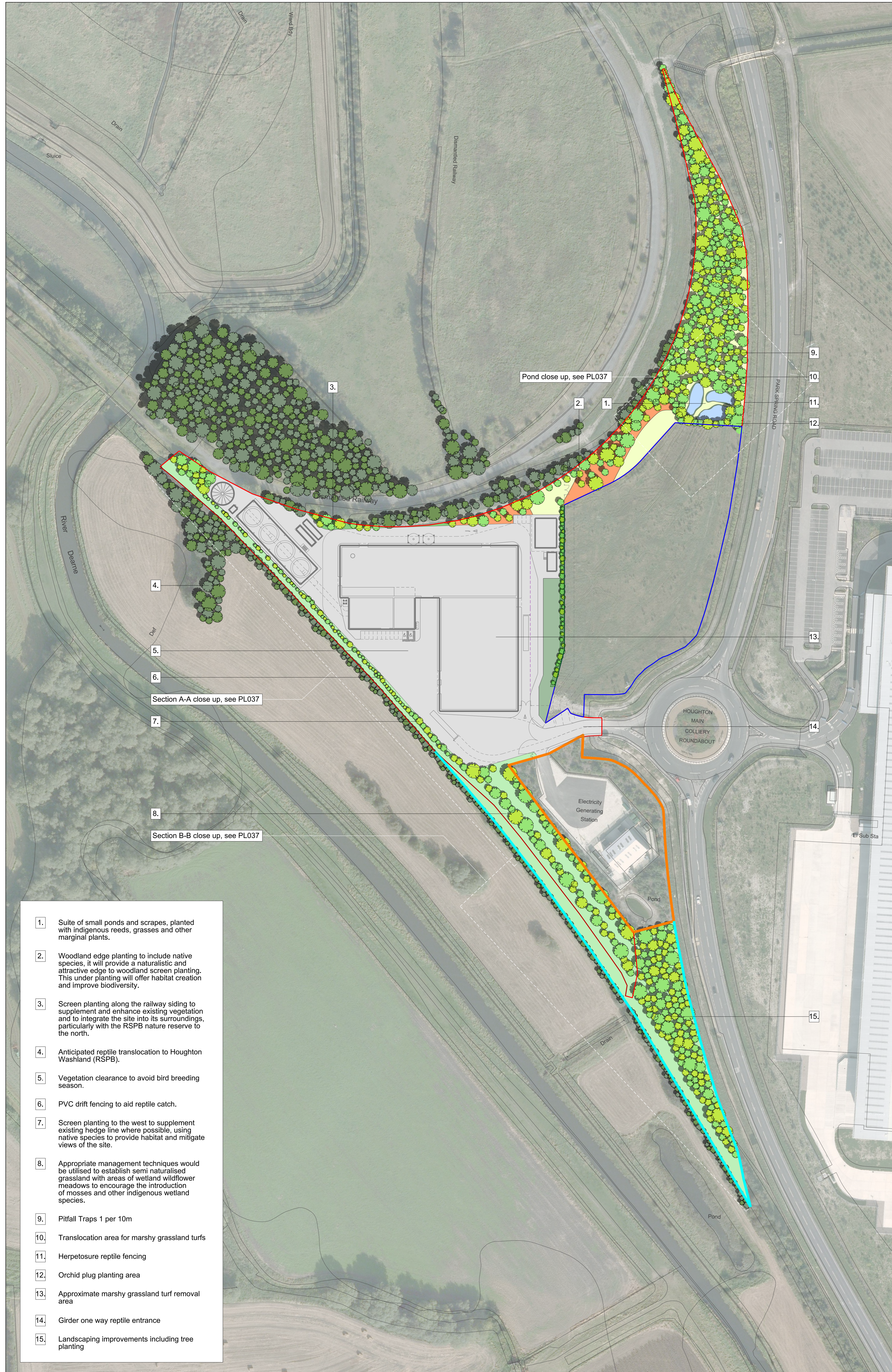


- NOTE
1. THIS DRAWING IS COPYRIGHT GSDA LTD.
 2. THE CONTRACTOR MUST NOT SCALE FROM THE DRAWING ALL DIMENSIONS TO BE TAKEN FROM DIMENSION STRINGS.
 3. WHERE ANY DISCREPANCIES ARE FOUND BETWEEN DIMENSIONS, THESE MUST BE BROUGHT TO THE ATTENTION OF THE ARCHITECTS FOR RESOLUTION.
 4. WHERE DISCREPANCIES EXIST BETWEEN REFERENCE OR ASSEMBLY DRAWINGS & DETAIL DRAWINGS, THE LATTER TAKE PREFFERENCE.



- KEY
- Site Boundary
 - Adjacent Site
 - Alkane Lease Boundary
 - Harworth Residual Land
 - 2.5m wide hedge/ tree line perimeter
 - Existing Vegetation
 - Proposed Woodland / Shrub Planting
 - Proposed Woodland Edge Planting
 - Grassland
 - Grass and Shrubs Infilled
 - Ponds and Marginal Planting
 - Landscaped Green Corridor



1. Suite of small ponds and scrapes, planted with indigenous reeds, grasses and other marginal plants.
2. Woodland edge planting to include native species, it will provide a naturalistic and attractive edge to woodland screen planting. This under planting will offer habitat creation and improve biodiversity.
3. Screen planting along the railway siding to supplement and enhance existing vegetation and to integrate the site into its surroundings, particularly with the RSPB nature reserve to the north.
4. Anticipated reptile translocation to Houghton Washland (RSPB).
5. Vegetation clearance to avoid bird breeding season.
6. PVC drift fencing to aid reptile catch.
7. Screen planting to the west to supplement existing hedge line where possible, using native species to provide habitat and mitigate views of the site.
8. Appropriate management techniques would be utilised to establish semi naturalised grassland with areas of wetland wildflower meadows to encourage the introduction of mosses and other indigenous wetland species.
9. Pitfall Traps 1 per 10m
10. Translocation area for marshy grassland turfs
11. Herpetosure reptile fencing
12. Orchid plug planting area
13. Approximate marshy grassland turf removal area
14. Girder one way reptile entrance
15. Landscaping improvements including tree planting

- 9.
- 10.
- 11.
- 12.
- 13.
- 14.
- 15.

Section A-A close up, see PL037

Section B-B close up, see PL037

Pond close up, see PL037

A	150130	Issued for planning
-	150123	Issued for planning

FOR PLANNING

GSDA
Highlands House, Office 101A, 165 The Broadway, Wimbledon, London, SW19 1NE
 T: 020 8544 8085

HOUGHTON MAIN REC

PROJECT

Landscaping Masterplan

DRAWING
 1:1000@A1 150130
 1:2000@A3 DATE

1313_PL036	A	GS
DWG. NO.	REVISION	CHECKED