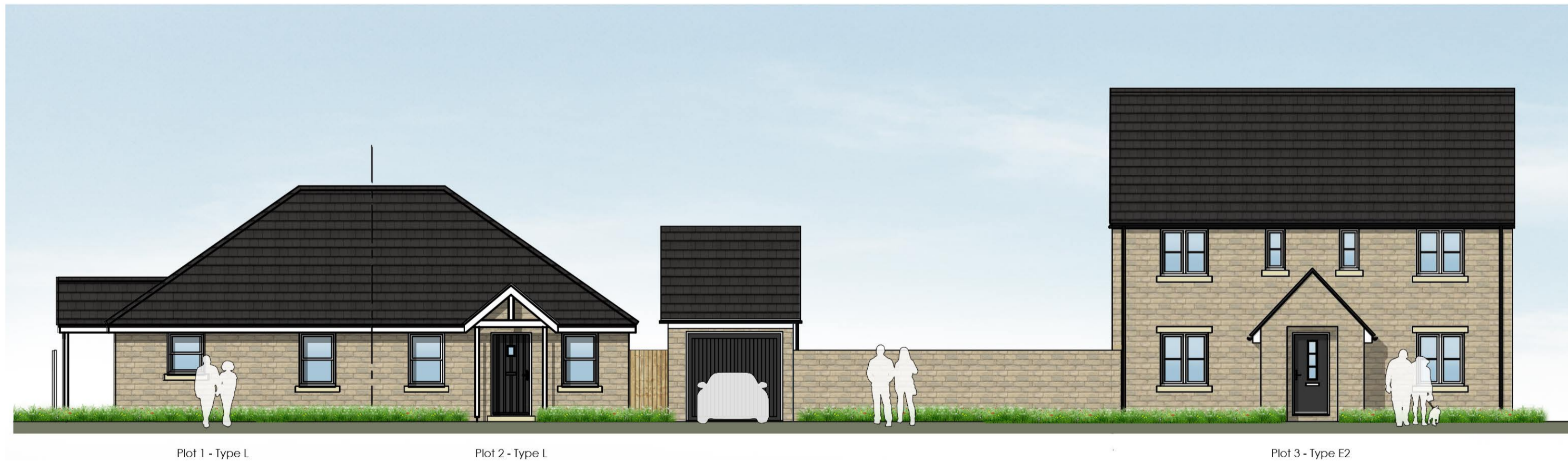
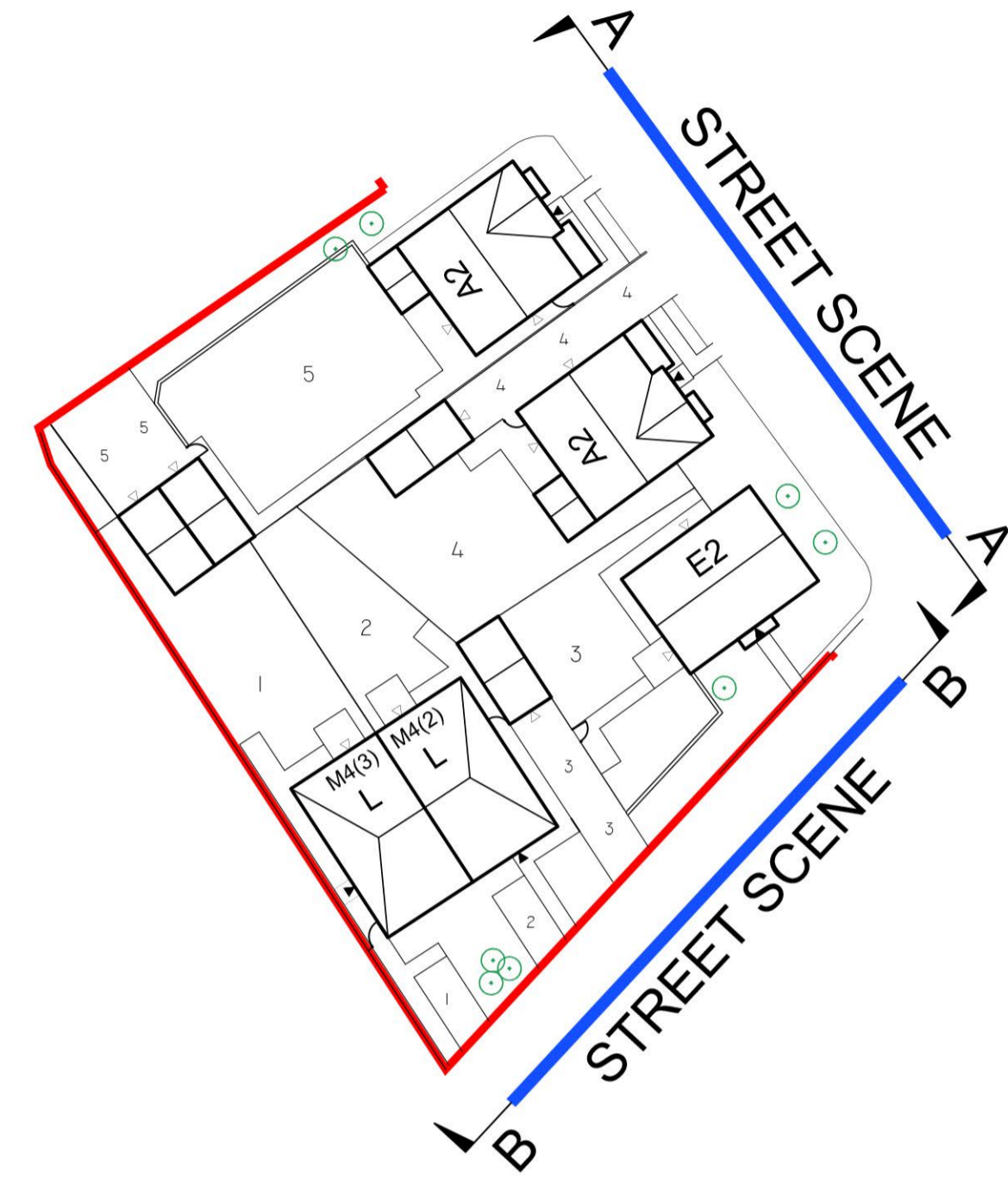


# Former Wombwell High School, Wombwell



STREET SCENE A-A @ 1:100



STREET SCENE B-B @ 1:100

Levels shown on street Scenes are indicative.  
Please refer to engineering details for further clarification.

REV.	DESCRIPTION	BY:	DATE:
F	Updated to Planning Layout K	TS	20.06.25
E	Visitor parking removed outside plot 3.	TS	23.01.25
D	Updated to Planning Layout G	TS	03.07.24
C	Updated to Planning Layout D	TS	06.07.23
B	Updated to Planning Layout C	VR	29.06.23
A	Gate added to plot 4	TS	22.12.22

**STEN**  
ARCHITECTURE

Suite 4, Unit 1,  
Benton Office Park,  
Bennett Avenue,  
Horbury,  
Walsley,  
WF4 6RA  
Tel: 01924 669424

Web: [www.sten-architecture.co.uk](http://www.sten-architecture.co.uk)  
Twitter: @STEN\_arch  
Facebook: [stenarchitecturetd](https://www.facebook.com/stenarchitecturetd)  
LinkedIn: Sten Architecture

CLIENT:	Premier construction northern 51 Rimington Road Wombwell Barnsley S73 8DQ
---------	---------------------------------------------------------------------------------------

SITE:	Former Wombwell High School Wombwell
-------	-----------------------------------------

TITLE:	Street Scenes
--------	---------------

SCALE AT A2:	DATE:	DRAWN:	CHECKED:
1:100	29.06.23	VR	
PROJECT NO:	DRAWING NO:	REVISION:	
2228	2228.04.B	F	

Scaled @ 1:100

