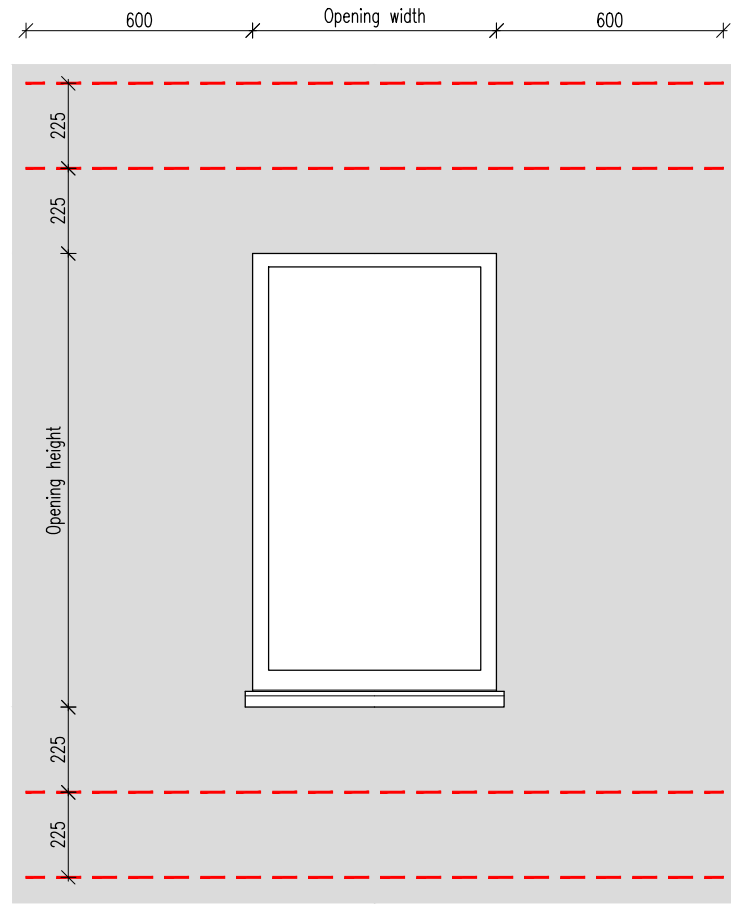


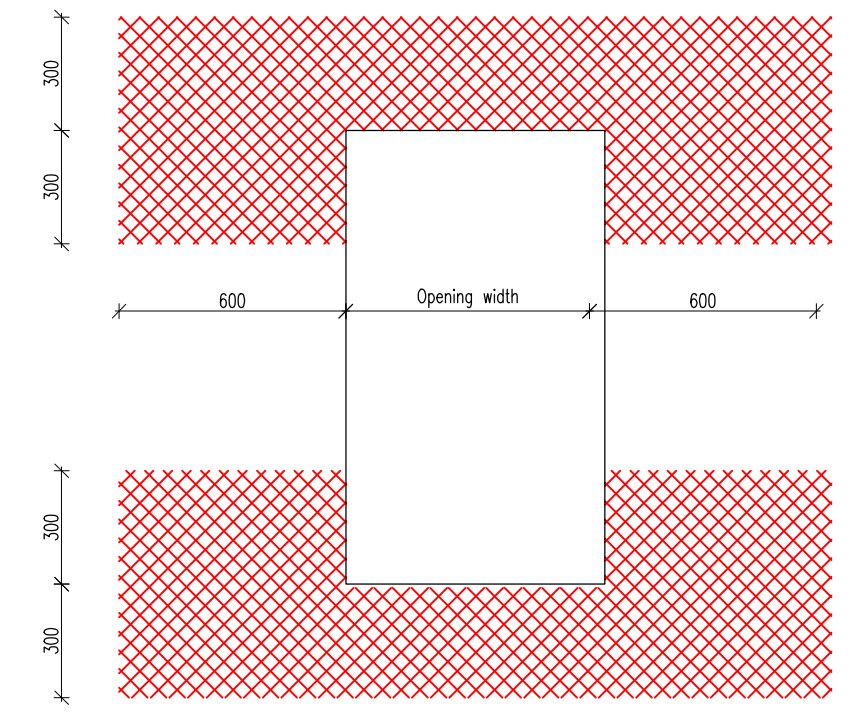
Head Detail
(1:5)

- Bed joint reinforcement to be provided for first two courses above and below any openings

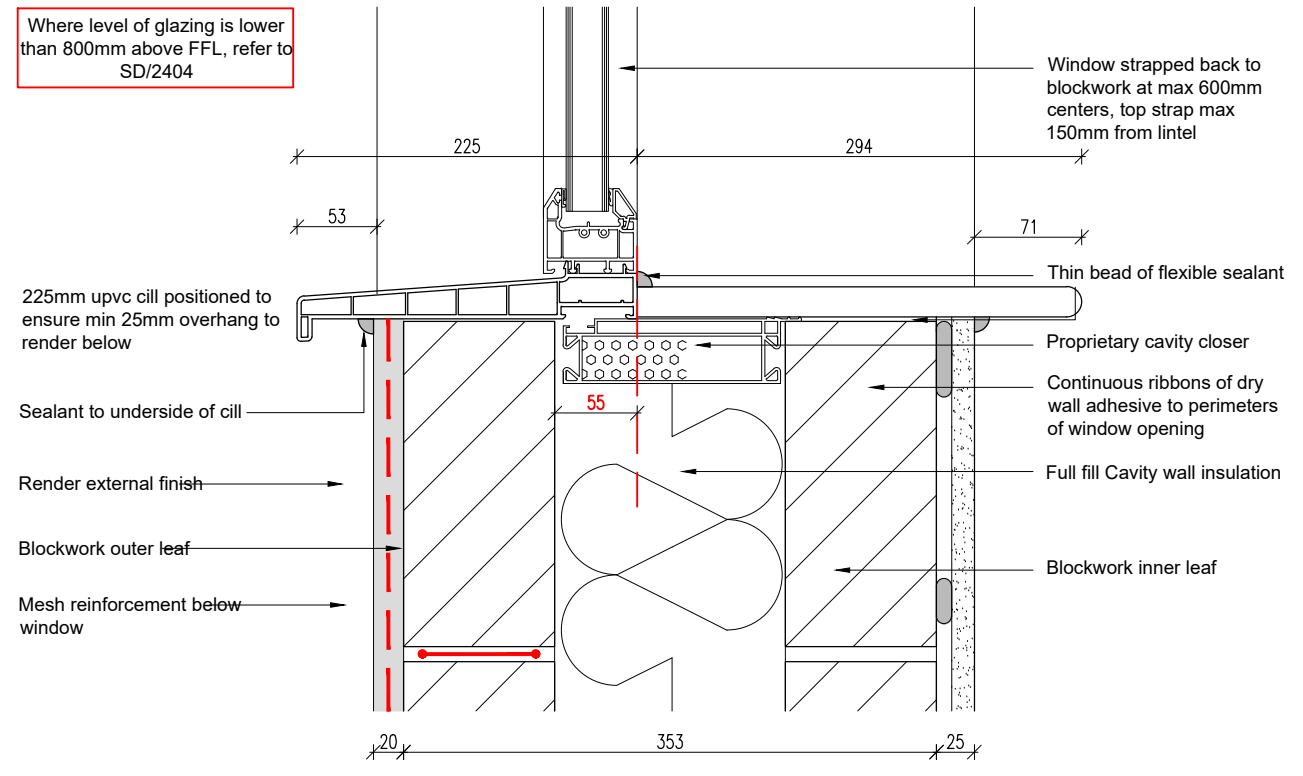


Elevation - Extent of BJR
(1:20)

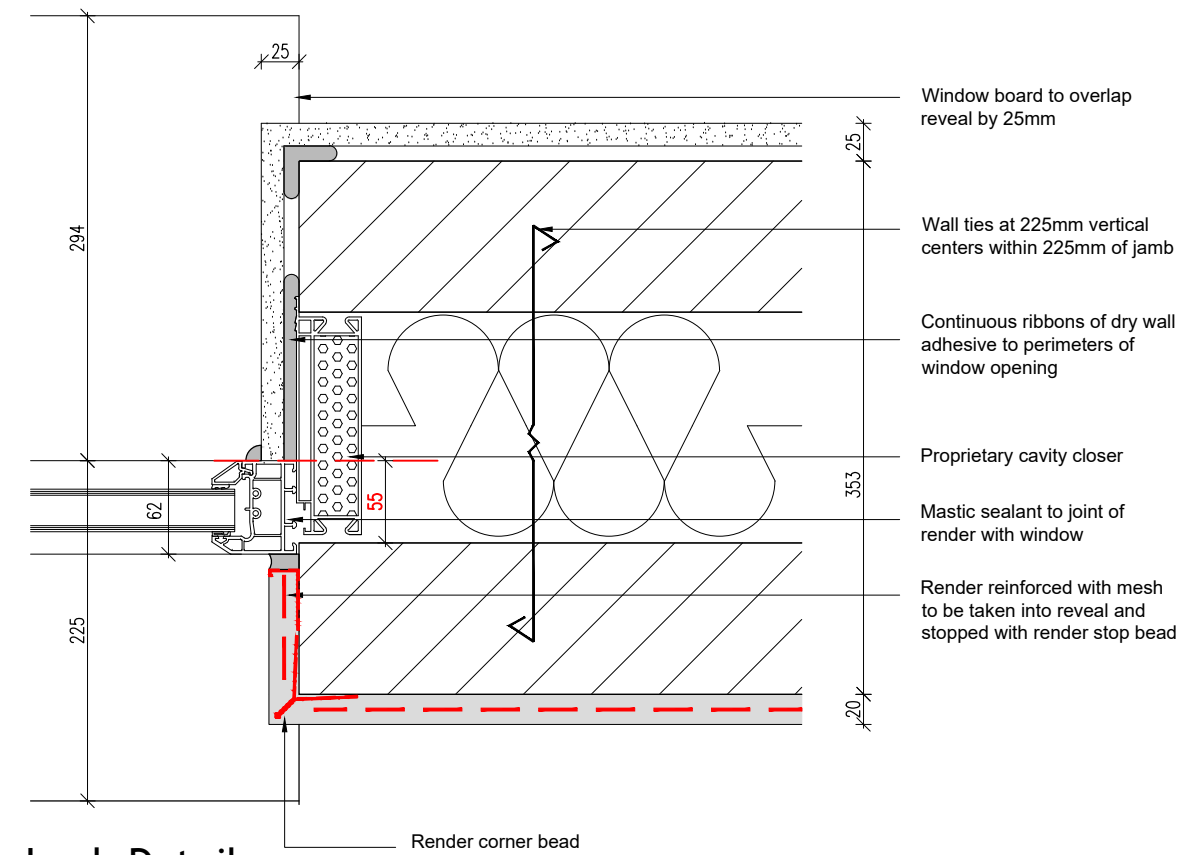
- Mesh to be fixed in accordance with the manufactures instructions
- To be supported at 350mm / 600mm centres (for stiffer profiles)
- Fixed with correct side facing out
- Ensure the mesh is fully embedded within the render coat. If an ashlar cut is required, ensure the mesh is placed sufficiently deep enough to avoid showing through the back face of the ashlar cut. (Additional thickness of render will be required for these applications).
- Always ensure the joints of the mesh and any additional layers of mesh never meet in the same location but are positioned a minimum of 200mm apart from each other.



Elevation - Extent of Mesh Reinforcement
(1:20)



Cill Detail
(1:5)



Jamb Detail
(1:5)

A Ext wall changed to show 150mm cavity 21.08.23 CF SJK

DATE	24.01.19	DRAWN	CF
SCALE	1:5/20 @ A3	CHK	SJK

**STANDARD DETAILS
2000 SERIES**

Render
Window Details
Head & Cill - Plain

Dwg No	SD/2503	Rev	A
--------	---------	-----	---

Keepmoat, The Waterfront, Lakeside Boulevard,
Doncaster, DN4 5PL.
Tel: 01302 347605 www.keepmoat.com