

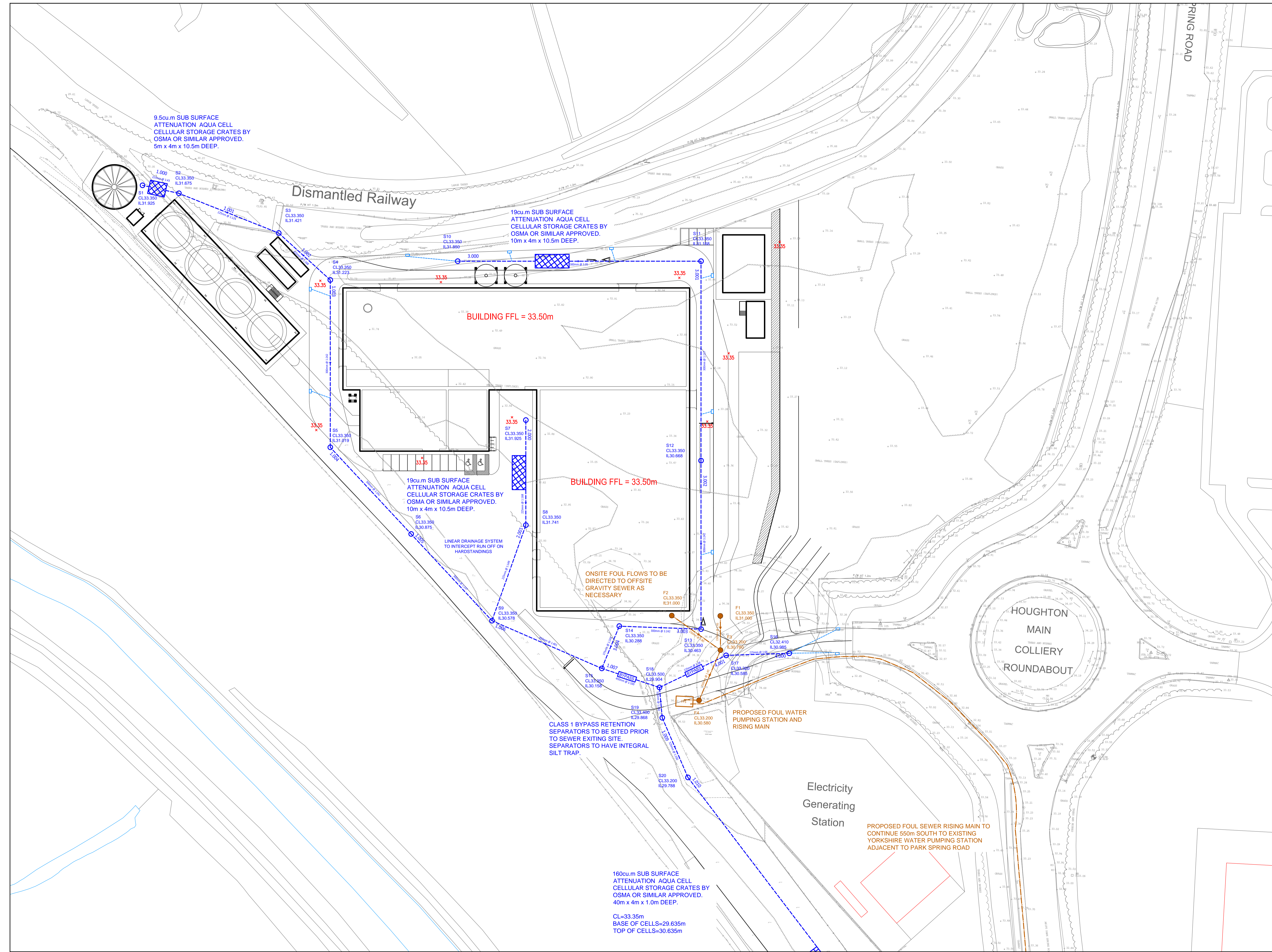
CELLULAR STORAGE SYSTEM

Attenuation crates indicated are based upon AquaCell Core and Plus units by Osma Wavin. Installation of crates to be in strict accordance with manufacturers requirements/details.

Attenuation system to have three additional Inspection Chambers and single layer spines of AquaCell Plus (centrally and along each outer edge) in order to assist with future inspection and maintenance needs. Details in accordance with manufacturers guidance.

Attenuation system to be wrapped in suitable impermeable geomembrane and be surrounded in 100mm min of coarse sand or non-angular granular material. Additional wrap of geo-textile fabric to be introduced followed by a further 100mm min of coarse sand or non-angular granular material.

All in accordance with manufacturers specification and guidance.



P4	02.15	Latest masterplan information added.	LPA	SL
P3	01.15	Drainage revised to suit revised masterplan.	LPA	SL
P2	09.14	Foul drainage revised to suit offsite solution.	LPA	SL
P1	05.14	Minor amendments following initial Draft.	LPA	SL
Rev	Date	Description	Drawn	Checked

ABLE LETCHFORD PARTNERSHIP
Consulting Engineers
Avebury 2, Elcot Park, Elcot Lane
Marlborough, Wiltshire SN8 2BG
www.alpce.co.uk Tel: 01672 519196

Client
ENZYGO LIMITED

Project
LAND OFF HOUGHTON MAIN COLLIERY R'BOUT PARK SPRINGS, BARNSELY

Title
DRAINAGE GENERAL ARRANGEMENT SHEET 1 OF 2

Status
FOR PLANNING

Scale	Date	Drawn	Checked
1:500 @ A1	APRIL 14	LPA	SL
Drawing No	A012-01		Revision
			P4