



Excellence in Signage & Display Graphics

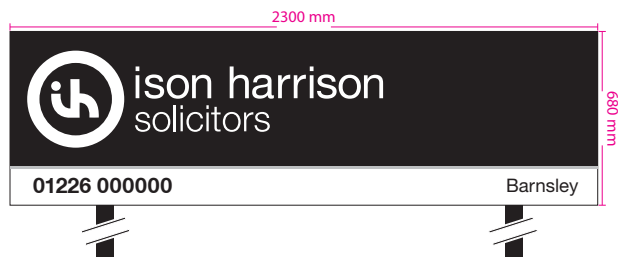
Account Manager: RL

Unit 5, 2 Freemans Way  
Harrogate, HG3 1DH

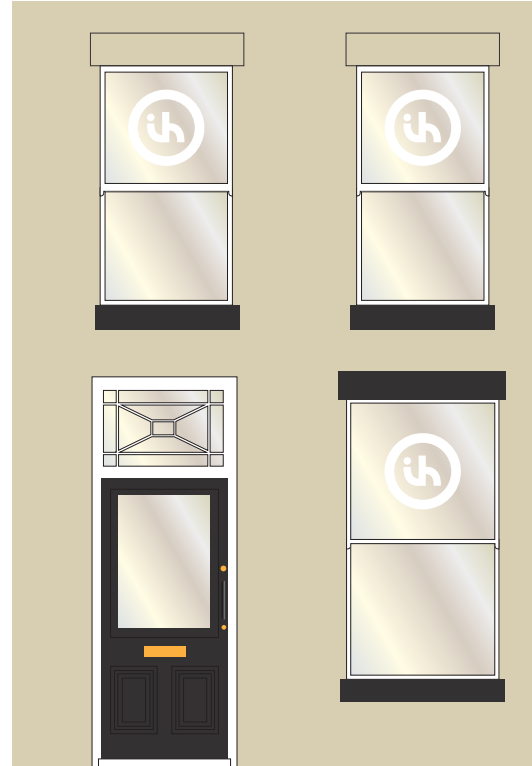
T 01423 885 045  
E rl@adbell.co.uk

[www.adbell.co.uk](http://www.adbell.co.uk)

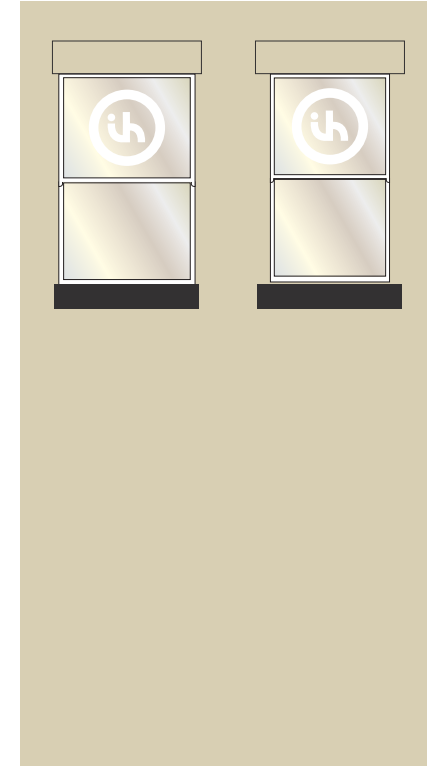
**3M**  
Authorised Vehicle Wrapper  
Graphics Products



Front windows



Rear windows



Landing window



Cut white vinyl logo's to windows

Folded aluminium tray powder coated black with vinyl graphics to face  
Mounted on 75mm sq posts mounted to rear of dwarf wall with stand off brackets

Whilst every effort is taken to ensure the proof is correct, it is the clients responsibility to check thoroughly before signing off any art work. Any alterations after approval may result in a surcharge.

Name:  Signed:  Date:



Excellence in Signage & Display Graphics

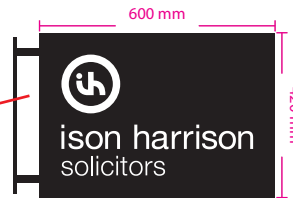
Account Manager: RL

Unit 5, 2 Freemans Way  
Harrogate, HG3 1DH

T 01423 885 045  
E rl@adbell.co.uk

[www.adbell.co.uk](http://www.adbell.co.uk)

**3M**  
Authorised Vehicle Wrapper  
Graphics Products



Double sided aluminium tray & bracket powder coated black with vinyl graphics applied to both sides

Whilst every effort is taken to ensure the proof is correct, it is the clients responsibility to check thoroughly before signing off any art work. Any alterations after approval may result in a surcharge.

Name:

Signed:

Date:



Excellence in Signage & Display Graphics

Account Manager: **RL**

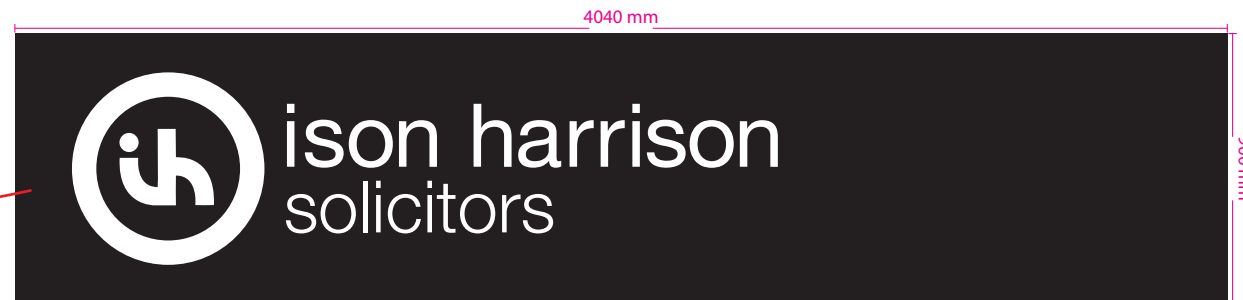
Unit 5, 2 Freemans Way  
Harrogate, HG3 1DH

T 01423 885 045

E rl@adbell.co.uk

[www.adbell.co.uk](http://www.adbell.co.uk)

**3M**  
Authorised Vehicle Wrapper  
Graphics Products



Aluminium panel fixed top railings with vinyl graphics applied

Whilst every effort is taken to ensure the proof is correct, it is the clients responsibility to check thoroughly before signing off any art work. Any alterations after approval may result in a surcharge.

Name:

Signed:

Date: