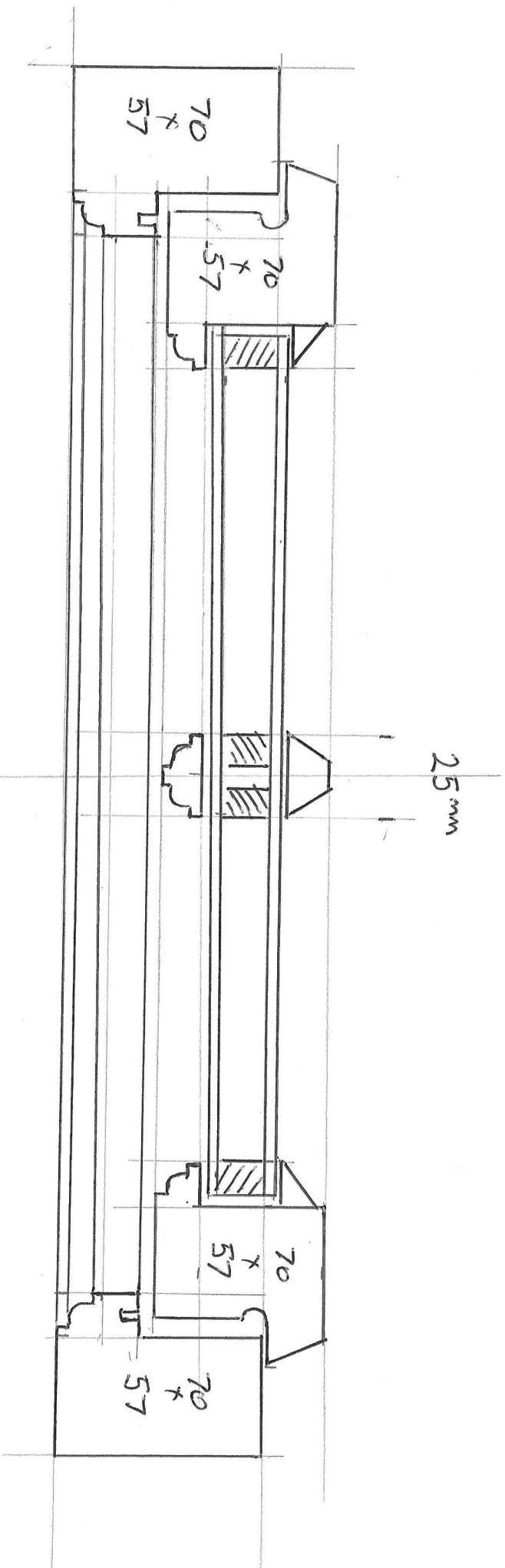


- 4/16/4 BLACK WARM EDGE
- SOFTCOAT
- ARGON FILLED

- FRICTION HINGES OR STAINLESS STEEL STORM PROOF

- ESPAG LOCKING OR STAY/FASTENER

- AQ21 DRAUGHT SEALS



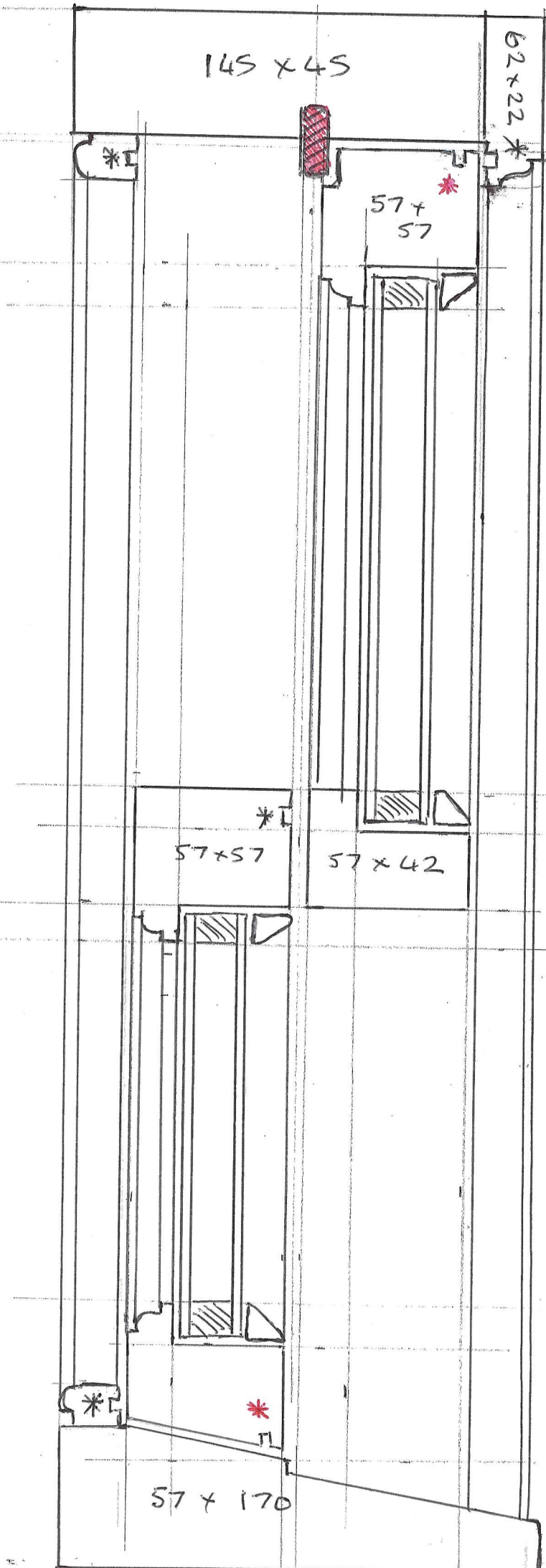
DETAIL SHOWING 25 mm DUPLEX BARS



ELEVATION

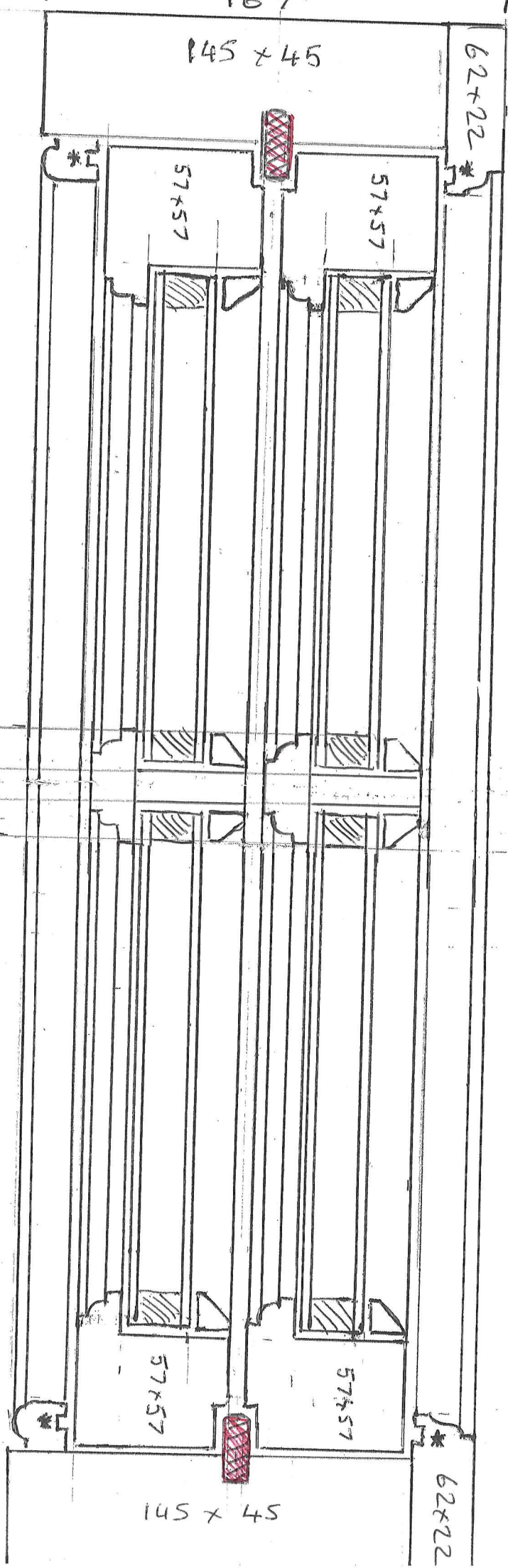
\* BRUSH PILE DRAUGHT SEAL

\* AQUAMAC 21



Approx 1:2

PLAN



- SPIRAL BALANCES + HOUSED IN SASH (NOT SHOWN)
- UNITS 4/16/4 BLACK WITHIN EDGE SPACE

SOFTCOAT  
AZGON FILLED

**PARFLIP 12**

\* BUSH PILE DRAUGHT SEALS

APPROX 1:2

140

HEAD

02 9.5

110

70 OR 55

40mm BORDER

FROM OUTER

BRICKWORK

OUT SIDE

57  
+  
57

57  
+  
42

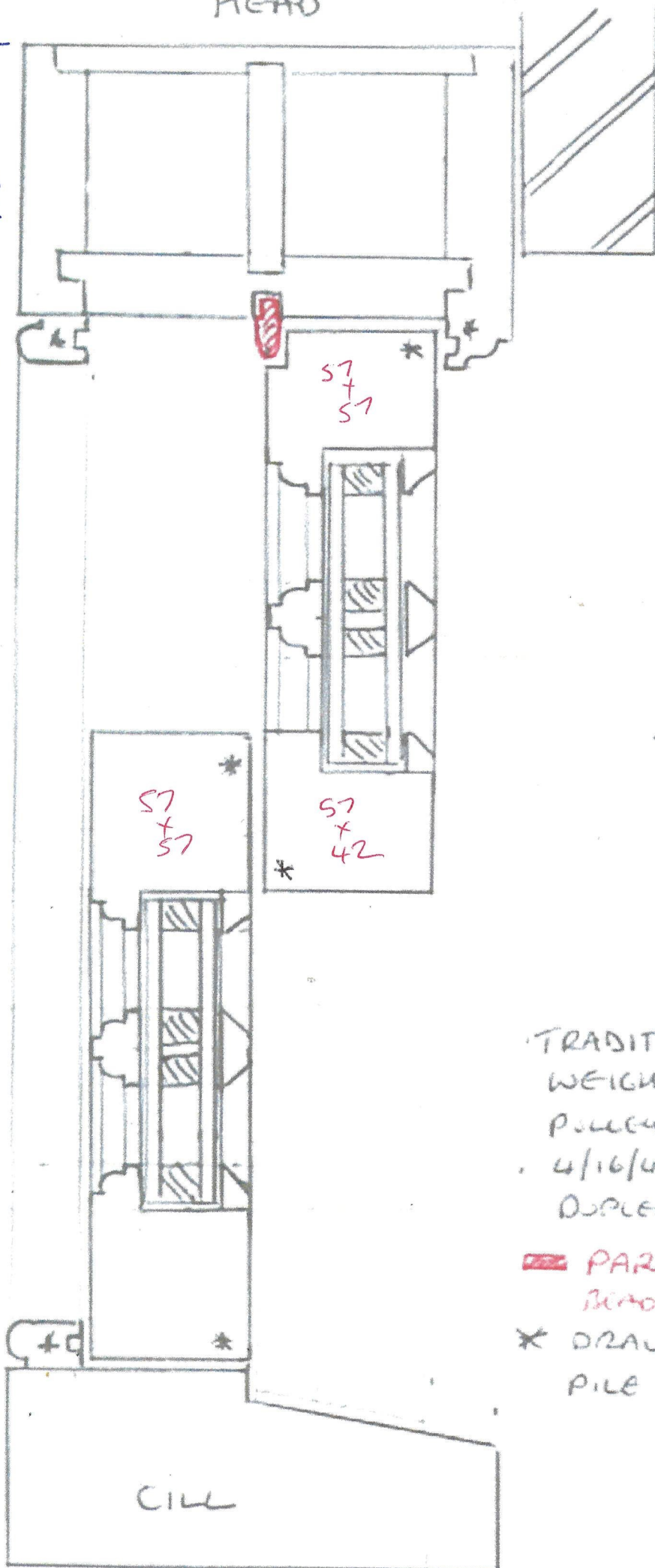
TRADITIONAL LEAD  
WEIGHTS ON CORD &  
PULLEYS

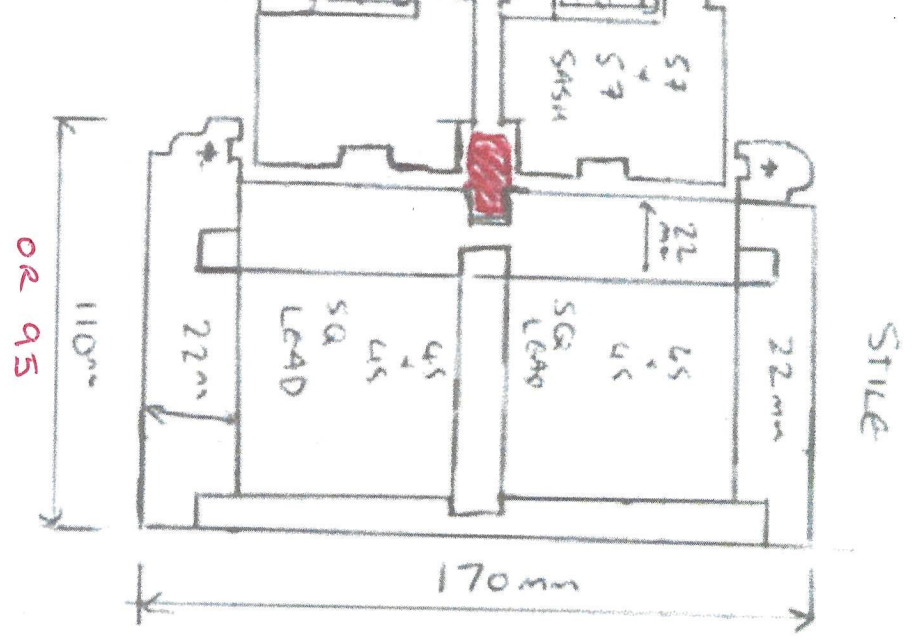
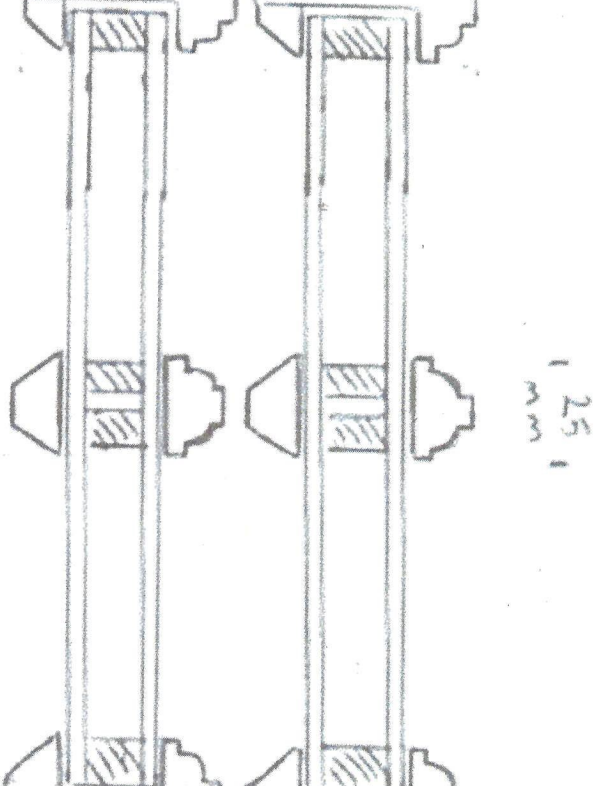
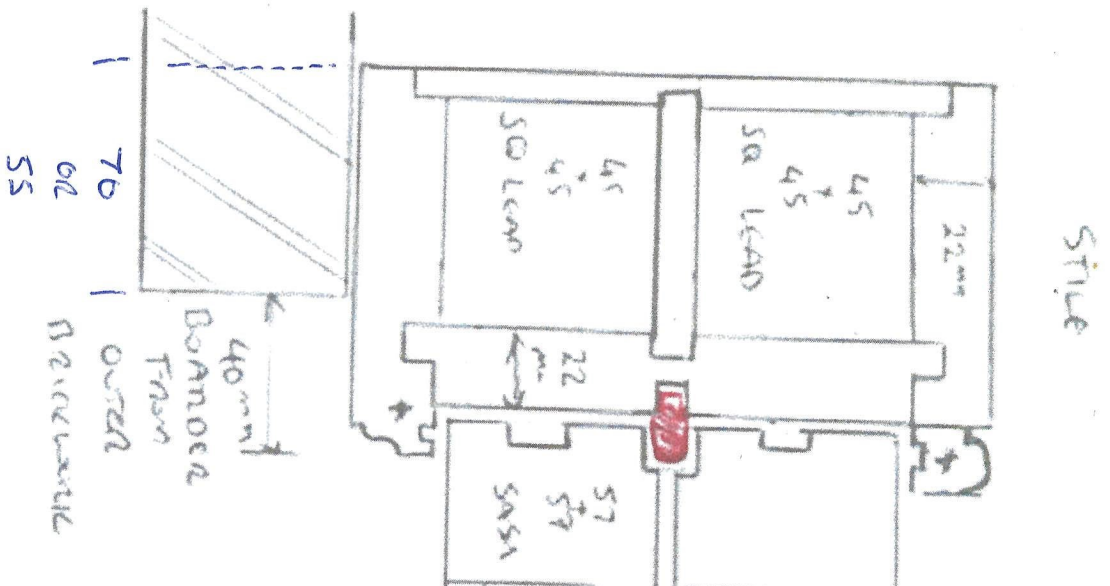
4/16/4 WARM EDGE SPACER  
DUPLEX - ARGON FILLED

 PARFLIP 12 PARTING  
BEAD

\* DRAUGHT SEAL / BRUSH  
PILE

CILL





OUTSIDE

- TRADITIONAL LEAD WEIGHTS ON CORNERS & RULERS
- 4/16th WARM EDGE SPACER/DUREX AREEN FILLED
- **PARFLIP 12 PARTING BEAD**
- **DRAGOUT SEAL / RAUSH PILE**