

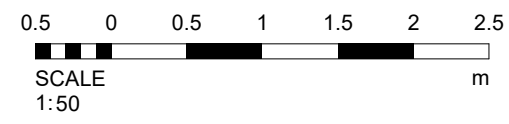
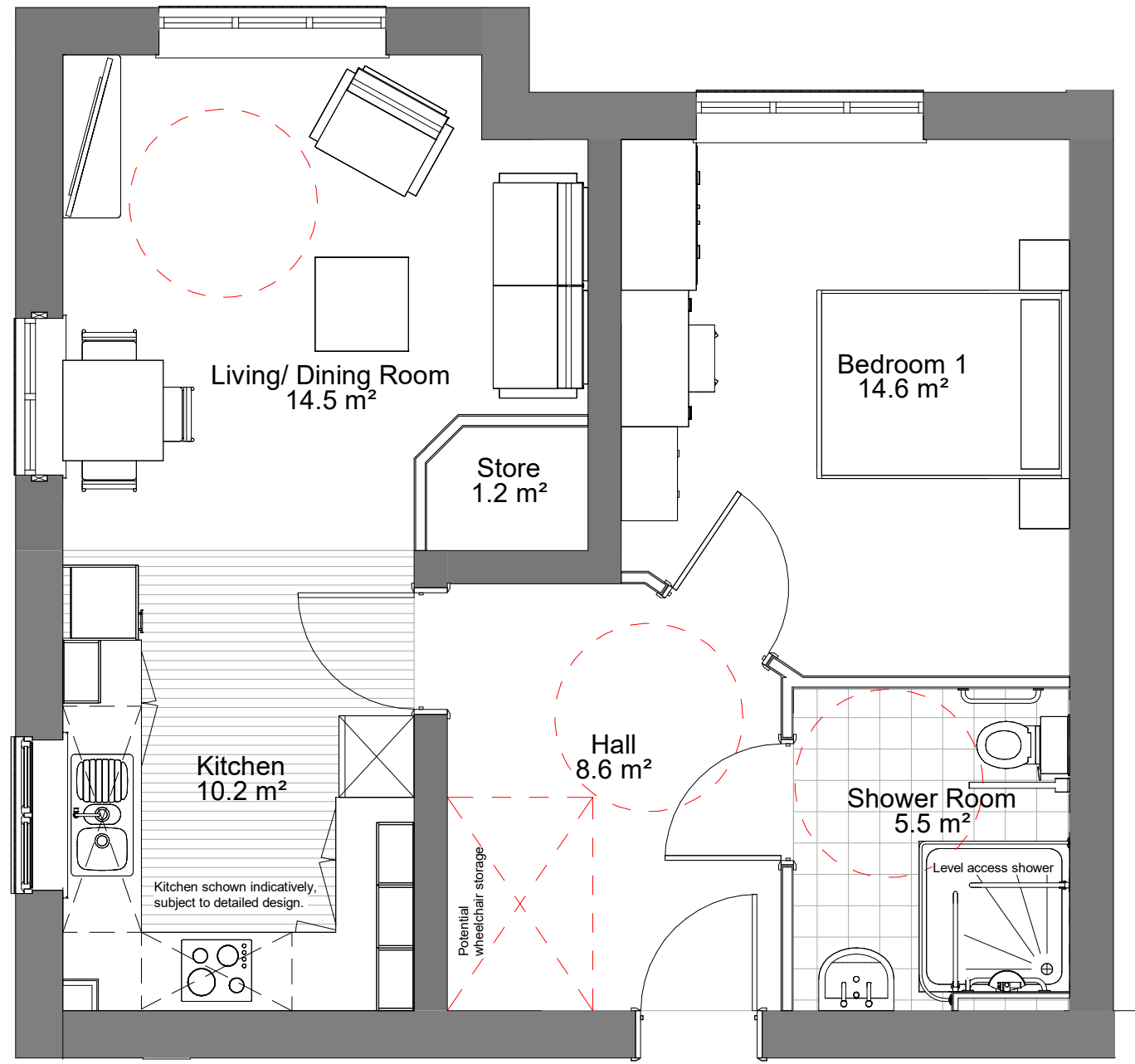
S:\4035 Vistry Partnership\49 Shaw Lane, Carlton\WIP\CAD and Design\3D Model\Plots\Apartment Block\Shaw Lane Apartment Block 2 storey.rvt

10/03/2026 16:43:43

The general contractor is responsible for the verification all dimensions on site and the architect is to be informed of any discrepancy.  
The status of information contained in a computer copy of this drawing shall be limited to that conveyed by the paper copy.

Revisions:

Rev	Description	Date	Issued by
P1	Initial issue.		NG/DRP
P2	Shower rooms updated.	10.3.26	NG/DRP



# 1 Bed 2 P Apartment Part M4(3) Compliant- Type A

## Apartment Building Shaw Lane, Carlton

### Vistry Group

Scale	1 : 50 @A3		
Date	March 2026		
Drawn/Checked	NG/ DRP		
4035-49- AWSM- A1- GF- DR- A- 114			
Status	S3	Rev	P2

### ACANTHUS ARCHITECTS