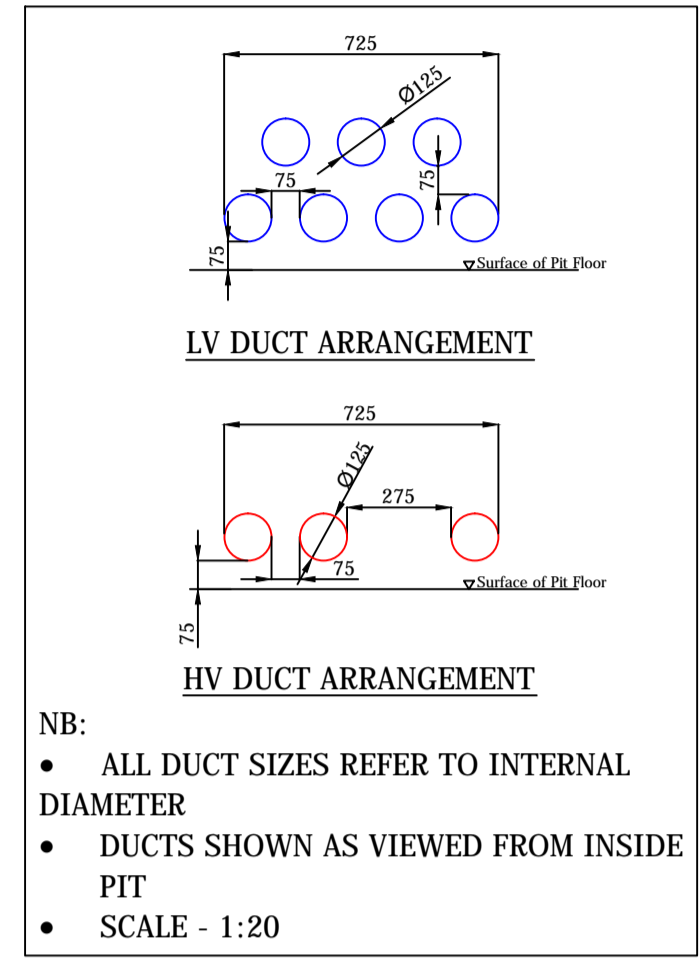
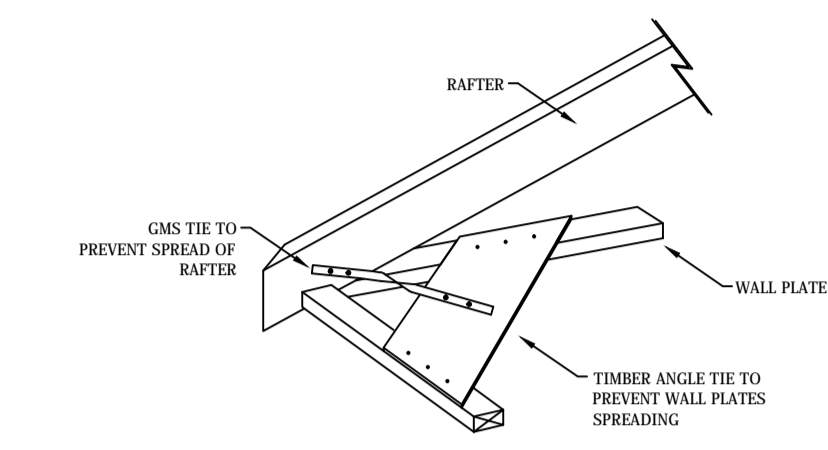
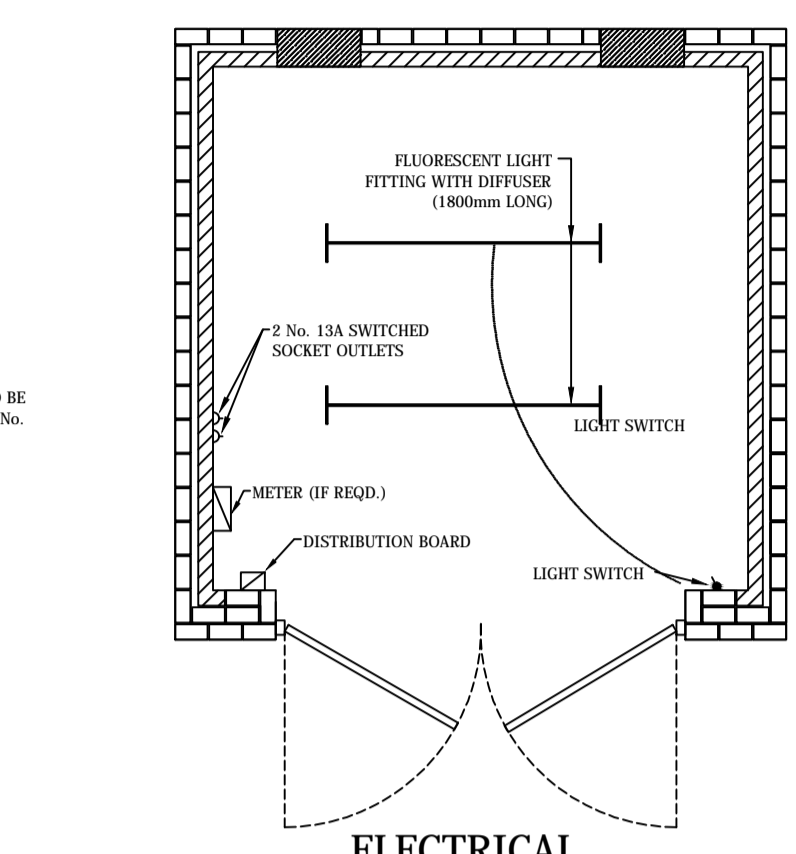
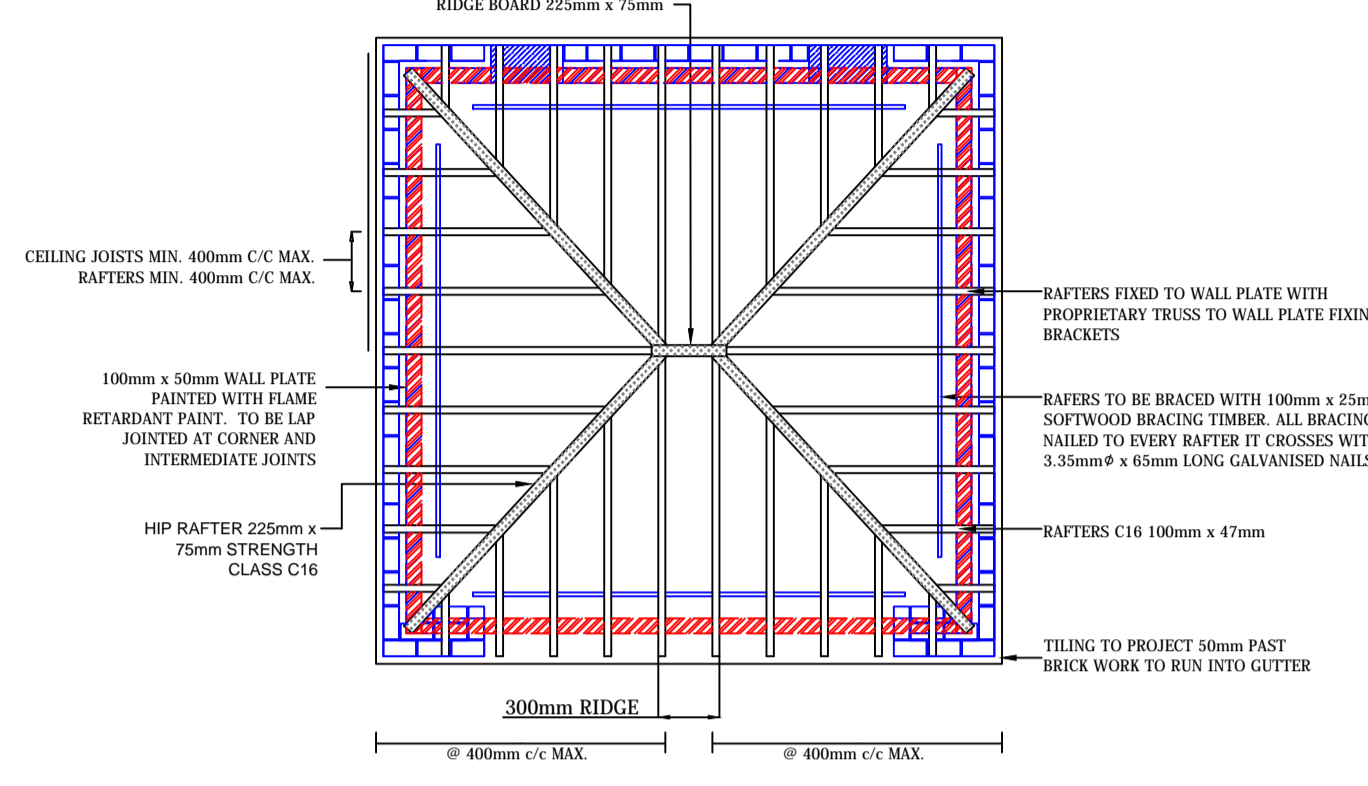
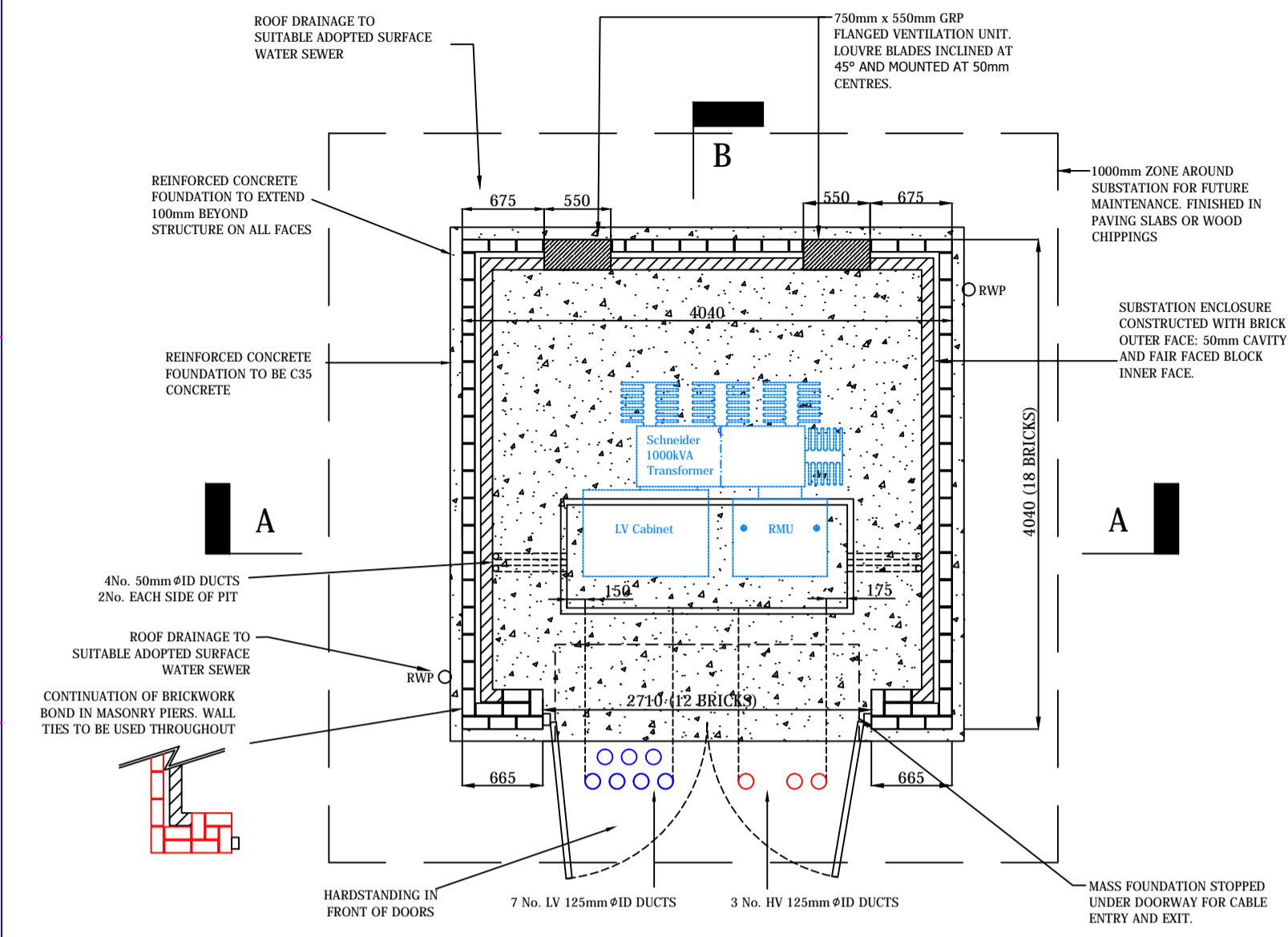
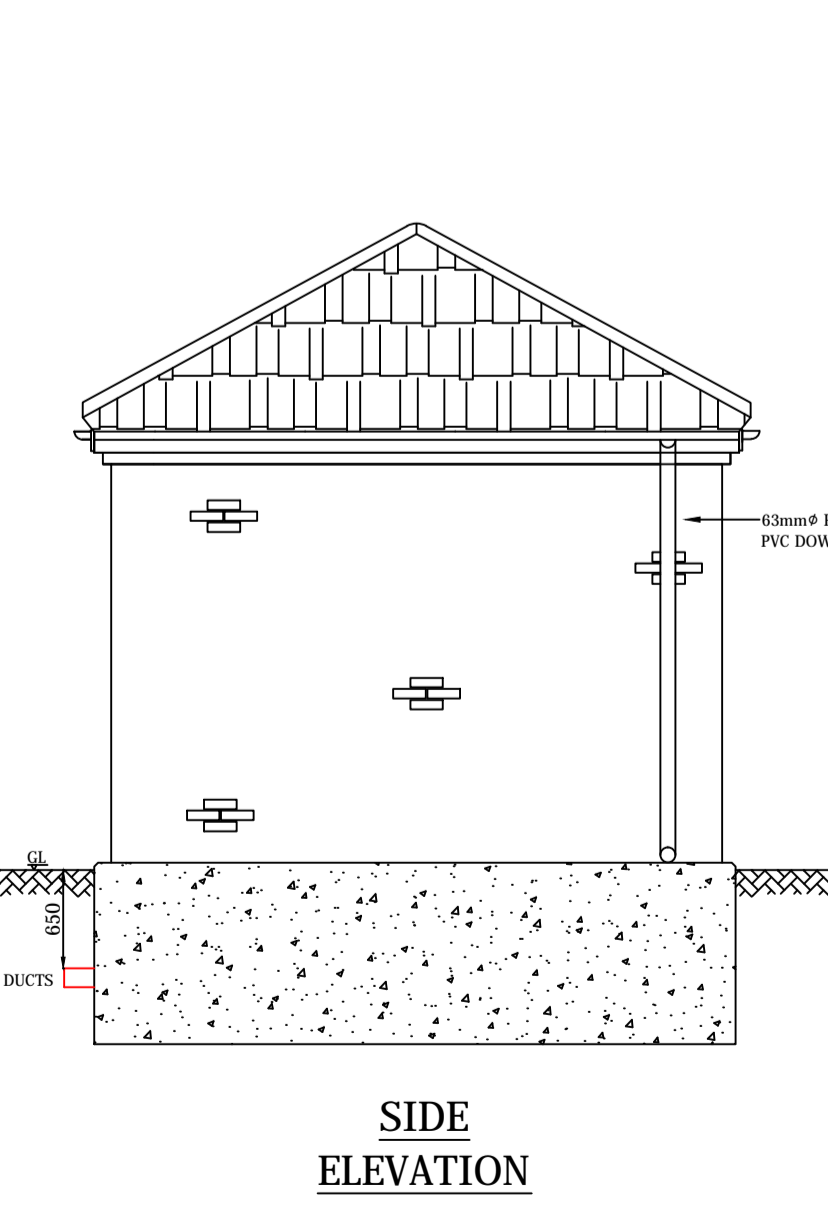
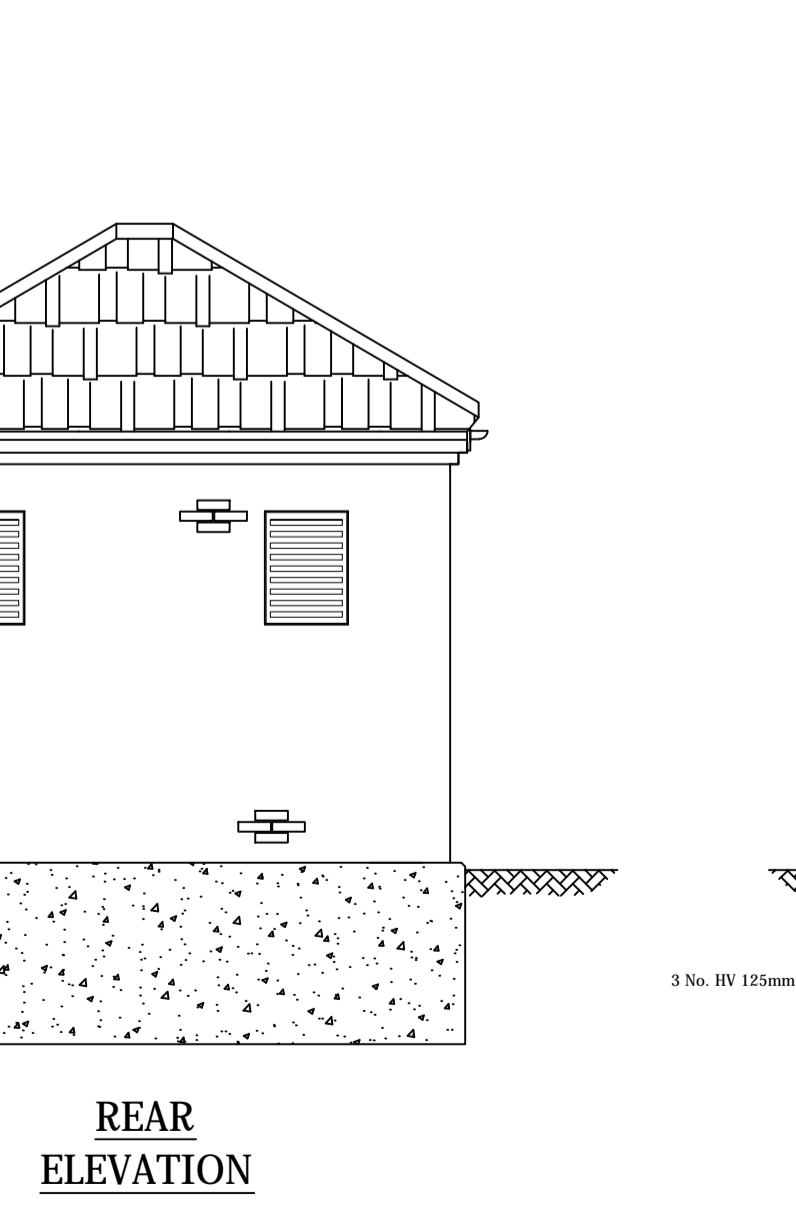
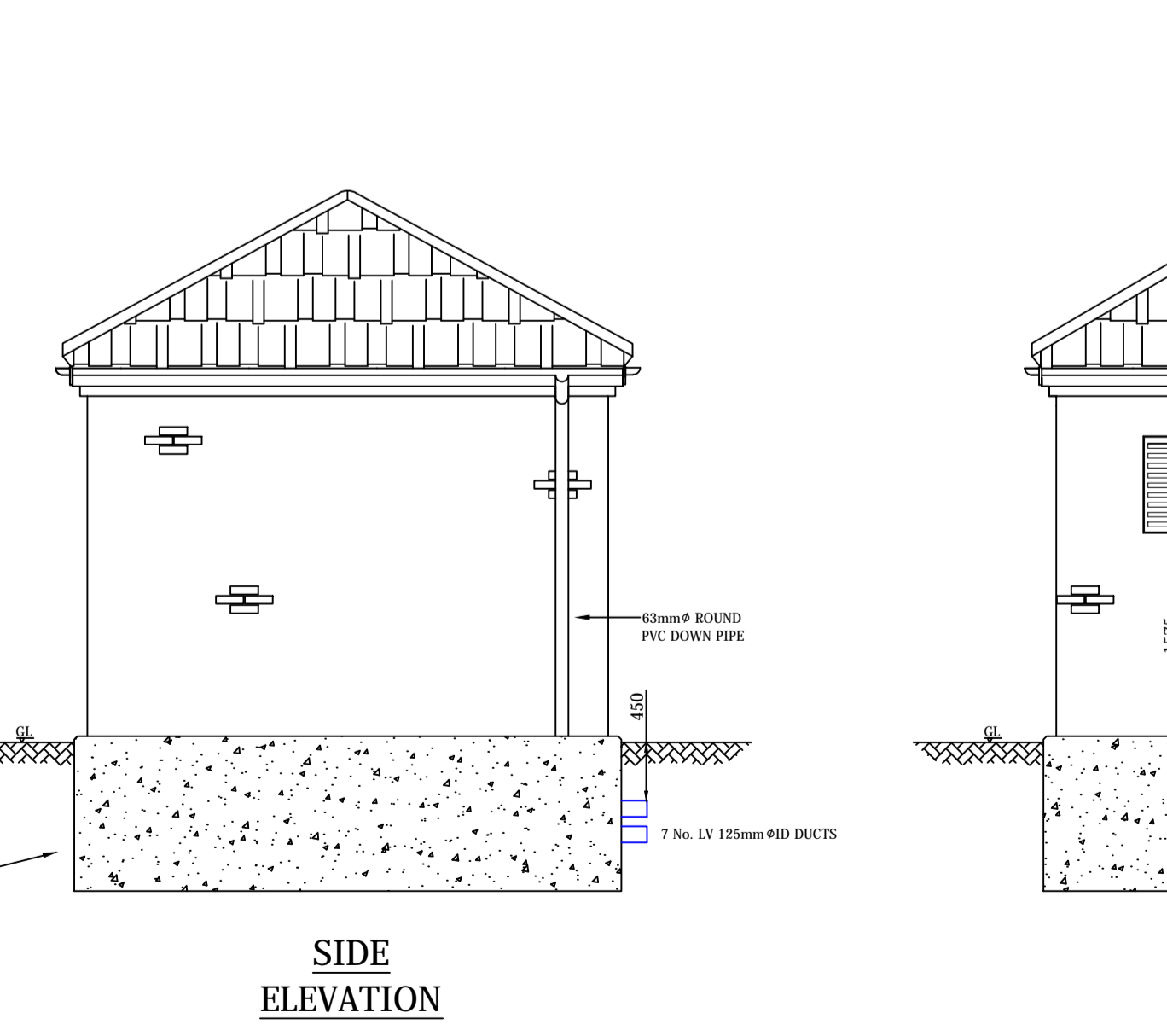
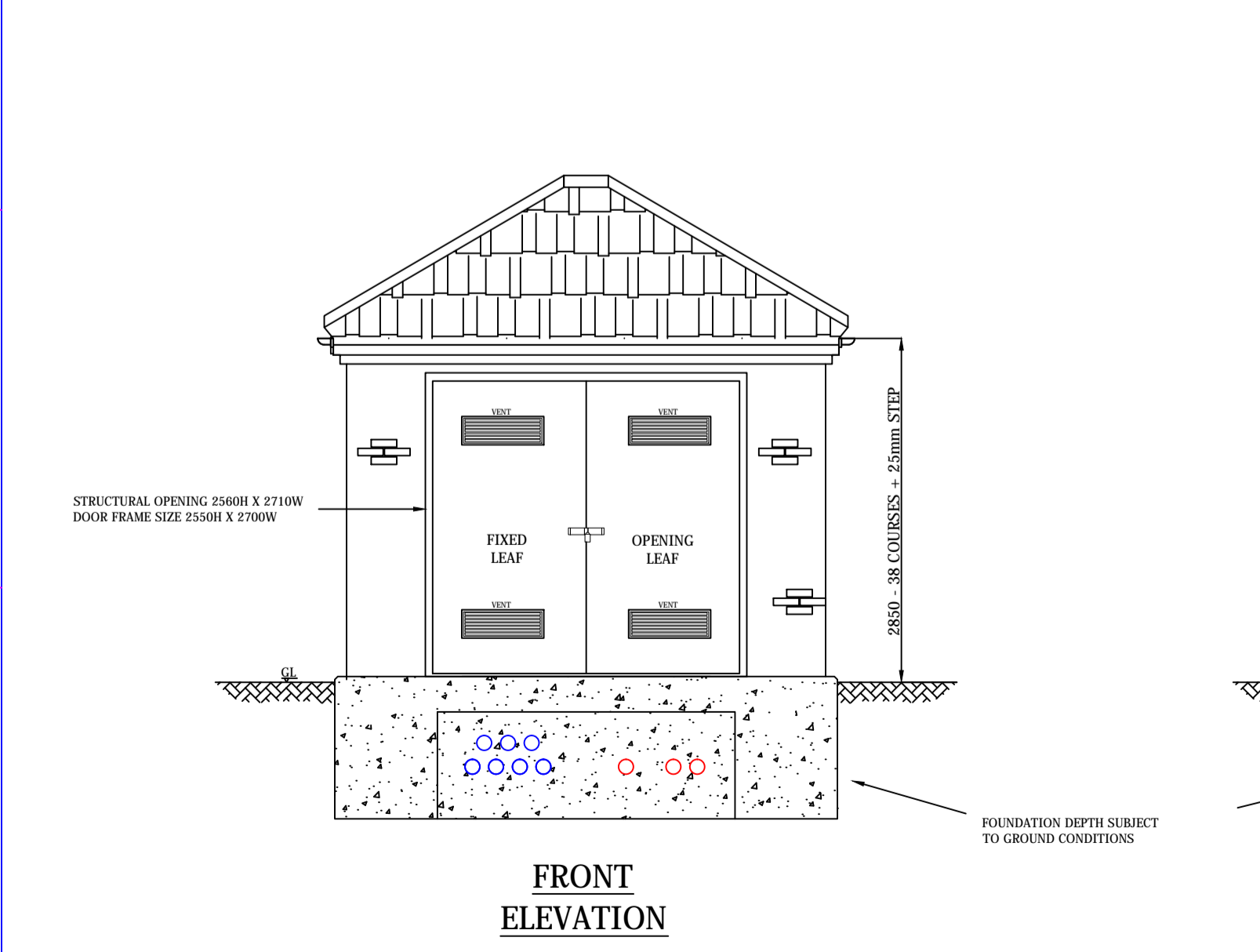
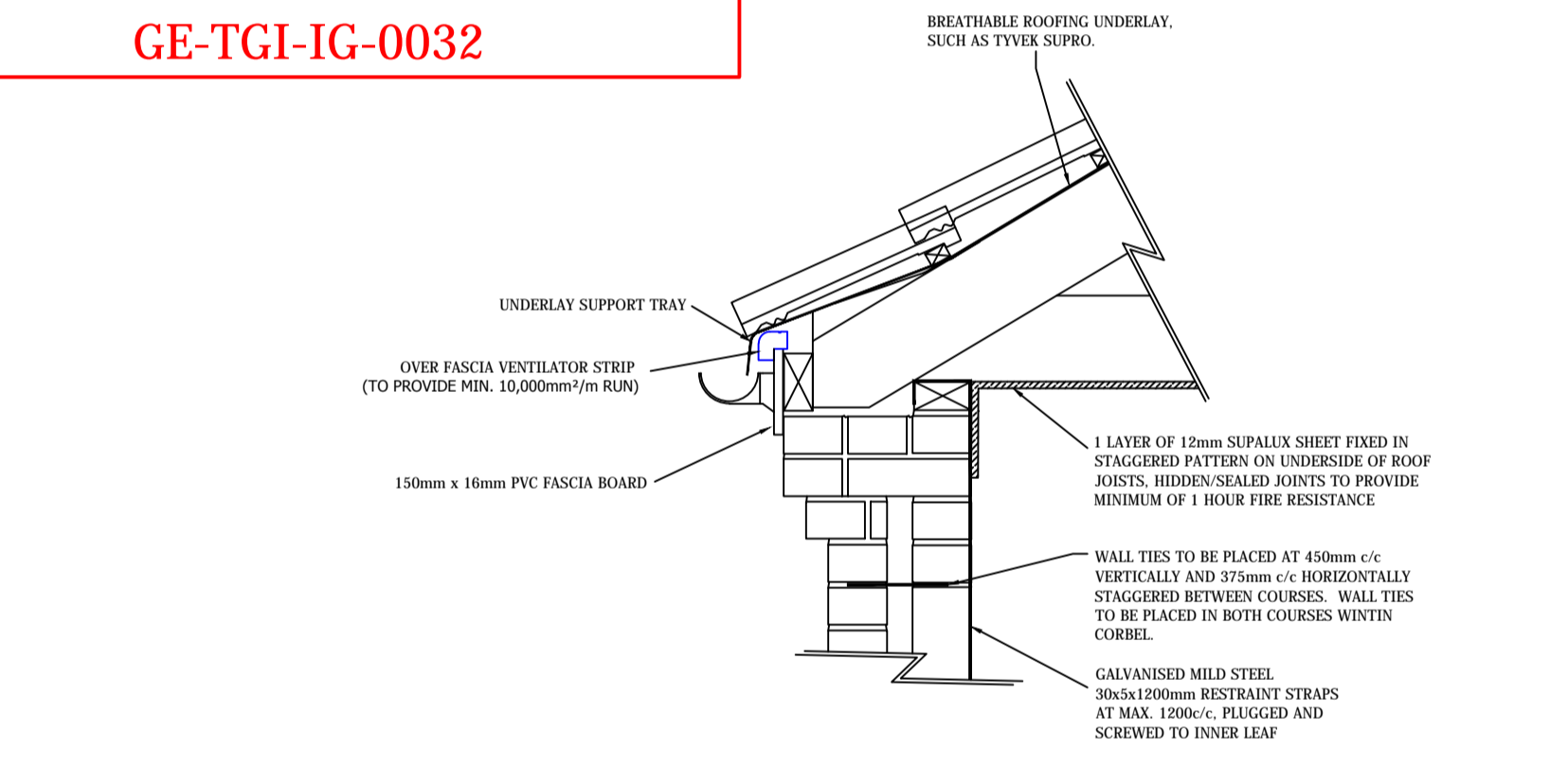
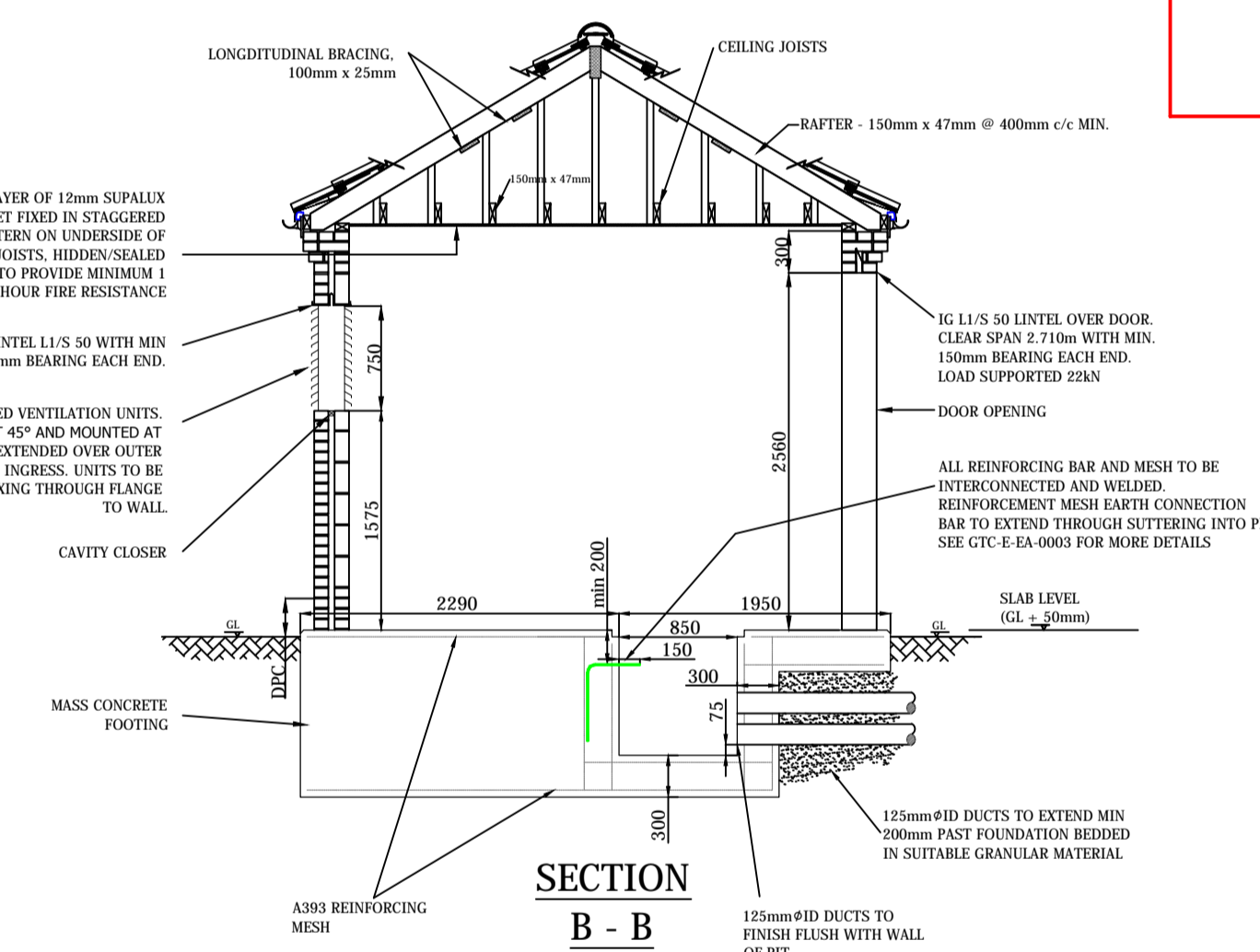
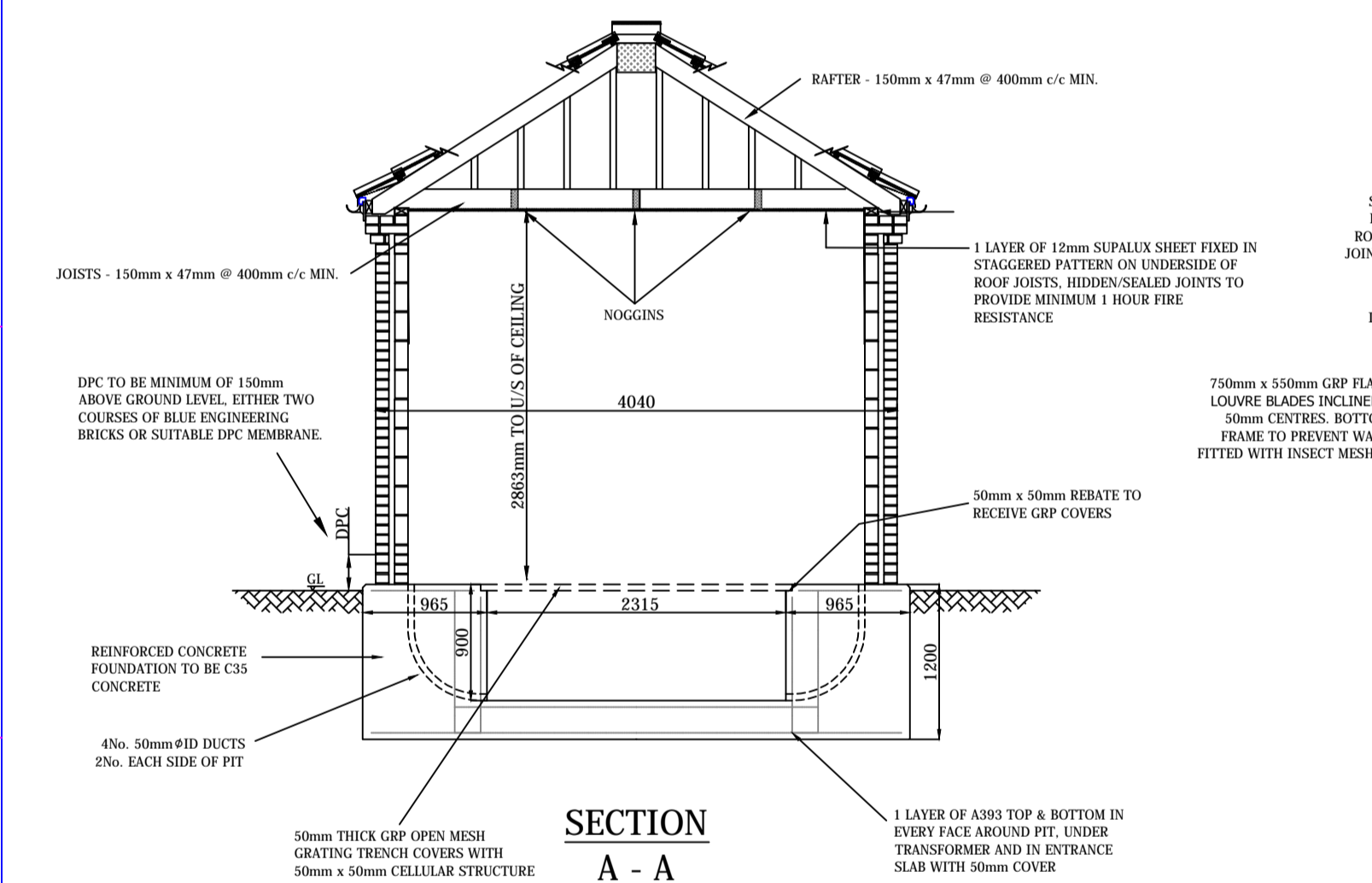


Rev	Revision Note	Date	Drawn by	Approved
1-2	Door Structural opening height altered	15/06/10	NN	MS
1-3	Wall hatch and drainage description altered	19/08/10	DS	KB
1-4	Electrical notes amended	13/01/11	SW	KB
1-5	Banded foundation and various general amendments added	18/02/11	AS	MS
1-6	Dimension and Earthing amendments	10/06/11	AS	MS
1-7	Door and Eaves details amended, ducts added	29/03/12	AS	MS
1-8	Wording of sub station stamp amended	10/09/14	SW	MS

APPROVED FOR CONSTRUCTION



FOR MORE FOUNDATION DETAIL PLEASE REFER TO GTC SUBSTATION DRAWING GTC-E-EA-0003 AND SUBSTATION DOCUMENT GE-TGI-IG-0032



GENERAL NOTES

1. IF IN DOUBT - ASK !!! DO NOT SCALE
2. THIS DRAWING IS TO BE READ IN CONJUNCTION WITH ALL OTHER ENGINEERING DRAWINGS IN THIS SERIES AND THE GTC SUBSTATION SPECIFICATION.
3. ALL WORK TO BE CARRIED OUT IN ACCORDANCE WITH THE RELEVANT BRITISH STANDARDS, CODES OF PRACTICE AND BUILDING PRACTICE.
4. ALL DIMENSIONS TO BE CHECKED PRIOR TO STARTING THE WORKS ON SITE. ANY DISCREPANCIES TO BE REPORTED TO THE ENGINEER IMMEDIATELY.
5. CONTRACTOR TO ASCERTAIN THE LOCATION OF SERVICES ON SITE PRIOR TO STARTING THE WORK.

ELECTRICAL NOTES

THE SUPPLY FOR THE SUBSTATION POWER AND LIGHTING WILL BE TAKEN FROM THE TRANSFORMER MOUNTED FUSE CABINET AUXILIARY FUSE WAY USING 6mm² COPPER SWA PVC CABLE TO SUPPLY A SINGLE PHASE 63A STREET LIGHTING CUT OUT MOUNTED BELOW THE POWER AND LIGHTING FUSE BOARD. THIS WILL FEED A 100A CONSUMER UNIT WITH A MINIMUM OF 4 MCB CONTROLLED WAYS (2No 16A FOR POWER AND 2No 6A FOR LIGHTING WITH A SPARE 16A WAY FOR SPECIAL REQUIREMENTS SUCH AS SCADA OR REMOTE ACTUATOR UNITS. EACH OUTGOING WAY WILL BE LABELED TO IDENTIFY CIRCUITS.

ALL INTERNAL WIRING TO BE CONTAINED IN 20mm HIGH IMPACT BLACK PVC CONDUIT AND ALL ACCESSORIES WILL BE NON METALLIC HIGH IMPACT AND FULLY INSULATED AND WEATHERPROOF AND SOURCE FROM A QUALITY MANUFACTURER (e.g. MEM OR MIM).

TWO 13A SWITCHED SOCKET OUTLETS WITH 30mA RCD PROTECTION WILL BE PROVIDED IN A CONVENIENT LOCATION ON THE LEFT HAND SIDE OF THE SUBSTATION.

TWO 1800mm FLUORESCENT LAMP UNITS WITH POLYCARBONATE COVERS TO AT LEAST IP54 SPECIFICATION WILL BE FITTED TO THE CEILING AND CONTROLLED BY A NON METALLIC RELAY INSULATED SWITCH FIBRE 1350mm ABOVE FINISHED FLOOR LEVEL ADJACENT TO THE FIRST LEAF OPENING DOOR. FOR GRP ROOFED SUBSTATIONS WALL MOUNTED BUSHHEAD LIGHTS WILL BE FITTED.

THE SOCKETS ARE TO BE WIRED IN 2.5mm² COPPER CABLE AND THE LIGHTING WIRED IN 1.5mm² COPPER CABLE.

THE ELECTRICAL INSTALLATION IS TO BE IN ACCORDANCE WITH THE CURRENT EDITION OF BS7671 - IEE WIRING REGULATIONS.

FOR SUBSTATIONS WITH SEPARATE HV AND LV EARTHING (HET EARTHING)

CARE MUST BE TAKEN WITH LIGHTING AND SOCKET SUPPLIES TO AVOID THE POSSIBILITY OF MAKING CONTACT BETWEEN DIFFERENT EARTHING SYSTEMS.

AT HOT SPOTS ALL FITTINGS, SWITCHES AND CONDUIT MUST BE NON-METALLIC AND FULLY INSULATED TO THE SPECIFICATION ABOVE.

ALL 13A SOCKETS (INCLUDING SOCKET OUTLETS IN THE TRANSFORMER MOUNTED FUSE CABINET) MUST BE PROTECTED BY A 30mA RCD WITH THE EARTH TERMINAL CONNECTED TO THE HV STEELWORK.

APPROVED SUPPLIERS

STANDARD GRP SUBSTATION DOORS, VENTILATORS AND GRP TRENCH COVERS:
ENVIRO MANUFACTURE, OBTAINED FROM:
UTILITY POWER SYSTEMS, CARWOOD ROAD, CHESTERFIELD TRADING ESTATE, CHESTERFIELD S41 9QB
Tel: 01246 702660
Fax: 01246 455015
Contact: ROB TAYLOR

STEEL DOORS AND VENTILATORS AND GRP TRENCH COVERS:
SUNRAY ENGINEERING LTD, KINGSNORTH INDUSTRIAL ESTATE, WOOTTON ROAD, ASHFORD, KENT TN25 6EL
Tel: 01233 636000
Fax: 01233 625137
Email: SALES@SUNRAYDOORS.CO.UK

CABLELING SYSTEM
ERICO, 52 MILFORD ROAD, READING, BERKSHIRE, RL1 8LJ
Tel: 01189 588586

Drawing Scale : 1:50
O.S. REF : N/A
Network Number : N/A
Project Number :
Drawing Number : GTC-E-SS-0012_R1-8_1_of_1

enc
the electricity network co.

CLOSE COUPLED SUBSTATION
PYRAMID ROOF DETAIL
GENERAL ARRANGEMENT

SHEET SIZE **A1**