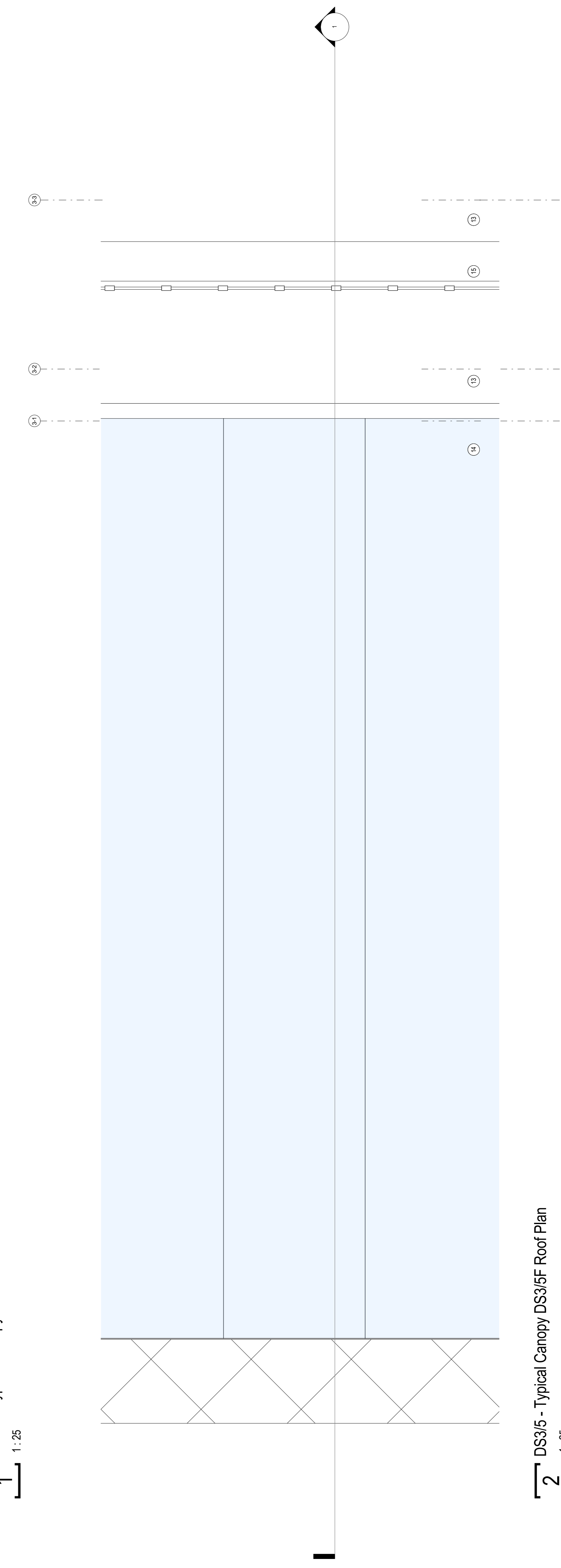
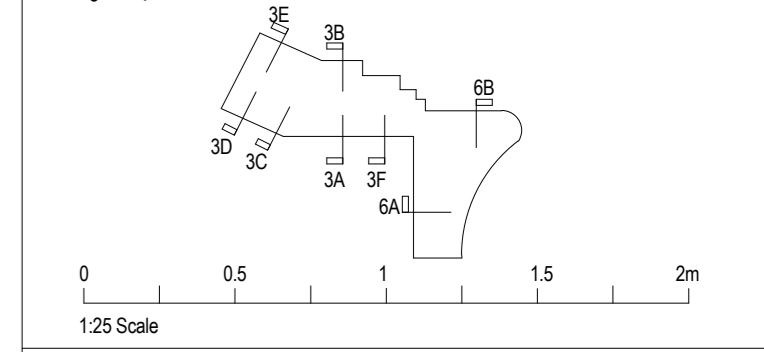


1 DS3/5 - Typical Canopy DS3/5F Section  
1:25



2 DS3/5 - Typical Canopy DS3/5F Roof Plan  
1:25

Notes:  
 • This drawing is copyright.  
 • Do not scale dimensions from this drawing.  
 • This drawing is to be read in conjunction with all other relevant drawings.  
 • All dimensions on this drawing are to be reported to the architect.  
 • Do not modify any element of this drawing.  
 • This drawing is for purposes stated.  
 North Sign: Key Plan



The following external model files are included within this drawing

Ref	Description	Keyfile
01	Butt brick slips on metal carrier system. Secured to SFS and structure. Fixing brackets and insulated Tophat rails fixed to SFS framework (not sheathing board) to cladding manufacturers design.	EWCI1
02	GRC column and beam fixings to achieve high quality 'Portland Stone' effect.	EW3
03	GRC column base detail to achieve high quality 'Portland Stone' effect.	EW3
04	Profiled insulated aluminium rainscreen on SFS/cladding rails.	EW2
05	Anodised curtain walling screens.	EG1
06	Anodised insulated spandrel panels.	EG1
07	Anodised Aluminium perforated cladding panels, glazed into Curtain Walling system to car park Elevations. Detailed perforation pattern to be confirmed.	EW7
08	Metal rainscreen panels.	EW4
10	Powder coated aluminium external door/shutter shutters.	
11	Powder coated aluminium louvre screens to plant areas.	EW3
13	Fully adhered single ply membrane/liquid applied waterproofing warm roof system, on dual layer acoustic mineral wool insulation system. Insulation and acoustic membrane thickness to provide target U-Value and sound reduction. Roof drainage falls (min 1:60) to be achieved by variable gully heights.	RT1
14	Glazed canopy on feature steel sections.	
15	Polyester powder coated aluminium coping system.	EW10
16	Polyester powder coated aluminium insulated flashing.	EW11
17	Suspended internal signage.	
18	Flat soffit metal panel system.	EW3
19	Translucent illuminated panels within cladding system.	EW5
20	Powder coated steel security gate/financing.	
21	Structural floor with waterproofing.	FT3
22	Concrete (Cast in situ).	
23	GRC panels to achieve high quality 'Portland Stone' effect.	
64	Profiled metal cladding with in situ concrete, polymer modified polyester reinforced blumes roofing membranes, rounded pebbles paving slabs.	

1	12/24/17	Planning Issue	CA	SL
Rev	Date	Revision Notes	Drawn	Checked

Client: Turner & Townsend



Project: Better Bamsley Town Centre Phase 2 - Development Site 3/5 & G7

Drawing Title: DS3/5 - Typical Canopy DS3/5F Details

Job Number	Date Created	PAS 1192 Status Code
50727	April 2017	
Scale/Alt	Purpose	
1:25	Planning	

Drawing Number	Revision
BBTC_IBI_DS_A_F100_DT_09	1