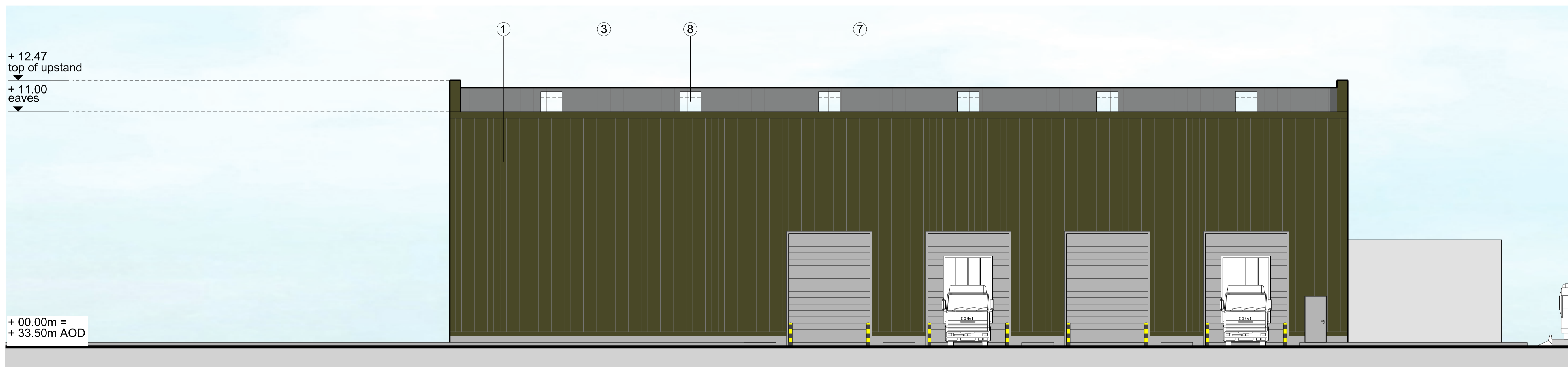
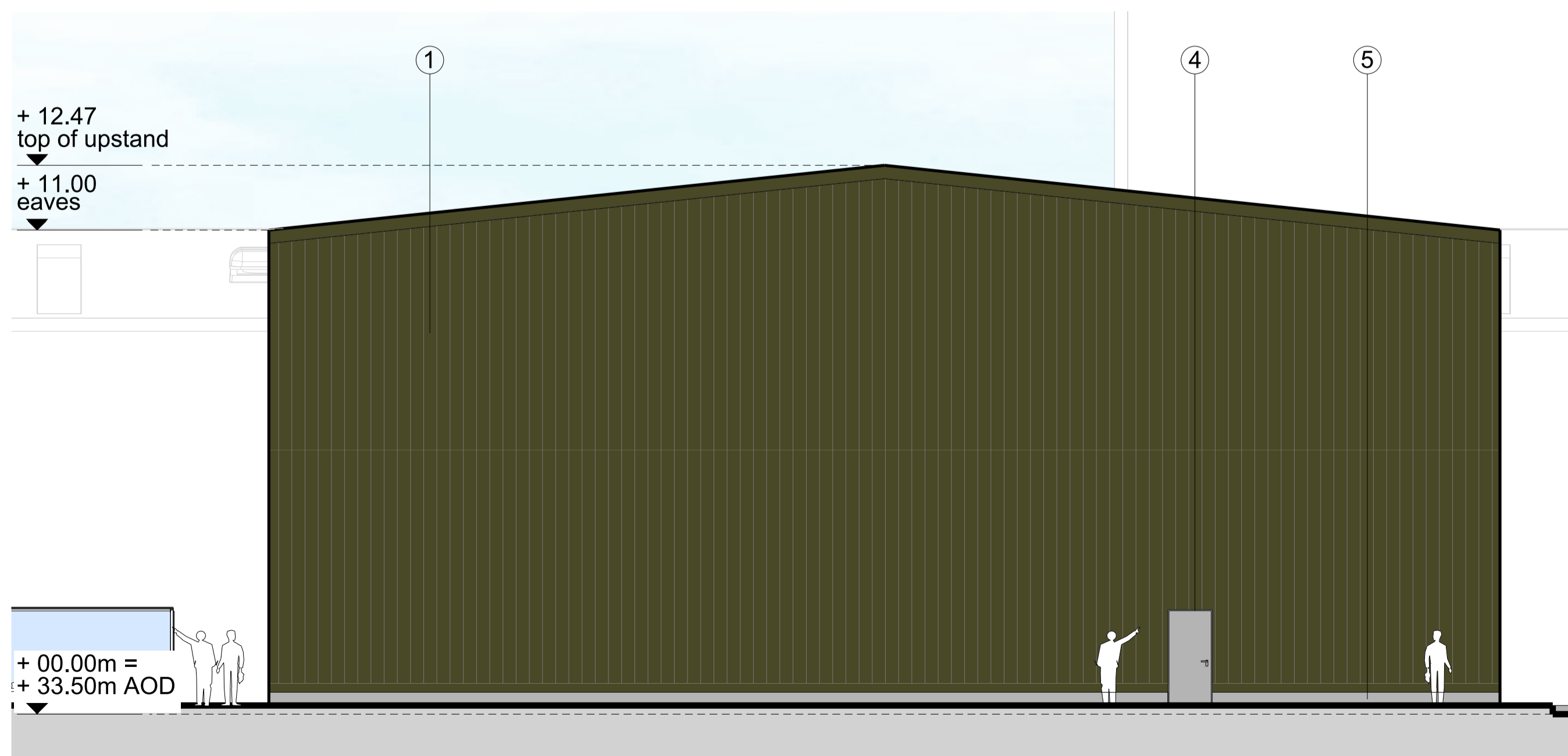


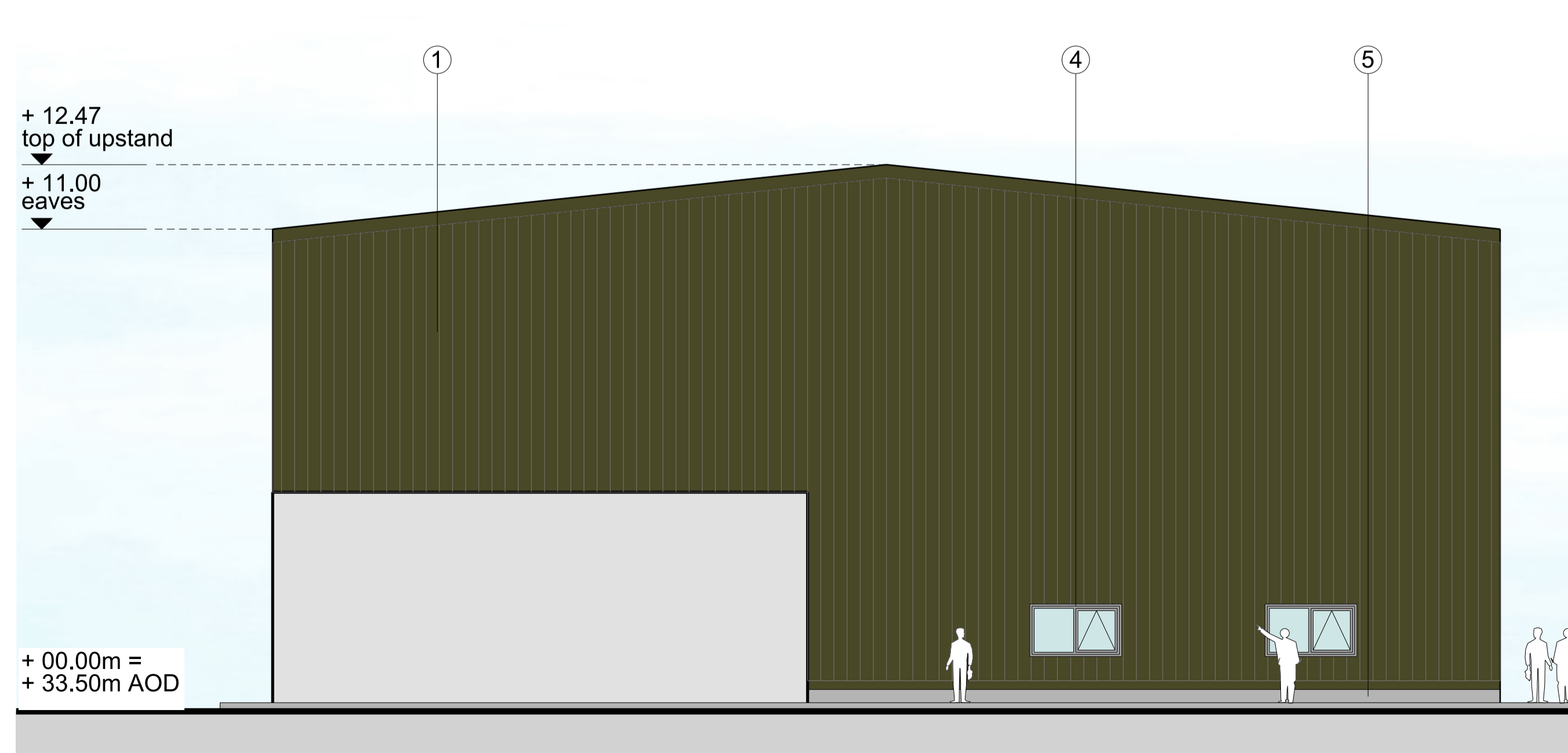
South elevation



North elevation



East elevation



West elevation

- NOTE
1. THIS DRAWING IS COPYRIGHT STUDIO E LLP
  2. THE CONTRACTOR MUST NOT SCALE FROM THE DRAWING ALL DIMENSIONS TO BE TAKEN FROM DIMENSION STRINGS.
  3. WHERE ANY DISCREPANCIES ARE FOUND BETWEEN DIMENSIONS THESE MUST BE BROUGHT TO THE ATTENTION OF THE ARCHITECTS FOR RESOLUTION.
  4. WHERE DISCREPANCIES EXIST BETWEEN REFERENCE OR ASSEMBLY DRAWINGS & DETAIL DRAWINGS, THE LATTER TAKE PREFERENCE.

- MATERIALS KEY
- 1 Plastic Coated Steel Cladding, Trapezoidal Profile Colour: Olive Green (RAL 100 30 20)
  - 2 Metal Ventilation Louvers Colour: Olive Green (RAL 100 30 20)
  - 3 Plastic Coated Steel Roof System, Trapezoidal Profile Colour: Pure Grey (RAL 000 55 00)
  - 4 PPC Aluminium Window Frames And Doors Colour: Merlin Grey (RAL 180 40 05)
  - 5 Grey Engineering Brick Plinth
  - 6 Metal Stack Colour: Oyster (RAL 7035)
  - 7 Metal Roller Shutter Doors
  - 8 In-Plane Polycarbonate Rooflight System
  - 9 Roof Vent Cows
- Note: All materials, finishes and colours will be as stated or similar approved

140509	Issued for planning
--------	---------------------

FOR PLANNING		
STUDIO E LLP		
<small>Palace Wood, Bishopton Road, London, W16 7JG Tel: 020 7381 4995 Fax: 020 7381 4995</small>		
HOUGHTON MAIN REP		
PROJECT		
Proposed AD process building elevations		
DRAWING		
1:100@A1	140509	
1:200@A3		
SCALE	DATE	
1302_PL009	-	GS
DWG. NO.	REVISION	CHECKED