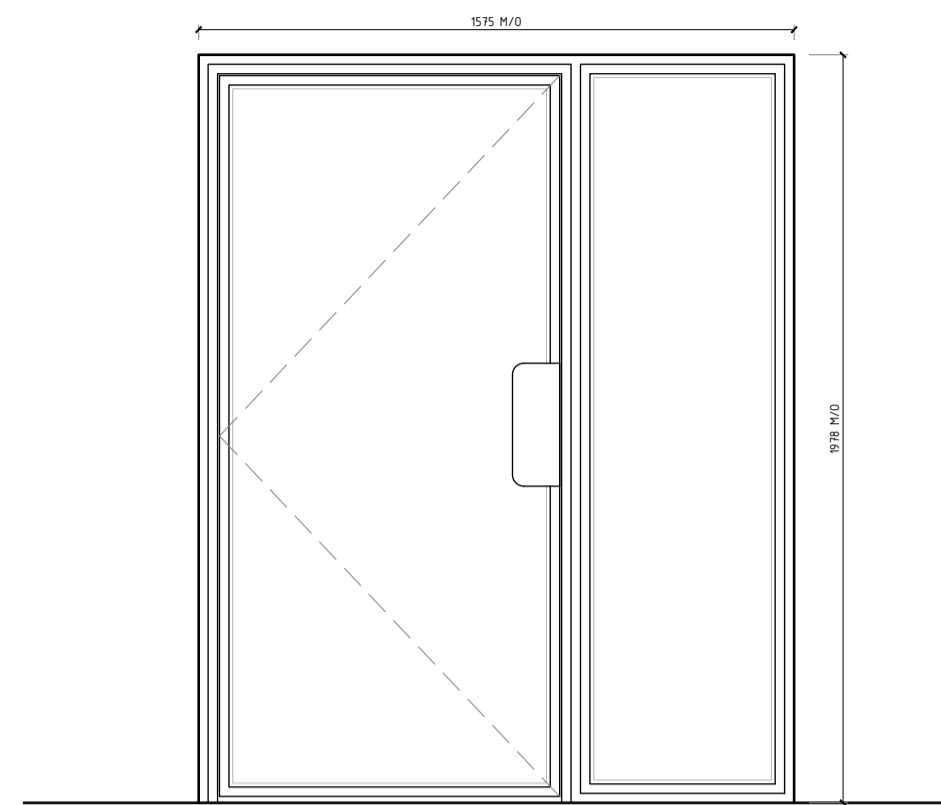
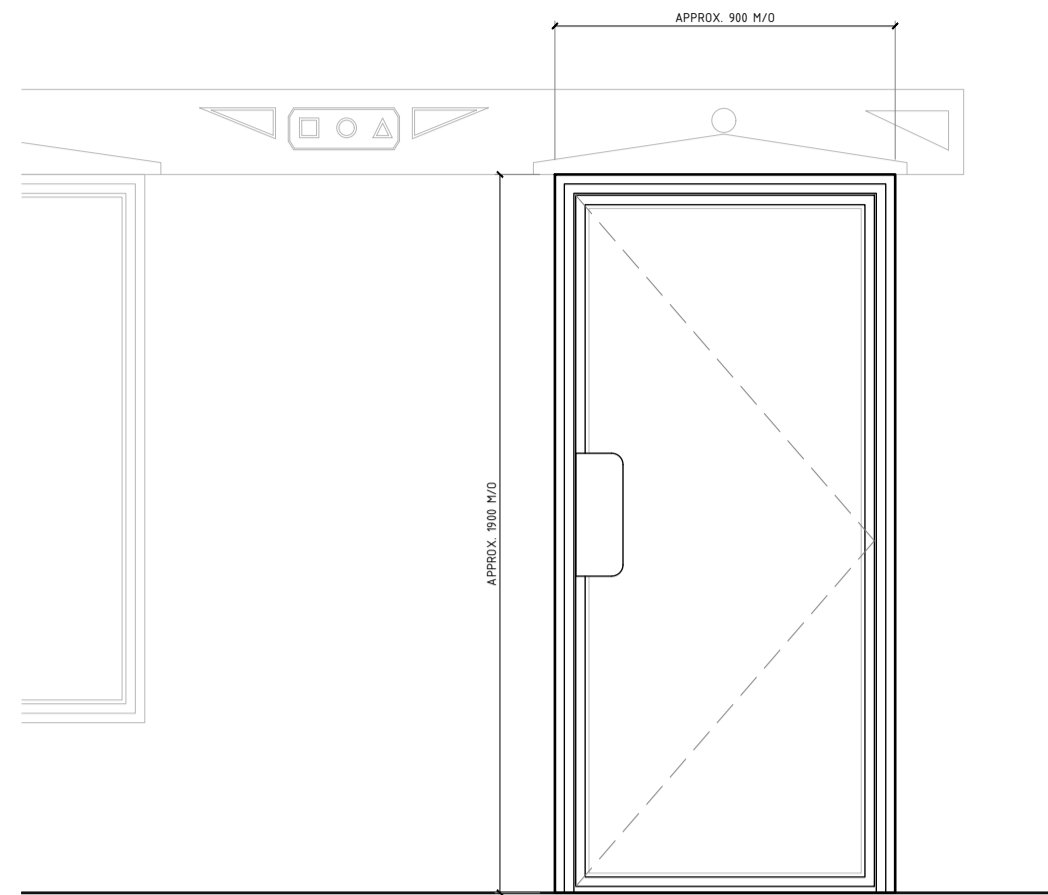


Do not scale off this drawing. Work to figured dimensions any discrepancy to be reported to the Architects. Refer to larger scale drawings where available.



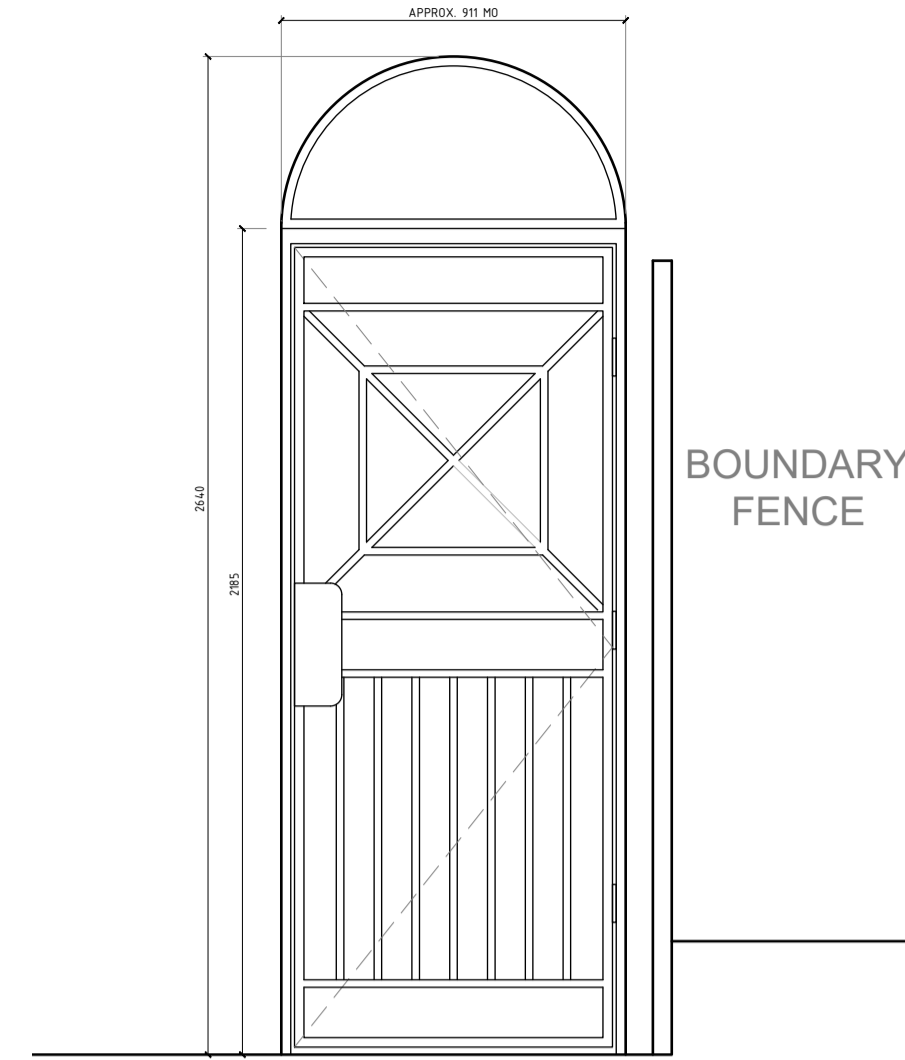
**DR-01 - NORTH SIDE EXTENSION ENTRANCE DOOR**

**SPECIFICATION:**  
 NEW FACTORY FINISHED W30 PROFILE POLYESTER POWDER COATED STEEL GLAZED DOOR WITH SIDE SCREEN.  
 ARBOKOL AG1 1 PART POLYSULPHIDE SEALANT TO PERIMETER OF FRAMES/STONE.  
 DRAUGHT SEALS (TO BS 6375-1:2009) SET INTO STEEL CLOSING PLATES FIXED TO FRAME.  
 GLAZED WITH 24mm SEALED DOUBLE GLAZED UNITS 6-12-6 MANUFACTURED IN ACCORDANCE WITH BS EN 1279-2, GAS FILLED CAVITY, TO GIVE MAXIMUM U/1 SWMPK. INNER PANE TO BE LOW-E GLASS FACTORY GLAZED USING DRY GLAZING SYSTEM WITH SECURITY DOUBLE SIDED ADHESIVE TAPE, TOUGHENED OUTER PANE.  
**FINISH: BLACK.**  
 TRICKLE VENTILATION TO TOP OF CASE  
 ALL DIMENSIONS TO BE CHECKED ON SITE PRIOR TO MANUFACTURE.  
 25X25 HW STRIP PACKER TO BOTH JAMBS TO FORM SHADOW GAP TO FRAME.



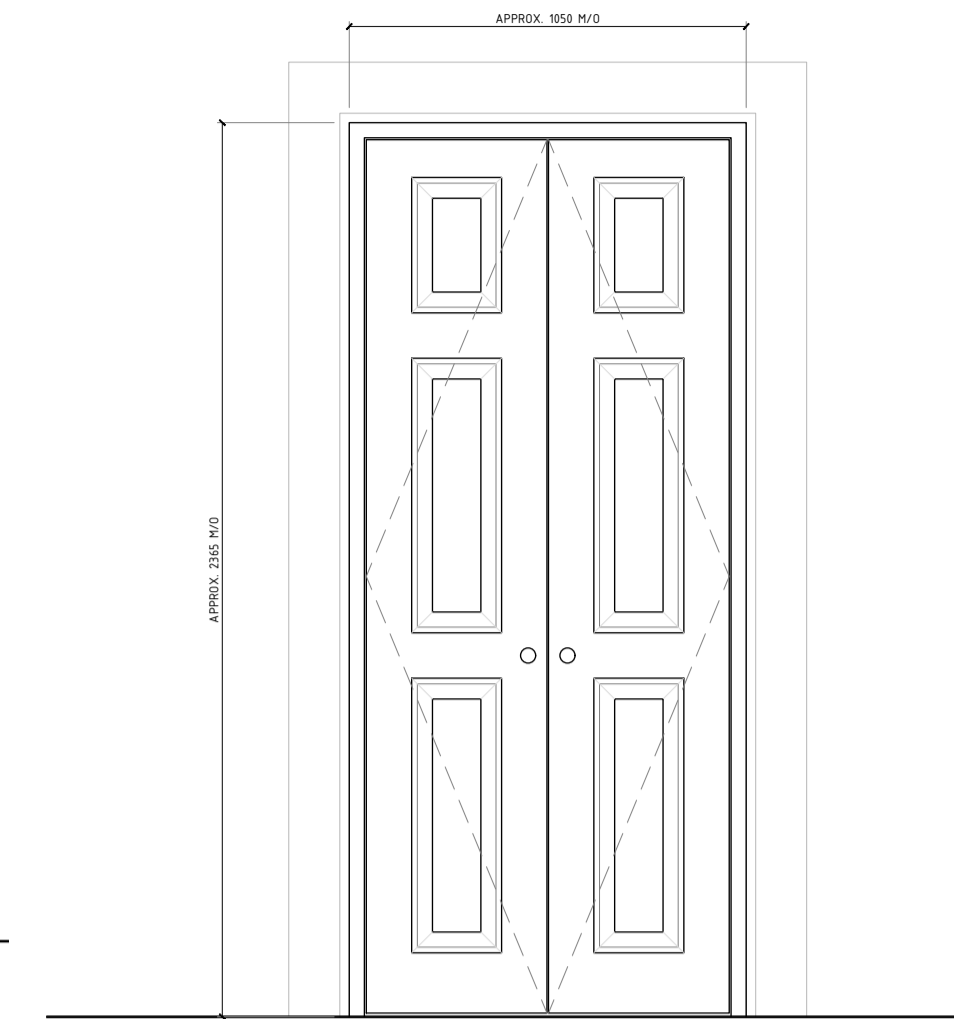
**DR-02 - INTERNAL DOOR TO NORTH SIDE EXTENSION / BREAKFAST ROOM**

**SPECIFICATION:**  
 NEW FACTORY FINISHED W30 PROFILE POLYESTER POWDER COATED STEEL GLAZED DOOR.  
 ARBOKOL AG1 1 PART POLYSULPHIDE SEALANT TO PERIMETER OF FRAMES/STONE.  
 DRAUGHT SEALS (TO BS 6375-1:2009) SET INTO STEEL CLOSING PLATES FIXED TO FRAME.  
 GLAZED WITH 24mm SEALED DOUBLE GLAZED UNITS 6-12-6 MANUFACTURED IN ACCORDANCE WITH BS EN 1279-2, GAS FILLED CAVITY, TO GIVE MAXIMUM U/1 SWMPK. INNER PANE TO BE LOW-E GLASS FACTORY GLAZED USING DRY GLAZING SYSTEM WITH SECURITY DOUBLE SIDED ADHESIVE TAPE, TOUGHENED OUTER PANE.  
**FINISH: BLACK.**  
 TRICKLE VENTILATION TO TOP OF CASE  
 ALL DIMENSIONS TO BE CHECKED ON SITE PRIOR TO MANUFACTURE.  
 25X25 HW STRIP PACKER TO BOTH JAMBS TO FORM SHADOW GAP TO FRAME.



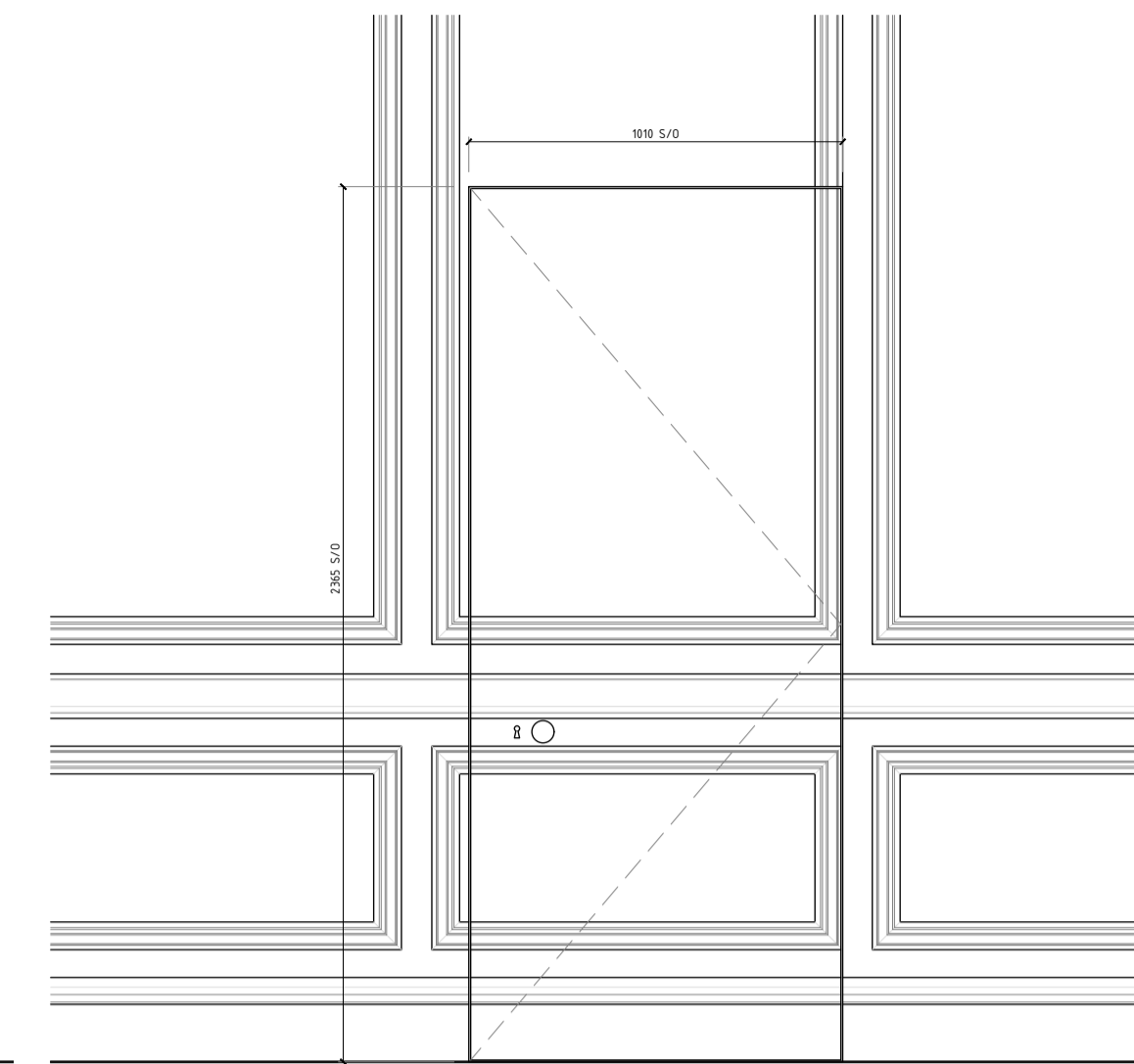
**DR-03 - GATE TO NORTH WALL**

**SPECIFICATION:**  
 NEW FACTORY FINISHED W30 PROFILE POLYESTER POWDER COATED STEEL GATE AND FRAME.  
 ARBOKOL AG1 1 PART POLYSULPHIDE SEALANT TO PERIMETER OF FRAMES/STONE.  
**FINISH: BLACK.**  
 ALL DIMENSIONS TO BE CHECKED ON SITE PRIOR TO MANUFACTURE.  
 25X25 HW STRIP PACKER TO BOTH JAMBS TO FORM SHADOW GAP TO FRAME.



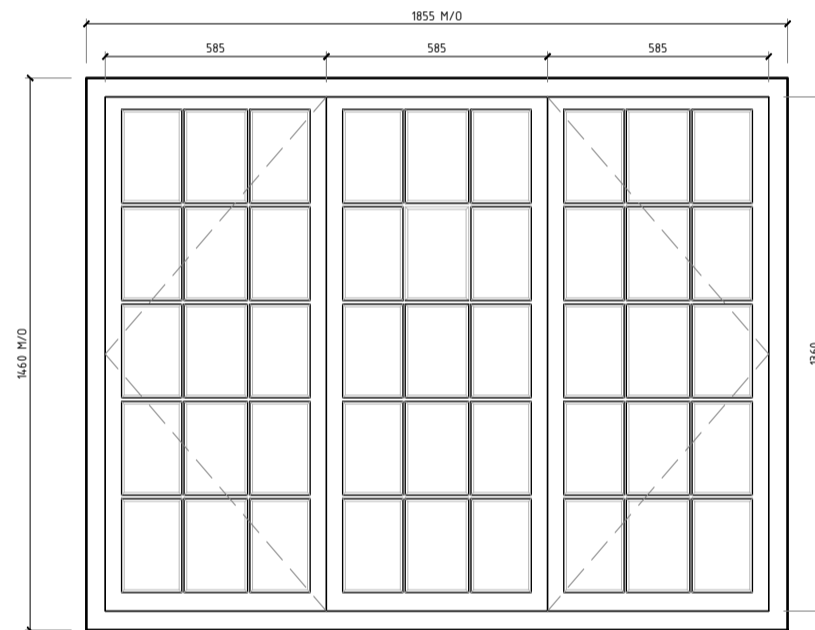
**DR-04 - INTERNAL TIMBER FRENCH DOORS TO DINING ROOM**

**SPECIFICATION:**  
 PAIR NEW 3 PANEL TIMBER FRENCH DOORS, 44mm THICK, SET WITH EXISTING STONE WINDOW SURROUND, RELOCATED TO ALIGN WITH WALL PANELS INTERNALLY.  
 ARBOKOL AG1 1 PART POLYSULPHIDE SEALANT TO PERIMETER OF FRAMES/STONE.  
**FINISH: PAINT FINISH TO MATCH EXISTING WINDOWS WITHIN HOST PROPERTY.**  
 IRONMONGERY: TBC  
 ALL DIMENSIONS TO BE CHECKED ON SITE PRIOR TO MANUFACTURE.



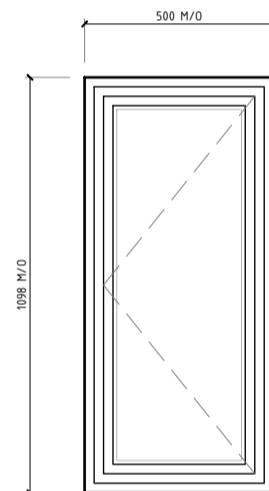
**DR-04 - DINING ROOM JIB DOOR TO BREAKFAST ROOM**

**SPECIFICATION:**  
 NEW JIB DOOR SET WITH INTERNAL TIMBER PANELING TO DINING ROOM WALL ON SECRET HINGES.  
**FINISH: PLASTER/TIMBER WITH PAINT FINISH AND PROFILES TO MATCH EXACTLY WITH SURROUNDING WALL. TIMBER FROM EXISTING DADO/SKIRTING/PANELING TO BE RE-USED WHERE POSSIBLE.**  
 IRONMONGERY: TBC  
 ALL DIMENSIONS TO BE CHECKED ON SITE PRIOR TO MANUFACTURE.  
 REFER TO ADDITIONAL DRAWINGS FOR INTERNAL ELEVATION TO DINING ROOM AND MODIFICATIONS TO TIMBER PANELING.



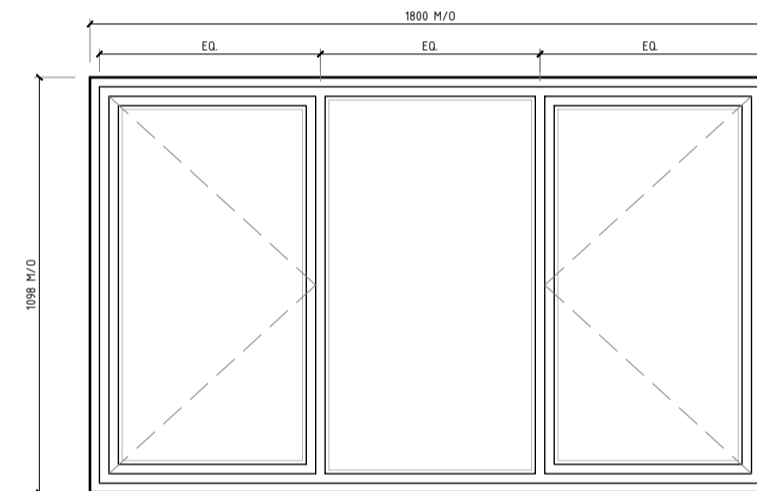
**WIN-01 - NEW TIMBER WINDOW - NORTH SIDE EXTENSION**

**SPECIFICATION:**  
 NEW TIMBER CASEMENT WINDOW TO CLOSELY MATCH ADJACENT KITCHEN WINDOW (AS EXISTING).  
 ARBOKOL AG1 1 PART POLYSULPHIDE SEALANT TO PERIMETER OF FRAMES/STONE.  
 GLAZED WITH 16mm SEALED THIN DOUBLE GLAZED UNITS 6-12-6 MANUFACTURED IN ACCORDANCE WITH BS EN 1279-2, GAS FILLED CAVITY, TO GIVE MAXIMUM U/1 SWMPK. INNER PANE TO BE LOW-E GLASS, TOUGHENED OUTER PANE. SPACER BARS TO BE BLACK.  
**FINISH: PAINT FINISH TO MATCH EXISTING TIMBER WINDOWS WITHIN HOST PROPERTY.**  
 TRICKLE VENTILATION TO TOP OF CASE  
 ALL DIMENSIONS TO BE CHECKED ON SITE PRIOR TO MANUFACTURE.



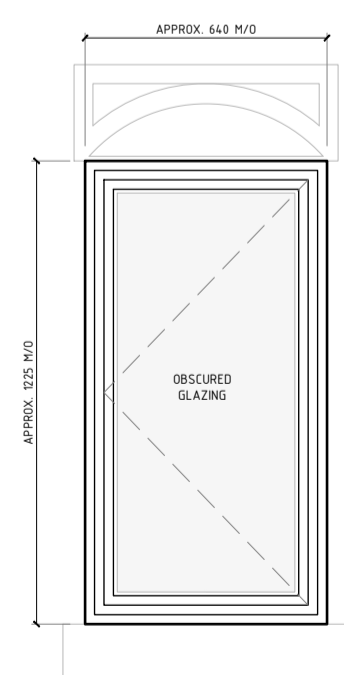
**WIN-02 - NEW STEEL WINDOW - NORTH SIDE EXTENSION**

**SPECIFICATION:**  
 NEW FACTORY FINISHED W30 PROFILE POLYESTER POWDER COATED STEEL WINDOW.  
 ARBOKOL AG1 1 PART POLYSULPHIDE SEALANT TO PERIMETER OF FRAMES/STONE.  
 GLAZED WITH 24mm SEALED DOUBLE GLAZED UNITS 6-12-6 MANUFACTURED IN ACCORDANCE WITH BS EN 1279-2, GAS FILLED CAVITY, TO GIVE MAXIMUM U/1 SWMPK. INNER PANE TO BE LOW-E GLASS FACTORY GLAZED USING DRY GLAZING SYSTEM WITH SECURITY DOUBLE SIDED ADHESIVE TAPE, TOUGHENED OUTER PANE.  
**FINISH: BLACK.**  
 ALL DIMENSIONS TO BE CHECKED ON SITE PRIOR TO MANUFACTURE.  
 25X25 HW STRIP PACKER TO BOTH JAMBS TO FORM SHADOW GAP TO FRAME.



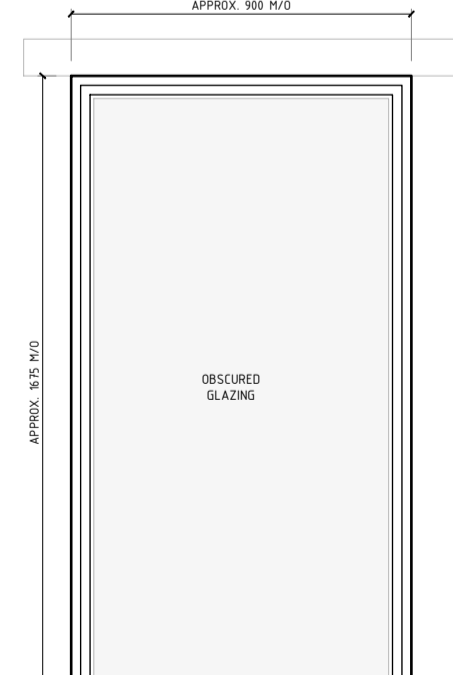
**WIN-03 - NEW STEEL WINDOW - NORTH SIDE EXTENSION**

**SPECIFICATION:**  
 NEW FACTORY FINISHED W30 PROFILE POLYESTER POWDER COATED STEEL WINDOW.  
 ARBOKOL AG1 1 PART POLYSULPHIDE SEALANT TO PERIMETER OF FRAMES/STONE.  
 GLAZED WITH 24mm SEALED DOUBLE GLAZED UNITS 6-12-6 MANUFACTURED IN ACCORDANCE WITH BS EN 1279-2, GAS FILLED CAVITY, TO GIVE MAXIMUM U/1 SWMPK. INNER PANE TO BE LOW-E GLASS FACTORY GLAZED USING DRY GLAZING SYSTEM WITH SECURITY DOUBLE SIDED ADHESIVE TAPE, TOUGHENED OUTER PANE.  
**FINISH: BLACK.**  
 ALL DIMENSIONS TO BE CHECKED ON SITE PRIOR TO MANUFACTURE.  
 25X25 HW STRIP PACKER TO BOTH JAMBS TO FORM SHADOW GAP TO FRAME.



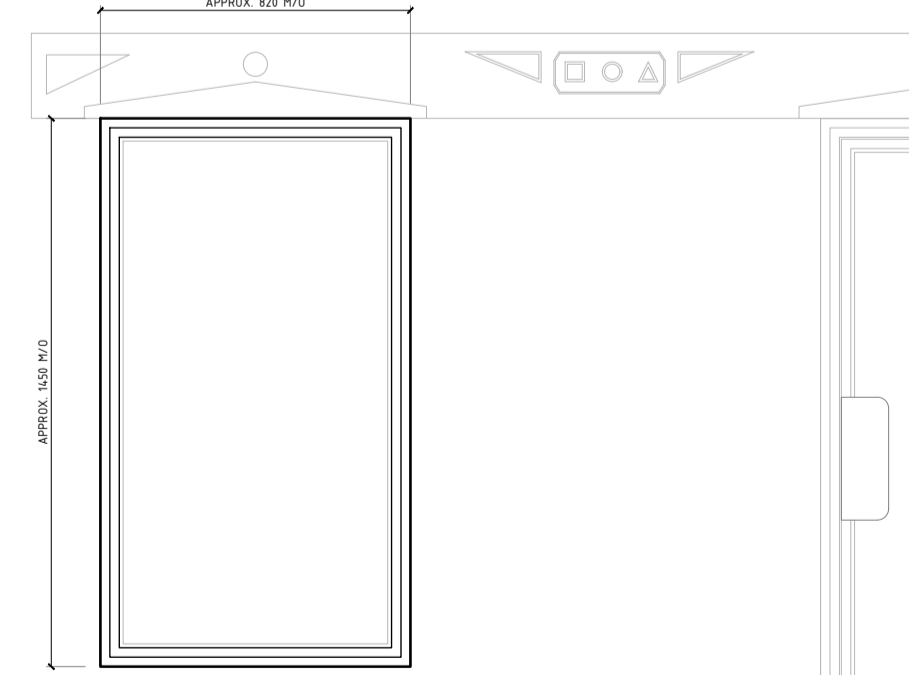
**WIN-03 - NEW STEEL WINDOW WITHIN EXISTING OPENING - NORTH SIDE EXTENSION**

**SPECIFICATION:**  
 NEW FACTORY FINISHED W30 PROFILE POLYESTER POWDER COATED STEEL WINDOW.  
 ARBOKOL AG1 1 PART POLYSULPHIDE SEALANT TO PERIMETER OF FRAMES/STONE.  
 GLAZED WITH 24mm SEALED DOUBLE GLAZED UNITS 6-12-6 MANUFACTURED IN ACCORDANCE WITH BS EN 1279-2, GAS FILLED CAVITY, TO GIVE MAXIMUM U/1 SWMPK. INNER PANE TO BE LOW-E GLASS FACTORY GLAZED USING DRY GLAZING SYSTEM WITH SECURITY DOUBLE SIDED ADHESIVE TAPE, TOUGHENED OUTER PANE.  
**OBSCURE GLAZING: ACID ETCH TO FACE 3, SOLID.**  
**FRAME FINISH: BLACK.**  
 ALL DIMENSIONS TO BE CHECKED ON SITE PRIOR TO MANUFACTURE.  
 25X25 HW STRIP PACKER TO BOTH JAMBS TO FORM SHADOW GAP TO FRAME.



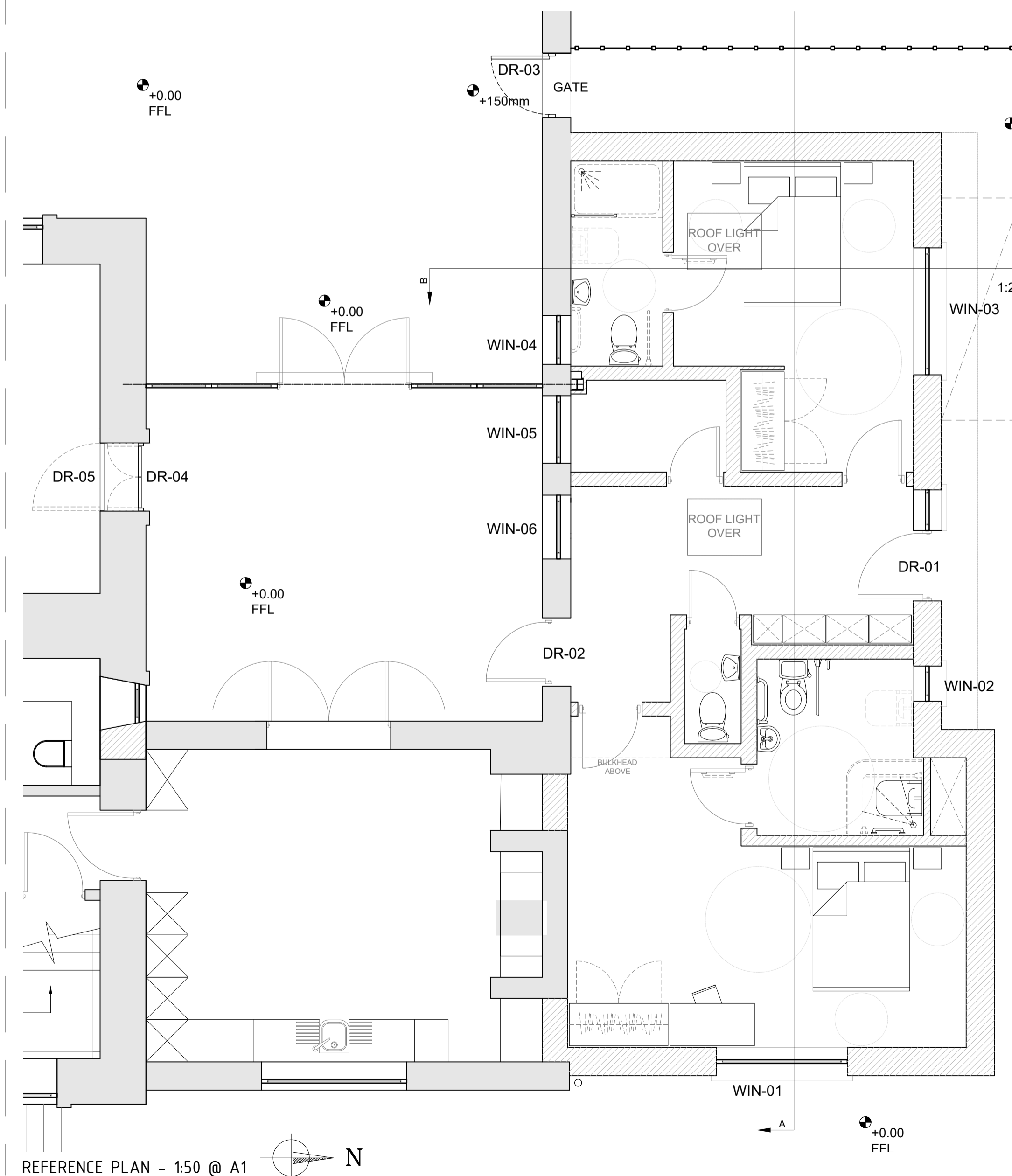
**WIN-03 - NEW STEEL WINDOW WITHIN EXISTING OPENING - NORTH SIDE EXTENSION**

**SPECIFICATION:**  
 NEW FACTORY FINISHED W30 PROFILE POLYESTER POWDER COATED STEEL WINDOW.  
 ARBOKOL AG1 1 PART POLYSULPHIDE SEALANT TO PERIMETER OF FRAMES/STONE.  
 GLAZED WITH 24mm SEALED DOUBLE GLAZED UNITS 6-12-6 MANUFACTURED IN ACCORDANCE WITH BS EN 1279-2, GAS FILLED CAVITY, TO GIVE MAXIMUM U/1 SWMPK. INNER PANE TO BE LOW-E GLASS FACTORY GLAZED USING DRY GLAZING SYSTEM WITH SECURITY DOUBLE SIDED ADHESIVE TAPE, TOUGHENED OUTER PANE.  
**OBSCURE GLAZING: ACID ETCH TO FACE 3, SOLID.**  
**FRAME FINISH: BLACK.**  
 ALL DIMENSIONS TO BE CHECKED ON SITE PRIOR TO MANUFACTURE.  
 25X25 HW STRIP PACKER TO BOTH JAMBS TO FORM SHADOW GAP TO FRAME.



**WIN-03 - NEW STEEL WINDOW WITHIN EXISTING OPENING - NORTH SIDE EXTENSION**

**SPECIFICATION:**  
 NEW FACTORY FINISHED W30 PROFILE POLYESTER POWDER COATED STEEL WINDOW.  
 ARBOKOL AG1 1 PART POLYSULPHIDE SEALANT TO PERIMETER OF FRAMES/STONE.  
 GLAZED WITH 24mm SEALED DOUBLE GLAZED UNITS 6-12-6 MANUFACTURED IN ACCORDANCE WITH BS EN 1279-2, GAS FILLED CAVITY, TO GIVE MAXIMUM U/1 SWMPK. INNER PANE TO BE LOW-E GLASS FACTORY GLAZED USING DRY GLAZING SYSTEM WITH SECURITY DOUBLE SIDED ADHESIVE TAPE, TOUGHENED OUTER PANE.  
**OBSCURE GLAZING: ACID ETCH TO FACE 3, SOLID.**  
**FRAME FINISH: BLACK.**  
 ALL DIMENSIONS TO BE CHECKED ON SITE PRIOR TO MANUFACTURE.  
 25X25 HW STRIP PACKER TO BOTH JAMBS TO FORM SHADOW GAP TO FRAME.



REFERENCE PLAN - 1:50 @ A1

Rev	By	Date	Revision Note
P01	JS	13.07.2020	Issued for Client Review

Client/Project  
**DARLEY CLIFFE HALL**  
 Upper Sheffield Road, Barnsley, S70 4PS

Extension & Alterations

Suitability - Stage  
**A2 - Planning**

Scale  
 1:20 @ A1

Drawn  
 JS

Checked/Date  
 TR JUN 2020

Drawing Title / Description  
**PROPOSED WINDOWS AND DOORS**

Proj. Ref. | Originat. | Volume | Level | Type | Role | Draw. Number | Suitab. | Revision  
**5177** | PBA | ZZ | GF | DR | A | (00)08 | A2 | P01

File Name  
 Copyright Pearce Bottomley LLP