



Royd Moor Road, Thurlstone

Highway Statement

August 2021

Project no. 1912

Paragon Highways
Unit 6 The Office Campus
Paragon Business Park, Red Hall Court
Wakefield WF1 2UY

☎ 01924 291536

✉ mail@paragonhighways.com
paragonhighways.com



Quality Management

	First Issue	Revision 1	Revision 2	Revision 3
Remarks	Final Report	A		
Date	April 2021	August 2021		
Prepared by	CH	JJH		
Checked by	LJO	LJO		

This document is issued for the party which commissioned it and for specific purposes connected with the above-captioned project only. It should not be relied upon by any other party or used for any other purpose.

We accept no responsibility for the consequences of this document being relied upon by any other party, or being used for any other purpose, or containing any error or omission which is due to an error or omission in data supplied to us by other parties.

This document should not be shown to other parties without consent from us and from the party which commissioned it.

Contents

1.0	Introduction	4
2.0	Existing Situation	5
3.0	Development Proposals	8
4.0	Transport Sustainability	9
5.0	Transport Policy	12
6.0	Traffic Impact	15
7.0	Conclusion	16

Appendices

Appendix A	Site Location Plan
Appendix B	Cycle and Pedestrian Catchment Plan
Appendix C	Development Proposals
Appendix D	Bus Route Map

1.0 Introduction

- 1.1.1 Paragon Highway Consultants have been appointed to prepare this Highway Statement relating to the proposed replacement of the existing stable block with a single 1-bed residential dwelling on land off Royd Moor Road in the settlement of Thurlstone, near Barnsley in South Yorkshire. Appendix A shows the site location in relation to the regional and local highway network.
- 1.1.2 The site currently comprises of an L-shaped stable block with an adjacent paddock.
- 1.1.3 The development will comprise of a detached residential dwelling in the shape of the original stable block with associated amenity space, parking and turning facilities with highway improvements.
- 1.1.4 This Highway Statement considers such matters as access, sustainability, car parking and servicing and presents the proposals in relation to current guidance and data. The traffic impact associated with the current development proposals is also presented.

2.0 Existing Situation

2.1.1 Site Description

2.1.2 The application site is located on the outskirts of the settlement of Thurlstone, approximately 12.6km to the west of the large town of Barnsley. The site is accessed directly off Royd Moor Road via an existing vehicular access located to the east of the site.

2.1.3 There are open fields to the north, east and west of the development site with Royd Moor Road to the south. The settlement of Thurlstone is situated less than 700 metres to the east.

2.1.4 The development proposals can be seen at Appendix C.

2.1.5 Local Highway Network

2.1.6 The proposed dwelling will continue to be accessed from an improved vehicular access onto Royd Moor Road. The existing access measures some 3.2 metres in width and will be surfaced with crushed limestone or similar.



Photograph 1: Existing vehicular access

2.1.7 Royd Moor Road is a country lane averaging some 3.8 metres in width in and around the site frontage. There are no footways, however, the highway is exceptionally lightly trafficked with approximately 2-3 cars every 30 minutes or so utilising the route. There are no street lighting columns, and the speed limit is set at the national limit, however, due to the highway layout vehicle speeds are estimated to be 20 - 25 mph or less.

2.1.8 Royd Moor Road runs from Towngate to the east to Royd Lane to the west a distance of approximately 2.1km. Royd Moor Road joins Royd Lane via a simple priority junction with Give Way markings. The photograph below shows Royd Moor Lane close to the site frontage.



Photograph 2: Site frontage (eastbound)



Photograph 3: Site frontage (westbound)

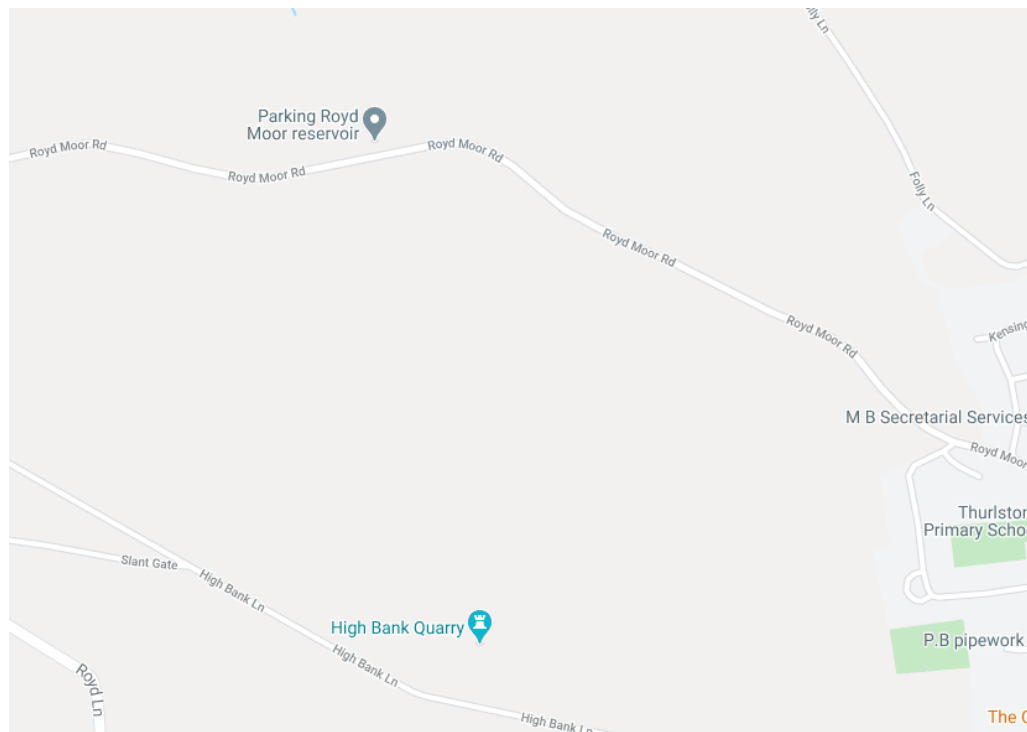
2.1.9 In the west, Towngate runs for approximately 142 metres in a southerly direction and connects to the A628 Manchester Road via an acute angled simple priority junction. The A628 Manchester Road provides connections to Greater Manchester, the Peak District National Park, Derbyshire and Barnsley, as well as providing a link to the M1 via Junction 37.

2.1.10 Road Traffic Accidents

2.1.11 The information available on the Crashmap website is approved by the National Statistics Authority and reported on by the Department for Transport. The search area included the full length of Royd Moor Road and has identified that no recorded injury accidents have occurred. The study period includes the 5-year period up to December 2020.

2.1.12 The accident injury record, therefore, does not indicate a road safety problem or any trends of significance which would warrant treatment or be a cause for concern as a result of the slight change in peak hour flows as a result of the development of the site for residential purposes.

2.1.13 The accident search area extract from the Crashmap website can be found below.



3.0 Development Proposals

3.1.1 Proposed Development

3.1.2 The proposals are to replace the existing stables with a single 1-bed detached dwelling much in the style of the existing building. The current vehicular access to the development site is to be maintained and improved with internal parking and a turning facility which will permit access and turning for a large vehicle such as a fire appliance.

3.1.3 The development will include for the provision of a passing place on Royd Moor Road located to the east of the existing site entrance. This will provide a much-needed facility along Royd Moor Road.

3.1.4 Access

3.1.5 The site will be accessed via the current arrangement off Royd Moor Road with improvements made to the running surface.

3.1.6 The initial 5 metres of the access can be hard surfaced if required by the LPA.

3.1.7 Parking Provision

3.1.8 Parking spaces will be provided in accordance with guidelines set out by Barnsley Metropolitan Borough Council. In this instance, 2 spaces will be adequate for a dwelling with 1 bedroom.

3.1.9 An EVC point will be provided as part of the development proposals.

4.0 Transport Sustainability

4.1.1 Walking

4.1.2 The preferred maximum walking distance of 2km are shown on the plan at Appendix B. The site is well placed for residents to walk to the centre of Thurlstone, Ingbirchwood and parts of nearby Millhouse Green. Within Thurlstone there is a pre-school, a primary school, bakery, public houses, takeaway pizza shop, places of worship and a large supermarket with ATM services. There are also numerous small local businesses, providing services and employment opportunities.

4.1.3 There are no formal footways along Royd Moor Road until the highway reaches the village of Thurlstone, approximately 540 metres to the east. However, there are grass verges to both sides of the highway which will provide a suitable stepping off point in the unlikely event that pedestrians meet an oncoming vehicle.

4.1.4 Cycling

4.1.5 The catchment plan at Appendix B also shows the 5km cycle catchment area from the site. This plan demonstrates that there are significant levels of commercial and service centre areas within the catchment area, providing existing potential for residents to cycle from the proposed development to their place of work or for recreational purposes.

4.1.6 The cycle catchment includes settlements such as Penistone, Millhouse Green, Hoylandswaine and Ingbirchwood. These settlements contain supermarkets, retail, primary care facilities and employment opportunities.

4.1.7 There are two National Cycle Network Routes in the vicinity of the development site. Route No.62 runs from Fleetwood to Hutton, south of Preston, and continues along the coast via Blackpool and Lytham St Anne's. It then begins again at Southport, through Liverpool and into Runcorn, Hadfield, Longdendale, Woodhead, Doncaster and Selby. Route No.627 connects Kirkburton to Millhouse Green and the TransPennine Trail via Shepley through the villages of Stocksmoor, Huddingley and Royd Moor. Both providing the opportunity for recreational cycling.

4.1.8 Public Transport

4.1.9 The nearest bus stop to the development site is located on Kensington Avenue, approximately 700 metres to the southeast of the development site, which is suitably located within the recommended walking distance for commuting of 2km. Further details regarding services from the stop are provided in the table below.

Service No.	Stop Location	Route	Frequency Mon – Sat	Frequency Lates & Sun
23	Kensington Avenue	Millhouse Green, Thurlstone, Shrewsbury, Penistone, Oxspring, Thurgoland, Wortley, Deepcar, Stocksbridge	4 x services per day at 10.24, 12.19, 14.19, 15.19	N/A N/A
25	Kensington Avenue	Penistone, Thurlstone, Millhouse Green, Shrewsbury Road, Spring Vale, Oxspring, Cubley (circular)	60 mins N/A	N/A N/A
25a	Kensington Avenue	Holmfirth Bus Station, Hade Edge, Dunford Bridge, Millhouse Green, Thurlstone, Penistone	1 x service at 13.53	N/A N/A

Table 1: Bus Services

4.1.10 As can be identified from the above table, there are 3 bus services that provide at least 1 service per hour to the local towns and settlements. These services provide connections to local employment and service centre areas. The bus services are considered to be suitable given the sites semi-rural location to provide an alternative to the private car in line with Government guidelines. A map for some of the bus routes can be found in Appendix D.

- 4.1.11 There is a railway station within cycling distance of the development site. Penistone Railway Station is situated 2.5km to the east of site and operates on the Huddersfield to Sheffield (Penistone Line). It also has the benefit of 16 cycle storage stands which are sheltered and covered by CCTV. There is also a car park with 15 spaces reserved for passengers using the rail services.
- 4.1.12 The site is considered to be in a sustainable location given its semi-rural location being relatively close to public transport links and in the vicinity of the settlements of Thurlstone, Penistone, Hoylandswaine, Millhouse Green and Ingbirchwood, all of which provide further local amenities, facilities and transport opportunities. Therefore, the site generally conforms to current Government directives for ensuring developments are located in a sustainable location.

5.0 Transport Policy

- 5.1.1 The site is considered to be in a reasonably sustainable position given its semi-rural location being within walking distance of bus services located to the east of the development site.
- 5.1.2 The National Planning Policy Framework (NPPF) was published in February 2019 and sets out the Government's planning policies for England and how these are expected to be applied. It recommends that developments should only be prevented or refused on highways grounds if there would be an unacceptable impact on highway safety, or the residual cumulative impacts on the road network would be **severe**. Within this context, applications for development with regards to Transport should:
- Consider the potential impacts of development on the transport network.
 - Provide opportunities to promote cycling, walking and public transport use are identified.
 - Patterns of movement, streets, parking and other transport considerations are integral to the design of schemes and contribute to making high quality places.
 - Include within the design for the charging of plug-in and ultra-low emission vehicles in safe and convenient locations.
- 5.1.3 The former guidance within PPG 13: Transport which is still useful as a reference, stated that, "Walking is the most important mode of travel at the local level and offers the greatest potential to replace short car trips, particularly under 2km."
- 5.1.4 With regards to Cycling, the former guidance in PPG 13: Transport stated that, "Cycling also has the potential to substitute for short car trips, particularly those under 5km, and to form part of a longer journey by public transport." The plan at Appendix B also shows the 5km cycle catchment area from the site. This demonstrates that there are significant levels of commercial and service centre areas within the catchment area, providing existing potential for residents to cycle from the proposed development to their place of work or for recreational purposes.

5.1.5 Barnsley Local Plan

5.1.6 The Barnsley Local Plan was adopted in January 2019 and details local planning policy for the future development of Barnsley up until the year 2033 and sets out the key elements of the planning framework for Barnsley.

5.1.7 Policy T1 relates to accessibility priorities and states the following points as priorities for transport:

- Improve sustainable transport and circulation in the Accessibility Improvement Zone (AIZ) area particularly between Principle Towns.
- Implement transport network improvements as supported by evidence from modelling, feasibility studies, consultation, surveys and community engagement, etc.
- Facilitate sustainable transport links to and from existing and proposed employment, interchange, community, leisure and tourism facilities in the borough, including provision for car parking and enhancing the non car role of the transport corridor shown on the Accessibility Priorities diagram as 'potential enhanced road based public transport corridor.'
- Improve direct public transport and freight links to London, Manchester, other Core cities, national / international interchanges and the Humber ports.

5.1.8 Policy T3 relates directly to new development and sustainable travel, with new developments expected to:

- Be located and designed to reduce the need to travel, be accessible to public transport and meet the needs of pedestrians and cyclists.
- Provide at least the minimum levels of parking for cycles, motorbikes, scooters, mopeds and disabled people set out in the relevant Supplementary Planning Document.

- 5.1.9 The development is located where access is available to public transport within the recognised maximum walking distance with access along a very low trafficked route which will have little or no impact upon pedestrian safety.

6.0 Traffic Impact

6.1.1 Existing Traffic

6.1.2 The site is currently used for the stabling of 4 horses, however, there are geese, ducks and chickens kept at the site. This necessitates that the site owners visit the site generally around 5 trips per day on average.

6.1.3 There are also regular visits to the site by farrier, vets and for the delivery of feedstuff.

6.1.4 Proposed Traffic

6.1.5 The development will be a modest detached dwelling with only 1 bedroom. A development of this size would have the capacity to generate a maximum of 1 trip during each of the network peak hours and a daily traffic generation that is generally comparable to its current use.

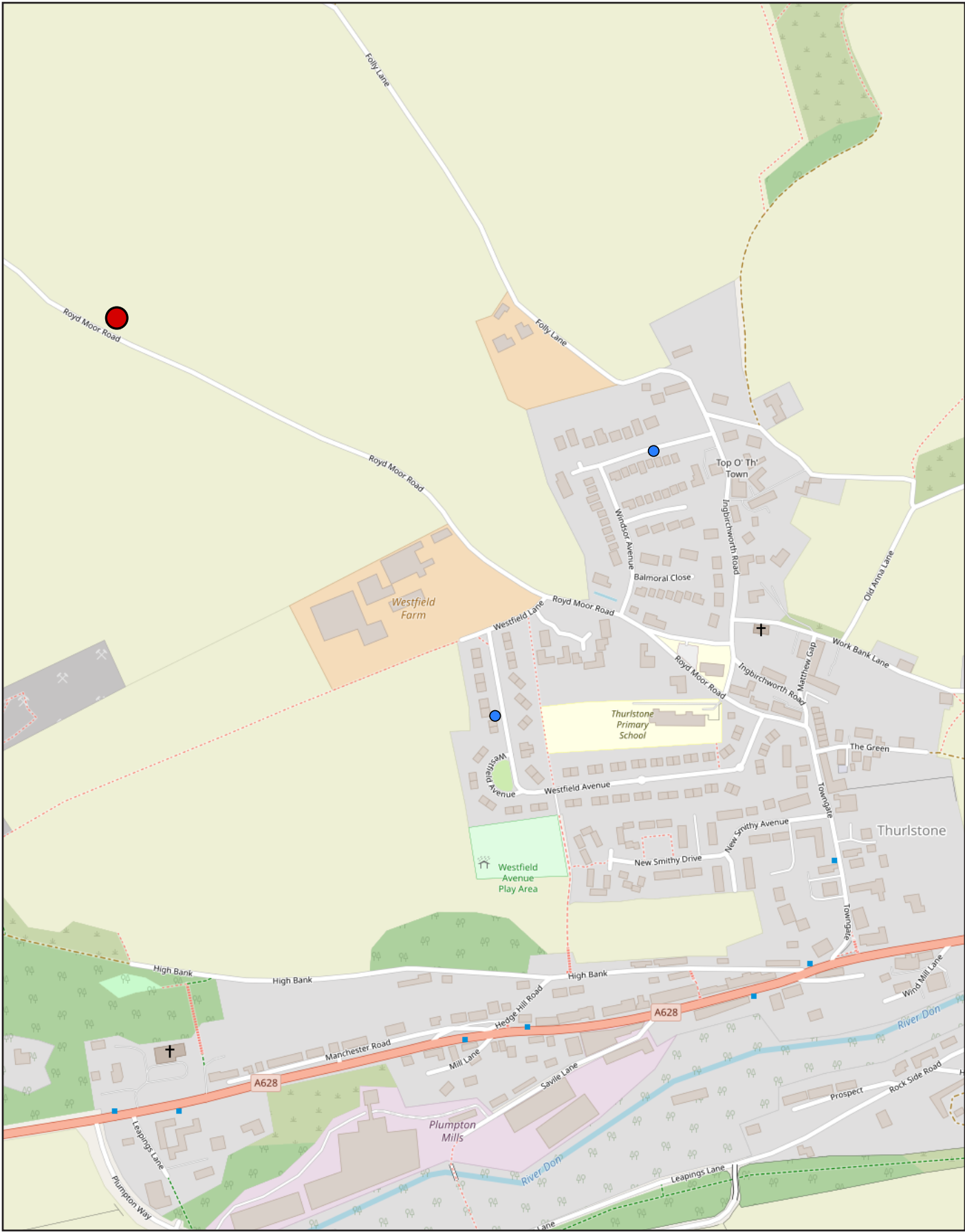
6.1.6 Therefore, the development will not result in any additional vehicle trips onto the local network and will not result in any detrimental impact upon highway safety.

7.0 Conclusion

- 7.1.1 This Highway Statement presents the existing traffic characteristics and infrastructure in the surrounding area of the proposed development. The development proposals are then presented. The traffic impact of the proposals is also assessed, and compares the traffic generations, highway safety and access proposals with the existing situation.
- 7.1.2 The development proposals will not result in an increase in vehicle trips to and from the site. The development will see an improvement to highway safety with the provision of a passing bay to the east of the site entrance.
- 7.1.3 The site is considered to be in a reasonably sustainable semi-rural location being relatively close to public transport links and in the vicinity of the settlements of Thurlstone, Millhouse Green, Penistone, Hoylandswaine and Ingbirchwood; all of which offer local amenities, facilities and further transport opportunities. Therefore, the site generally conforms to current Government directives for ensuring developments are located in a sustainable location.
- 7.1.4 It is considered that the anticipated level of traffic generated by the proposed development would not result in any increase in vehicle traffic above that currently generated by the existing stable block. Therefore, the level of traffic generated by the proposals can be easily accommodated and will have no material impact on the operation of the local highway.

Appendix A

Site Location Plan



Legend:

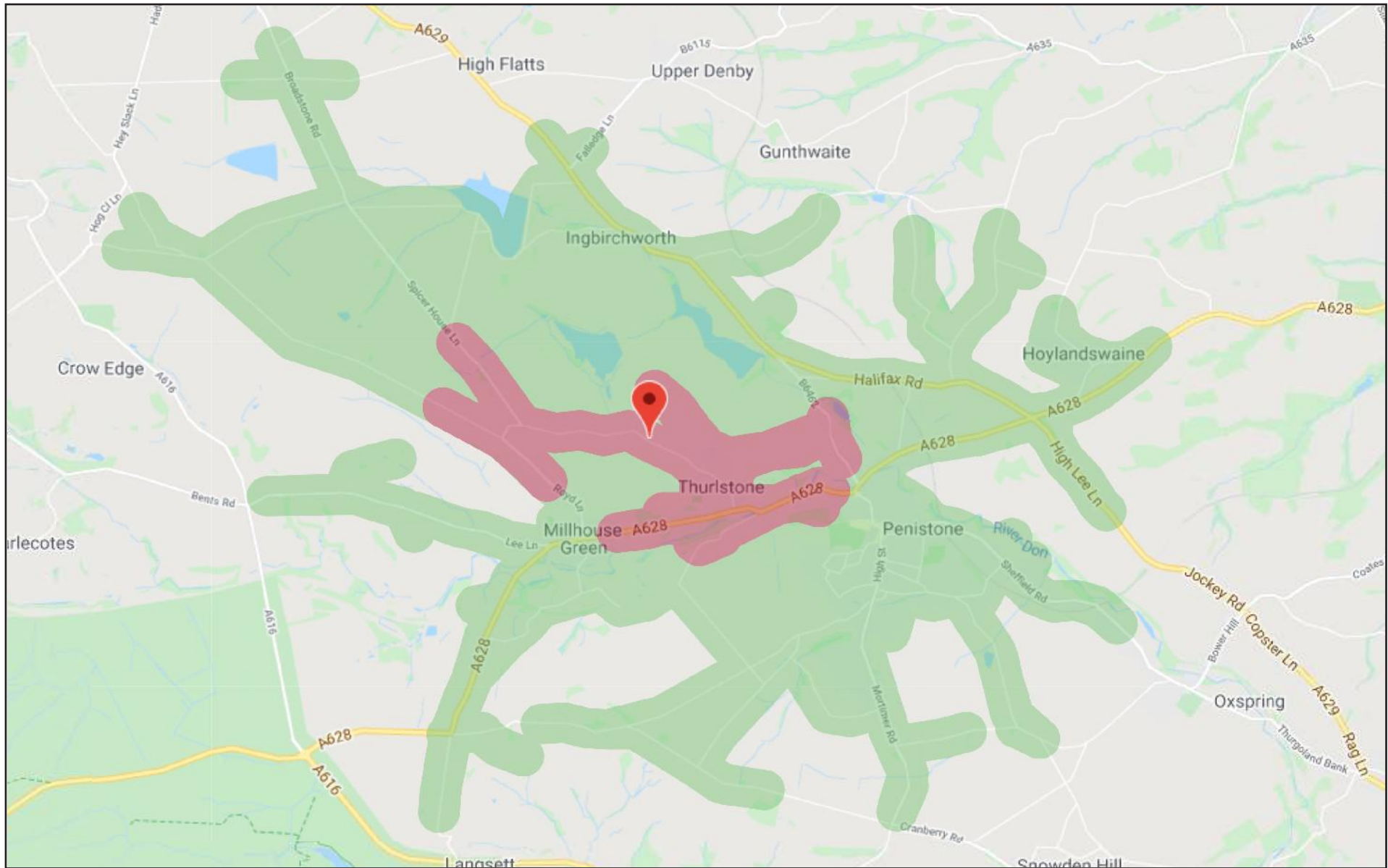
- Site Location
- Closest Unique Bus Stops



Unit 6 The Office Campus
 Paragon Business Park
 Wakefield Wf1 2uy

Appendix B

Cycle and Pedestrian Catchment Plan

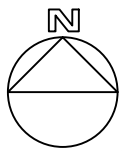


Legend:

- 5km Cycle Catchment
- 2km Walking Catchment
- Site Location

Appendix C

Development Proposals



GENERAL NOTES
This drawing shows the provisional design only and is subject to Local Authority approval. This drawing should not be scaled for setting out purposes unless specified.

This drawing is based on a topographical/ordnance survey provided by others.



HATCH KEY

	PROPOSED BITUMIN CONSTRUCTION
---	-------------------------------

B 14.04.2021 NEW LAYOUT RECIEVED

PROJECT
ROYD MOOR ROAD, THURLSTONE

TITLE
PASSING PLACE

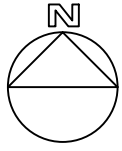
SCALE
1:200 @ A3

DRAWING
1912-101B

DATE
14.04.2021



PARAGON HIGHWAYS
UNIT 6, THE OFFICE CAMPUS,
PARAGON BUSINESS PARK, RED HALL COURT,
WAKEFIELD WF1 2UY
01924 291536 /
MAIL@PARAGONHIGHWAYS.COM



GENERAL NOTES
This drawing shows the provisional design only and is subject to Local Authority approval. This drawing should not be scaled for setting out purposes unless specified.

This drawing is based on a topographical/ordnance survey provided by others.



A 14.04.2021 NEW LAYOUT RECIEVED

PROJECT
ROYD MOOR ROAD, THURLSTONE

TITLE
VISIBILITY

SCALE
1:500 @ A3

DRAWING
1912-102

DATE
14.04.2021

PARAGON HIGHWAYS
PARAGON HIGHWAYS
UNIT 6, THE OFFICE CAMPUS,
PARAGON BUSINESS PARK, RED HALL COURT,
WAKEFIELD WF1 2UY
01924 291536 /
MAIL@PARAGONHIGHWAYS.COM

Appendix D

Bus Route Map



Bus service(s)

23 23a 24 24a

Valid from: 28 September 2020

Areas served

Barnsley (23a, 24, 24a)
Gilroyd (23a, 24, 24a)
Millhouse Green (23)
Penistone (23, 24, 24a)
Ingbirchworth (24)
Thurgoland
Crane Moor (23a, 24)
Wortley (23, 23a)
Deepcar (23, 23a)
Stocksbridge (23, 23a)

Places on the route

   Barnsley Interchange
 Barnsley Hospital
 Northern College
 Wortley Top Forge Industrial Museum
 Penistone Rail Station
 Fox Valley Shopping Centre

What's changed

Services 23 - From Monday 28 September the Monday to Friday journey at 1536 Millhouse Green - Deepcar runs on School Holidays only .

Services 23a and 24 - No changes.

Service 24a - From Tuesday 1 September reinstatement of TM Travel journeys following Covid reduction in service.

Operator(s)



Some journeys operated
with financial support from
South Yorkshire Passenger
Transport Executive



How can I get more information?



[TravelSouthYorkshire](#)



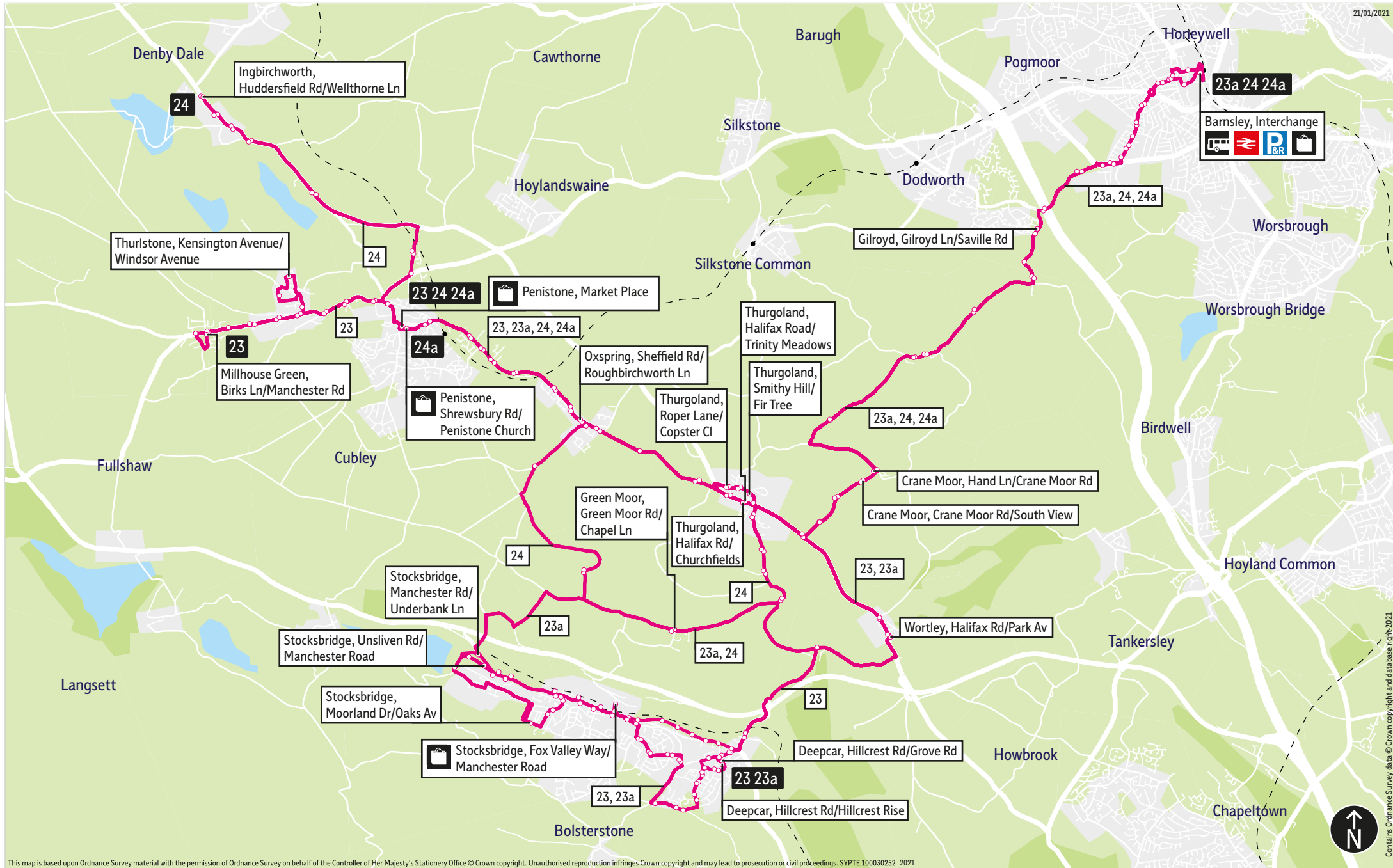
[@TSYalerts](#)



[01709 51 51 51](tel:01709 51 51 51)

Bus route map for services 23, 23a, 24 and 24a

21/01/2021



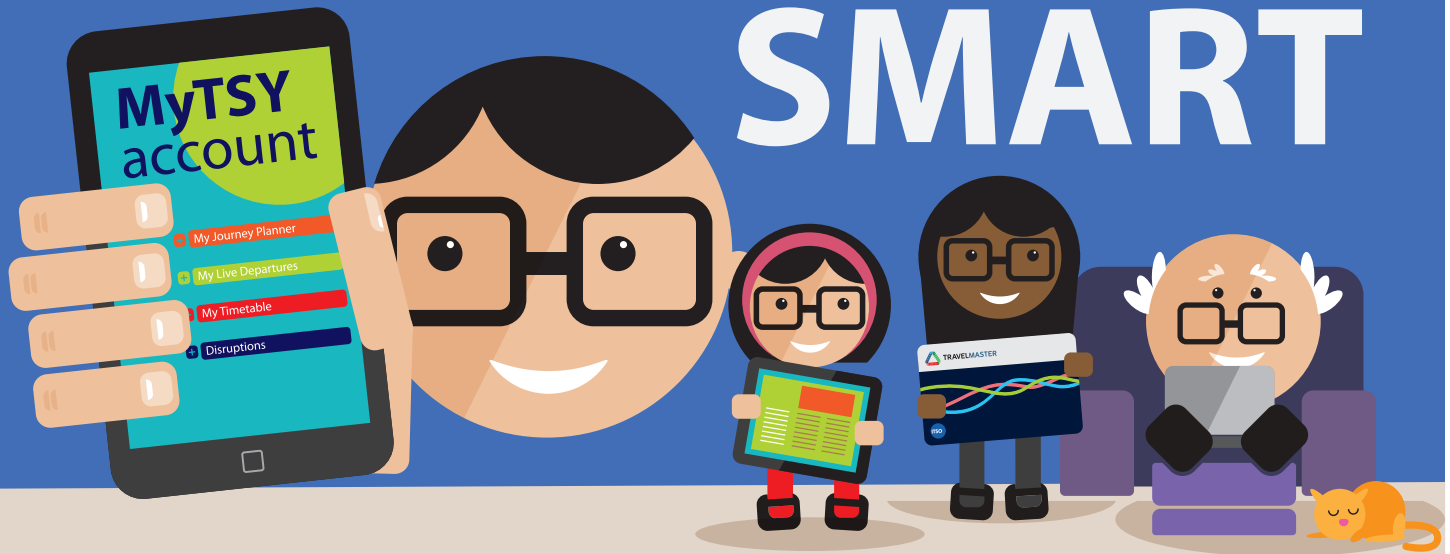
This map is based upon Ordnance Survey material with the permission of Ordnance Survey on behalf of the Controller of Her Majesty's Stationery Office © Crown copyright. Unauthorised reproduction infringes Crown copyright and may lead to prosecution or civil proceedings. SYPTE100030252 2021

= Terminus point
 = Public transport
 = Shopping area
 = Bus route & stops
 = Rail line & station
 = Tram route & stop

Contains Ordnance Survey data © Crown copyright and database right 2021



LET'S ALL GET SMART



Sign-up for a MyTSY account

for personalised travel information at home or on the move.



travelsouthyorkshire.com

'GET SMART'



Stopping points for service 23

Millhouse Green, Birks Lane ▶ Manchester Road ▶ **Thurlstone** ▶ Manchester Road ▶ Thurlstone Road ▶ **Penistone** ▶ Bridge Street ▶ Shrewsbury Road ▶ Sheffield Road ▶ **Spring Vale** ▶ **Oxspring** ▶ **Thurgoland** ▶ Thurgoland Bank ▶ Roper Lane ▶ Smithy Hill ▶ Halifax Road ▶ **Wortley** ▶ Penistone Road ▶ Halifax Road ▶ **Deepcar** ▶ Wortley Road ▶ Carr Road ▶ Hillcrest Road ▶ Helliwell Lane ▶ Royd Lane ▶ Wood Royd Road ▶ Armitage Road ▶ Lee Avenue ▶ Nanny Hill ▶ Fox Valley Way ▶ Manchester Road ▶ Park Drive Way ▶ Park Drive ▶ Sitwell Avenue ▶ Moorland Drive ▶ Smithy Moor Lane ▶ **Stocksbridge, Unsliven Road**

Stocksbridge, Unsliven Road ▶ Manchester Road ▶ Fox Valley Way ▶ Nanny Hill ▶ Lee Avenue ▶ **Deepcar** ▶ Armitage Road ▶ Wood Royd Road ▶ Royd Lane ▶ Helliwell Lane ▶ Hillcrest Road ▶ Carr Road ▶ Wortley Road ▶ **Wortley** ▶ Finkle Street Lane ▶ Halifax Road ▶ **Thurgoland** ▶ Smithy Hill ▶ Roper Lane ▶ Thurgoland Bank ▶ **Oxspring** ▶ Sheffield Road ▶ **Spring Vale** ▶ **Penistone** ▶ Market Place ▶ Thurlstone Road ▶ **Thurlstone** ▶ Towngate ▶ Kensington Avenue ▶ Westfield Avenue ▶ Manchester Road ▶ **Millhouse Green, Birks Lane**

23 ▶ Monday to Friday**Millhouse Green ▶ Stocksbridge**

See notes:

				SH	SD	SH
Millhouse Green, Birks Ln/Manchester Rd	0852	1034	1234	1430	1430	1536
Penistone, Market Place	-	-	-	-	1440	-
Penistone, Shrewsbury Rd/Penistone Church	0902	1044	1244	1440	-	1546
Oxspring, Sheffield Rd/Roughbirchworth Ln	0907	1049	1249	1445	-	1551
Thurgoland, Smithy Hill/Fir Tree	-	-	-	1455	-	-
Thurgoland, Roper Ln/Copster Cl	a. 0913	1055	1255	-	-	1557
Thurgoland, Roper Ln/Copster Cl	d. 0913	1057	1257	-	-	1559
Wortley, Halifax Rd/Park Av	-	1102	1302	-	-	1604
Deepcar, Hillcrest Rd/Grove Rd	-	1108	1308	-	-	1610
Stocksbridge, Fox Valley Way/Manchester Rd	0925	1118	1318	-	-	-
Stocksbridge, Moorland Dr/Oaks Av	0930	1123	1323	-	-	-
Stocksbridge, Unsliven Rd/Manchester Rd	0935	1128	1328	-	-	-

23 ▶ Monday to Friday**Stocksbridge ▶ Millhouse Green**

See notes:

				SH
Stocksbridge, Unsliven Rd/Manchester Rd	0937	1130	1330	-
Stocksbridge, Fox Valley Way/Manchester Rd	0942	1135	1335	-
Deepcar, Hillcrest Rd/Hillcrest Rise	0952	1145	1345	-
Wortley, Halifax Rd/Park Av	0959	1152	1352	-
Thurgoland, Smithy Hill/Fir Tree	1004	1157	1357	1457
Oxspring, Sheffield Rd/Roughbirchworth Ln	1009	1202	1402	1502
Penistone, Market Place	1017	1212	1412	1512
Thurlstone, Kensington Av	1024	1219	1419	1519
Millhouse Green, Birks Ln/Manchester Rd	1032	1227	1427	1527

23 ▶ Saturday**Millhouse Green ▶ Stocksbridge**

Millhouse Green, Birks Ln/Manchester Rd	0852	1034	1234	1430	1536
Penistone, Shrewsbury Rd/Penistone Church	0902	1044	1244	1440	1546
Oxspring, Sheffield Rd/Roughbirchworth Ln	0907	1049	1249	1445	1551
Thurgoland, Smithy Hill/Fir Tree	-	-	-	1455	-
Thurgoland, Roper Ln/Copster Cl	a. 0913	1055	1255	-	1557
Thurgoland, Roper Ln/Copster Cl	d. 0913	1057	1257	-	1559
Wortley, Halifax Rd/Park Av	-	1102	1302	-	1604
Deepcar, Hillcrest Rd/Grove Rd	-	1108	1308	-	1610
Stocksbridge, Fox Valley Way/Manchester Rd	0925	1118	1318	-	-
Stocksbridge, Moorland Dr/Oaks Av	0930	1123	1323	-	-
Stocksbridge, Unsliven Rd/Manchester Rd	0935	1128	1328	-	-

23 ▶ Saturday**Stocksbridge ▶ Millhouse Green**

Stocksbridge, Unsliven Rd/Manchester Rd	0937	1130	1330	-
Stocksbridge, Fox Valley Way/Manchester Rd	0942	1135	1335	-
Deepcar, Hillcrest Rd/Hillcrest Rise	0952	1145	1345	-
Wortley, Halifax Rd/Park Av	0959	1152	1352	-
Thurgoland, Smithy Hill/Fir Tree	1004	1157	1357	1457
Oxspring, Sheffield Rd/Roughbirchworth Ln	1009	1202	1402	1502
Penistone, Market Place	1017	1212	1412	1512
Thurlstone, Kensington Av	1024	1219	1419	1519
Millhouse Green, Birks Ln/Manchester Rd	1032	1227	1427	1527

No Service Sunday

Notes: SH - School Holidays Only, SD - Schooldays Only, a. - Arrival time, d. - Departure time

The information shown is correct at the time of production and is subject to change.

Stopping points for service 23a

Barnsley, Interchange ▶ Eldon Street ▶ Shambles Street ▶ Racecommon Road ▶ **Kingstone** ▶ Park Road ▶ Keresforth Hill Road ▶ **Gilroyd** ▶ Gilroyd Lane ▶ **Stainborough** ▶ Lowe Lane ▶ **Hood Green** ▶ Hood Green Road ▶ **Thurgoland** ▶ Hollin Moor Lane ▶ **Crane Moor** ▶ Hand Lane ▶ Crane Moor Road ▶ **Thurgoland** ▶ Halifax Road ▶ Roper Lane ▶ Smithy Hill ▶ Halifax Road ▶ **Wortley** ▶ Penistone Road ▶ Halifax Road ▶ **Green Moor** ▶ Green Moor Road ▶ **Stocksbridge** ▶ Unsliven Road ▶ Manchester Road ▶ Fox Valley Way ▶ Nanny Hill ▶ Lee Avenue ▶ Armitage Road ▶ Wood Royd Road ▶ Royd Lane ▶ Helliwell Lane ▶ **Deepcar, Hillcrest Road**

Deepcar, Hillcrest Road ▶ Helliwell Lane ▶ Royd Lane ▶ Wood Royd Road ▶ Armitage Road ▶ **Stocksbridge** ▶ Lee Avenue ▶ Nanny Hill ▶ Fox Valley Way ▶ Manchester Road ▶ Park Drive Way ▶ Park Drive ▶ Sitwell Avenue ▶ Moorland Drive ▶ Smithy Moor Road ▶ Unsliven Road ▶ Manchester Road ▶ **Green Moor** ▶ Green Moor Road ▶ **Wortley** ▶ Finkle Street Lane ▶ Halifax Road ▶ **Thurgoland** ▶ Smithy Hill ▶ Roper Lane ▶ Halifax Road ▶ **Crane Moor** ▶ Crane Moor Road ▶ Hand Lane ▶ **Thurgoland** ▶ Hollin Moor Lane ▶ **Hood Green** ▶ Hood Green Road ▶ **Stainborough** ▶ Lowe Lane ▶ Gilroyd Lane ▶ **Gilroyd** ▶ Keresforth Hill Road ▶ **Kingstone** ▶ Park Road ▶ Racecommon Road ▶ Shambles Street ▶ Regent Street ▶ **Barnsley, Interchange**

23a ▶ Monday to Friday

Barnsley Centre ▶ Deepcar

Barnsley, Interchange	1725
Gilroyd, Gilroyd Ln/Saville Rd	1736
Crane Moor, Hand Ln/Crane Moor Rd	1745
Thurgoland, Roper Ln/Copster Cl	1751
Wortley, Halifax Rd/Park Av	1756
Green Moor, Green Moor Rd/Chapel Ln	1802
Stocksbridge, Unsliven Rd/Manchester Rd	1809
Stocksbridge, Fox Valley Way/Manchester Rd	1814
Deepcar, Hillcrest Rd/Grove Rd	1822

23a ▶ Monday to Friday

Deepcar ▶ Barnsley Centre

Deepcar, Hillcrest Rd/Grove Rd	0720	1610
Stocksbridge, Fox Valley Way/Manchester Rd	0730	1620
Stocksbridge, Moorland Dr/Oaks Av	-	1624
Stocksbridge, Unsliven Rd/Manchester Rd	-	1630
Stocksbridge, Manchester Rd/Underbank Ln	0735	-
Green Moor, Green Moor Rd/Chapel Ln	0743	1638
Wortley, Halifax Rd/Park Av	0750	1645
Thurgoland, Smithy Hill/Fir Tree	0755	1650
Crane Moor, Hand Ln/Crane Moor Rd	0801	1656
Gilroyd, Gilroyd Ln/Saville Rd	0812	1705
Barnsley, Interchange	0825	1718

23a ▶ Saturday

Barnsley Centre ▶ Deepcar

Barnsley, Interchange	1725
Gilroyd, Gilroyd Ln/Saville Rd	1736
Crane Moor, Hand Ln/Crane Moor Rd	1745
Thurgoland, Roper Ln/Copster Cl	1751
Wortley, Halifax Rd/Park Av	1756
Green Moor, Green Moor Rd/Chapel Ln	1802
Stocksbridge, Unsliven Rd/Manchester Rd	1809
Stocksbridge, Fox Valley Way/Manchester Rd	1814
Deepcar, Hillcrest Rd/Grove Rd	1822

Deepcar, Hillcrest Rd/Grove Rd	0721 1610
Stocksbridge, Fox Valley Way/Manchester Rd	0731 1620
Stocksbridge, Moorland Dr/Oaks Av	- 1624
Stocksbridge, Unsliven Rd/Manchester Rd	- 1630
Stocksbridge, Manchester Rd/Underbank Ln	0735 -
Green Moor, Green Moor Rd/Chapel Ln	0743 1638
Wortley, Halifax Rd/Park Av	0751 1646
Thurgoland, Smithy Hill/Fir Tree	0756 1652
Crane Moor, Hand Ln/Crane Moor Rd	0802 1657
Gilroyd, Gilroyd Ln/Saville Rd	0812 1706
Barnsley, Interchange	0825 1718

No Service Sunday

Stopping points for service 24

Barnsley, Interchange ▶ Eldon Street ▶ Shambles Street ▶ Racecommon Road ▶ **Kingstone** ▶ Park Road ▶ Keresforth Hill Road ▶ **Gilroyd** ▶ Gilroyd Lane ▶ **Stainborough** ▶ Lowe Lane ▶ **Hood Green** ▶ Hood Green Road ▶ **Thurgoland** ▶ Hollin Moor Lane ▶ **Crane Moor** ▶ Hand Lane ▶ Crane Moor Road ▶ **Thurgoland** ▶ Halifax Road ▶ Roper Lane ▶ Smithy Hill ▶ Cote Lane ▶ **Green Moor** ▶ Forge Lane ▶ Green Moor Road ▶ Dean Head Lane ▶ **Oxspring** ▶ Roughbircworth Lane ▶ Sheffield Road ▶ **Spring Vale** ▶ **Penistone** ▶ Market Place ▶ Wellhouse Lane ▶ **Ingbirchworth, Huddersfield Road**

Ingbirchworth, Huddersfield Road ▶ **Penistone** ▶ Well House Lane ▶ Barnsley Road ▶ Bridge Street ▶ Shrewsbury Road ▶ Sheffield Road ▶ **Spring Vale** ▶ **Oxspring** ▶ Roughbircworth Lane ▶ **Green Moor** ▶ Dean Head Lane ▶ Green Moor Road ▶ Forge Lane ▶ **Thurgoland** ▶ Cote Lane ▶ Smithy Hill ▶ Roper Lane ▶ Halifax Road ▶ **Crane Moor** ▶ Crane Moor Road ▶ Hand Lane ▶ **Thurgoland** ▶ Hollin Moor Lane ▶ **Hood Green** ▶ Hood Green Road ▶ **Stainborough** ▶ Lowe Lane ▶ Gilroyd Lane ▶ **Gilroyd** ▶ Keresforth Hill Road ▶ **Kingstone** ▶ Park Road ▶ Racecommon Road ▶ Shambles Street ▶ St Marys Place ▶ Regent Street ▶ **Barnsley, Interchange**

Stopping points for service 24a

Barnsley, Interchange ▶ Eldon Street ▶ Shambles Street ▶ Racecommon Road ▶ **Kingstone** ▶ Park Road ▶ Keresforth Hill Road ▶ **Gilroyd** ▶ Gilroyd Lane ▶ **Stainborough** ▶ Lowe Lane ▶ **Hood Green** ▶ Hood Green Road ▶ **Thurgoland** ▶ Hollin Moor Lane ▶ **Crane Moor** ▶ Hand Lane ▶ Crane Moor Road ▶ **Thurgoland** ▶ Halifax Road ▶ Thurgoland Bank ▶ **Oxspring** ▶ Sheffield Road ▶ **Spring Vale** ▶ **Penistone, Market Place**

Penistone, Shrewsbury Road ▶ Sheffield Road ▶ **Spring Vale** ▶ **Oxspring** ▶ **Thurgoland** ▶ Thurgoland Bank ▶ Halifax Road ▶ **Crane Moor** ▶ Crane Moor Road ▶ Hand Lane ▶ **Thurgoland** ▶ Hollin Moor Lane ▶ **Hood Green** ▶ Hood Green Road ▶ **Stainborough** ▶ Lowe Lane ▶ Gilroyd Lane ▶ **Gilroyd** ▶ Keresforth Hill Road ▶ **Kingstone** ▶ Park Road ▶ Racecommon Road ▶ Shambles Street ▶ Regent Street ▶ **Barnsley, Interchange**

24, 24a ▶ Monday to Friday**Barnsley Centre ▶ Ingbirchworth**

Service number:	24	24	24	24	24	24	24a	24a
Operated by:	SSY	SSY	SSY	SSY	SSY	SSY	TM	TM
Barnsley, Interchange	0830	1030	1230	1430	1630	1830	2005	2235
Gilroyd, Gilroyd Ln/Saville Rd	0840	1040	1240	1440	1641	1839	2014	2244
Crane Moor, Crane Moor Rd/South View	-	-	-	-	-	-	2021	2251
Thurgoland, Halifax Rd/Churchfields	-	-	-	-	-	-	2026	2256
Crane Moor, Hand Ln/Crane Moor Rd	0848	1048	1248	1448	1650	1847	-	-
Thurgoland, Roper Ln/Copster Cl	a. 0855	1055	1255	1455	1657	1852	-	-
Thurgoland, Roper Ln/Copster Cl	d. 0857	1057	1257	1457	1659	1852	-	-
Green Moor, Green Moor Rd/Chapel Ln	0903	1103	1303	1503	1705	-	-	-
Oxspring, Sheffield Rd/Roughbirchworth Ln	0910	1110	1310	1510	1712	1858	-	-
Penistone, Market Place	0917	1117	1317	1517	1719	1903	2035	2305
Ingbirchworth, Huddersfield Rd/Wellthorne Ln	0925	1125	1325	1525	1727	1910	-	-

24, 24a ▶ Monday to Friday**Ingbirchworth ▶ Barnsley Centre**

Service number:	24	24	24	24	24	24	24	24a	24a
Operated by:	SSY	SSY	SSY	SSY	SSY	SSY	SSY	TM	TM
Ingbirchworth, Huddersfield Rd/Wellthorne Ln	0612	0930	1128	1328	1528	1730	1912	-	-
Penistone, Market Place	-	-	-	-	-	-	1920	1930	2200
Penistone, Shrewsbury Rd/Penistone Church	0620	0939	1139	1339	1539	1739	-	-	-
Oxspring, Sheffield Rd/Roughbirchworth Ln	0625	0945	1145	1345	1545	1745	-	-	-
Green Moor, Green Moor Rd/Chapel Ln	0631	0953	1153	1353	1553	1753	-	-	-
Thurgoland, Smithy Hill/Fir Tree	0638	0959	1159	1359	1559	1759	-	-	-
Thurgoland, Halifax Rd/Trinity Meadows	-	-	-	-	-	-	-	1937	2207
Crane Moor, Hand Ln/Crane Moor Rd	0643	1004	1204	1404	1604	1804	-	1944	2214
Gilroyd, Gilroyd Ln/Saville Rd	0651	1013	1213	1413	1613	1813	-	1952	2222
Barnsley, Interchange	0700	1025	1225	1425	1625	1823	-	2002	2232

24, 24a ▶ Saturday**Barnsley Centre ▶ Ingbirchworth**

Service number:	24	24	24	24	24	24
Operated by:	SSY	SSY	SSY	SSY	SSY	SSY
Barnsley, Interchange	0830	1030	1230	1430	1630	1830
Gilroyd, Gilroyd Ln/Saville Rd	0840	1040	1240	1440	1641	1839
Crane Moor, Crane Moor Rd/South View	-	-	-	-	-	-
Thurgoland, Halifax Rd/Churchfields	-	-	-	-	-	-
Crane Moor, Hand Ln/Crane Moor Rd	0849	1049	1249	1449	1650	1847
Thurgoland, Roper Ln/Copster Cl	a. 0855	1055	1255	1455	1657	1852
Thurgoland, Roper Ln/Copster Cl	d. 0857	1057	1257	1457	1659	1852
Green Moor, Green Moor Rd/Chapel Ln	0903	1103	1303	1503	1705	-
Oxspring, Sheffield Rd/Roughbirchworth Ln	0910	1110	1310	1510	1712	1858
Penistone, Market Place	0917	1117	1317	1517	1719	1903
Ingbirchworth, Huddersfield Rd/Wellthorne Ln	0925	1125	1325	1525	1727	1910

24, 24a ▶ Saturday**Ingbirchworth ▶ Barnsley Centre**

Service number:	24	24	24	24	24	24	24
Operated by:	SSY	SSY	SSY	SSY	SSY	SSY	SSY
Ingbirchworth, Huddersfield Rd/Wellthorne Ln	0700	0930	1128	1328	1528	1730	1912
Penistone, Market Place	-	-	-	-	-	-	1920
Penistone, Shrewsbury Rd/Penistone Church	0709	0939	1139	1339	1539	1739	-
Oxspring, Sheffield Rd/Roughbirchworth Ln	0715	0945	1145	1345	1545	1745	-
Green Moor, Green Moor Rd/Chapel Ln	0721	0953	1153	1353	1553	1753	-
Thurgoland, Smithy Hill/Fir Tree	0728	0959	1159	1359	1559	1759	-
Thurgoland, Halifax Rd/Trinity Meadows	-	-	-	-	-	-	-
Crane Moor, Hand Ln/Crane Moor Rd	0733	1004	1204	1404	1604	1804	-
Gilroyd, Gilroyd Ln/Saville Rd	0741	1013	1213	1413	1613	1813	-
Barnsley, Interchange	0750	1025	1225	1425	1625	1823	-

24a ▶ Sunday

Barnsley Centre ▶ Penistone

Service number:	24a	24a	24a	24a	24a	24a	24a
Operated by:	TM	TM	TM	TM	TM	TM	TM
Barnsley, Interchange	0935	1135	1405	1605	1805	2005	2235
Gilroyd, Gilroyd Ln/Saville Rd	0944	1144	1414	1614	1814	2014	2244
Crane Moor, Crane Moor Rd/South View	0951	1151	1421	1621	1821	2021	2251
Thurgoland, Halifax Rd/Churchfields	0956	1156	1426	1626	1826	2026	2256
Penistone, Market Place	1005	1205	1435	1635	1835	2035	2305

24a ▶ Sunday

Penistone ▶ Barnsley Centre

Service number:	24a	24a	24a	24a	24a	24a	24a
Operated by:	TM	TM	TM	TM	TM	TM	TM
Penistone, Market Place	0900	1100	1330	1530	1730	1930	2200
Thurgoland, Halifax Rd/Trinity Meadows	0907	1107	1337	1537	1737	1937	2207
Crane Moor, Hand Ln/Crane Moor Rd	0914	1114	1344	1544	1744	1944	2214
Gilroyd, Gilroyd Ln/Saville Rd	0922	1122	1352	1552	1752	1952	2222
Barnsley, Interchange	0932	1132	1402	1602	1802	2002	2232

Notes: a - Arrival time, d. - Departure time.

Operators: SSY - Stagecoach, TM - TM Travel

The information shown is correct at the time of production and is subject to change.

travelsouthyorkshire.com

Journey planner

Ticket finder

Live departures

Timetable finder

Disruptions

Travel South Yorkshire

travelsouthyorkshire.com

Take Control on your mobile