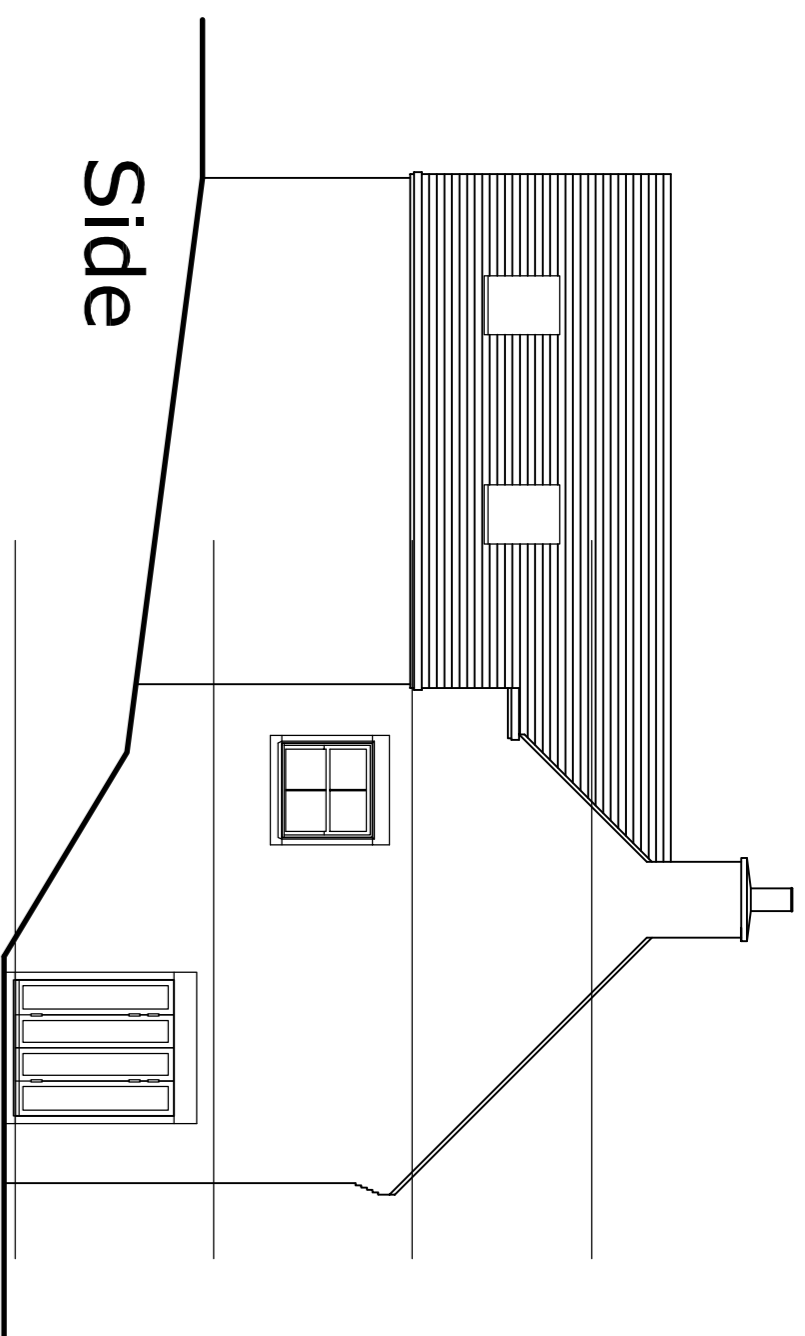
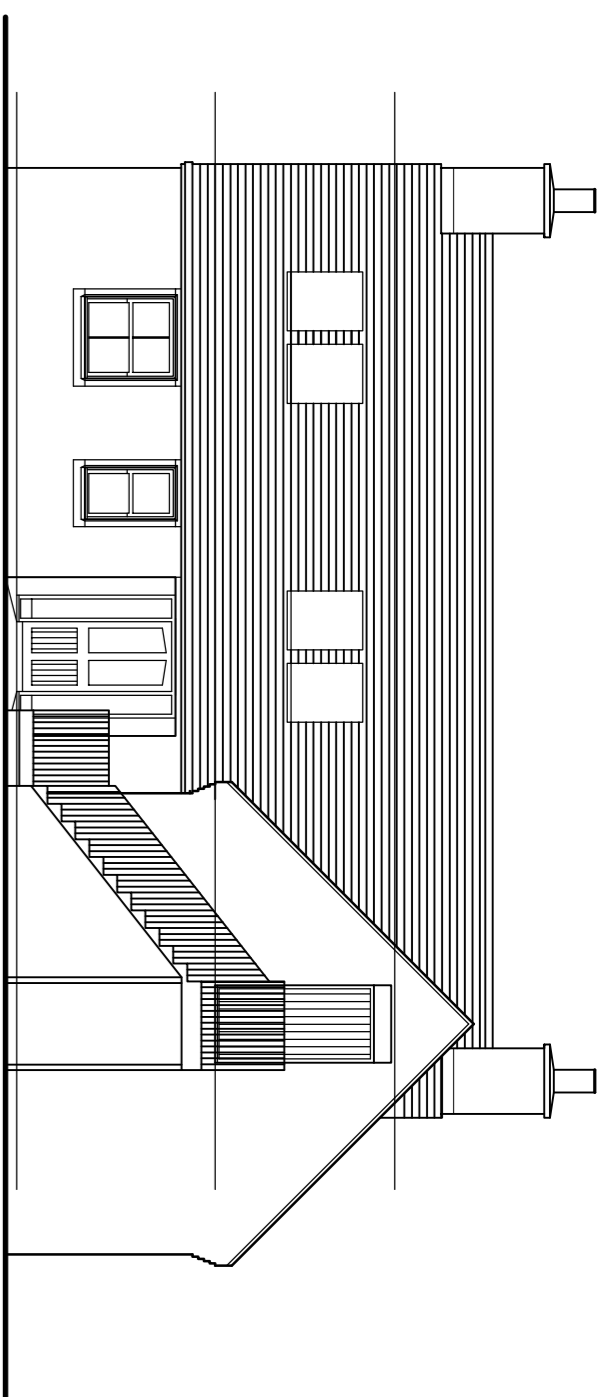


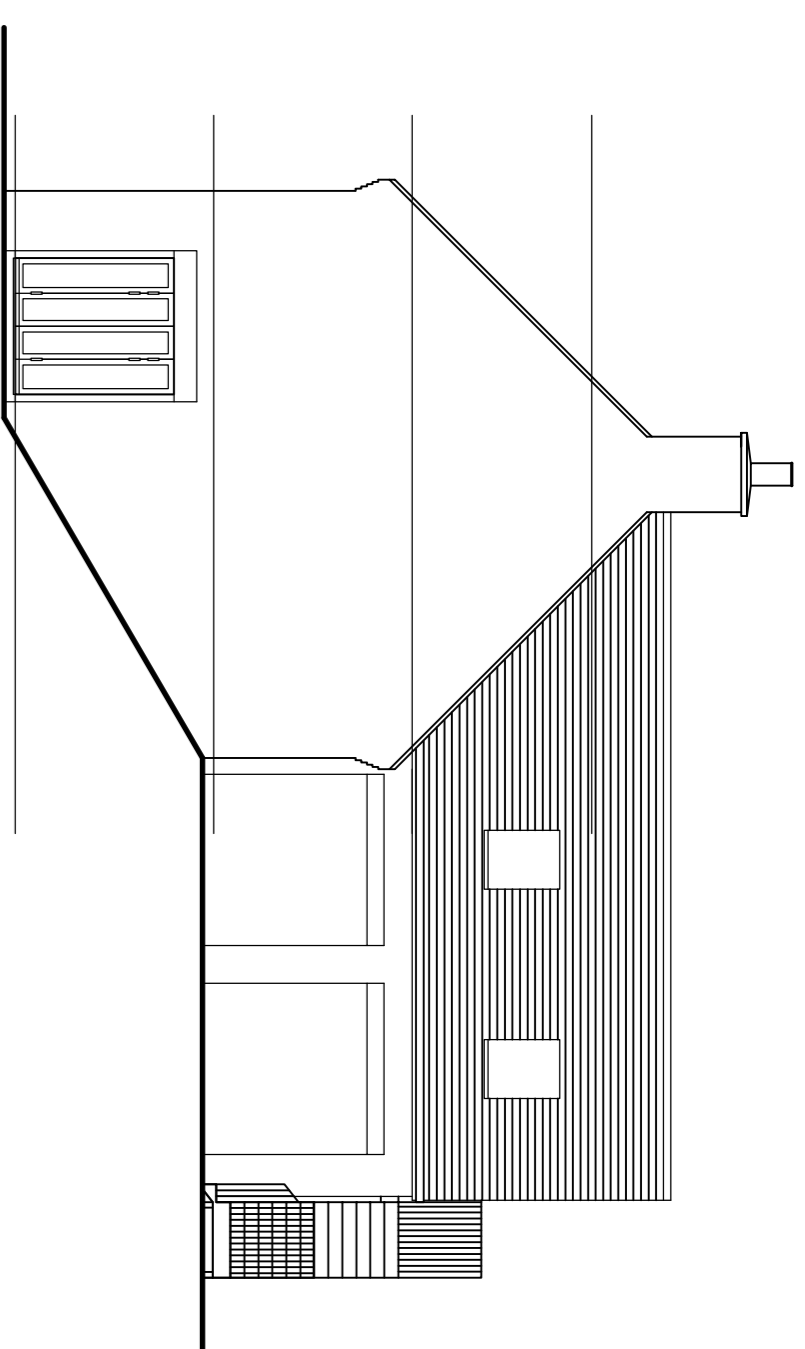
Rear



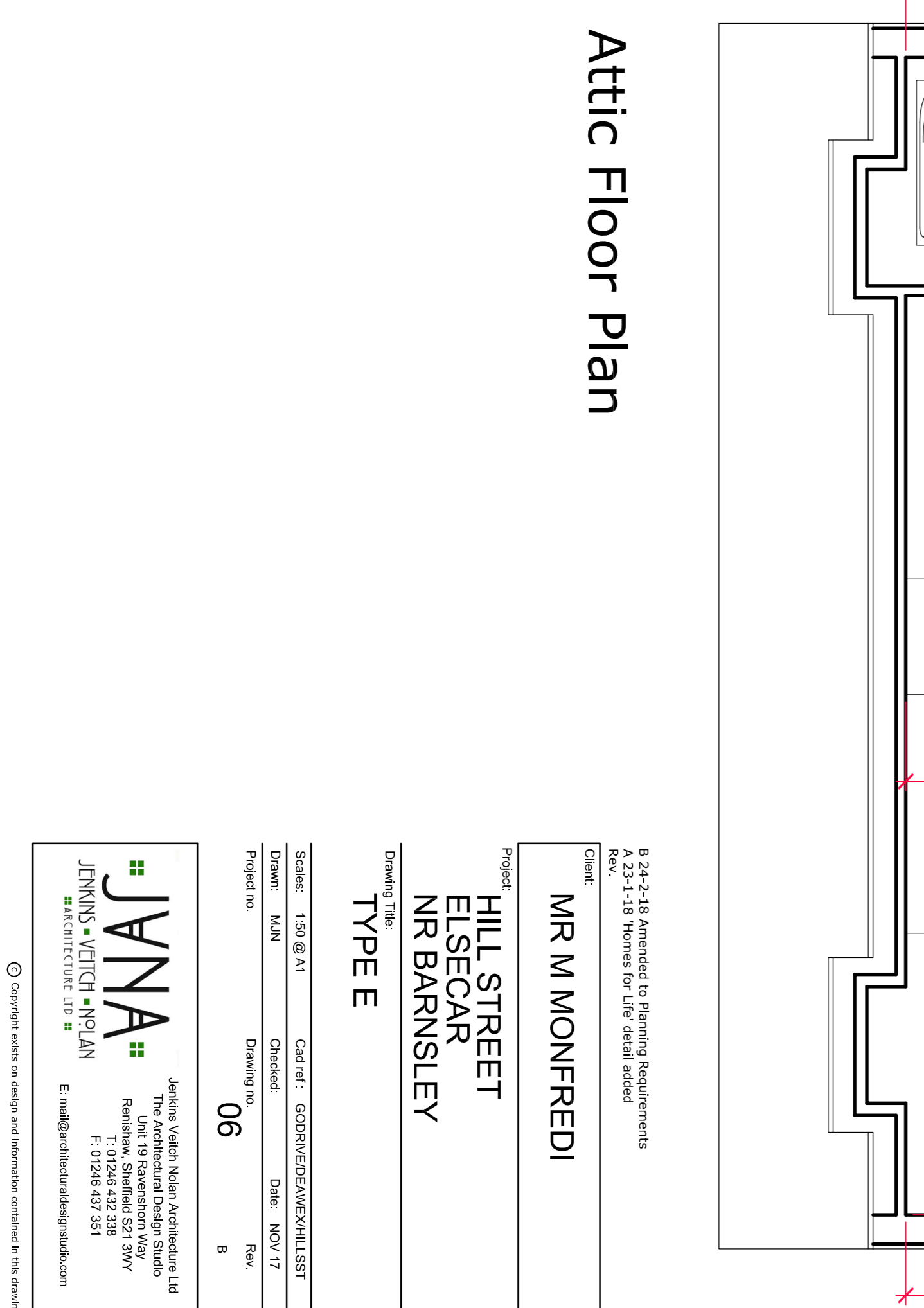
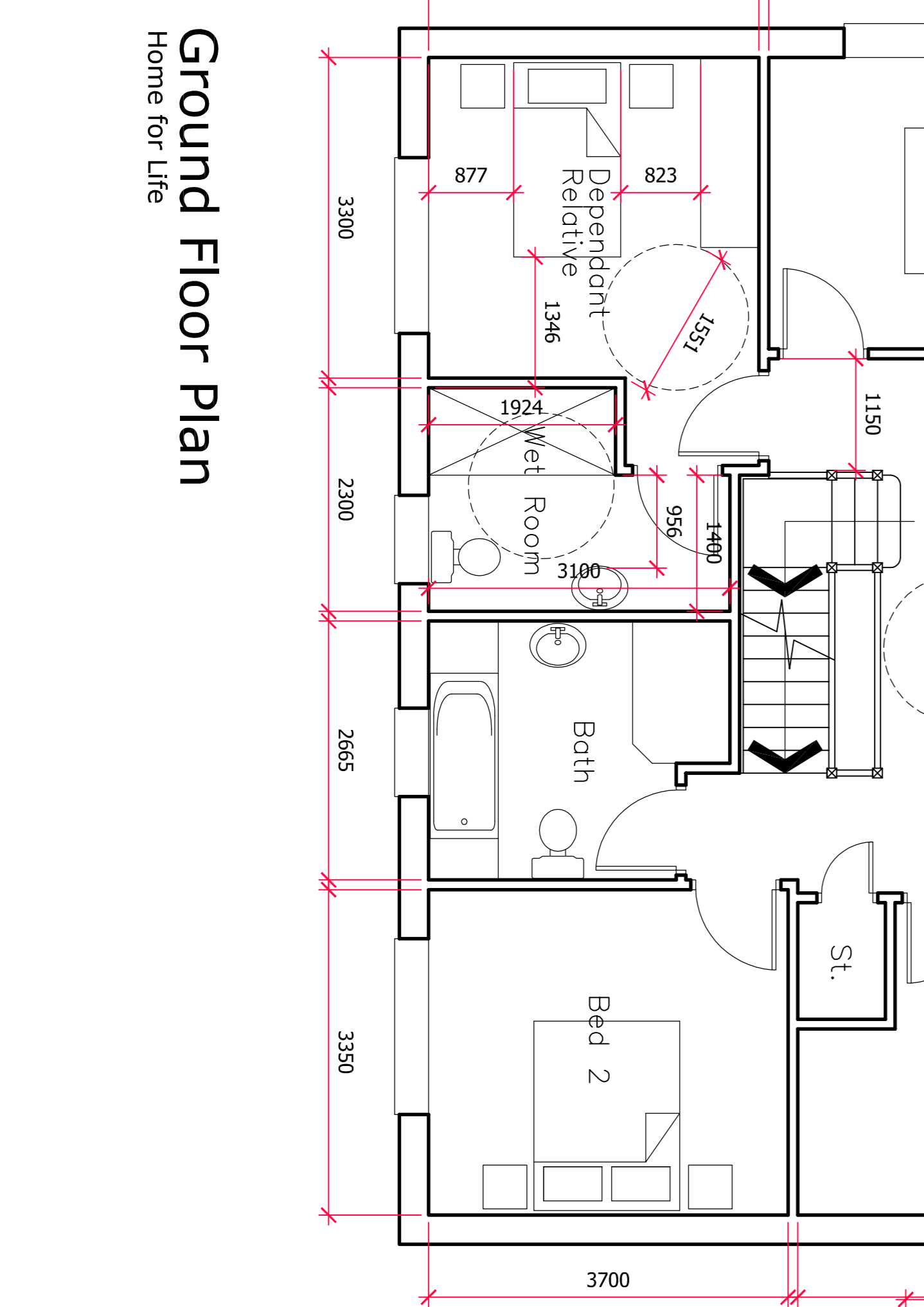
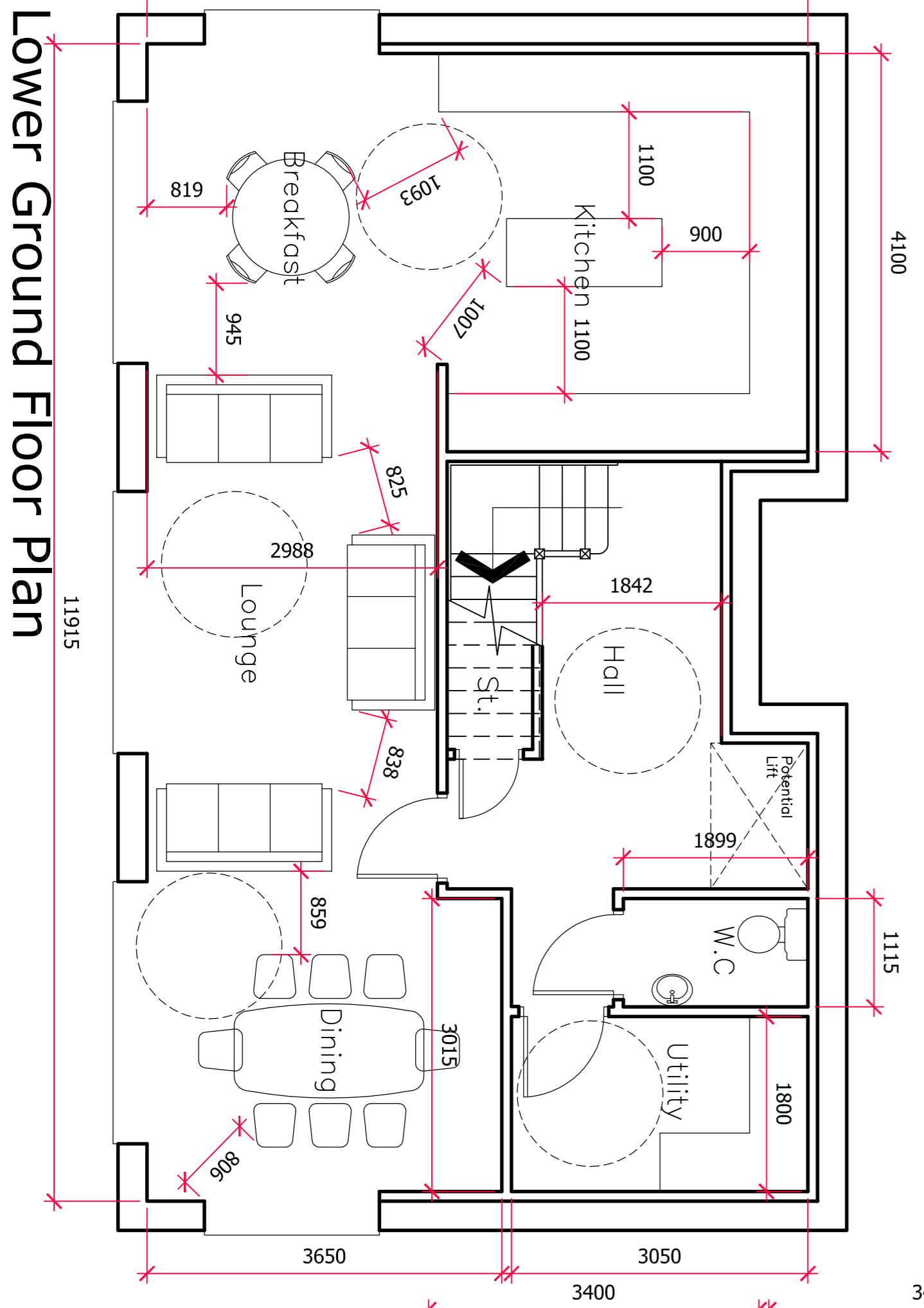
Side



Front



Side



B 24-2-18 Amended to Planning Requirements
 A 23-1-18 Homes for Life detail added
 Rev.:

MR M MONFREDI

Project:
**HILL STREET
 ELSECAR
 NR BARNSLEY**

Drawing Title:
TYPE E

Scale: 1:50 @ A1	Client ref.: GODRIVEDENYKHILLST
Drawn: MAIN	Checked: Date: NOV 17
Project no. 06	Rev. B

Jenkins Vision Urban Architecture Ltd
 Unit 18 Revolutions Way
 Ramlax, Salford S24 3WY
 F: 01264 437 351
 E: info@jenkinsurban.com

JANA
 JENKINS • VITCH • NOLAN
 ARCHITECTS LLP

© Copyright exists on design and information contained in this drawing