

Arboriculture – Tree Protection Plan

Read in conjunction with the Arboricultural Method Statement
Tree works to BS3998:2010 by competent arborists. No works to protected trees without Local Planning Authority consent.

Pre-start: hold a site induction with all contractors to brief tree protection requirements. Keep a signed attendance record on site.

Erect tree protection fencing to the lines shown before any site activity, including deliveries, site strip or ground investigation, and maintain it for the full construction period.

Fencing specification: 2.0 m high welded-mesh panels on a scaffold frame with driven standards, top and mid rails, securely wired; or proprietary system with bracing and pinned feet as risk dictates. Display weatherproof signs reading "Tree Protection Area – Keep Out" at not more than 10 m centres.

Construction Exclusion Zones (CEZ) coincide with the Root Protection Areas (RPAs) unless noted otherwise. No access, storage, mixing, refuelling, fires, washout, excavation, level changes, or services are permitted within CEZs.

Where temporary access is expressly permitted near or within RPAs, install temporary ground protection prior to entry, suitable for the anticipated loadings (e.g. scaffold boards on geotextile for pedestrians; proprietary interlocking panels or cellular systems for light plant; engineer-specified build-ups for heavier plant).

No-dig surfaces: where new hardstanding is required in or adjacent to RPAs, use a no-excavation build-up on a geotextile separator with cellular confinement infilled with clean, open-graded stone and a permeable surface. Avoid concrete haunching within RPAs; use pinned edging.

Services: design routes to avoid RPAs. Where avoidance is not feasible, use trenchless techniques (e.g. thrust bore) beneath RPAs. Any hand-dig within RPAs only under arboricultural supervision, using air-spade where specified.

Spoil, materials, machinery and welfare: locate outside CEZs and away from RPAs. Provide drip-proof bunded areas for fuel and chemicals. No topsoil or subsoil storage within CEZs.

Ground levels within RPAs to remain unchanged. Do not cut, fill, rip, or de-compact within CEZs without written approval from the project arboriculturist.

Tree pits, attenuation features or soakaways must not be located within CEZs unless specifically approved in the AMS and by the LPA.

Pruning only where specified in the schedule or AMS. Do not cut roots greater than 25 mm diameter without arboricultural approval. If unexpected roots are encountered, stop work and seek instruction.

Ecology: check for nesting birds (March–August inclusive) and protected species prior to tree works. If found, cease works and seek ecologist advice.

Monitoring and supervision: the project arboriculturist will carry out key inspections at the following hold points:

- After fencing/CEZ installation and before start on site
 - During any supervised excavation or service installation near RPAs
 - Prior to installation of temporary ground protection or no-dig surfaces
 - At completion, to confirm protection measures were maintained
- Inspection records to be kept on site and provided to the contract administrator and LPA on request.

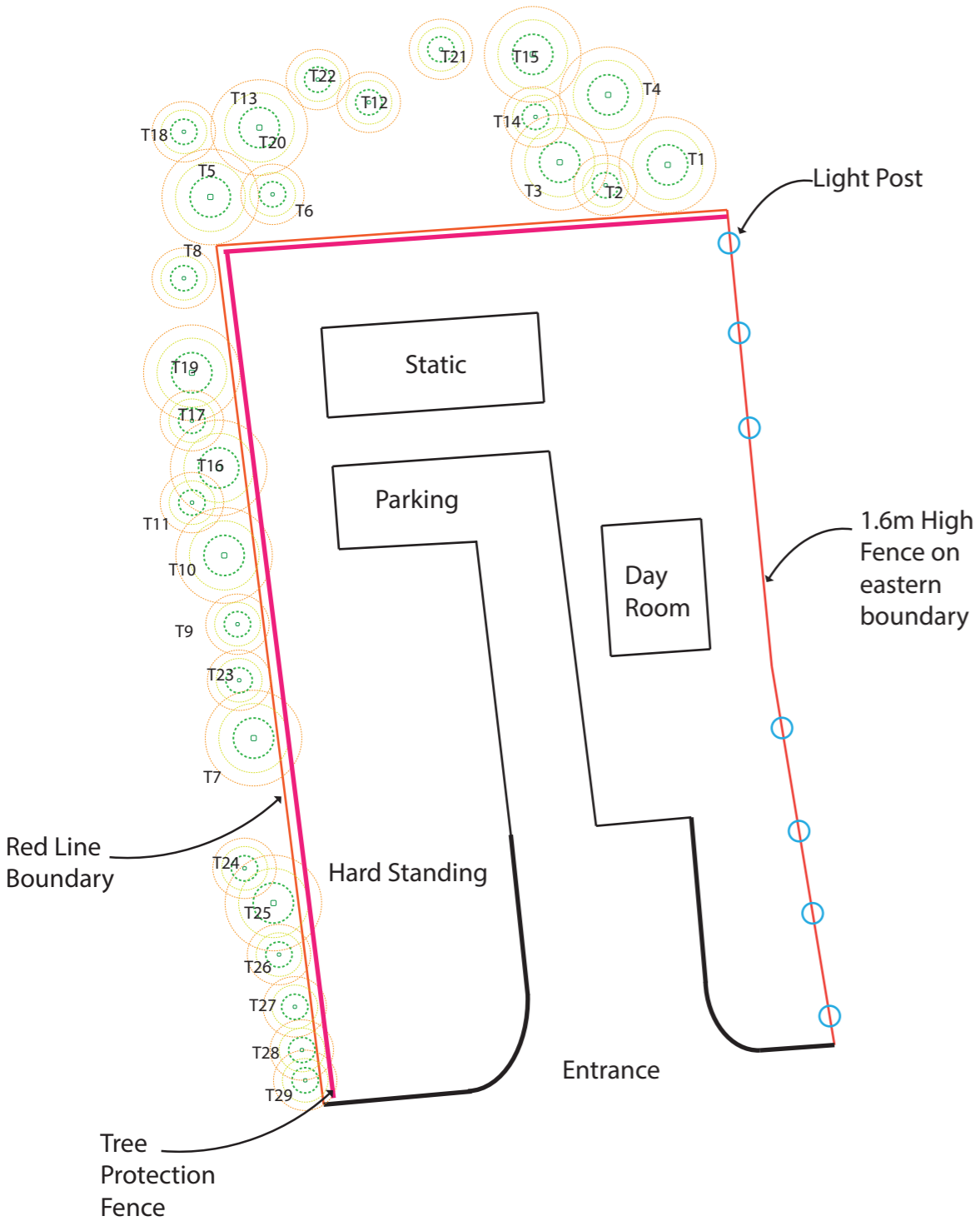
Damage procedure: any accidental damage to trees or protection measures must be reported immediately to the contract administrator and project arboriculturist. Works may be halted until remedial action is agreed.

Ref	Edge	Species	Ht (m)	Stem dia (mm)	Crown N (m)	Crown W (m)	Crown clr (m)	Age	Phys/Struct cond	Cat	RPA radius (m)	RPA area (m²)	Recommendations
T1	North	Hawthorn - Crataegus monogyna	5.0	180.0	2.5			Semi-mature	Good	C2	2.2		Retain/protect; light crown lift to 2.5 m; remove basal suckers; mulch ring.
T2	North	Hawthorn - Crataegus monogyna	6.0	220.0	3.0			Early-mature	Good	C2	2.6	21.2	Retain; crown lift to 2.5-3 m; thin epicormic shoots; maintain hedgeline continuity.
T3	North	Hawthorn - Crataegus monogyna	4.5	160.0	2.0			Young	Good	C2	1.9	11.3	Retain; formative prune for single leader; mulch; no further action.
T4	North	Elder - Sambucus nigra	4.0	150.0	2.0			Semi-mature	Fair	C2	1.8	10.2	Retain; light reduction to balance lean; remove deadwood; monitor annually.
T5	West	Goat willow - Salix caprea	10.0	300.0		4.0		Early mature	Fair	C2	3.6	40.7	Retain; re-pollard in winter to manage end-loading; maintain 3 m buffer to ditch.
T6	West	Grey willow - Salix cinerea	11.0	340.0		4.5		Early-mature	Fair	C2	4.1	52.8	Retain; reduce end-weight on laterals; re-pollard on a 3-5 year cycle.
T7	West	Crack willow - Salix fragilis	14.0	550.0		6.0		Mature	Fair	B2	6.6	136.8	Retain; re-pollard to previous heads; remove storm-damaged wood; inspect annually.
T8	West	Alder - Alnus glutinosa	13.0	380.0		5.0		Early-mature	Good	B2	4.6	66.5	Retain; crown lift to 3 m for access; monitor for alder decline; mulch ring.
T9	West	Alder - Alnus glutinosa	11.0	300.0		4.0		Semi-mature	Good	B2	3.6	40.7	Retain; selective crown lift for access; maintain riparian buffer zone.
T10	West	Silver birch - Betula pendula	14.0	320.0		4.0		Early-mature	Good	B2	3.8	45.4	Retain; remove minor deadwood; crown lift to 3 m for clearance.
T11	West	Downy birch - Betula pubescens	12.0	280.0		3.5		Semi-mature	Good	B2	3.4	36.3	Retain; light crown thin to improve structure; crown lift to 2.5 m.
T12	North	Sycamore - Acer pseudoplatanus	18.0	580.0	6.0			Mature	Good	B1	7.0	153.9	Retain; remove minor deadwood; crown lift for clearance; biennial inspection.
T13	North	Sycamore - Acer pseudoplatanus	20.0	640.0	6.5			Mature	Fair	B1	7.7	186.3	Retain; remove deadwood; reduce end-weight on exposed limbs; annual inspection.
T14	North	Field maple - Acer campestre	9.0	260.0	3.5			Early-mature	Good	B2	3.1	30.2	Retain; formative prune to improve structure; crown lift to 2.5 m.
T15	North	Rowan - Sorbus aucuparia	8.0	220.0	3.0			Semi-mature	Good	C2	2.6	21.2	Retain; light crown lift; retain berries for wildlife; mulch ring.
T16	North	Wild cherry - Prunus avium	12.0	300.0	4.0			Early-mature	Good	B2	3.6	40.7	Retain; remove crossing/rubbing branches; mulch; monitor condition.
T17	North	Blackthorn (tree form) - Prunus spinosa	4.0	140.0	2.0			Young	Good	C2	1.7	9.1	Retain; formative prune to single leader; manage root suckers; maintain thicket edge.
T18	North	Ash - Fraxinus excelsior	17.0	460.0	5.5			Early-mature	Poor	J	5.5	95.0	Retain as standing deadwood if safe; else sectional fell and replant one native heavy standard.
T19	North-West	Goat willow (multi-stem) - Salix caprea	9.0	280.0	4.0	4.0		Semi-mature	Fair	C2	3.4	36.3	Retain; reduce to balanced multi-stem; coppice/pollard on 5-year cycle; protect NW corner buffer.
T20	North	Hawthorn - Crataegus monogyna	5.5	200.0	2.5			Semi-mature	Good	C2	2.4	18.1	Retain; crown lift to 2.5 m; gap-up hedge with native whips (hawthorn/blackthorn).
T21	North	Holly - Ilex aquifolium	6.0	180.0	2.5			Semi-mature	Good	C2	2.2	15.2	Retain; light trim for access; maintain as evergreen screen; mulch ring.
T22	North	Crab apple - Malus sylvestris	7.0	200.0	3.0			Semi-mature	Good	C2	2.4	18.1	Retain; winter prune to open crown; install one bird box on nearby tree.
T23	North	Hazel (standard) - Corylus avellana	5.0	160.0	2.5			Young	Good	C2	1.9	11.3	Retain; formative prune to single stem; mulch; no further action.
T24	West	White willow - Salix alba	16.0	650.0		7.0		Mature	Fair	B2	7.8	191.1	Retain; re-pollard back to existing heads in winter; inspect every 18-24 months.
T25	West	Poplar (grey) - Populus x canescens	18.0	560.0		6.0		Early-mature	Fair	B1	6.7	141.0	Retain; reduce end-weight on long laterals; 18-24 month inspection cycle.
T26	North	Beech - Fagus sylvatica	15.0	450.0		5.0		Early-mature	Good	B1	5.4	91.6	Retain; maintain 75 mm mulch ring; avoid compaction; light crown lift.
T27	West	Goat willow - Salix caprea	7.0	220.0		3.5		Young	Fair	C2	2.6	21.2	Retain; re-coppice/pollard as needed; maintain damp ground buffer.
T28	West	Alder - Alnus glutinosa	9.0	240.0		3.5		Semi-mature	Good	B2	2.9	26.4	Retain; crown lift to 2.5 m; monitor for alder decline; mulch ring.
T29	West	Silver birch - Betula pendula	13.0	340.0		4.5		Early-mature	Good	B2	4.1	52.8	Retain; remove minor deadwood; light crown thin; crown lift to 3 m.

Colour Conventions (BS5837:2012)

Feature	Standard Colour
Category A trees	Light Green
Category B trees	Mid Blue
Category C trees	Grey
Category U trees	Dark Red
Canopy Spread	Yellow/Green outline
Root Protection Area (RPA)	Orange dashed circle
Proposed Tree Removal	Red cross or X
Tree Protection Fencing	Thick Pink or Magenta line
Construction Exclusion Zone (CEZ)	Light Blue hatch
Existing structures	Black
Proposed structures	Purple

Project Name:
Drawing Title: Arboriculture
Date: Revised 22 August 2025
Scale: 1:200 at A3
Prepared by: Chloe Lass
Contact details: environmentaldesignuk@gmail.com
Status: Live



SCALE 1:200

