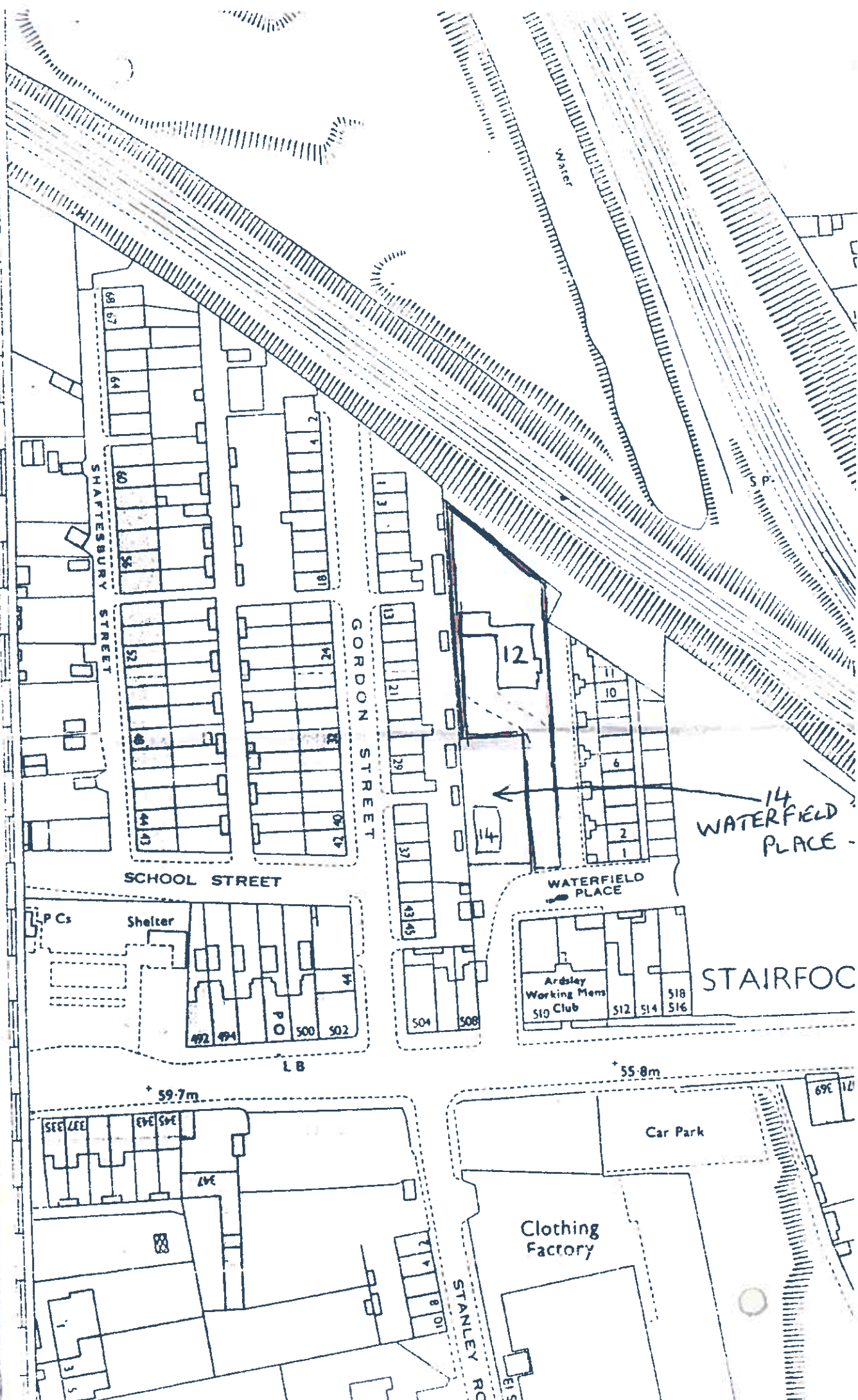


In 2003 we purchased number 12 Waterfield place and its usage then was a 4 bedroom bungalow being domestic use by an elderly couple. We then applied to change its use from domestic to commercial so we could operate a school at the site. No external building work was carried out, just fire alarms and fire doors were installed. The double garage was converted into a classroom.

The school has now ceased operating and is being sold. The couple who are buying it want to use it as their home and would like to change its use back to domestic use as their home. This is the application for this.



SHAFTSBURY STREET

GORDON STREET

SCHOOL STREET

WATERFIELD PLACE

14 WATERFIELD PLACE

STAIRFOC

LP Cs

Shelter

Ardley Working Mens Club

LB

59.7m

55.8m

Car Park

Clothing Factory

STANLEY ROAD

SEE ZEE

EBE SVE

2VE

PO

500

502

504

508

510 Club

512

514

518

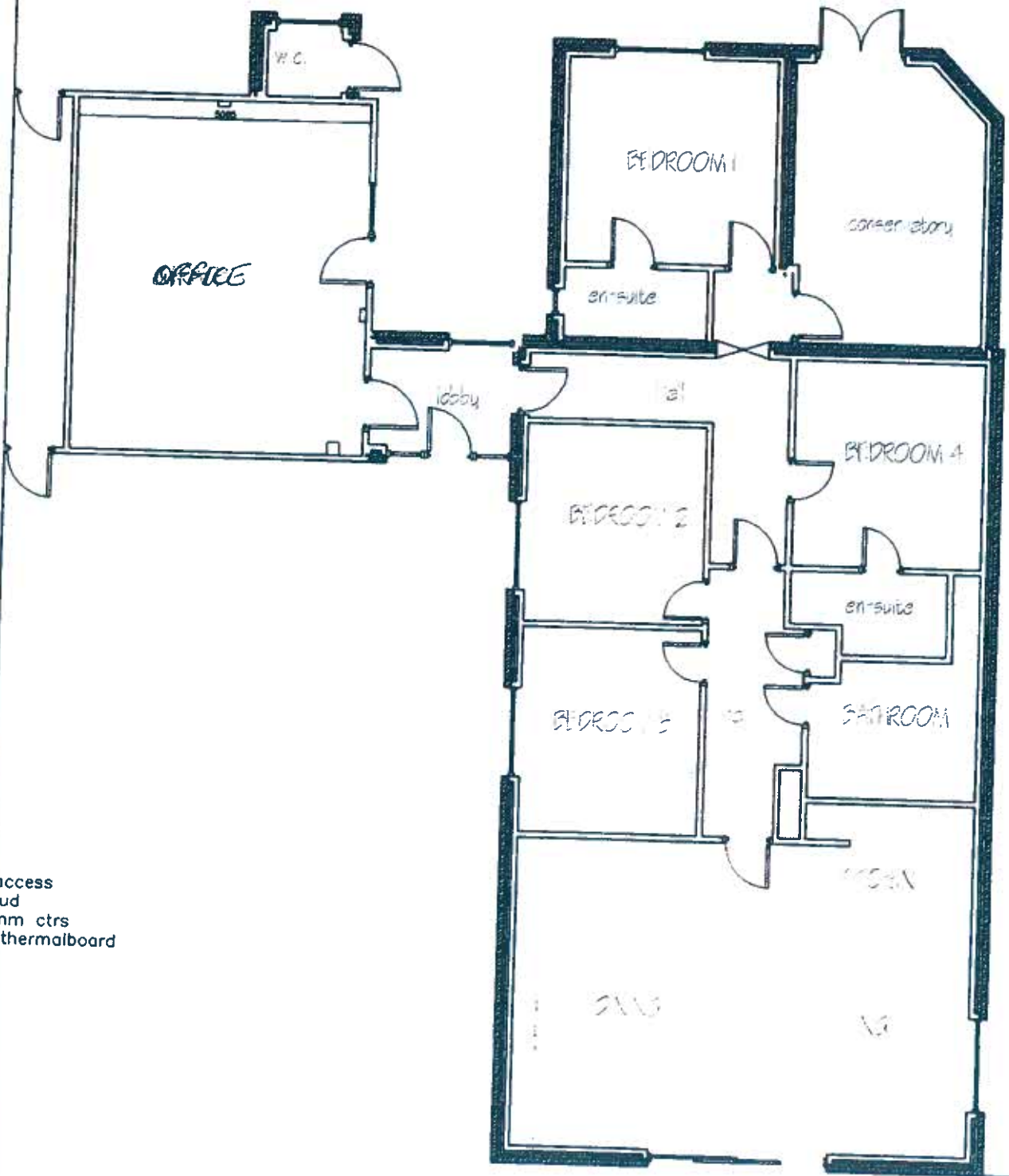
516

69E 10

EIS

PROPOSED FLOOR PLAN

measurements to change



able access
ed stud
450mm ctrs
prod thermalboard





