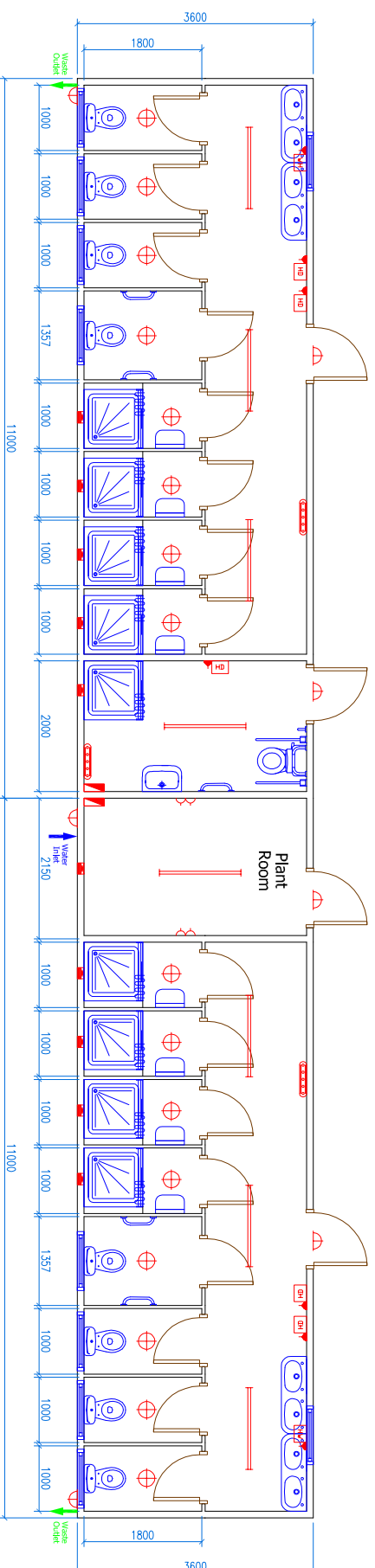
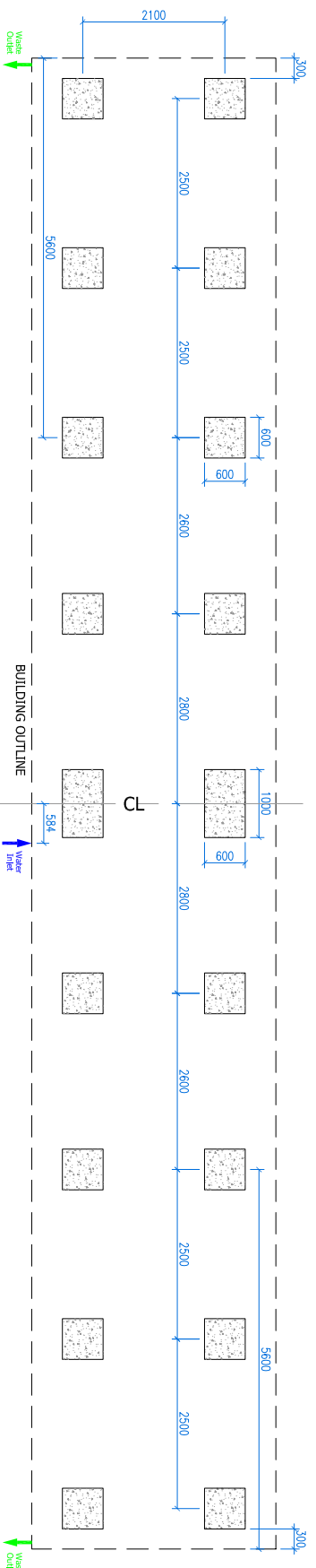


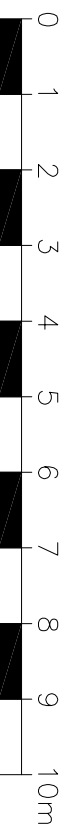
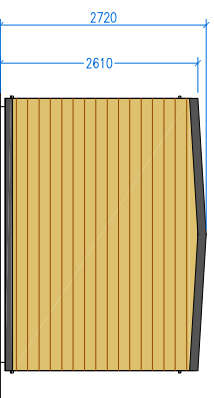
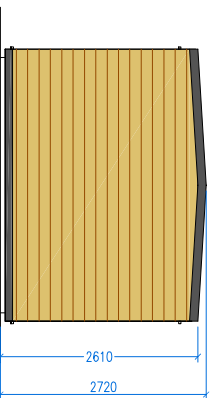
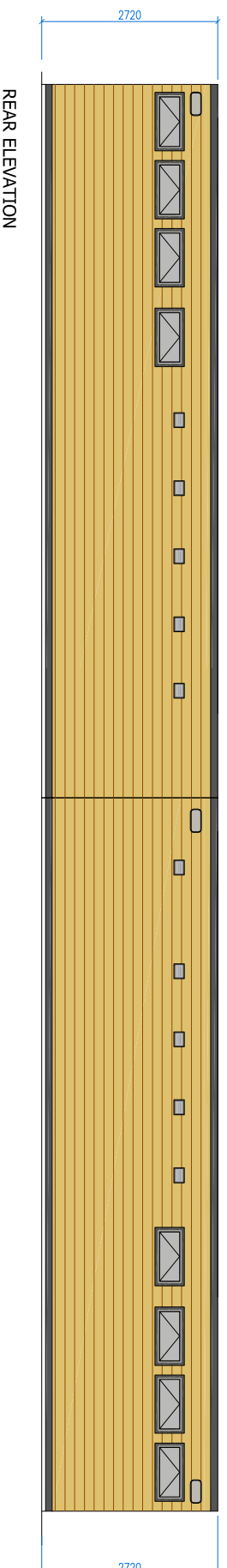
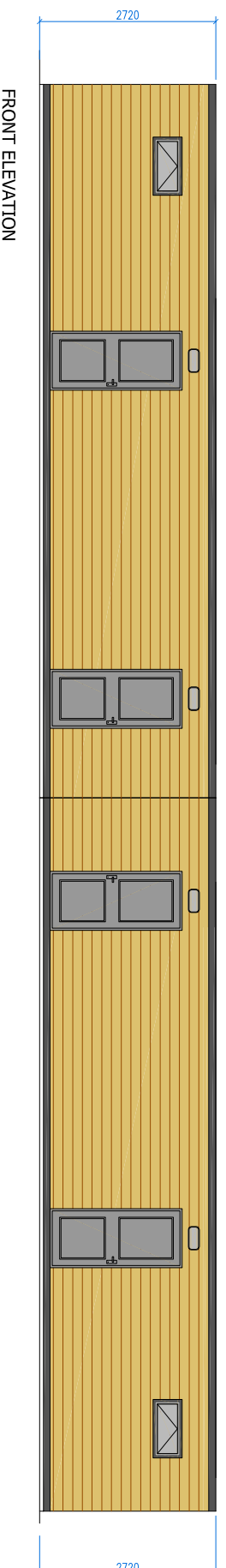
PROPOSED 22 x 3.6m Toilet - Shower block
PLAN VIEW SCALE 1:100



FOUNDATION PAD LAYOUT SCALE 1:100



PROPOSED 22 x 3.6m Toilet - Shower block
ELEVATIONS SCALE 1:100



SCALE IN METRES

Module No. 2 - 22m x 3.6m external dimensions (Chesterfield)

- 1 No. Single Phase Electric Consumer Fuse Board
- 10 No. UPVC 900mm x 450mm Black PVC Double Glazed High Level Windows.
- 6 No. 1800mm Fluorescent Lights with Diffusers.
- 17 No. 2-D Bulkhead Lights and 17 No. PIR Sensors.
- 2 No. Exit Lights and 2 No. Emergency Lights.
- 2 No. External Bulkhead Lights on photo cell.
- 4 No. Floor Drains to be fitted in Sinks area, Disabled Compartment and Drying Room.
- 24 No. Clothes Hooks mounted on reinforced side wall opposite shower cubicles.
- Door handles to have bolt through type handle fitted, for robustness.
- Service panels behind toilets to have a key lock to stop children from gaining access and tampering.
- 6 No. Unisex Toilet Cubicles, each comprising:
 - 1 No. single flush handle type porcelain toilet with concealed flush cistern.
 - 1 No. Toilet Roll Holder.
 - 1 No. full-length solid core Internal Door with Indicator Bolt.
 - 2 No. Ambulatory Toilet Cubicles, each containing:
 - 1 No. single flush handle type porcelain toilet with concealed flush cistern.
 - 1 No. Toilet Roll Holder.
 - 2 No. fitted safety hand rails as shown on drawing.
 - 1 No. full-length solid core Internal Door (1000mm) with Indicator Bolt.
- 8 No. Unisex Shower Cubicles, each comprising:
 - 1 No. 900mm x 900mm Shower Tray, Shower Panels & Shower Door. Showers heated by boiler with mixing valves with flow control fitted.
 - 1 No. Extractor Fan.
 - 2 No. clothes hooks mounted on inside of entrance door
 - 1 No. full-length solid core Internal Door with Indicator Bolt.
- 1 No. DocM Disabled Toilet and Shower Compartment (3600mm x 2400mm) containing:
 - 1 No. DocM Toilet Pack with Support Bar and Safety Rail.
 - 1 No. Extractor Fan.
 - 1 No. Panic Alarm.
 - 1 No. 1000mm Steel bonded accessible external door with mortise lock and thumb lock.
 - 1 No. Wash Basin fitted at wheelchair height.
- 1 No. Plant Room (2400mm x 3600mm) to include:
 - 2 No. Copper Craft 300ltr Hot Water Cylinder and low pressure pump.
 - 1 No. 838mm Black UPVC Internal Door with 5-lever Mortise Lock.
- 2 No. 8ft Stainless Steel Wash Troughs, each with 4 No. sets of hot and cold non-concussive taps with timed flow valves.
- 4 No. fused spurs for Hand/Hair Dryers.
- 4 No. Panel Heaters on own spur.
- 2 No. 838mm Black UPVC External Doors with Door Closer, Mortise Lock and Indicator Bolt.
- Non-Slip Vinyl Floor Covering with black PVC skirting - Colour: Blue.
- White vinyl faced plasterboard internal wall finish. White food safe steel finish to shower areas.
- Siberian Larch External Cladding to specifications provided by client.
- Steel Framed Chassis

ELECTRICAL LEGEND	
	Hand Dryer on Spur
	Fluorescent Light Fitting
	2D Bulkhead
	External Light
	Emergency Light
	Heater C/W Spur
	Consumer Unit
	Wall Vent
	Extractor Fan
	Water Heater on Spur
	Twin Socket

ToiletsForSale.com
 By Convenience Services Ltd
 0800 138 9246

Suite 107, ViewPoint
 Basingstoke
 Hampshire
 RG21 4RG
 Phone: 44 (0) 800 1389246
 mike@toiletsforsale.com
 www.toiletsforsale.com

Client: **Kingswood Leisure**

Project: **22 x 3.6m
 Chesterfield Toilet - Shower Block**

Drawing Title: **Planning Drawing**

Scale: 1:100 (A3)	Drawing No.:
Date: 15-02-2017	17-09-001
Drawn: SM	