

**Proposed Hedge**

Nr	Code	Plant Name	Ht(cm)	Root	Cntr()	Nr/m
1114	Fs	Fagus sylvatica	60-80	B	4.00	
88	LoA	Lonicera ovalifolium 'Aureum'	60-80	B	4.00	
930	PxRR	Photinia x fraseri 'Red Robin'	60-80	B	4.00	

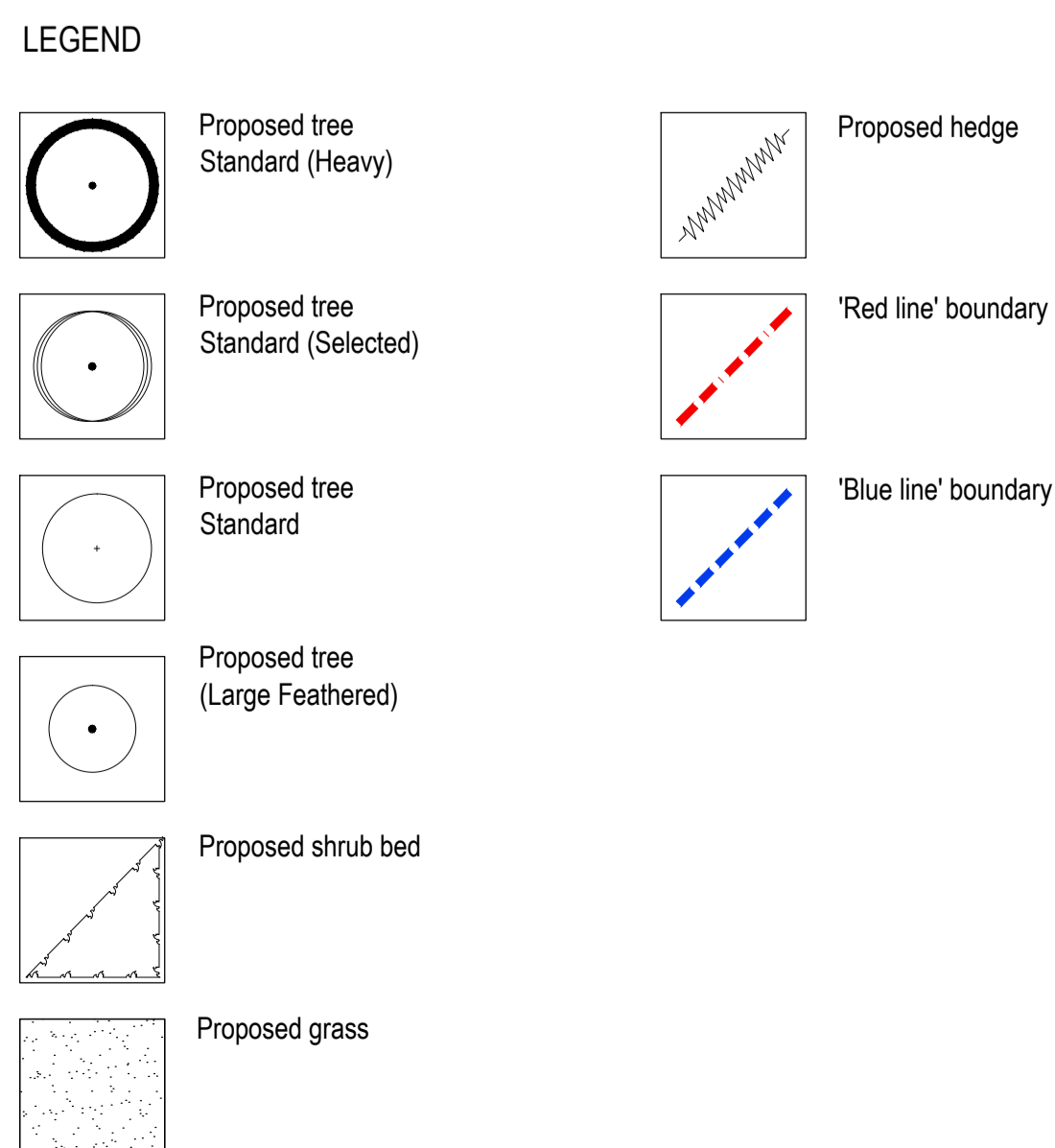
**Proposed Shrubs**

Nr	Code	Plant Name	Ht(cm)	Root	Cntr()	Nr/m
24	BAN	Berberis thunbergii 'Atropurpurea Nana'	20-30	C	5	4.00
53	BA	Berberis thunbergii 'Atropurpurea'	40-60	C	5	3.00
72	CBM	Ceanothus 'Blue Mound'	30-40	C	5	3.00
52	CxCG	Chaenomeles x superba 'Crimson and Gold'	60-80	C	5	3.00
25	CaS	Cornus alba 'Sibirica'	60-80	C	5	3.00
17	CaWO	Cornus alternifolia 'Winter Orange'	40-60	C	5	4.00
20	CapAI	Cytisus x praecox 'Algold'	40-60	C	5	3.00
98	EEO	Eucyrtus fortunei 'Emerald 'N' Gold'	20-30	C	5	4.00
113	ERQ	Eucyrtus fortunei 'Silver Queen'	20-30	C	5	5.00
40	HMW	Hebe 'Mrs Winder'	20-30	C	5	4.00
40	HRE	Hebe 'Red Edge'	20-30	C	5	3.00
51	HHH	Hypericum 'Hidcot'	20-30	C	5	3.00
79	LAF	Lavandula angustifolia 'Hidcot'	20-30	C	5	4.00
77	LVBG	Lonicera nidia 'Baggessens' Gold'	30-40	C	5	3.00
104	PxRR	Photinia x fraseri 'Red Robin'	40-60	C	5	3.00
28	PDL	Prunus laurocerasus 'Otto Luyken'	30-40	C	5	4.00
101	PSR	Pyracantha 'Saphyr Red'	40-60	C	5	3.00
92	PSY	Pyracantha 'Saphyr Yellow'	40-60	C	5	3.00
18	SoP	Salvia officinalis 'Purpurascens'	30-40	C	5	4.00
56	SoT	Salvia officinalis 'Tricolor'	30-40	C	5	4.00
71	SRu	Skimmia japonica 'Rubella'	30-40	C	5	3.00
14	Vd	Viburnum davidii	20-30	C	5	3.00
22	WV	Weigela florida 'Variegata'	40-60	C	5	3.00

**Proposed Trees**

Nr	Code	Plant Name	Form	Ht(cm)	Grth(cm)	CStm(cm)	Root	Cntr()
14	ACE	Acer campestre 'Elatik'	Standard (Selected)	300-350	10-12	175-200	RB	
31	AI	Amelanchier lamarckii	Standard (Selected)	300-350	10-12	175-200	RB	
11	Bp	Betula pendula	Large Feathered	200-250			B	
33	Bu	Betula utilis 'Jaquemontii'	Large Feathered	200-250			B	
9	CBFF	Carpinus betulus 'Frans Fontaine'	Standard (Heavy)	350-425	12-14	175-200	C	45
11	PcCh	Pyrus calleryana 'Chanticleer'	Standard (Selected)	300-350	10-12	175-200	RB	
6	PxRS	Pyrus calleryana 'Red Spire'	Standard (Selected)	300-350	10-12	175-200	RB	
14	Sal	Sorbus aria 'Lutescens'	Standard (Selected)	300-350	10-12	175-200	RB	
21	Si	Sorbus intermedia	Standard (Selected)	300-350	10-12	175-200	RB	

**Planting Notes**  
 Topsoil shall be a minimum of 400mm depth over planting beds and graded to fall. Imported topsoil must be BS3882:2007 compliant and existing topsoil must be cultivated in accordance with BS3882:2007. No cultivation should take place in wet waterlogged conditions.  
 Herbicide and cultivation: Topsoil to be treated with two applications of herbicide prior to planting, where necessary, strictly in accordance with the Control of Pesticides Regulations 1986 (as amended 1997 or, otherwise, updated/superseded legislation) and following manufacturer's instructions by qualified staff. The topsoil shall then be cultivated to 150mm depth.  
 Planting: All planting and turfing shall conform to BS 3838: 1992 and BS 4428: 1989.  
 Trees: Standard trees to be planted in pits 800x800x450mm or dimensions of rootball, whichever is greater. Tree to be supported by 1Nr stakes (1500mm long, 60mm above ground, 75mm diameter) and 1Nr bio-degradable tie. Heavy Standard trees to be planted in pits 1000x1000x600mm or dimensions of rootball, whichever is greater. Tree to be supported by 2Nr stakes (1500mm long, 60mm above ground, 75mm diameter, cross bar (400x100x15mm) and 1Nr bio-degradable tie. Alligree soil improver and 150g Etnag (or, equivalent) to be incorporated into the soil of all new tree pits. Trees to be planted centrally within a tree pit.  
 Container grown shrubs, transplants and whips: Shrubs and transplants shall be planted in pits 300x300x400mm depth, and the backfill shall include 3 litres of peat-free tree and shrub compost. Where two or more shrub species are indicated within a single bed each species shall be randomly mixed throughout the bed in groups of 3/5.  
 Herbicide: Spot treat with herbicide throughout the maintenance period in accordance with the manufacturer's instructions.  
 Mulch: Planting beds to receive 75mm depth pulverised ornamental bark mulch. Ensure the top of the mulch layer is a minimum of 15mm below adjacent pavements and other surfaces, to prevent spillage.  
 Plant position: Final position of trees and shrubs subject to confirmation of service location and approval of statutory undertakers.  
 Grass: All turfseeded areas to be cultivated and levelled as required removing any stones, rubble, subsoil, general construction waste.



This drawing is the copyright of Rosetta Landscape Design and cannot be reproduced in any form without the express consent of the company. Written and scaled dimensions to be checked on site, any discrepancies reported prior to work commencing. If in doubt please ask.

This drawing has been prepared for the purpose of planning approval.

Rev C: Revised to Harron Homes 'Planning Layout' 313-100-H - 06Mar16 (BP)  
 Rev B: Revised to Harron Homes 'Planning Layout' 313-100-G and comments received from the council - 03Mar16 (BP)  
 Rev A: Revised to Harron Homes 'Planning Layout' 313-100-F - 24Feb16 (BP)  
 Base: Harron Homes 'Planning Layout' 313-100-B received 27Nov15

PROJECT North Gawber Colliery, Barnsley - Phase 2  
 TITLE Detailed Landscape Proposals (1 of 3)  
 CLIENT Harron Homes  
 DATE 02 Dec 15 SCALE 1 : 250 SHEET A0  
 DRAWN MP/jr DRAWING NO 2619/1  
 CHECKED MP REVISION C

