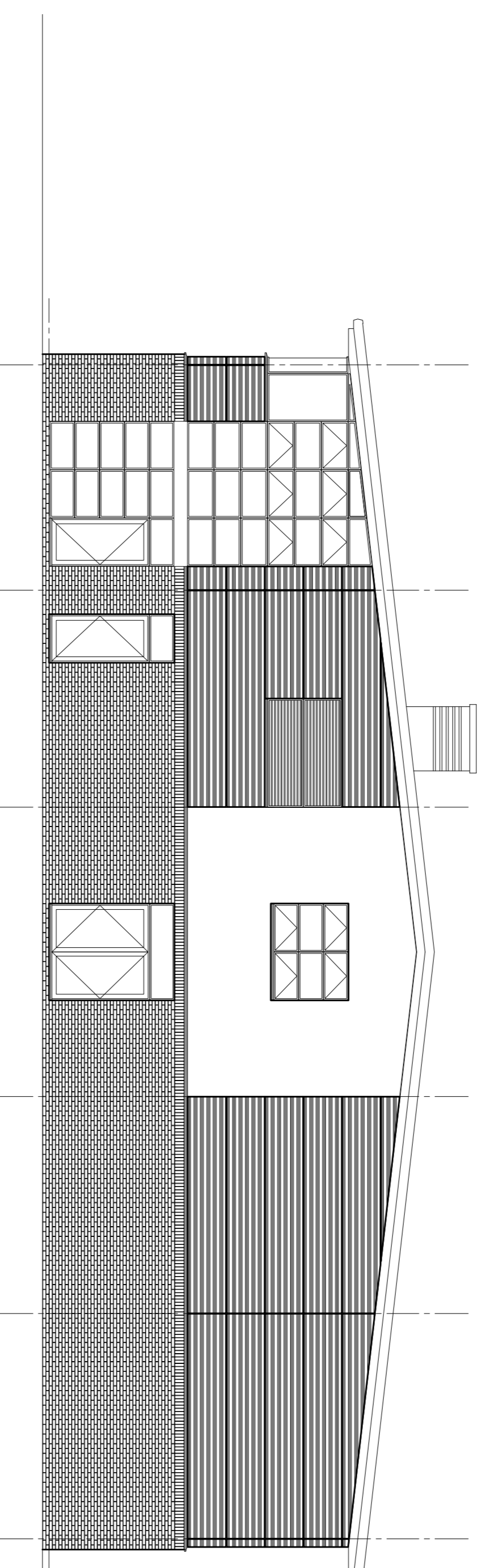
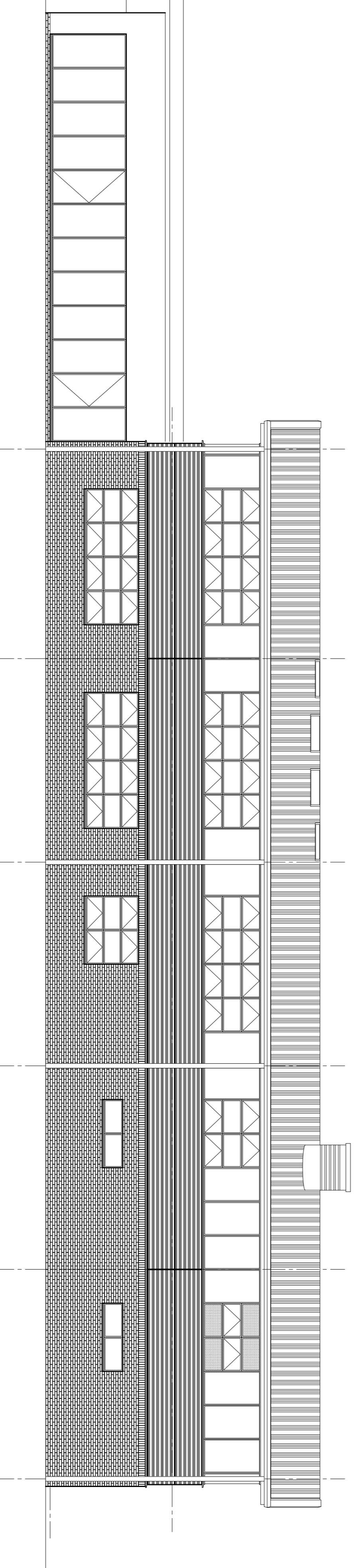


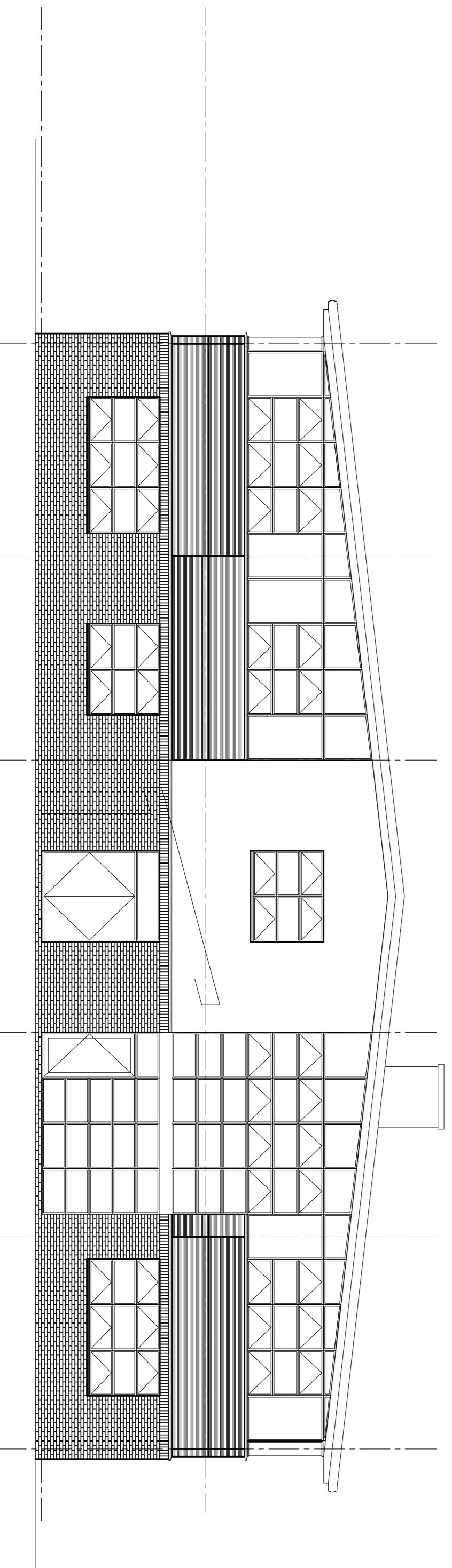
Proposed North West Elevation - Scale 1:100



Proposed North East Elevation - Scale 1:100



Proposed South East Elevation - Scale 1:100



Proposed South West Elevation - Scale 1:100

Graphical Scale 1:100

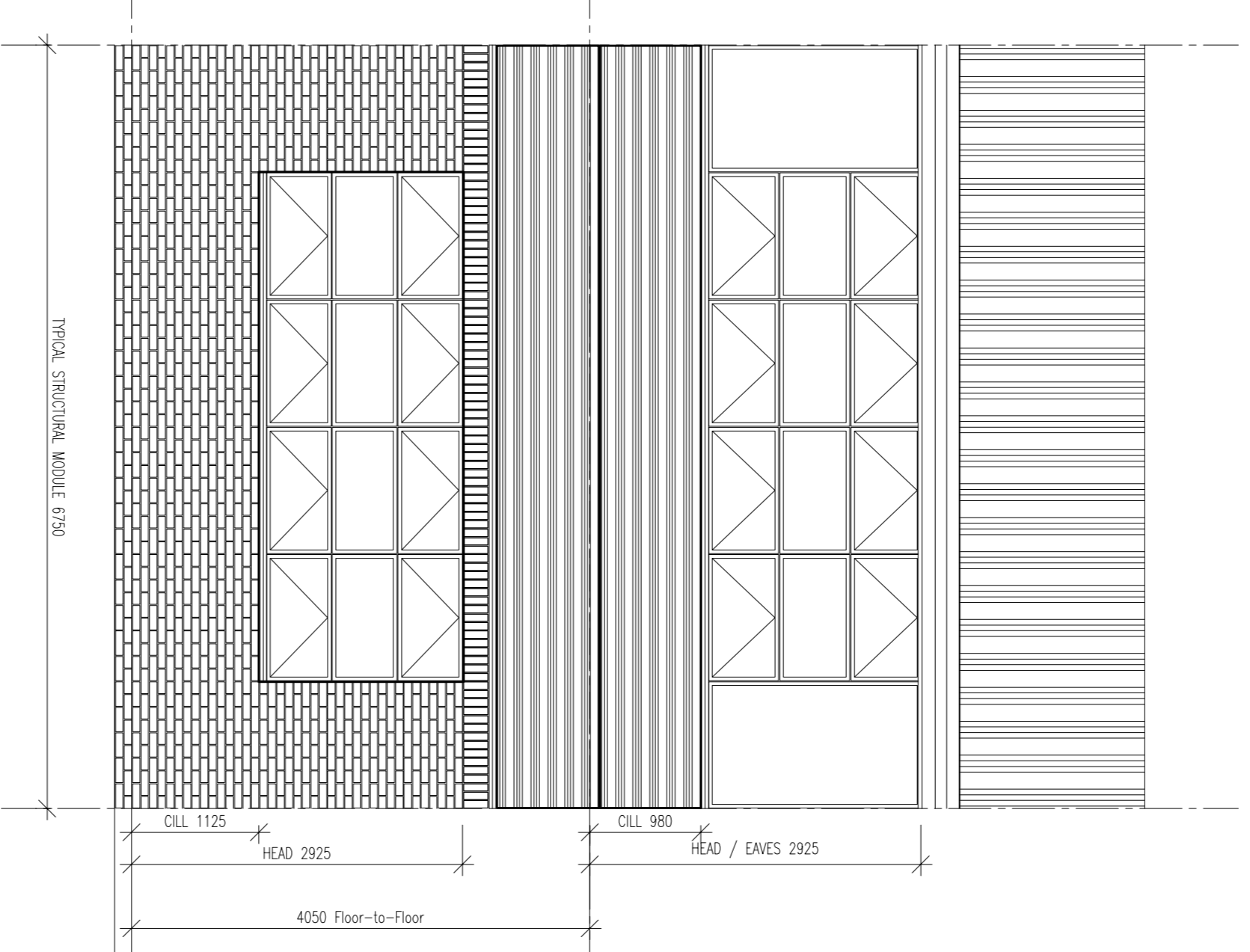
Drawn by: MJB	Date: 07/03/12	Scale: 1:100	@ A1
Status: Final	Revision: 2	Coordinator: MJB	Unit Issue: DC
Date: 07/03/12	DC	Date: 08/08/12	DC
Approved by: DC	DC	Date: 08/08/12	DC

Revision: **2**

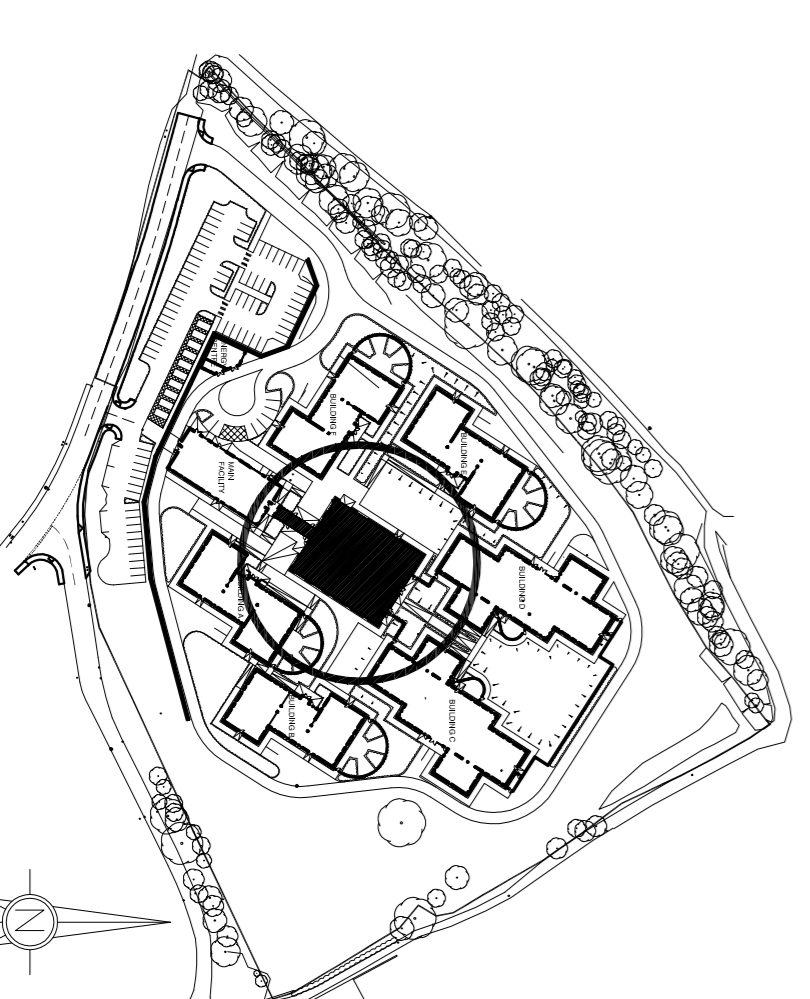
Revision	Date	Drawn	Approved
A - LAYOUT REVISED FOLLOWING USER CONSULTATION	08.08.12	MJB	DC
B - FIRST FLOOR PLANT MOVED TO EXTERNAL	14.08.12	MJB	DC
C - ELEVATIONS & MATERIALS REVISED FOLLOWING USER CONSULTATION	28.08.12	MJB	DC
D - FIRST ISSUE FOR TENDER	08.08.12	MJB	DC
E - ROOF COWL S AMENDED	28.09.12	MJB	DC

Materials Key:

- Roof Eaves / Soffits / Trims > Powder Coated Aluminium RAL 9010 (Pure White)
- Pitched Roof > Kingspan Composite Sheet KS1000RW, Colour - Metallic Sirius
- Rainwater Goods > Powder Coated Aluminium RAL: 7030 (Stone Grey)
- Continuous 'Ribbord' Windows > Powder Coated Aluminium Frames RAL: 7030 (Stone Grey) with Glazed infill / composite panels random mix of RAL: 7030 (Stone Grey), 7031 (Bleu Grey), 7022 (Umbrä Grey), 1013 (Oyster White)
- Composite Cladding Panels > PAL 9002 (Hamlet)
- Brick Soldier Course > Inset Windows > Powder Coated Aluminium Frames RAL 7030 (Stone Grey) with Glazed Infill
- Brickwork Plinth > Ibsstock Stuart Buff
- Brickwork below DPC > Ibsstock Staffordshire Blue Brindle Draglance*



Typical Elevation Module - Scale 1:50



Activity Hub - Location Plan Scale 1:2500

<h1>Tender</h1>	
Client:	Earlswood Autistic Hospital
Project:	Activity Building Elevations
Project No: 3301-03	Drawing No: (2-)19
Rev: E	
RACE COTTAM ASSOCIATES	
<small>Sheela Saha 3 West House 56y Street Sheela 91 481 t: 014 273 7050 f: 014 273 7881 www.rccottam.com</small>	

* The drawing is the copyright of Race Cottam Associates Ltd. Do not scale from this drawing.