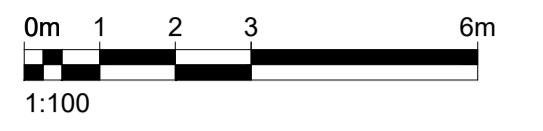


DO NOT SCALE FROM THIS DRAWING. ALL DIMENSIONS TO BE CHECKED ON SITE BY CONTRACTOR. REPORT ANY DISCREPANCIES TO DRAWING AUTHOR AND PROPERTY SERVICES TEAM. DRAWING OR CONTENTS SHOULD NOT BE DUPLICATED WITHOUT PRIOR CONSENT.

DRAWING TO BE READ IN CONJUNCTION WITH ALL OTHER PROJECT DOCUMENTS INCLUDING BUT NOT LIMITED TO DRAWINGS, SPECIFICATIONS, SCHEDULES

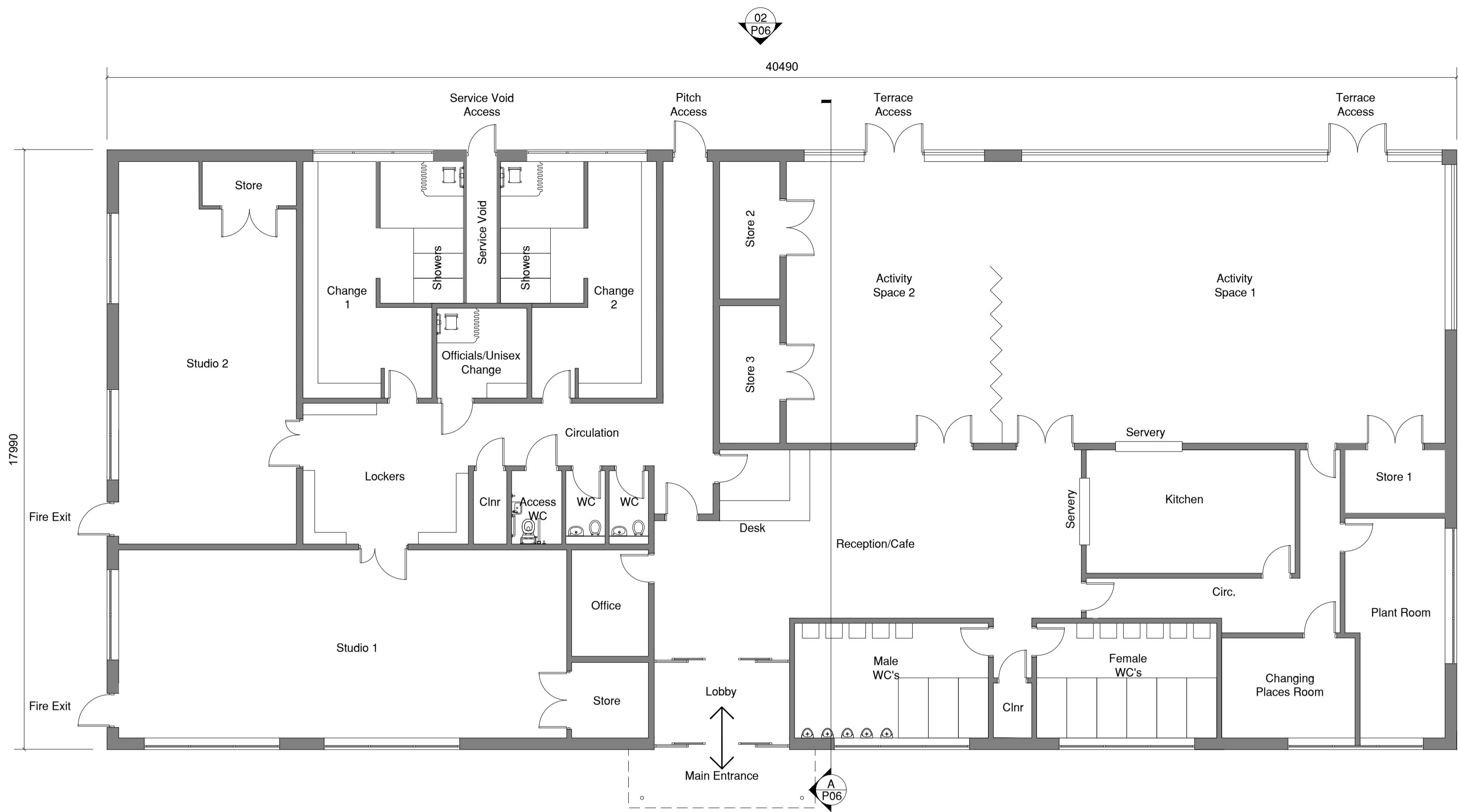


NOTES

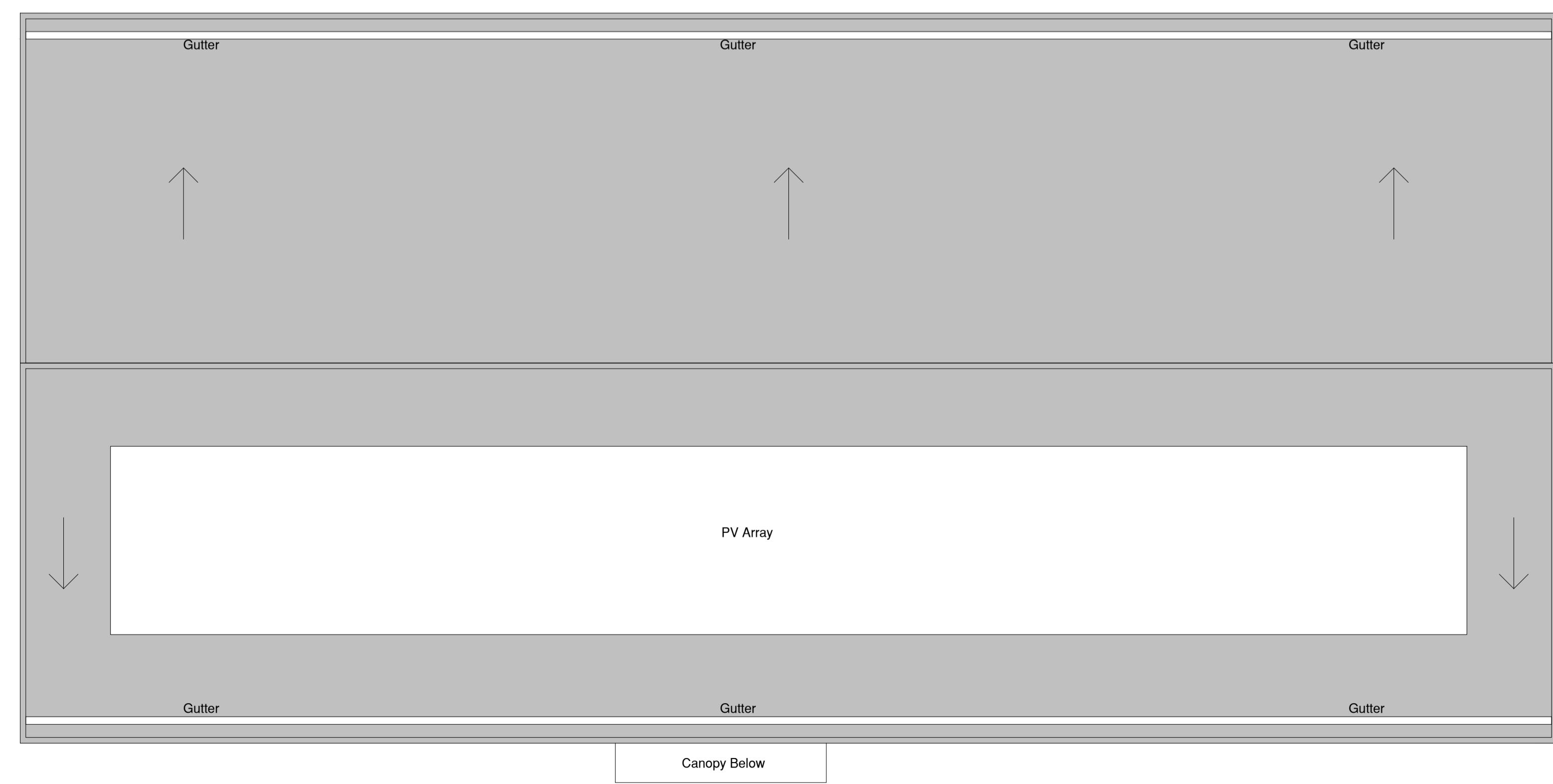
728m² Footprint (GEA)
(687 GIA)

- Lobby - 10m²
- Reception/Cafe/Seating Area - 67.6m²
- Office - 7.3m²
- Circulation - 42.5m²
- Activity Space 1 - 112m²
- Store 1 - 5.7m²
- Activity Space 2 - 54.7m²
- Store 2 - 7.4m²
- Store 3 - 7.4m²
- Kitchen - 23.1m²
- Cleaner 1 - 1.9m²
- Male WC's - 20m²
- Female WC's - 18.5m²
- Changing Places Room - 12m²
- Change 1 - 20.1m²
- Change 1 Showers/WC - 10.6m²
- Change 2 - 19.2m²
- Change 2 Showers/WC - 10.6m²
- Officials/Unisex Change - 7.2m²
- Lockers - 20.9m²
- Cleaner 2 - 2m²
- Access WC - 3.2m²
- WC - 2.5m²
- WC - 2.5m²
- Studio 1 - 75.7m²
- Studio 1 Store - 5.2m²
- Studio 2 - 56m²
- Studio 2 Store - 3.7m²
- Plant Room - 18.4m²
- Service Void - 3.87m²

Room Areas Total 651.77m²



01 Proposed Floor Plan
1:100



02 Proposed Roof Plan
1:100

P2	Changing room layout and shower provision amended. Accessible WC added opposite changing rooms. Officials change added. All inline with comments from Sport England.	18/09/23	BST
P1	First Issue	08/08/23	BST
Rev	Notes	Date	Issued By



SERVICE
B.E.S.T

PROJECT
Parkside Sports & Community Centre

TITLE
Proposed Plans

PROJECT REF	DRAWING REFERENCE	REV
SCALE	DISCIPLINE	SHEET SIZE
PURPOSE OF ISSUE	PLANNING APPROVAL	Drawn Checked
		BST