

RESPONSIBILITY IS NOT ACCEPTED FOR OTHERS SCALING DIRECTLY FROM THIS DRAWING. DO NOT SCALE FROM THIS DRAWING. USE WRITTEN DIMENSIONS ONLY.

0m 0.5 1.0 1.5 3.0m ORIGINAL SHEET SIZE **A1**
1:50

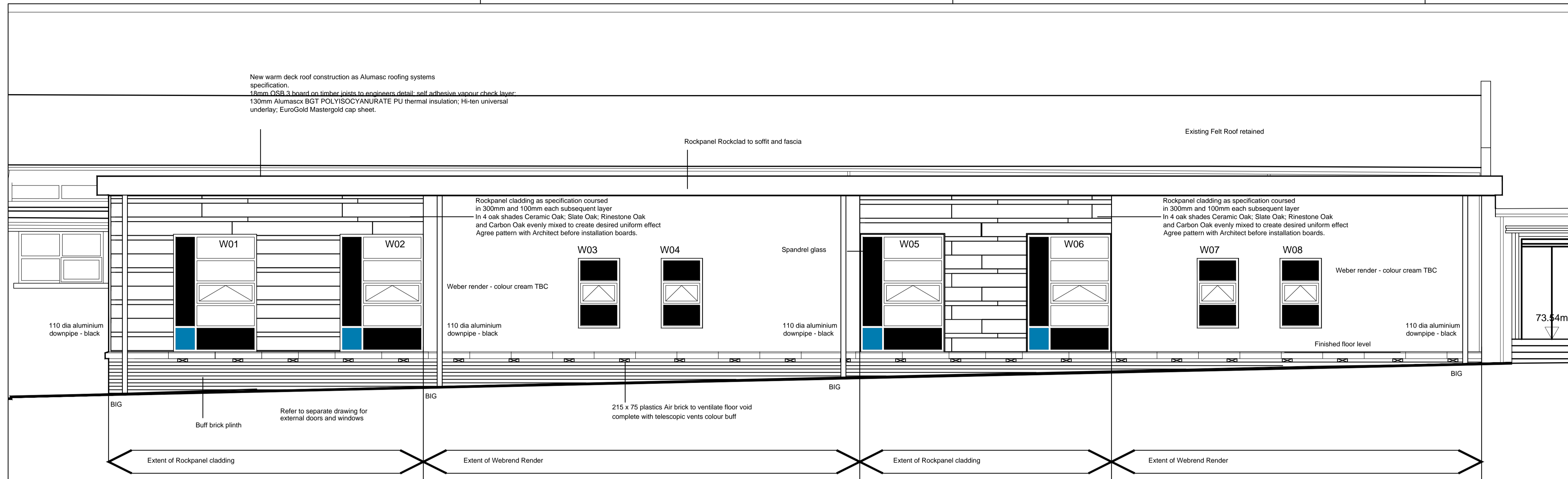


THIS DRAWING IS PRODUCED FOR USE IN THIS PROJECT ONLY AND MAY NOT BE USED FOR ANY OTHER PURPOSE. NPS PROPERTY CONSULTANTS LTD ACCEPT NO LIABILITY FOR THE USE OF THIS DRAWING OTHER THAN THE PURPOSE FOR WHICH IT WAS INTENDED IN CONNECTION WITH THIS PROJECT AS RECORDED IN THE PURPOSE FOR ISSUE AND FILE STATUS CODE.

THIS DRAWING MAY NOT BE REPRODUCED IN ANY FORM WITHOUT PRIOR WRITTEN AGREEMENT OF NPS PROPERTY CONSULTANTS LTD.

© CROWN COPYRIGHT AND DATABASE RIGHTS 2016 ORDNANCE SURVEY LICENCE NUMBER 10002284

Notes:

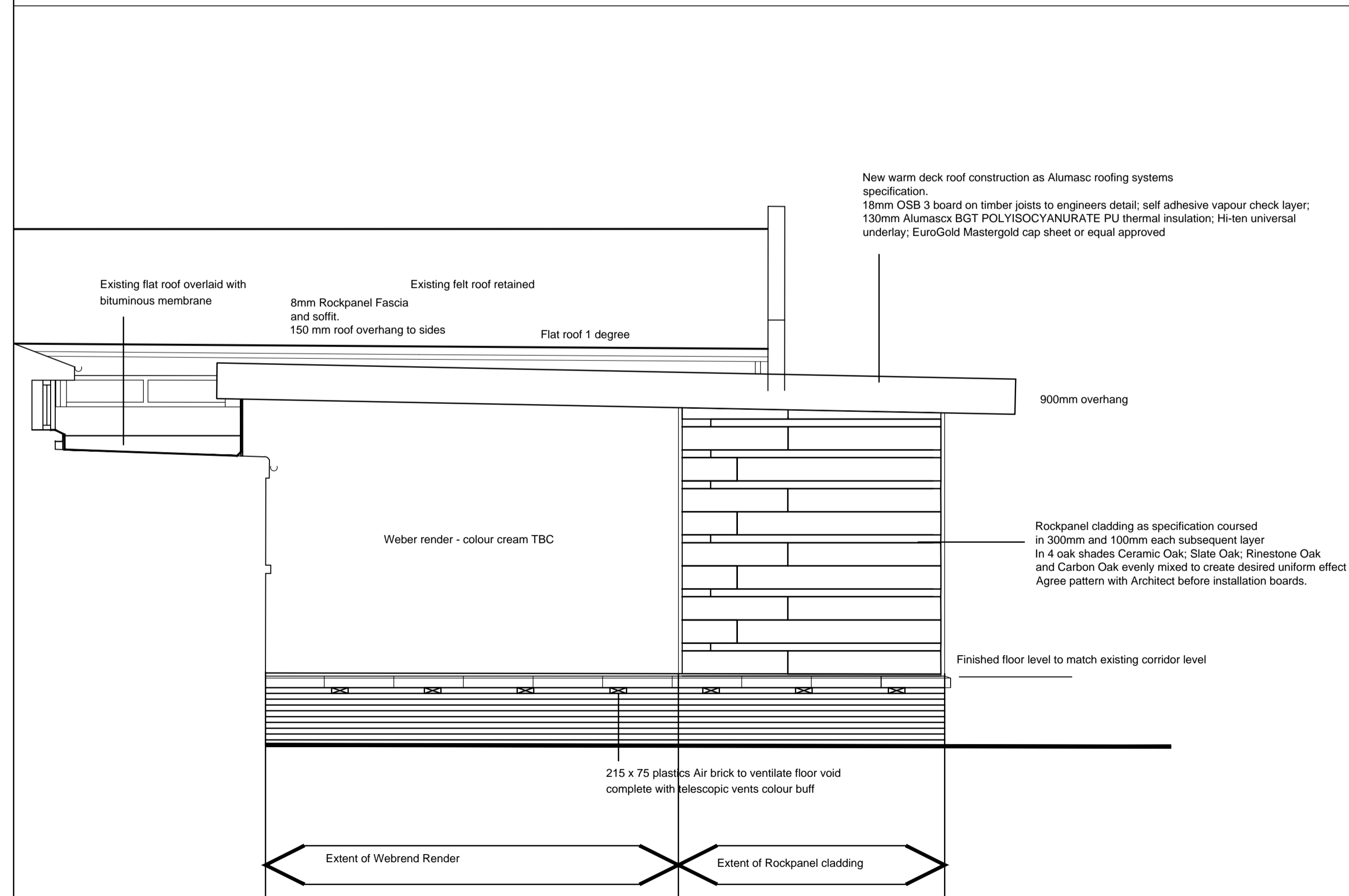


FRONT ELEVATION

Wall construction:
Plinth - 102.5mm Buff facing brick; 100mm cavity with full fill cavity insulation Celotex CF5000 97mm board or equal approved; 100mm 7N blockwork (lambda 1.13). Internal finish 13mm plasterboard on dabs. U-value 0.18 w/m2 k.

Wall construction:
Rendered wall - 3mm thick Weberend LAC coat. Lay in meshcoat and apply 2-3mm of wecoat LAC. Primer. Final coat Weber Pral Mone coat coloured through render total thickness 28mm on 100mm blockwork 7N block; 100mm cavity with full fill cavity insulation Celotex CF5000 97mm board or equal approved; 100mm 7N blockwork (lambda 1.13). Internal finish 13mm plasterboard on dabs. U-value 0.18 w/m2 k.
Refer to elevations for locations

Wall construction:
Rockpanel woods - 8mm Rockpanel woods durable board. Colour Rimestone Oak/Ceramic Oak/ Slate Oak/ Carbon Oak. Laid Horizontal first board 300mm wide and second board 100mm wide each subsequent layer fixed to min 75mm wide x 38mm battens min 50mm wide x 38mm wide battens at intermediate supports on 100mm 7 N blockwork; 100mm cavity with full fill cavity insulation Celotex CF5000 97mm board or equal approved; 100mm 7N blockwork (lambda 1.13). Internal finish 13mm plasterboard on dabs. U-value 0.18 w/m2 k.
Refer to elevations for locations



SIDE ELEVATION

FIRST ISSUE						
P1						
COMMENT						
REV	DRAWN	DATE	CHECKED	DATE	APPROVED	DATE
<small>NPS Barnsley Ltd Gateway Plaza, Sackville St, Barnsley, South Yorkshire, S70 2RD, Tel: 01226 774605; Email: barnsley@nps.co.uk; web:www.nps.co.uk</small>						

CLIENT
BMBC EDUCATION

PROJECT
**Hunningley Primary School Phase 2
Proposed 2 No classrooms plus internal alterations**

TITLE
Proposed elevations

SCALES 1:50	DISCIPLINE ARCHITECT	PROJECT NUMBER 17-1-1051
DRAWING NUMBER NPS-00-00-DR-A-(00)-026	REV CODE P 1	
STATUS CODE D2	PURPOSE OF ISSUE TENDER	DRAWN BY PHEPP