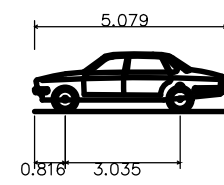
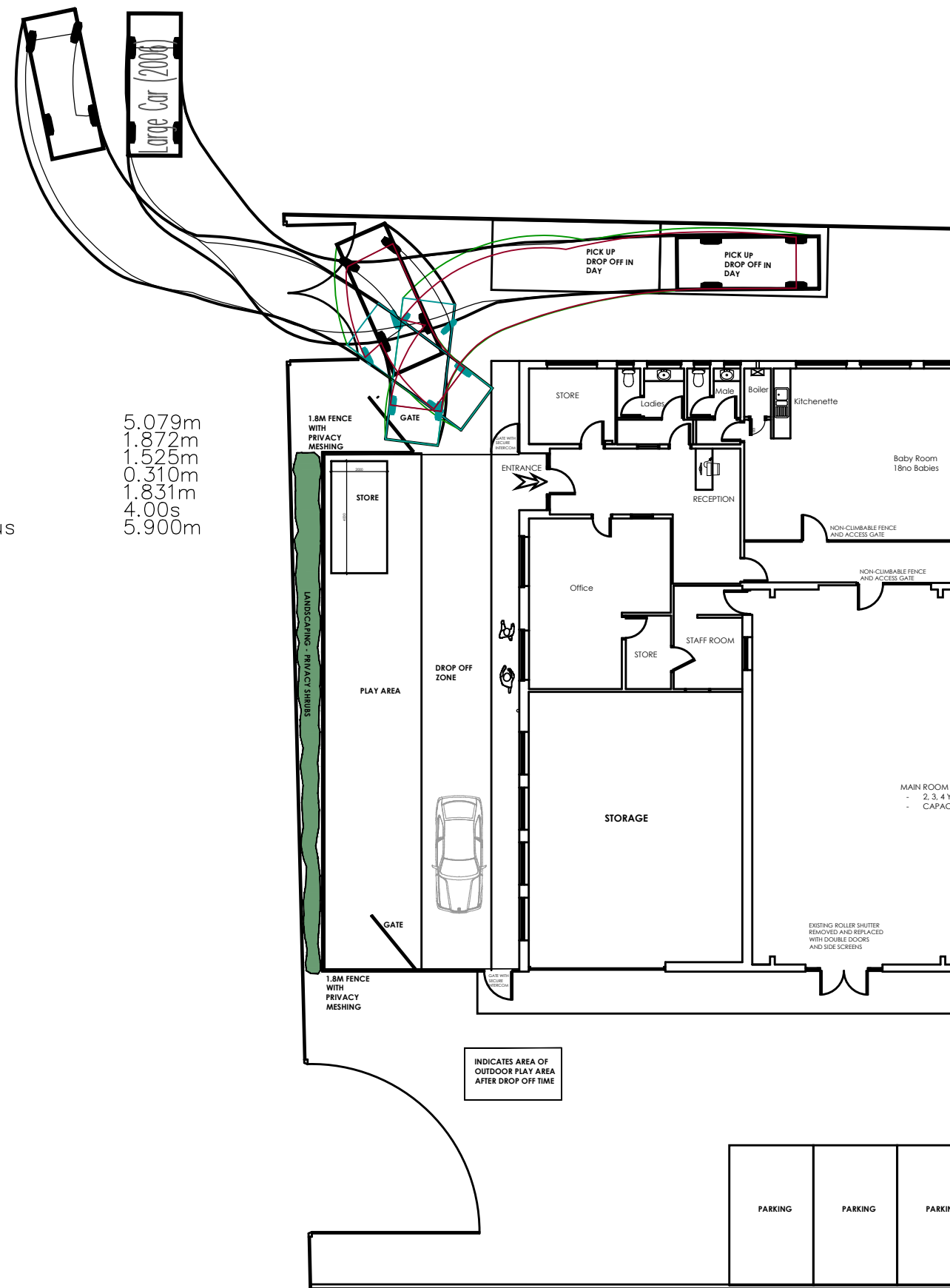


Estate Car (2006)
Overall Length 4.710m
Overall Width 1.804m
Overall Body Height 1.442m
Min Body Ground Clearance 0.207m
Max Track Width 1.756m
Lock to lock time 4.00s
Kerb to Kerb Turning Radius 5.950m

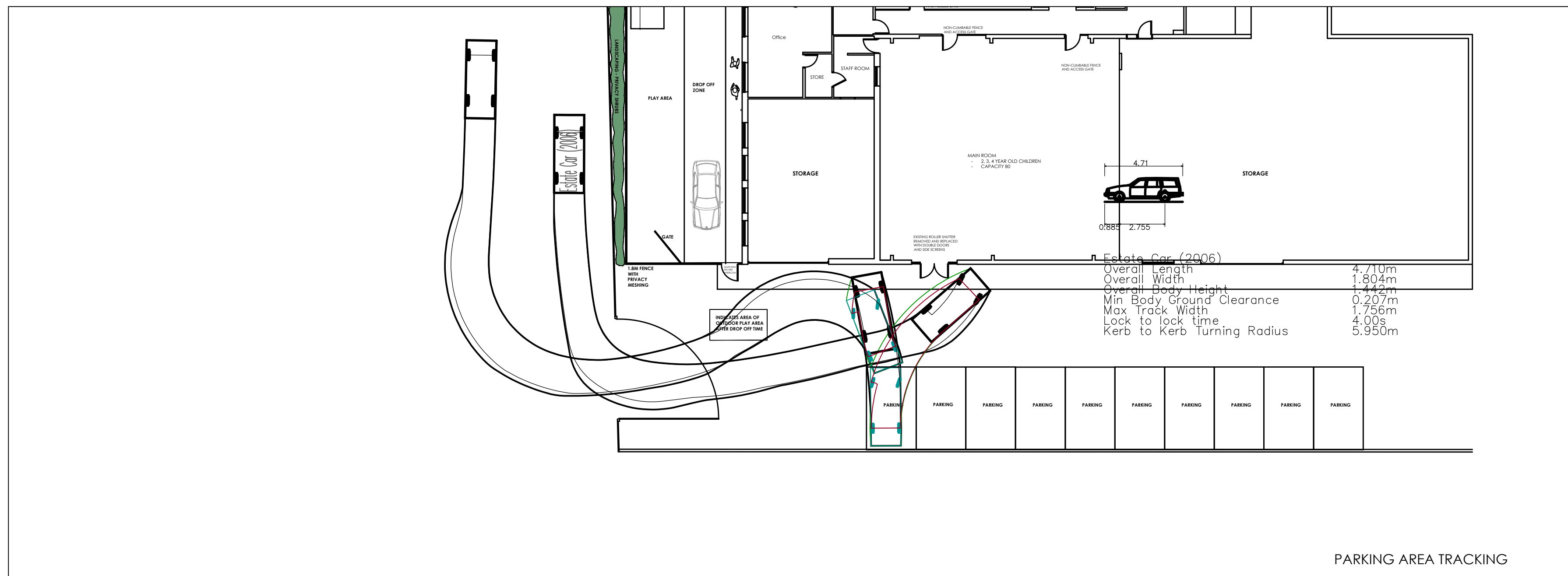
MORNING AND AFTERNOON COLLECTION TRACKING



Large Car (2006)
Overall Length 5.079m
Overall Width 1.872m
Overall Body Height 1.525m
Min Body Ground Clearance 0.310m
Max Track Width 1.831m
Lock to lock time 4.00s
Kerb to Kerb Turning Radius 5.900m



DAYTIME COLLECTION TRACKING



PARKING AREA TRACKING

This drawing is copyright of DART Engineers Ltd and must not be copied or reproduced in any way without written consent.
DO NOT SCALE OFF THIS DRAWING

Status

No.

Revision

Date

Drwn

DART

ENGINEERS LTD

CIVIL AND STRUCTURAL
ENGINEERING

CONTACT

e: andy@dart-engineers.com
e: rob@dart-engineers.com
m: 07725 481902
w: www.dart-engineers.com

CLIENT

White Argus

PROJECT

Plot 2, Carlton Industrial Estate,
Industry Road, Carlton

DRAWING TITLE

Tracking Layout - Access

DrawnAD

ChkdRT

DateDec 2024

Scale1:200

Sheet SizeA1

Drawing No.24663-DR-C-0100

RevisionP1