

## Planning Sheet Notes:

Type and style of roof tiles and facing materials including external features such as canopies, cills, heads, fascia, windows and doors as site specification and to Local Authority Approval. SHOWN INDICATIVE ONLY ON THIS PLAN



Front Elevation.

1 : 100



Left Elevation.

1 : 100

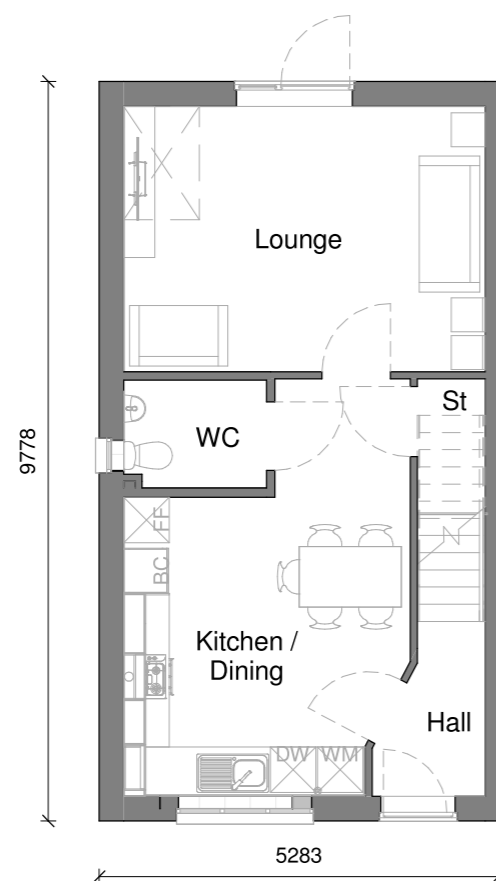


Rear Elevation.

1 : 100

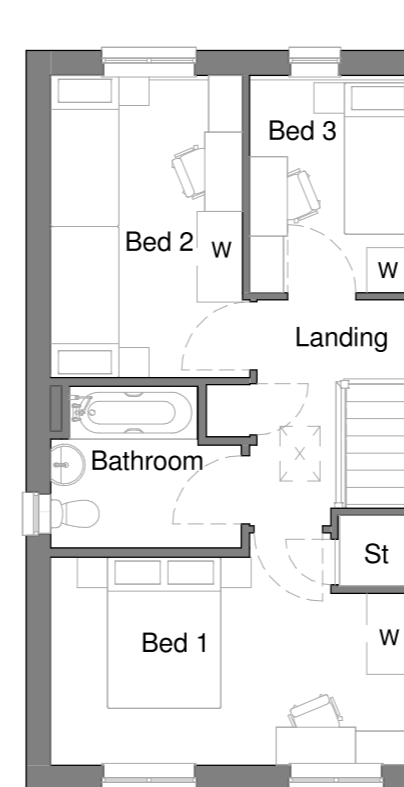
Area Schedule - Sales		
Name	Area	Area Sq Ft
Ground Floor GIA	43.61 m <sup>2</sup>	469.37 SF
First Floor GIA	43.61 m <sup>2</sup>	469.37 SF
	87.21 m <sup>2</sup>	938.73 SF

Area Schedule - Build		
Name	Area	Area Sq Ft
Ground Floor Build	44.30 m <sup>2</sup>	476.88 SF
First Floor Build	44.30 m <sup>2</sup>	476.88 SF
	88.61 m <sup>2</sup>	953.75 SF



Ground Floor.

1 : 100



First Floor.

1 : 100

House Type Range		Sub Range	
2018 Range		DQS	
Scale at A3	Date	Drawn	Checked
As indicated	03/10/2017	JF	NTL
Pack Title			
The Marlow Working Drawing Pack			
Sheet Name			
Planning Drawings			
House Type Code	Plotting	Handing	Style Issue
MARLOW	END	AS	BB01
Project	Pack No.	Rev	Sheet
18CORE	2030	1	201

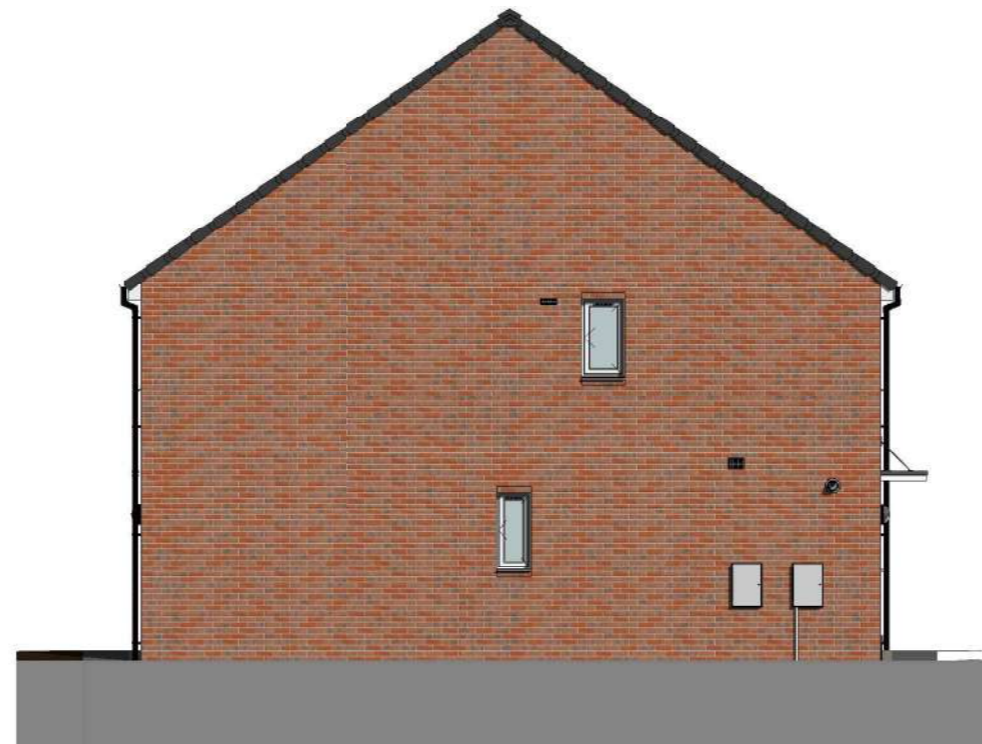
For internal use only  
938.73 ft<sup>2</sup> / 87.21 m<sup>2</sup>

Marlow

3 Bed 5 Person



C=83 R=12  
M=24 G=142  
Y=50 B=136  
K=4



#### House Type Description.

**The Marlow three-bedroom home has been cleverly designed to make everyday life easy and stress-free.**

One of our innovative Lifetime Homes, the Marlow uses the space to not only give you generous-sized rooms, but also make moving from room to room easy. With level access throughout, once inside, the hallway leads you into the modern kitchen/diner. A great space for cooking, eating and getting everyone together, it's the real heart of the home. Head past the downstairs WC and built-in storage and you'll enter the lounge. With a glazed door onto the rear garden, this room is bathed in natural light.

Upstairs, off the wide landing, you'll find three bedrooms, a stylish bathroom and even more built-in storage. And if you don't need the third bedroom, it would make a great playroom or dressing room.

#### Key Features.

- Three-bedroom semi-detached home
- Specially designed Lifetime Home
- 939 sq. ft. of living space
- Modern kitchen/diner
- Lounge with glazed door onto garden
- Downstairs WC
- Built-in storage on both floors
- Make your home your own with **Keepmoat Options**
- Got a home to sell? With **EasyMove** we can help
- Move in with just a 5% deposit with **Help to Buy**