

NOTE

- THIS DRAWING IS COPYRIGHT GSDA LTD
- THE CONTRACTOR MUST NOT SCALE FROM THE DRAWING ALL DIMENSIONS TO BE TAKEN FROM DIMENSION STRINGS.
- WHERE ANY DISCREPANCIES ARE FOUND BETWEEN DIMENSIONS THESE MUST BE BROUGHT TO THE ATTENTION OF THE ARCHITECTS FOR RESOLUTION.
- WHERE DISCREPANCIES EXIST BETWEEN REFERENCE OR ASSEMBLY DRAWINGS & DETAIL DRAWINGS, THE LATTER TAKE PREFERENCE.

MATERIALS KEY

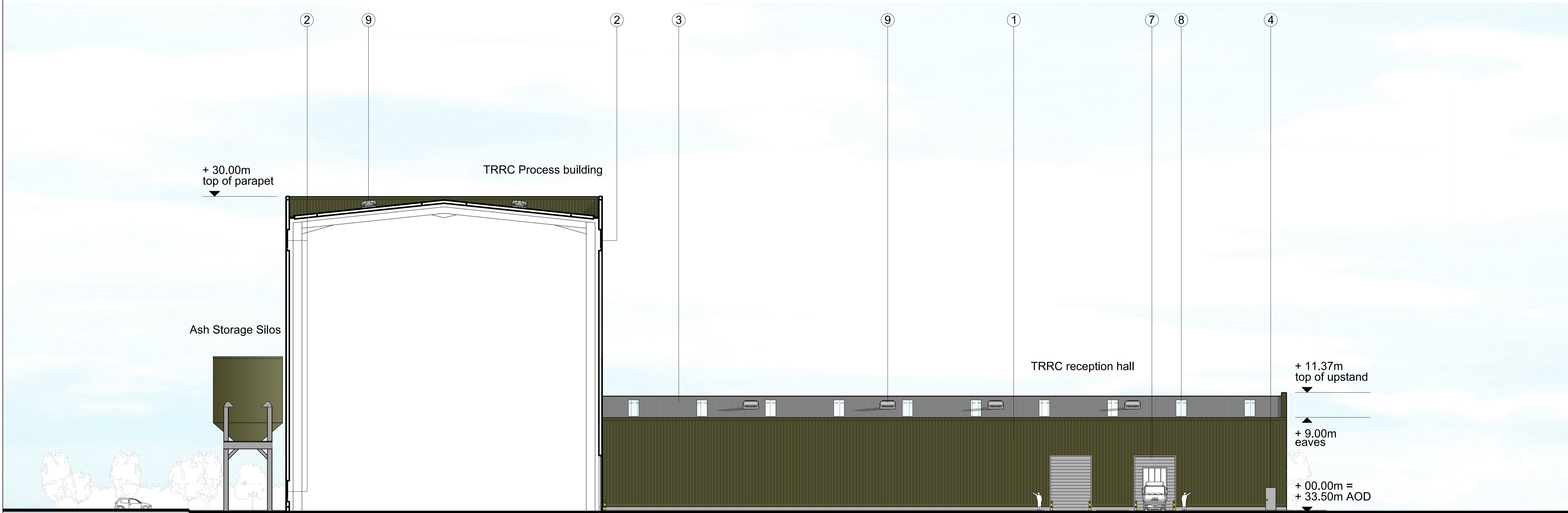
- Plastic Coated Steel Cladding, Trapezoidal Profile Colour: Olive Green (RAL 100 30 20)
- Metal Ventilation Louvers Colour: Olive Green (RAL 100 30 20)
- Plastic Coated Steel Roof System, Trapezoidal Profile Colour: Pure Grey (RAL 000 55 00)
- PPC Aluminium Window Frames And Doors Colour: Merlin Grey (RAL 180 40 05)
- Grey Engineering Brick Plinth
- Metal Stack Colour: Oyster (RAL 7035)
- Metal Roller Shutter Doors
- In-Plane Polycarbonate Rooflight System
- Roof Vent Cowls

Note: All materials, finishes and colours will be as stated or similar approved

KEY

- Site boundary
- Adjacent site
- 2.5m wide hedge/ tree line perimeter

East elevation - 1



West elevation - 2

A	150204	Issued for planning
-	150123	Issued for planning

FOR PLANNING

**GSDA**  
 Highlands House, Office 101A, 165 The Broadway, Wimbledon, London, SW19 1NE  
 T: 020 8544 8085

HOUGHTON MAIN REC PROJECT

Proposed TRRC Process building elevations 3 DRAWING

1:200@A1	150204
1:400@A3	DATE
SCALE	DATE
1313_PL008	A GS
DWG. NO.	REVISION CHECKED