

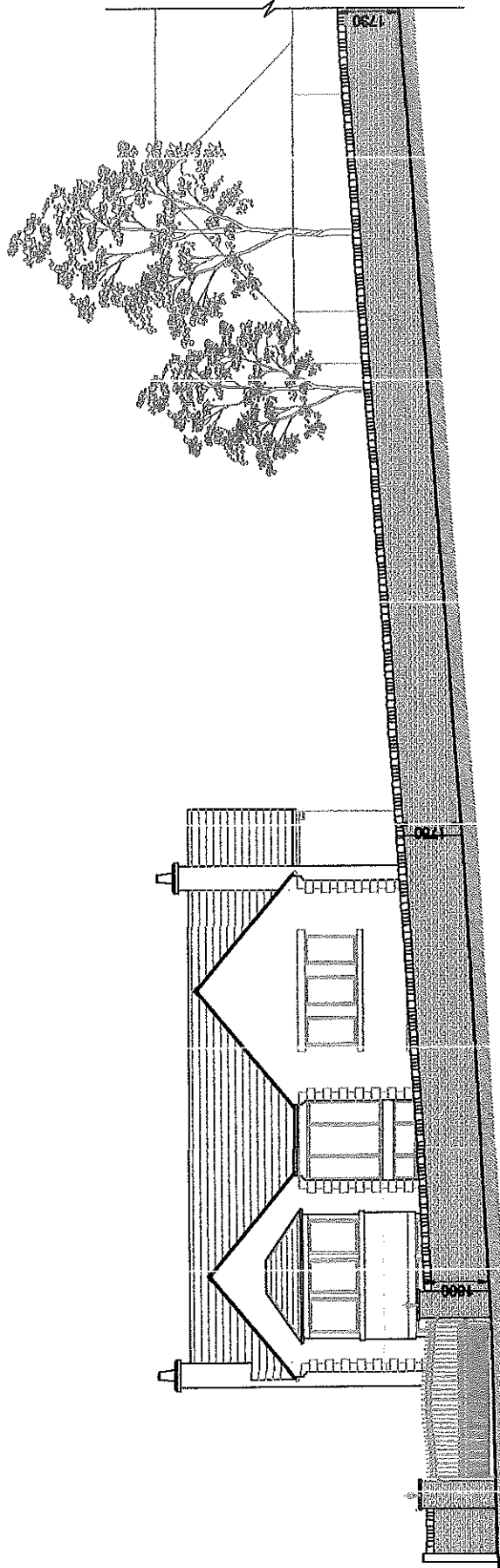
When installing a fence, the following instructions should be followed:  
 1. All fences shall be constructed in accordance with the applicable local, state and federal codes.  
 2. The fence shall be constructed in accordance with the applicable local, state and federal codes.  
 3. The fence shall be constructed in accordance with the applicable local, state and federal codes.  
 4. The fence shall be constructed in accordance with the applicable local, state and federal codes.  
 5. The fence shall be constructed in accordance with the applicable local, state and federal codes.

DATE:	BY:	DATE:

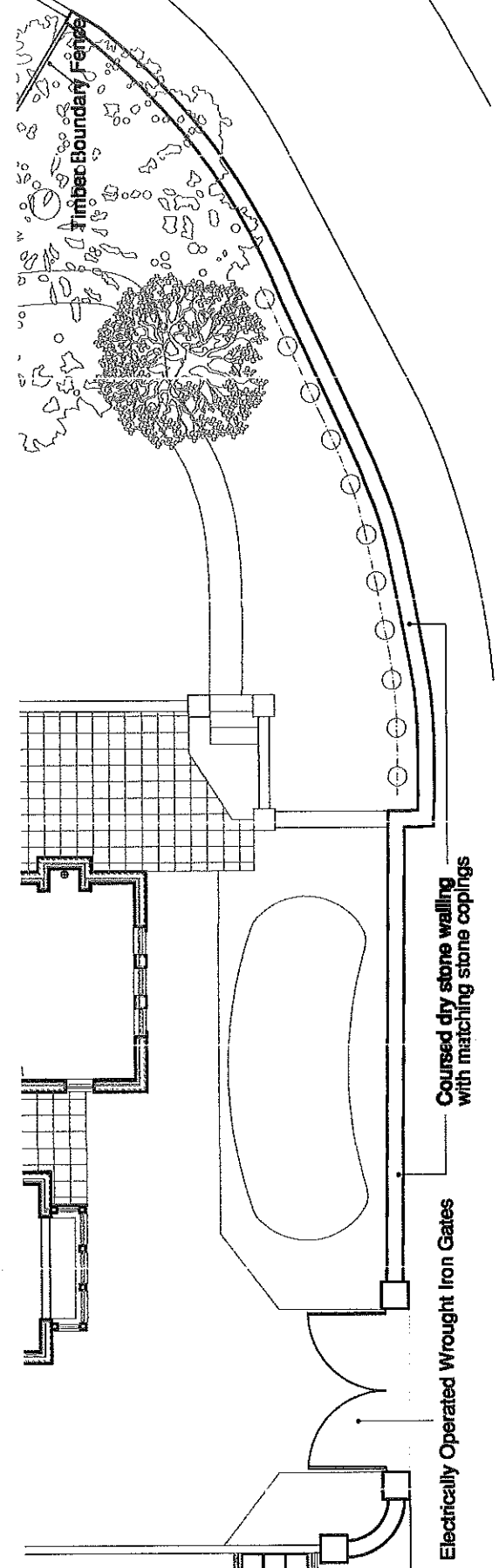


**FIFTH PARTNERSHIP**  
 COMMERCIAL - RESIDENTIAL - INDUSTRIAL  
 11111 11111 11111  
 11111 11111 11111  
 11111 11111 11111  
 11111 11111 11111  
 11111 11111 11111

PROJECT NO.	DATE

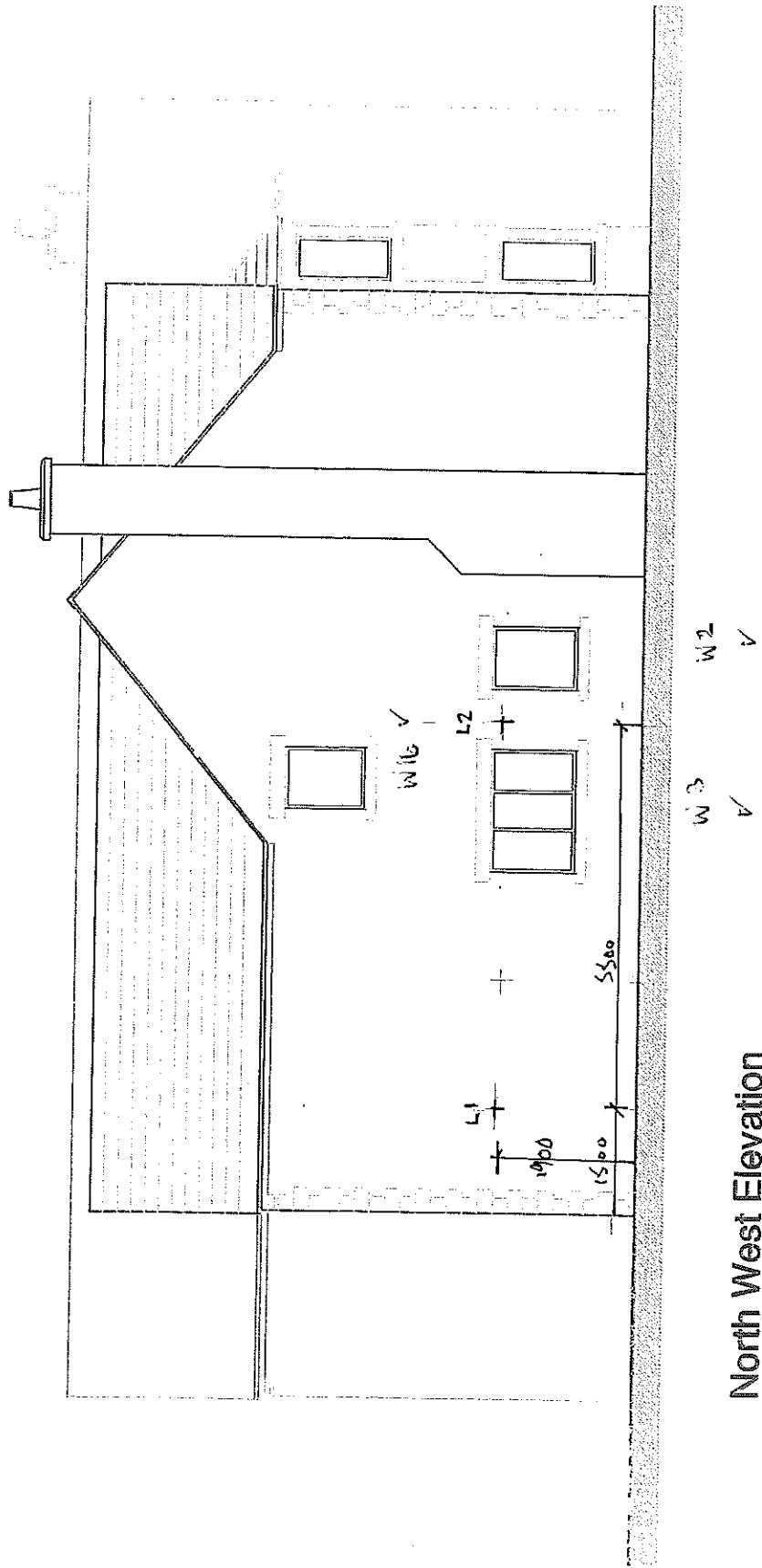


Elevation Showing Extent of Dry Stone Boundary Wall



Site Plan Showing Extent of Dry Stone Boundary Wall

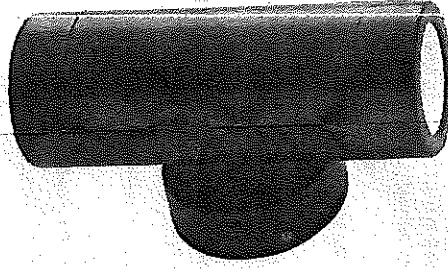
1 TINY PALE HOUSE, CAWTHORPE LANE  
REFERENCE 2023/0557



North West Elevation

# Odyssey

ST5008BK, ST5008S, ST5008W



## Technical data

Supply Voltage: 220-240 V~, 50 Hz

Bulb Type: 2 x Max. 7W LED GU10



Conformity with all relevant UKCA Directive requirements.



Conformity with all relevant EC Directive requirements.



This is a Class 1 product and must be earthed.



Waste electrical products should not be disposed of with household waste. Please recycle where facilities exist. Check with your Local Authority or local store for recycling advice.



This product is suitable for dimming.



This product is rated at IP65.

## Care and Safety

For your safety, always switch off the power supply before changing lightbulbs, adjusting spotlight heads or cleaning.

Do not use solvents or abrasive cleaners as these could damage the finish.

For ST5008S, in normal circumstances, stainless steel is very resistant to corrosion. It does however require maintenance to preserve the high quality appearance. Wash the product with warm soapy water, removing all surface deposits. Rinse with clear water and with a soft cloth, wipe dry.

In some cases, surface corrosion may arise after installation. This is normally caused by tiny iron particles left behind after the brushing process when finishing.

Wash and dry as detailed above. Then with a soft cloth soaked with a protective oil, wipe all over.

However if the product is subject to extreme environmental conditions such as marine locations, industrial pollution and acid rain these maintenance procedures should be carried out around four times a year. For severe corrosion, non-abrasive cream cleaners or proprietary stainless steel cleaners should be used to remove the corrosion. Wash and dry as detailed above.

Then with a soft cloth soaked with a protective oil, wipe all over.

Glass parts-Remove and wash in warm water or just use a damp cloth. Do not use abrasive materials as these will damage the finish.

**Do not clean the units with a pressure washer.**



The shade must be replaced immediately should the shade become cracked or damaged. This fitting must not be used without the shade in place.

V4 05/05/2022  
UK Manufacturer: BH17 7BY  
EU Manufacturer: Brilliant AG,  
Bilfingerstrasse 1, D-27442 Garenburg

saxby  
lighting

www.saxbylighting.com

saxby  
lighting