








THIS DRAWING IS TO BE READ IN CONJUNCTION WITH ALL OTHER HBL DRAWINGS ISSUED FOR THIS PROJECT

KEY

-  Proposed Storm Water Manhole
-  Proposed Storm Water Sewer
-  Foul Water Manhole
-  Proposed Foul Water Sewer
-  Proposed Combined Water Sewer
-  Proposed Combined Water Manhole
-  Existing Combined Water Sewer

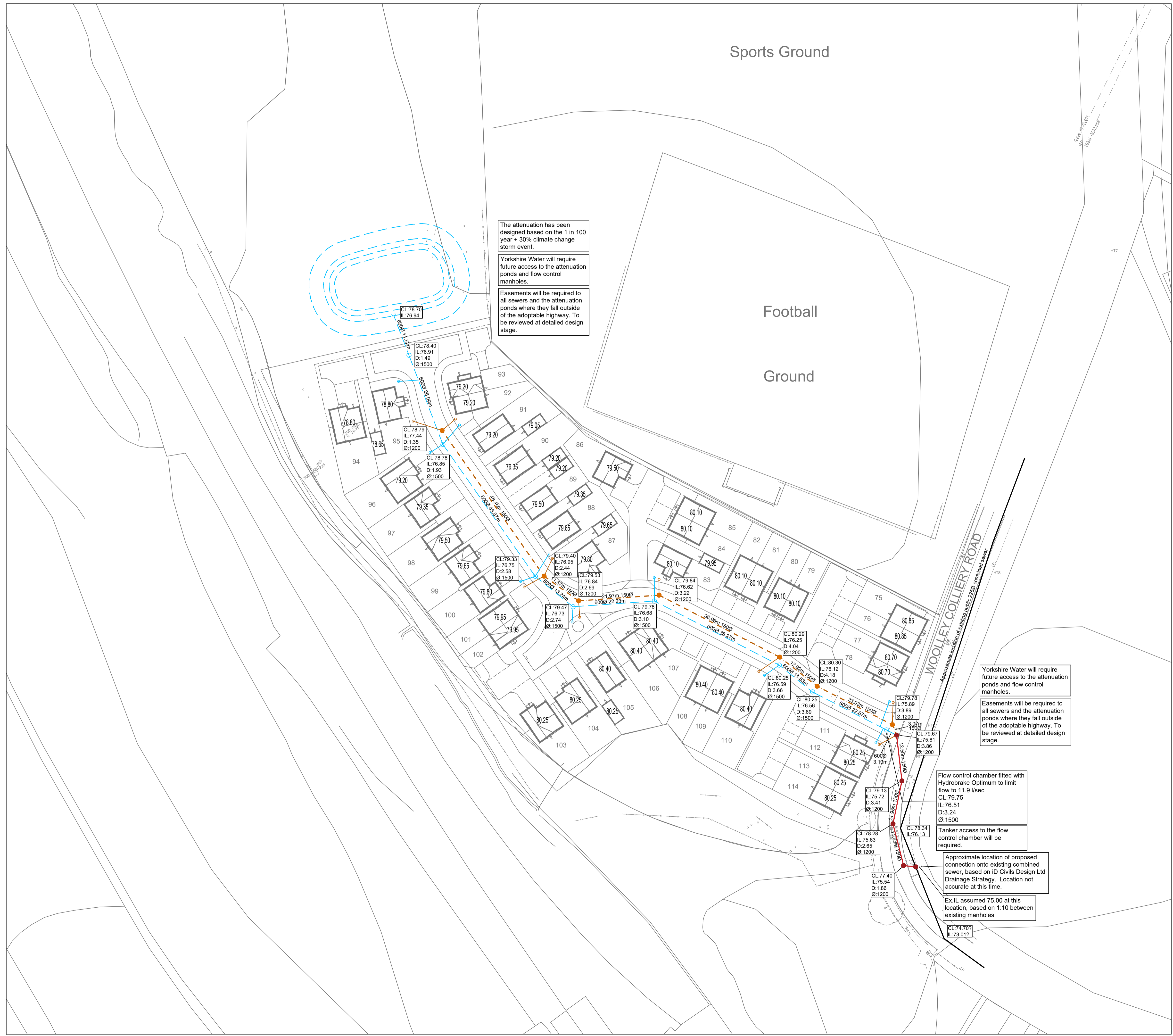
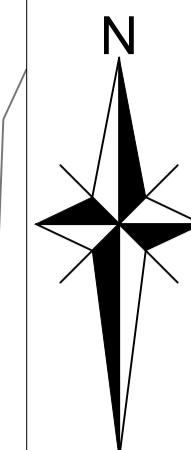
NOTES:

1. APPLICATION SITE AREA 2.94 Ha (NORTHERN PARCEL) AND 1.27Ha (SOUTHERN PARCEL).
2. SITE COORDINATES: 431183,410774
3. PROPOSED MAXIMUM DISCHARGE RATE FOR SURFACE WATER FROM APPLICATION SITE - 11.9L/S.
4. DRAINAGE DESIGN CRITERIA = 100YR RETURN PERIOD WITH 30% CLIMATE CHANGE ALLOWANCE.
5. NO TREES TO BE PLANTED WITHIN 5m OF DRAINAGE
6. CV VALUES FOR CALCULATIONS: 1.0

SCHEMATIC DRAINAGE DESIGN - SUBJECT TO:

1. APPROVAL OF REGULATORY AUTHORITIES
2. CCTV CONNECTIVITY AND CONDITION SURVEY OF EXISTING DRAINAGE NETWORK MAY BE REQUIRED FOR CONNECTION.
3. AGREEMENT OF DISCHARGE RATE.
4. CONFIRMATION OF EXISTING ASSETS (INCLUDING LOCATION, DEPTHS, CONDITION ETC)
5. DETAILED DRAINAGE NETWORK DESIGN AND HYDRAULIC CALCULATIONS.

ALL DRAINAGE PROPOSALS ARE SUBJECT TO A DETAILED ASSESSMENT BY HBL ASSOCIATES. NO INFORMATION CONTAINED WITHIN THIS DRAWING SHOULD BE USED FOR THE PURPOSES OF CONSTRUCTION. ALL DRAINAGE LEVEL INFORMATION IS SUBJECT TO A DETAILED ASSESSMENT OF THE EXISTING NETWORK AND WATERCOURSE FEATURES



The attenuation has been designed based on the 1 in 100 year + 30% climate change storm event.

Yorkshire Water will require future access to the attenuation ponds and flow control manholes.

Easements will be required to all sewers and the attenuation ponds where they fall outside of the adoptable highway. To be reviewed at detailed design stage.

Yorkshire Water will require future access to the attenuation ponds and flow control manholes.

Easements will be required to all sewers and the attenuation ponds where they fall outside of the adoptable highway. To be reviewed at detailed design stage.

Flow control chamber fitted with Hydrobrake Optimum to limit flow to 11.9 l/sec
CL-79.75
IL-76.51
D-3.24
Ø-1500

Tanker access to the flow control chamber will be required.

Approximate location of proposed connection onto existing combined sewer, based on iD Civils Design Ltd Drainage Strategy. Location not accurate at this time.

Ex.I.L assumed 75.00 at this location, based on 1:10 between existing manholes

REV.	DATE	DRAWN	DESCRIPTION	CHKD	APPRD

STATUS	DESCRIPTION	STATUS

FOR INFORMATION S1



Brook House
Weybrook Road,
Manchester M19 2QD
+44 (0)161 432 9977 | www.hbl.td
Consulting Civil & Structural Engineers

PROJECT: **WOOLLEY COLLIERY**

DRAWING TITLE: **PROPOSED DRAINAGE APPRAISAL SHEET 3 OF 3**

CLIENT: **HARRON HOMES**

HBL REF.	DATE	SCALE(S)	A1
10701	JUN'24	1:500	A1

DRAWN	CHECKED	APPROVED	REV.
PC	RJ	RJ	P01

DRAWING No. **10701-HBL-XX-XX-XX-X-SK03**