

GREEN CORRIDOR CLOSE-UP SECTION A-A

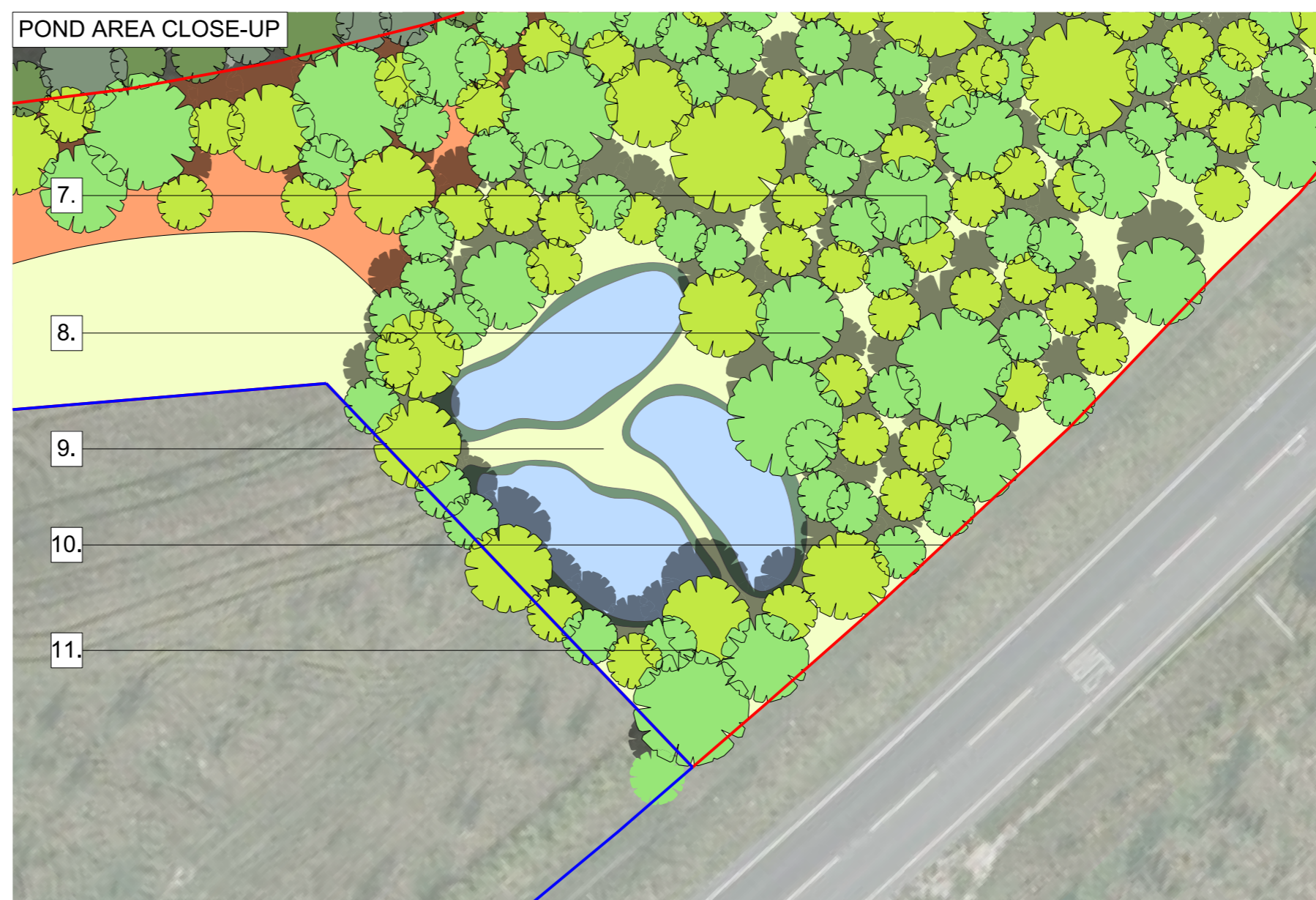


GREEN CORRIDOR CLOSE-UP SECTION B-B

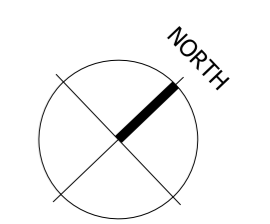


1. Anticipated reptile translocation to Houghton Washland (RSPB).
2. Vegetation clearance to avoid bird breeding season.
3. PVC drift fencing to aid reptile catch.
4. Screen planting to the west to supplement existing hedge line where possible, using native species to provide habitat and mitigate views of the site.
5. Appropriate management techniques would be utilised to establish semi naturalised grassland with areas of wetland wildflower meadows to encourage the introduction of mosses and other indigenous wetland species.
6. Landscaping improvements including tree planting
7. Pitfall Traps 1 per 10m
8. Translocation area for marshy grassland turfs
9. Suite of small ponds and scrapes, planted with indigenous reeds, grasses and other marginal plants.
10. Herpetosure reptile fencing
11. Orchid plug planting area

POND AREA CLOSE-UP



- NOTE
1. THIS DRAWING IS COPYRIGHT GSDA LTD.
  2. THE CONTRACTOR MUST NOT SCALE FROM THE DRAWING ALL DIMENSIONS TO BE TAKEN FROM DIMENSION STRINGS.
  3. WHERE ANY DISCREPANCIES ARE FOUND BETWEEN DIMENSIONS THESE MUST BE BROUGHT TO THE ATTENTION OF THE ARCHITECTS FOR RESOLUTION.
  4. WHERE DISCREPANCIES EXIST BETWEEN REFERENCE OR ASSEMBLY DRAWINGS & DETAIL DRAWINGS, THE LATTER TAKE PREFERENCE.



- KEY
- Site Boundary
  - Harworth Residual Land
  - Alkane Lease Boundary
  - Harworth Residual Land
  - Existing Vegetation
  - Proposed Woodland / Shrub Planting
  - Proposed Woodland Edge Planting
  - Grassland
  - Ponds and Marginal Planting
  - Landscaped Green Corridor

A	150130	Issued for planning
-	150123	Issued for planning

FOR PLANNING

**GSDA**  
LANDSCAPE ARCHITECTS  
 Highlands House, Office 101A, 165 The Broadway, Wimbledon, London, SW19 1NE  
 T: 020 8544 8065

HOUGHTON MAIN REC

PROJECT  
 Landscaping Masterplan  
 Green Corridor and  
 Ponds Close Up  
 DRAWING

1:400@A1 150130  
 1:800@A3 DATE

1313_PL037	A	GS
DWG. NO.	REVISION	CHECKED