

- LEGEND**
- 2no. Plan Type A ('Holly') 2B/3P Bungalow at 77.5m<sup>2</sup> approx. (integrated single garage at 16m<sup>2</sup> in addition)
  - 3no. Plan Type Aa ('Birch') 3B/5P Bungalow at 98m<sup>2</sup> approx. (single garage at 16m<sup>2</sup> in addition)
  - 6no. Plan Type B ('Hawthorn') 3B/5P 2 storey House at 89m<sup>2</sup> approx.
  - 17no. Plan Type C ('Poplars') 4B/6P 2 storey House at 148m<sup>2</sup> (integrated single garage at 16m<sup>2</sup> in addition)
  - 10no. Plan Type D ('Malherb') 4B/6P 2 storey house at 135m<sup>2</sup> (integrated single garage at 16m<sup>2</sup> in addition)
  - 13no. Plan Type E ('Swaine') 3B/5P 2 storey house at 126.86m<sup>2</sup> (integrated single garage at 16m<sup>2</sup> in addition)
  - 11no. Plan Type F ('Chestnut') 4B/7P 2 storey house at 128m<sup>2</sup> (integrated single garage at 16m<sup>2</sup> in addition)
  - 16no. Plan Type G ('Aspen') 3B/5P 2 storey house at 88.34m<sup>2</sup>
  - 4no. Plan Type H ('Willows') 3B/5P 2 storey house at 96m<sup>2</sup>
  - 4no. Plan Type L ('Elm') 2B/4P 2 storey house at 78m<sup>2</sup>
  - 6no. Plan Type M ('Rowan') 3B/5P 2 storey house at 88.34m<sup>2</sup> (integrated single garage at 16m<sup>2</sup> in addition)
  - 5no. Plan Type N ('Mountain Ash') 3B/6P 2.5 storey house at 128m<sup>2</sup> (integrated single garage at 16m<sup>2</sup> in addition)
  - 97no. Dwellings in total
  - Properties have 2no. designated car parking spaces, or a single garage and designated parking space
  - Site area: 5.57ha approx. (13.78 acres) (Inclusive of Green Belt undeveloped land)
  - Density: 17.41 dwellings per hectare

- Ibstock red brick Mercia Antique
- Ibstock buff mix brick Argyll Multi
- Ibstock buff brick Caledonian buff blend
- Accompanied with a 'c' to the house type reference denotes a corner plot variation
- Denotes raised plateau to aid traffic calming and indicate shared surface residential access
- Denotes Visibility Splay
- Denotes Sales area
- Denotes area likely to be banked
- Denotes vegetation buffer to North and North-East site boundaries. See drawing P103 Proposed Landscaping Plan for detail
- Denotes spaces formed for public use and identification within the development
- Denotes public open space for informal play. Natural overlooking from Plots 84 - 89 to the North and existing properties on Windhill Avenue
- Denotes space for children's play area. Space and equipment TBC. Natural overlooking from Plots 84 - 89 to the North and existing properties on Windhill Avenue
- Denotes footpath access
- Denotes managed area of undeveloped Green Belt land.

P	22-01-10	Amendments made to the overall site layout in accordance with comments made during meeting at SBAC on 14-01-10	AD	AD
N	06-01-10	Amendments made to incorporate comments made by the planning department dated 15 December 2010.	AD	AD
M	23-10-10	Amendments made to layout to accommodate 10m distance largely between the site boundary and property, as feasibility was possible	AD	AD
L	09-10-10	Amendments made to plot 44 and 73 layout following revision made to the positioning of the site boundary as requested by SBAC	AD	AD
K	16-08-10	Layout updated for house type G 'Aspen'	AD	AD
J	01-08-10	Visibility splays shown and minor amendments made to highway layout	AD	AD
H	19-08-10	Minor amendments made to mix of house types	AD	AD
G	18-08-10	Amendments made to remove flats and rearrange layout to 102 houses	AD	AD
F	26-07-10	Minor amendments made	AD	AD
E	26-07-10	Additional one bedroom flats (Plan Type L) added	AD	AD
D	26-07-10	Notes amended	AD	AD
C	26-07-10	One bedroom flats (Plan Type L) added to layout.	AD	AD
B	26-07-10	Street scene presentation	AD	AD
A	16-07-10	Amendments made to site and road layout	AD	AD
REV	DATE	DESCRIPTION	AD	AD

**MICHAEL HYDE AND ASSOCIATES LIMITED**  
*chartered architects*

MANCHESTER    SHEFFIELD

51 BARTON ARCADE    ALLIANCE HOUSE  
 DEANSGATE LEOPOLD STREET    SHEFFIELD S1 2GJ  
 MANCHESTER M3 2BJ    TEL 0114 275 9886  
 TEL 0161 834 1018    TEL 0114 275 9886  
 FAX 0161 834 1788    FAX 0114 275 7761  
 Manchester@MHA    Sheffield@MHA  
 architects.com    architects.com

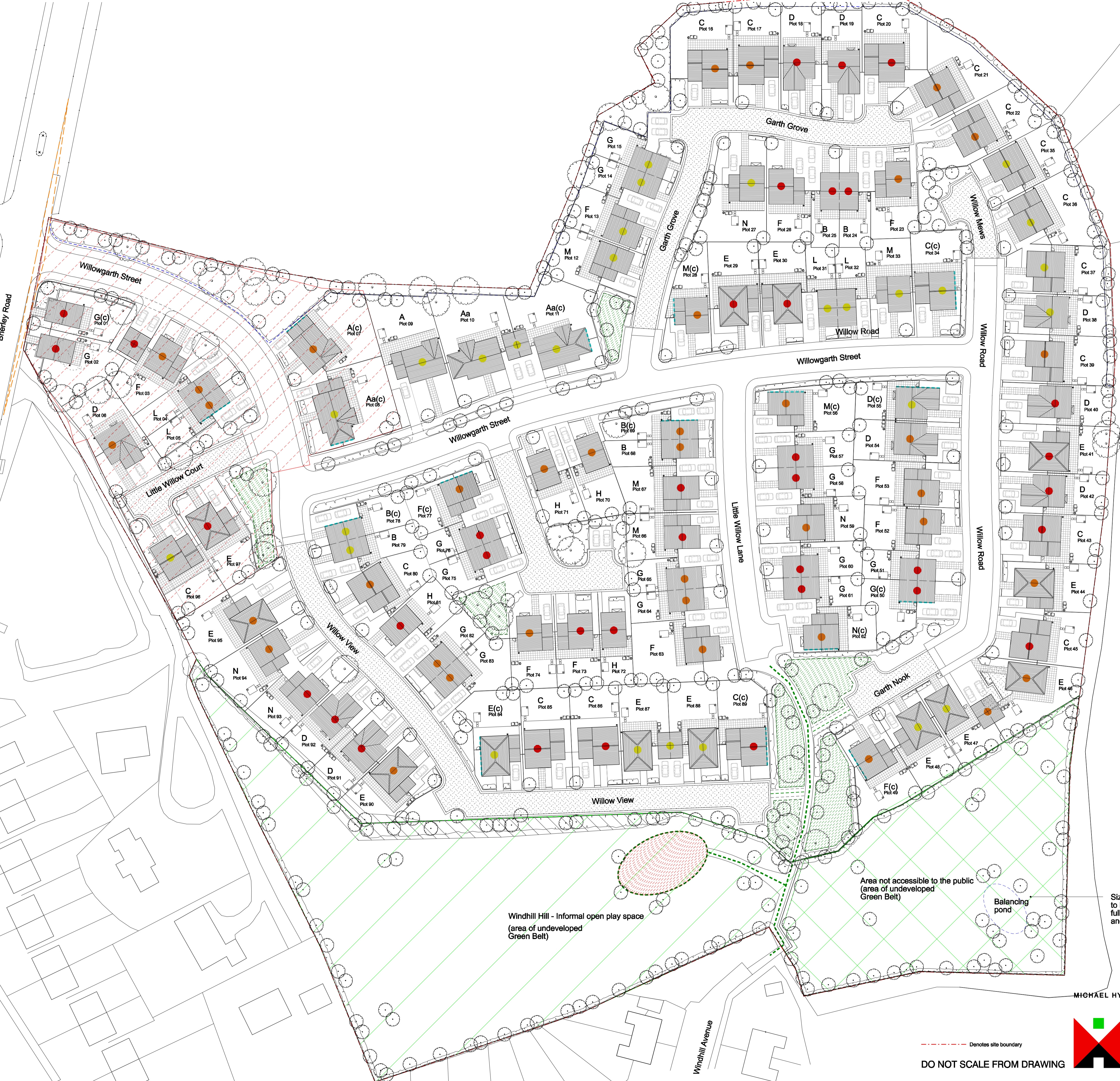
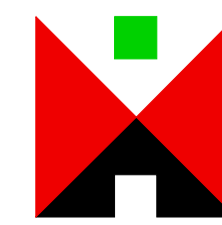
PROJECT TITLE  
**WILLOWGARTH FORMER SCHOOL SITE,  
 BRIERLEY ROAD, GRIMETHORPE**

DRAWING TITLE  
**PROPOSED SITE PLAN**

DRAWN/CHECKED	DATE	SCALE
AD/AD	JUN 2015	1:500 @ A1
JOB No	DRAWING	REVISIONS
3SC8	P101	P

--- Denotes site boundary

**DO NOT SCALE FROM DRAWING**



Size of balancing pond to be determined and fully detailed in formation and maintenance