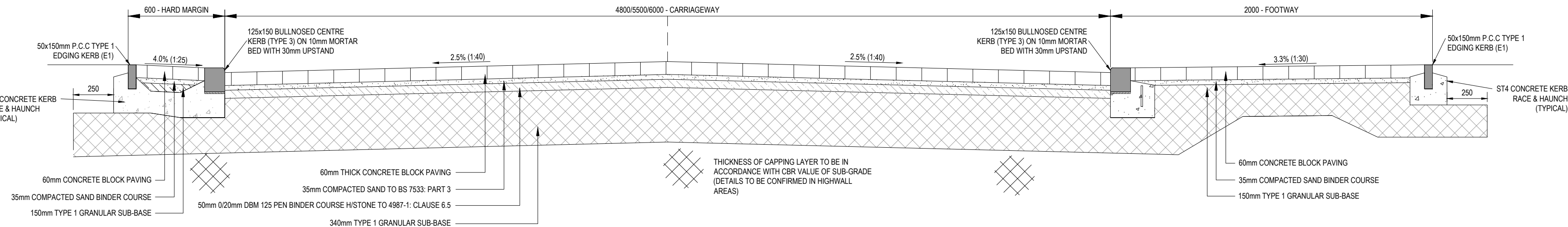


TYPICAL CROSS-SECTION THROUGH PROPOSED ROAD (CAMBERED) -

TARMAC

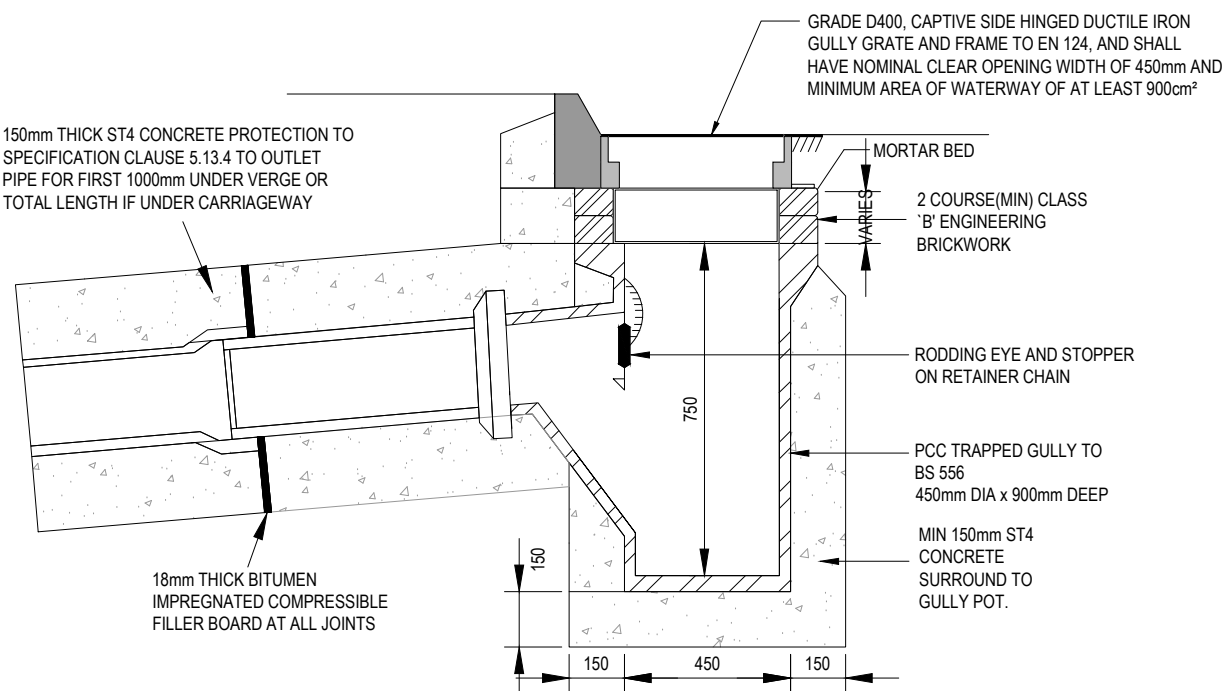
SCALE: 1:20



TYPICAL CROSS-SECTION THROUGH PROPOSED ROAD (CAMBERED) -

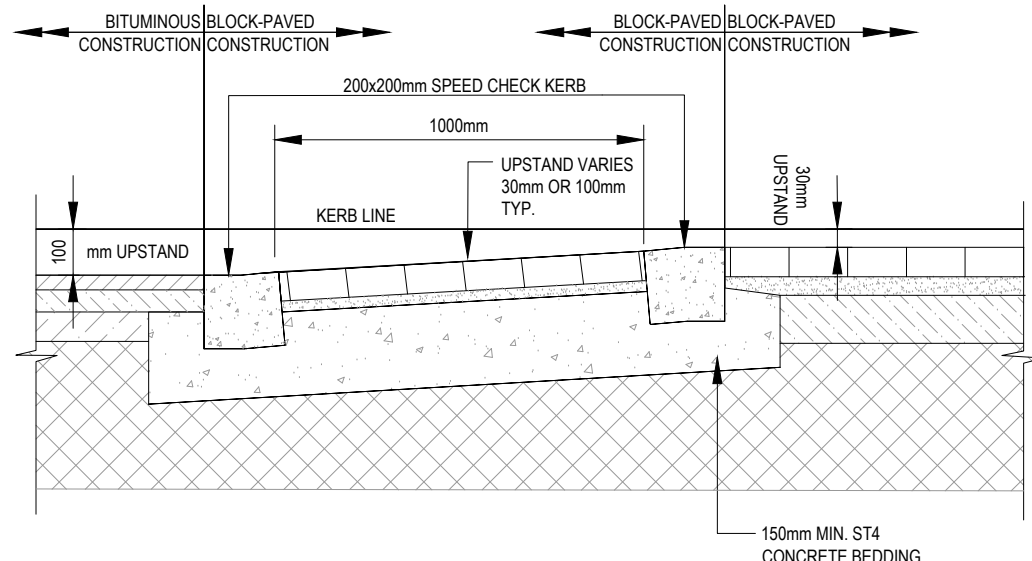
BLOCK-PAVING

SCALE: 1:20



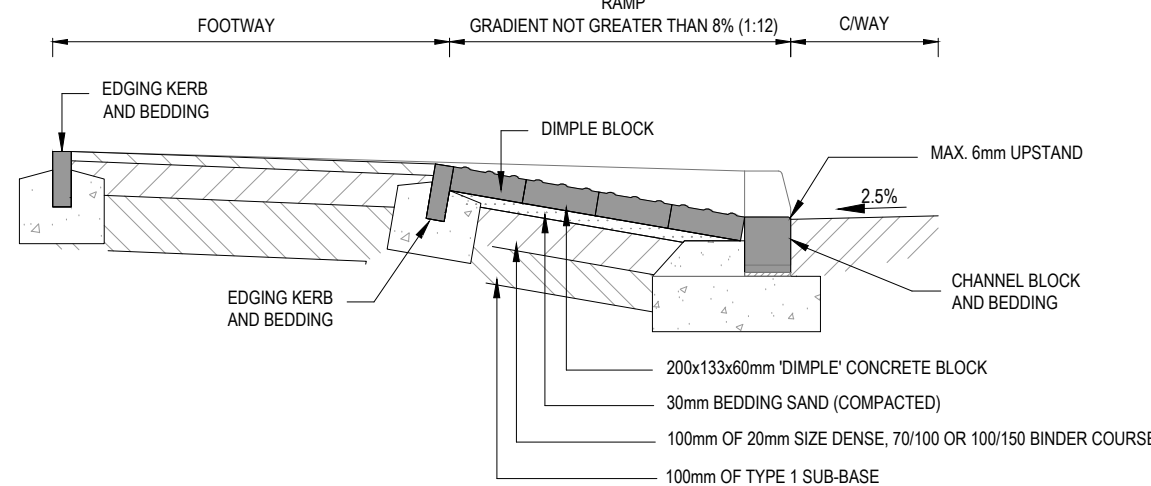
TRAPPED ROAD GULLY

SCALE 1:20



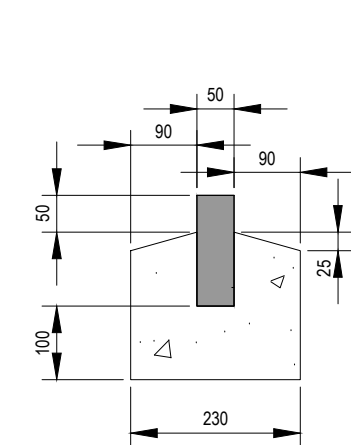
RAMP DETAIL

SCALE 1:20



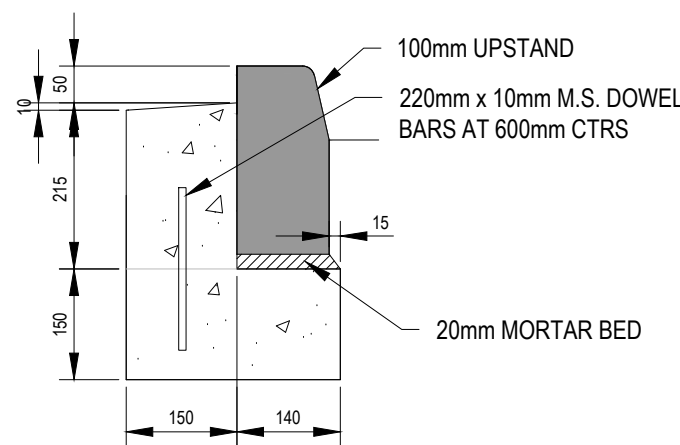
TYPICAL PEDESTRIAN
CROSSING DETAIL

SCALE 1:20



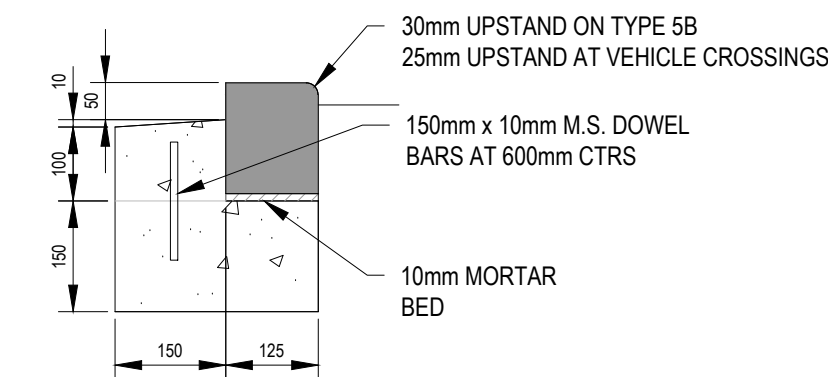
50x150 PCC EDGING KERB
DETAIL (E1) TYPE 1

SCALE 1:10



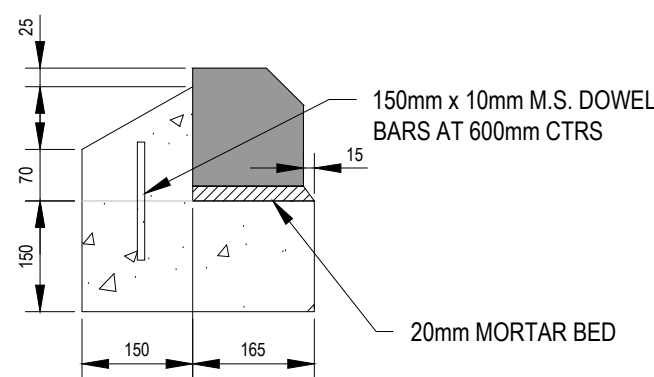
125x255 HALF BATTERED
KERB DETAIL (HB2)

SCALE 1:10



125x150 BULLNOSE CENTRE
KERB (TYPE 3)

SCALE 1:10



150x160 CHAMFERED
KERB SETT DETAIL

SCALE 1:10

ROAD CONSTRUCTION SPECIFICATION TO BE IN ACCORDANCE WITH REQUIREMENTS AS NOTED IN "PART 2: SPECIFICATION OF CONSTRUCTION MATERIALS AND STANDARD CONSTRUCTION DETAILS" DOCUMENT

CARRIAGEWAY CONSTRUCTION FOR TYPE 4 ROADS
(COLLECTOR AND LOCAL STREETS)

- SURFACE COURSE**
30mm CG SURFACE COURSE 125 PEN H/STONE TO BS 4987-1: CLAUSE 7.4
- BINDER COURSE**
50mm DBM 125 PEN BINDER COURSE H/STONE TO BS 4987-1: CLAUSE 6.5
- ROADBASE**
90mm DBM 125 PEN BASE L/STONE TO BS 4987-1: CLAUSE 5.2
- SUB-BASE**
THICKNESS IN ACCORDANCE WITH CBR VALUE OF SUB-GRADE OR 440mm TYPE 1 GRANULAR SUB-BASE IN ACCORDANCE WITH SPECIFICATION FOR HIGHWAY WORKS CLAUSE 803 (ANY VARIATION TO BE AGREED IN WRITING WITH THE ENGINEER)

CARRIAGEWAY CONSTRUCTION FOR TYPE 5A ROADS
(VILLAGE STREET)

- SURFACE COURSE**
25mm 0/6mm DBM 125 PEN SURFACE COURSE H/STONE TO BS 4987-1: CLAUSE 7.5
- BINDER COURSE**
50mm SAND 0/20mm DBM 125 PEN BINDER COURSE H/STONE TO BS 4987-1: CLAUSE 6.5
- BASE COURSE**
70mm 0/32mm DBM 125 PEN BASE L/STONE TO BS 4987-1: CLAUSE 5.2
- SUB-BASE**
THICKNESS IN ACCORDANCE WITH CBR VALUE OF SUB-GRADE OR 390mm TYPE 1 GRANULAR SUB-BASE (ANY VARIATION TO BE AGREED IN WRITING WITH THE ENGINEER)

SHARED SURFACE CONSTRUCTION FOR ACCESS WAYS/ ACCESS
COURT / MEWS COURT (TYPE 5B)

RECTANGULAR INTERLOCKING CONCRETE BLOCK PAVING

- SURFACE COURSE**
60mm CONCRETE BLOCK PAVING LAID ON SCREEDED LAYER 0/6mm DBM 125 PEN SURFACE COURSE H/STONE TO BS 4987-1: CLAUSE 7.5
- COLOUR OF BLOCKS TO BE RESTRICTED TO BUFF, RED, CHARCOAL AND BRINDLE (BROWN, GREY, RED)**
- LAYING COURSE**
35mm COMPACTED THICKNESS OF NATURALLY SAND TO BS 7533: PART 3
- BINDER COURSE**
50mm 0/20mm DBM 125 PEN BINDER BASE H/STONE TO BS 4987-1: CLAUSE 6.5
- SUB-BASE**
THICKNESS IN ACCORDANCE WITH CBR VALUE OF SUB-GRADE OR 340mm TYPE 1 GRANULAR SUB-BASE (ANY VARIATION TO BE AGREED IN WRITING WITH THE ENGINEER)

FOOTPATHS, FOOTWAYS AND FOOTWAY VEHICLE CROSSINGS
CONSTRUCTION

- SURFACE**
25mm 0/6mm DBM 190 PEN SURFACE COURSE L/STONE TO BS 4987-1: CLAUSE 7.5 OR 25mm 0/4mm FG 190 PEN SURFACE COURSE L/STONE TO BS 4987-1: CLAUSE 7.7
- BINDER**
55mm 0/20mm DBM 190 PEN BINDER COURSE L/STONE TO BS 4987-1: CLAUSE 6.5
- SUB-BASE**
150mm TYPE 1 GRANULAR SUB-BASE

CONCRETE BLOCK PAVING MAY BE USED AS AN ALTERNATIVE:

- SURFACE**
60mm BLOCK (PENCIL EDGE)
- BINDER**
35mm COMPACTED SAND TO BS 7533-3
- SUB-BASE**
150mm TYPE 1 GRANULAR SUB-BASE

NOTE: SURFACE COURSE MUST BE BONDED TO THE BINDER COURSE.

TACK COAT

PRIOR TO LAYING SUBSEQUENT LAYERS OF BITUMINOUS MATERIAL, THE SURFACE SHALL BE THOROUGHLY CLEANED PRIOR TO THE APPLICATION AND THE EMULSION ALLOWED TO 'BREAK' PRIOR TO INTRODUCING FURTHER LAYERS OF CONSTRUCTION. THE TACK COAT OF BITUMEN EMULSION TO COMPLY WITH BS 534:987:2010 CL 5.5. THE BOND COAT SHALL COMPLY WITH BS EN 13808:2005, TABLE 4, CL 4 AND APPLIED IN ACCORDANCE WITH BS594987:2010 CL

GENERAL SAFETY NOTES:


- WHERE THE BASE (ROAD BASE) HAS BEEN USED AS A TEMPORARY RUNNING SURFACE DURING THE CONTRACT IT SHALL BE THOROUGHLY CLEANED AND POWER WASHED AS NECESSARY. AFTER DRYING AND IMMEDIATELY BEFORE THE BINDER COURSE IS LAD A TACK COAT OF BITUMEN EMULSION CLASS A140 OR K140 TO BS544 SHALL BE APPLIED AT A RATE OF 0.35-0.55 LITRES/SQ METER.
- ALL RADIUS KERBS WITH A RADIUS OF 1m UNLESS SHALL BE FORMED WITH PROPRIETARY RADIUS KERBS.
- HEALTH & SAFETY:**
 - CONTRACTOR SHOULD BE AWARE OF GENERAL CONSTRUCTION RISKS TO PREVENT SLIPS, TRIPS AND FALLS AND TAKE NECESSARY PRECAUTIONS WITHOUT SPECIAL INSTRUCTION.
 - CONTRACTOR TO PROVIDE TRENCH SUPPORTS AS APPROPRIATE AND ENSURE THAT PLANT REMAINS A SAFE DISTANCE FROM TRENCHES PRIOR TO INSTALLING DRAINAGE.
 - THE TIME THAT EXCAVATIONS ARE OPEN ON SITE SHOULD BE KEPT TO A MINIMUM AND ALL TRENCHES SHOULD BE SURROUNDED BY A BARRIER.
 - CONNECTIONS TO EXISTING SEWERS TO BE MADE BY APPROVED CONTRACTOR ONLY.
 - CONTRACTOR TO MAKE OPERATIVES AWARE OF ASSOCIATED DANGERS TO HEALTH SUCH AS LEPTOSPIROSIS (WELLS DISEASE) AND RECOMMENDED PRECAUTIONS. ADEQUATE WELFARE FACILITIES AND PROTECTIVE CLOTHING TO BE PROVIDED AS REQUIRED.
 - UNFINISHED MANHOLES MUST BE COVERED WITH LOAD BEARING MATERIALS AND SURROUNDED WITH BARRIER.
 - CONTRACTOR TO OBTAIN ALL SERVICE RECORDS PRIOR TO WORKS COMMENCING.
 - SERVICE RECORDS TO BE REFERRED TO PRIOR TO WORK COMMENCING. CONTRACTOR TO PROCEED WITH CAUTION AND SERVICES TO BE LOCATED BY HAND DIG AND PROTECTED ACCORDINGLY.
 - EXCAVATION/FILL**
 - CONTRACTOR TO ENSURE RELEVANT MEASURES ARE TAKEN TO KEEP PLANT AND PEOPLE A SAFE DISTANCE FROM STEEP SLOPES DURING THE WORKS.
 - CONTRACTOR TO ENSURE THAT PROCEDURES ARE IN PLACE TO KEEP PEOPLE A SAFE DISTANCE FROM WORKING PLANT WHERE NECESSARY.
 - CONTRACTOR TO REFER TO GROUND INVESTIGATION REPORT FOR CONTAMINATION TESTS AND TO PROVIDE ADEQUATE WELFARE FACILITIES AND PROTECTIVE CLOTHING AS REQUIRED.

DESIGN NOTES

- ALL DESIGN AND WORKS TO COMPLY WITH CURRENT VERSION OF THE FOLLOWING DOCUMENTS:
 - DESIGN MANUAL FOR ROADS AND BRIDGES (DMRB)
 - SPECIFICATION FOR HIGHWAY WORKS (SHW) AND
 - SOUTH YORKSHIRE RESIDENTIAL DESIGN GUIDE
 - BARNLEY METROPOLITAN BOROUGH COUNCIL (BMBC) SPECIFICATION
- ALL DIMENSIONS IN MILLIMETRES UNLESS STATED OTHERWISE.
- READ IN CONJUNCTION WITH ALL RELEVANT DRAWINGS.
- PRECAST CONCRETE KERBS AND EDGINGS TO BS 7263.
- CONCRETE BED AND BACKING TO GRADE ST3 TO BN 206, LAID IN ACCORDANCE WITH CLAUSE 2602 OF MCHW.
- MORTAR BED CLASS 1 TO CLAUSE 2404 MCHW; THICKNESS 10-40mm TO CLAUSE 1101 MCHW.
- CONSIDERATION MUST BE GIVEN TO TOLERANCES EXISTING FOR BOTH KERBS AND SURFACING.
- ELECTRICAL INSPECTION CHAMBERS AND TRENCHES SHOULD BE PLACED OUTSIDE OF THE LINE OF PEDESTRIAN USE WHEREVER POSSIBLE.
- CBR TESTING TO BE CARRIED OUT TO CONFIRM THE CBR OF THE EXISTING MATERIALS. CONTRACTOR TO ALLOW FOR CBR TESTS AT 50m CTRS STAGGERED ABOUT THE CENTRE LINE OF THE ROAD PROPOSED. CONSTRUCTION MATERIALS AND DEPTHS SUBJECT TO CHANGE FOLLOWING CBR TESTING. LOC TO CONFIRM ACCEPTANCE OF CARRIAGEWAY CONSTRUCTION PRIOR TO LAYING OF ANY MATERIALS.
- ALL SIGNS AND LINE MARKINGS ARE TO BE AGREED WITH THE HIGHWAYS OFFICER PRIOR TO CONSTRUCTION.

HIGHWAY CONSTRUCTION IN HIGHWALL AREAS TO BE
AGREED SUBJECT TO FURTHER SITE INVESTIGATION

SUBJECT TO APPROVAL BY
LOCAL AUTHORITY

16.12.2022	MINOR REVISIONS. NOTE ADDED	P.A.S.	R.P.B.	2	
16.11.2022	FIRST ISSUE	P.A.S.	R.P.B.	1	
Date	Revisions	Drawn	Checked	Rev	
Dwg Status	PRELIMINARY				
<div><div>NORTH EAST 0191 2586532</div><div>YORKSHIRE 0115 3322600</div></div> <div><div>CONSULTING ENGINEERS</div><div>WWW.RWO.GROUP INFO@RWO.GROUP</div></div>					
Client	YELCON LIMITED				
Project	WOODWALK, BARNLEY				
Title	HIGHWAY CONSTRUCTION DETAILS				
DO NOT SCALE	Scale @ A1: 1:20	Drawn	P.A.S.	Checked R.P.B.	Date 11.11.2022
Job No	Y19072	Dwg No	D700	Rev	2