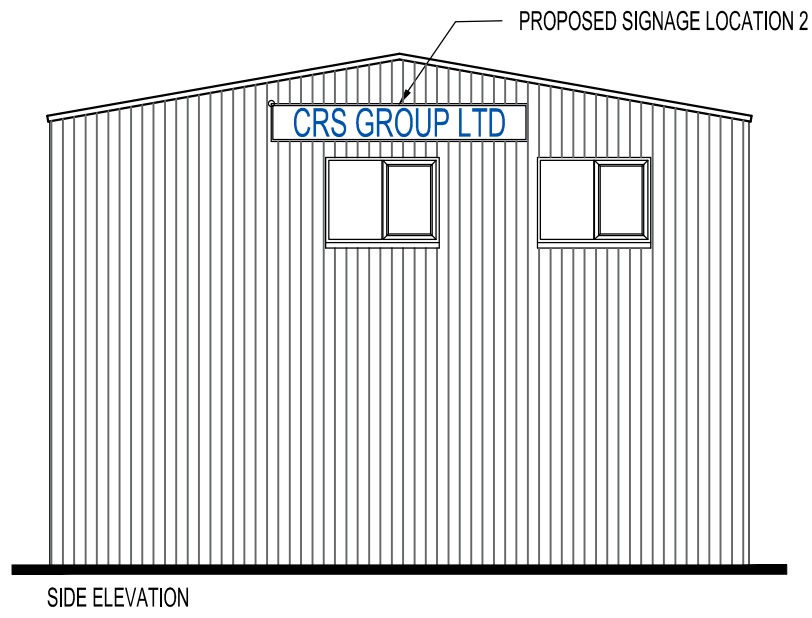


FRONT ELEVATION



SIDE ELEVATION

ADVERTISEMENT 1



HEIGHT FROM GROUND TO BASE OF ADVERTISEMENT: 2800mm
 MAXIMUM PROJECTION FROM FACE OF BUILDING: 25mm
 MAXIMUM TEXT HEIGHT: 400mm
 WHAT MATERIAL IS THE SIGN MADE OF: ALUMINUM COMPOSITE
 COLOUR OF TEXT AND BACKGROUND: BLUE ON WHITE

ADVERTISEMENT 2



HEIGHT FROM GROUND TO BASE OF ADVERTISEMENT: 5600mm
 MAXIMUM PROJECTION FROM FACE OF BUILDING: 25mm
 MAXIMUM TEXT HEIGHT: 400mm
 WHAT MATERIAL IS THE SIGN MADE OF: ALUMINUM COMPOSITE
 COLOUR OF TEXT AND BACKGROUND: BLUE ON WHITE

REV	DATE	BY	DESCRIPTION
-	23.02.20	CC	FIRST ISSUE

<small>Pure Offices, 4100 Park Approach, Thorpe Park, Leeds, LS15 8GB T:07950290925 E:info@artreum.co.uk www.artreum.co.uk</small>		
CLIENT:	CRS FUTURE BUILD LTD	
PROJECT:	Valley Road, Wombwell	
TITLE:	PROPOSED ADVERTISEMENT	
SCALE @ A3: 1:100 & 1:50	DWG No: 1003-01-04	REV: -