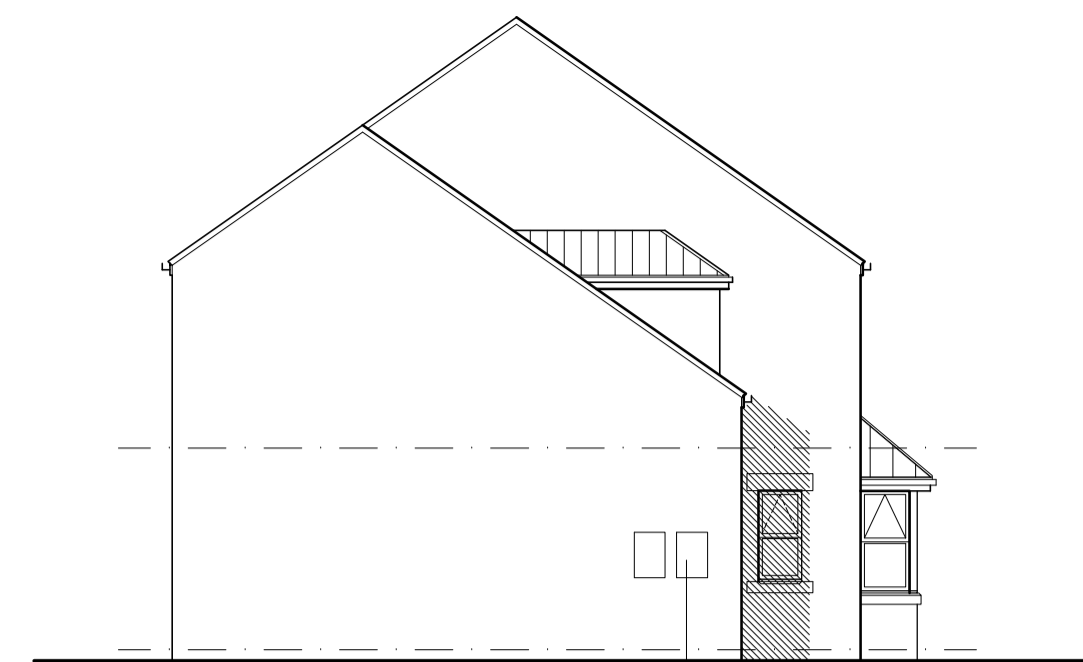
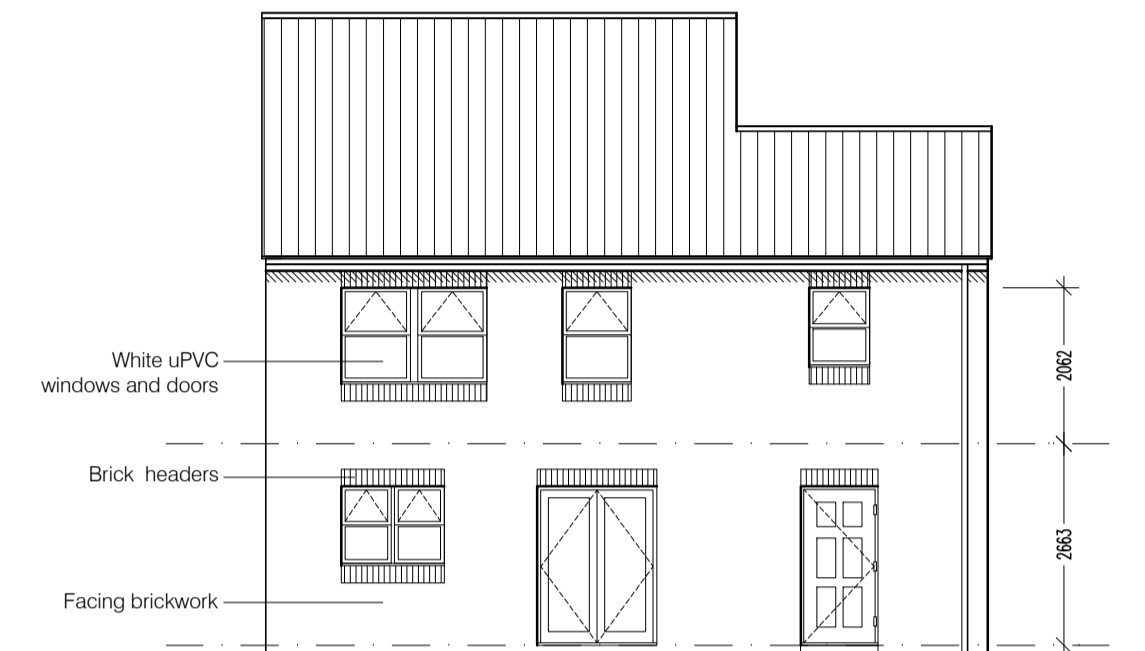




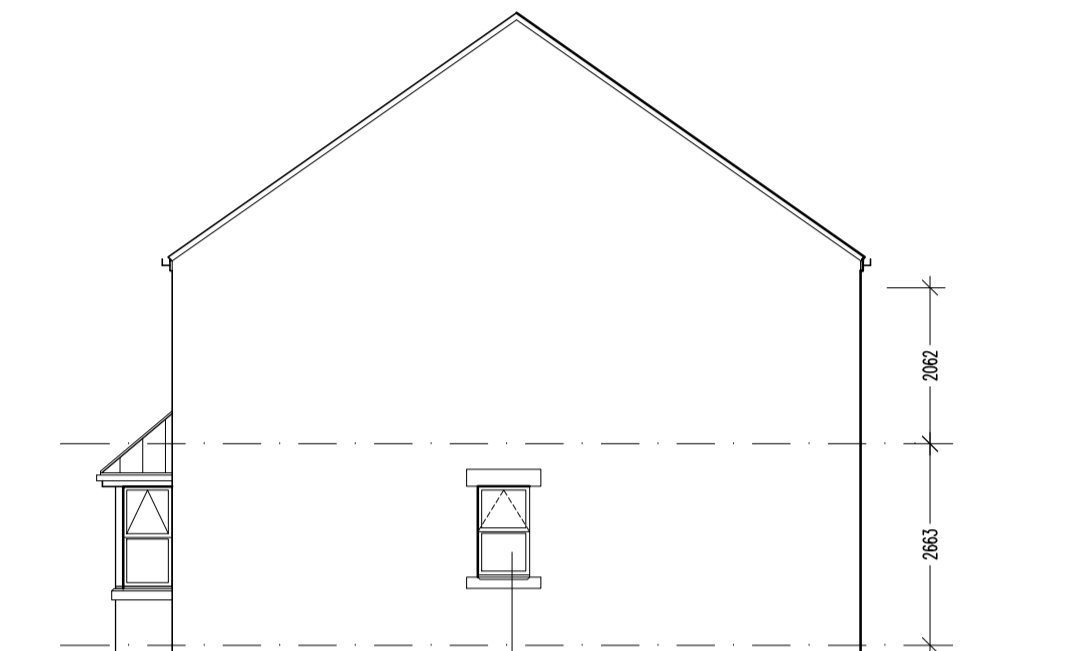
Front Elevation



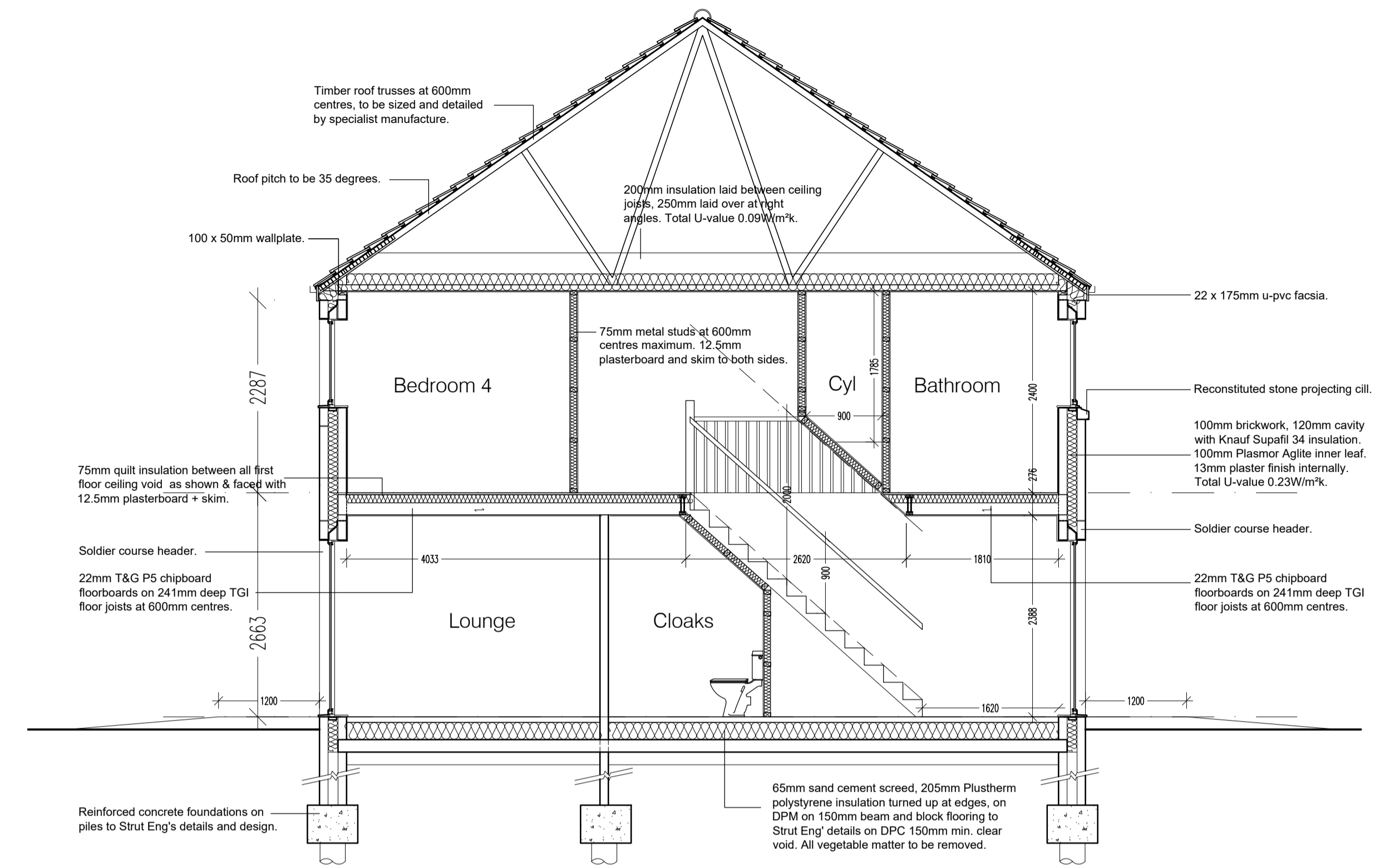
Side Elevation



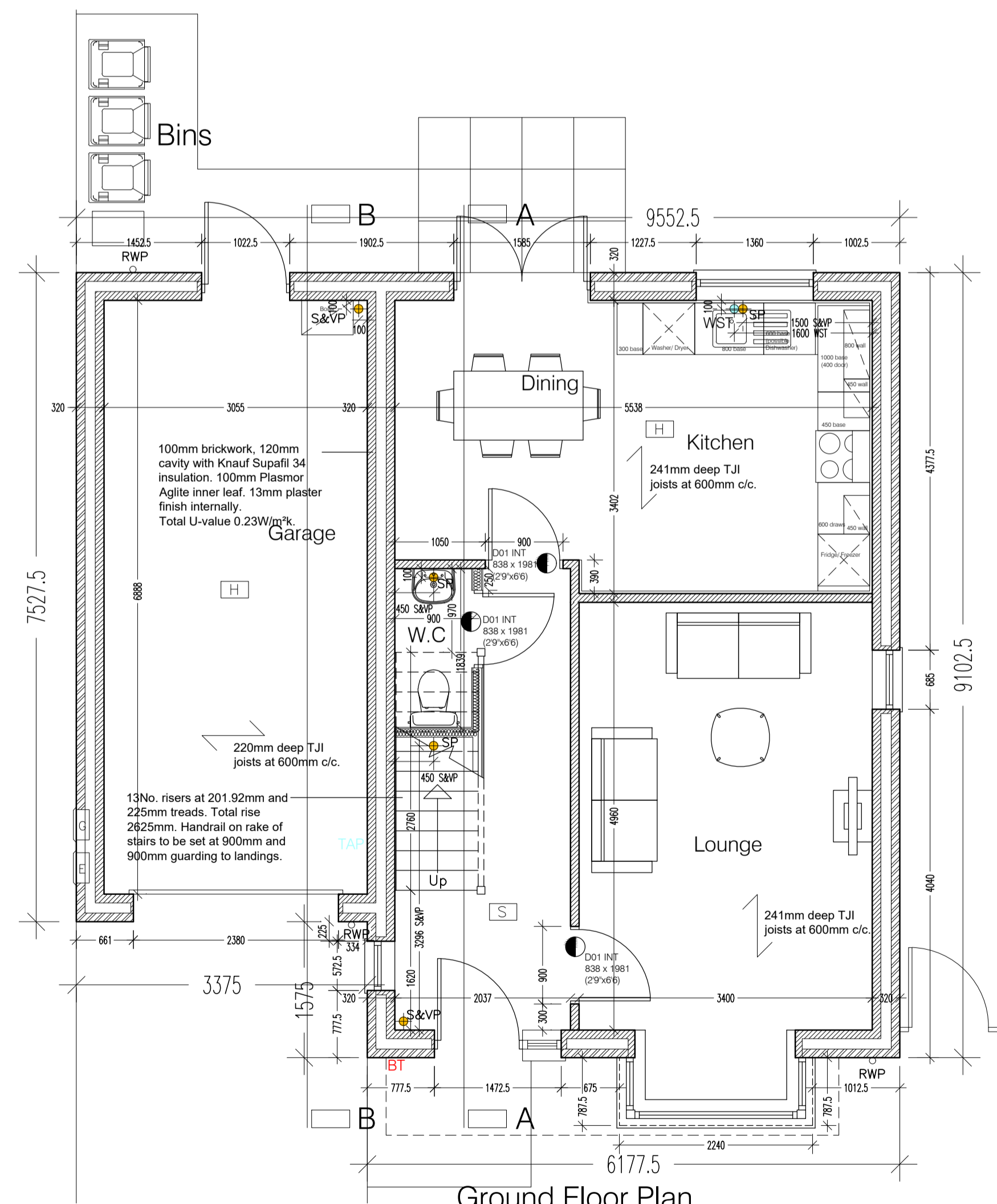
Rear Elevation



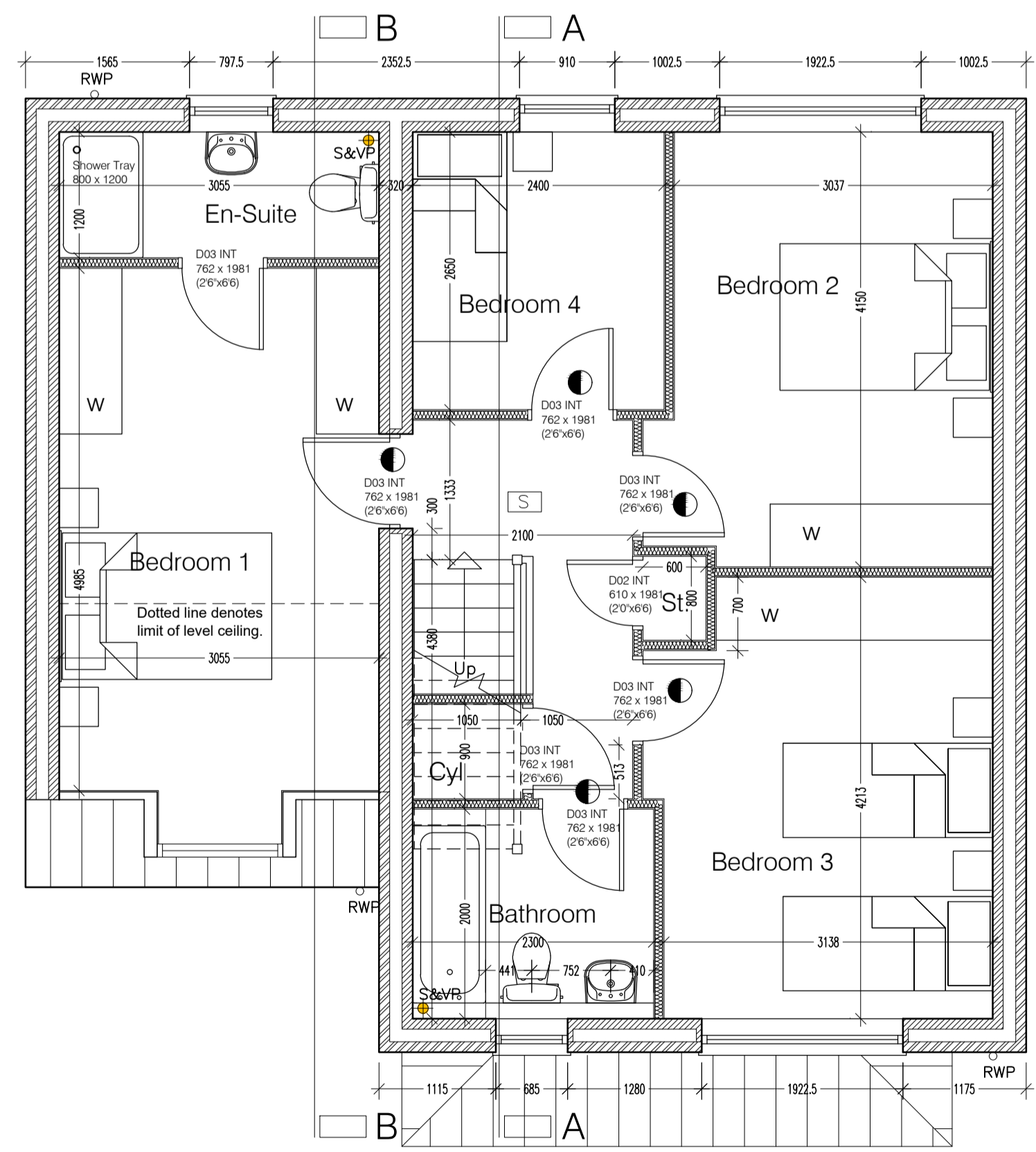
Side Elevation



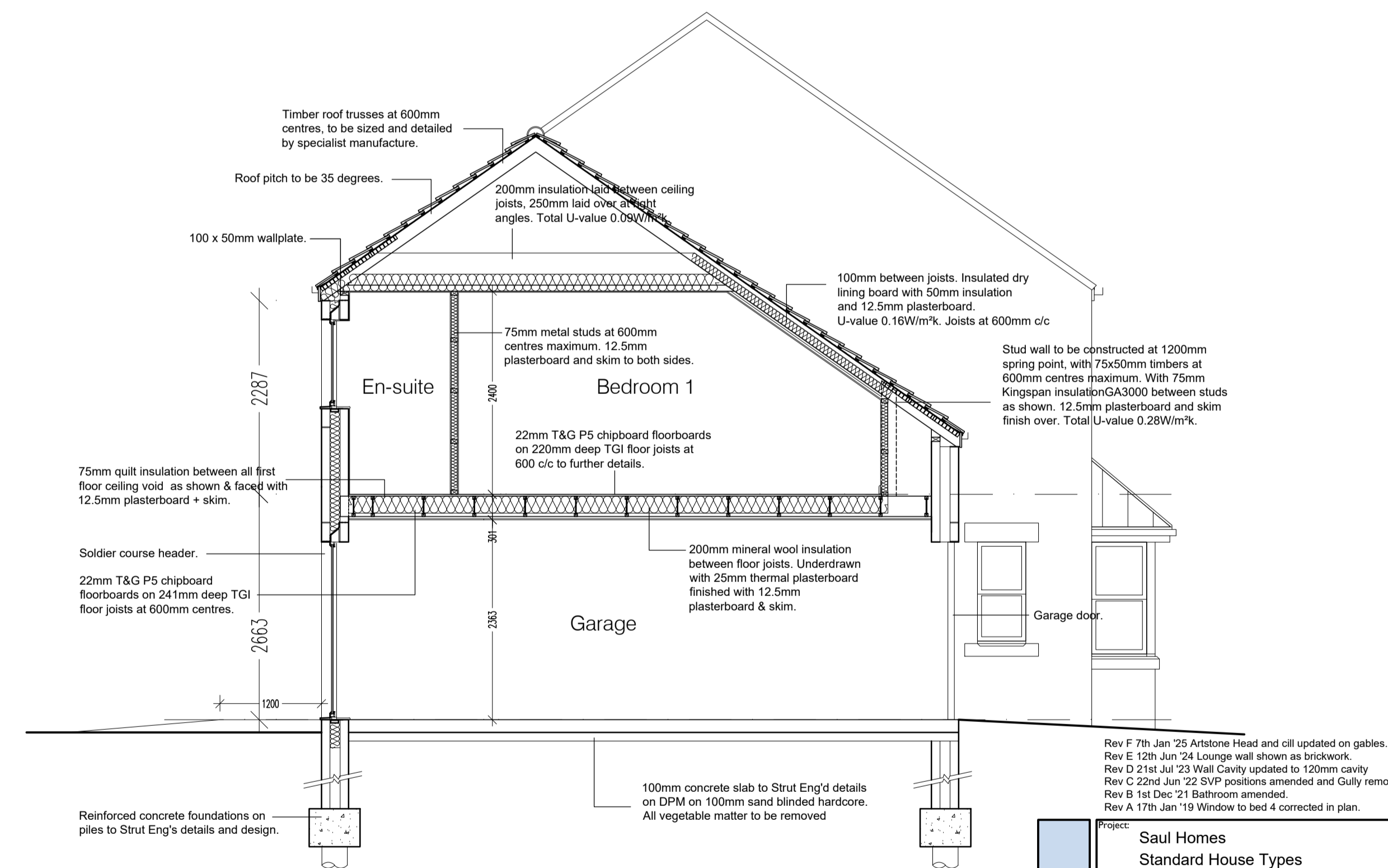
Section A-A



Ground Floor Plan



First Floor Plan



Section B-B

Rev F 7th Jan '25 Arstone Head and sill updated on gables.
 Rev E 12th Jun '24 Lounge wall shown as brickwork.
 Rev D 21st Jul '23 Wall Cavity updated to 120mm cavity
 Rev C 22nd Jun '22 SVP positions amended and Gully removed
 Rev B 1st Dec '21 Bathroom amended.
 Rev A 17th Jan '19 Window to bed 4 corrected in plan.

Project: Saul Homes Standard House Types

Title: House Type 'Chestnut' Ground and First Floor Plan Elevations & Sections A-A & B-B

Scale: 1:50/100@A1 **Drawn:** PU **Date:** 10/17 **Checked:**

Drawing no.: SH / ST / 10 **Rev:** F

Project: Saul Homes Standard House Types

Location: Burnwood Office Park, Common Road, Brierley, Barnsley, S72 9ET

Contact: T: 01226 707090, F: 01226 707091, info@saulhomes.co.uk, www.saulhomes.co.uk

SAUL HOMES

Residential Development at Doncaster Road, Darfield, Barnsley

Type Chestnut - 4 Bedroom 2 storey