

Notes:

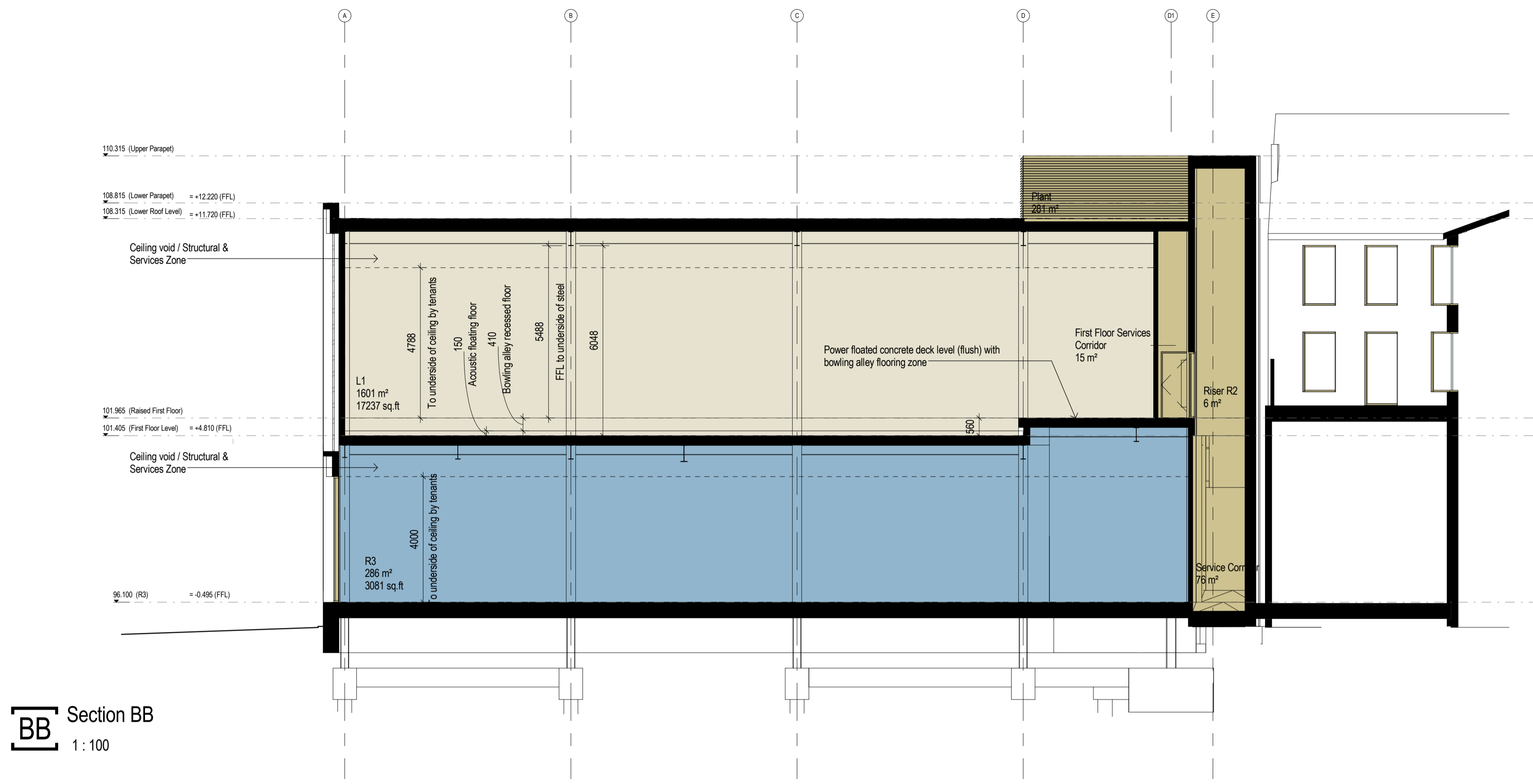
- This drawing is copyright.
- Do not scale dimensions from this drawing.
- This drawing is to be read in conjunction with all other relevant drawings.
- All discrepancies on this drawing are to be reported to the architect.
- Do not modify any element of this drawing.
- Use drawing only for purposes(s) issued.

North Sign / Key Plan

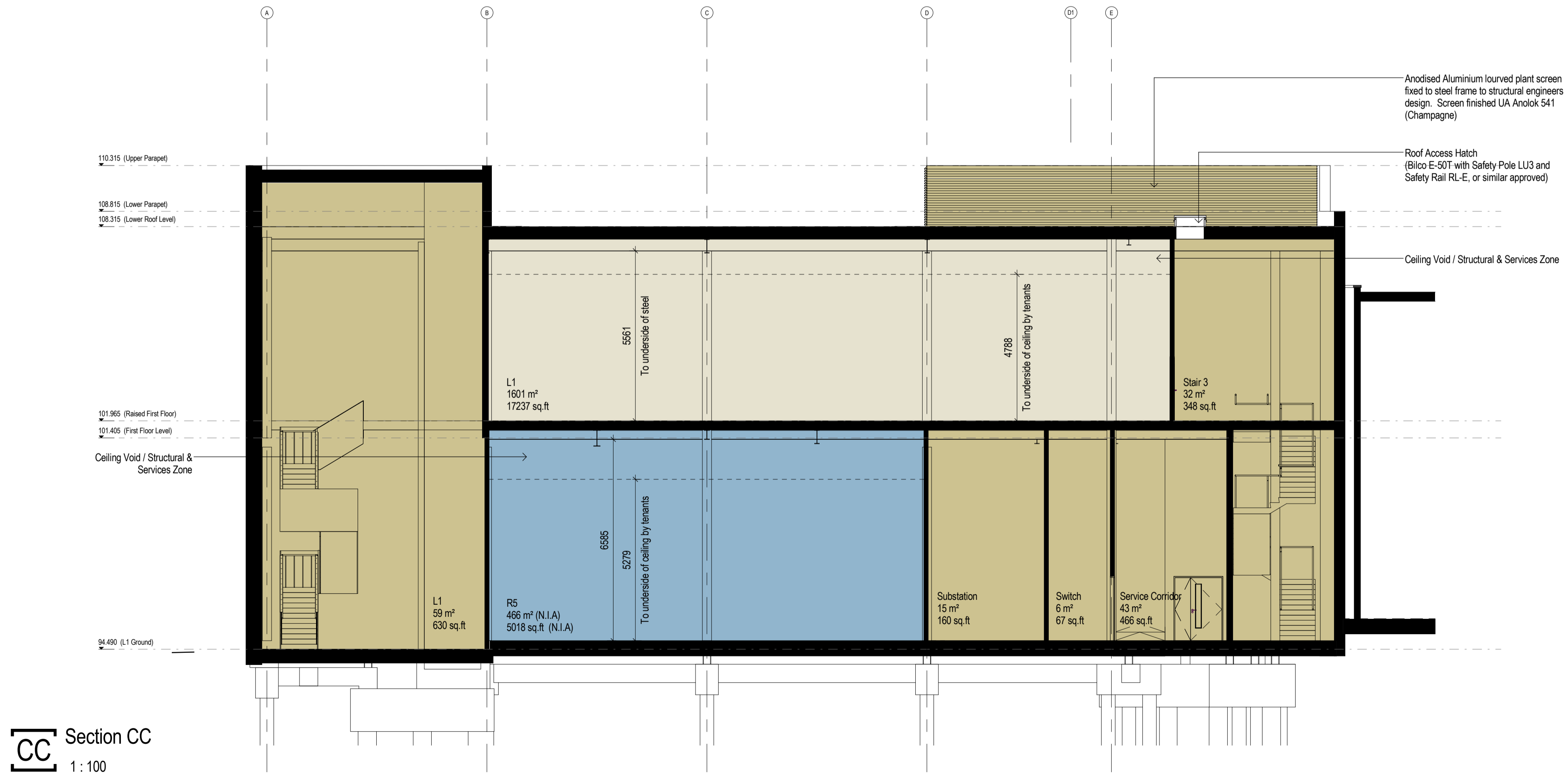
0 2 4 6 8m  
1:100 Scale @ A1

The following external model files are included within this drawing:

Medium Shopping Unit (A1-Retail)	Leisure - Other (D2)
Shopping Unit (A1-Retail)	MSCP
Restaurant (A3-Food and Drink)	Ancillary
Leisure - Cinema (D2)	



**BB** Section BB  
1 : 100



**CC** Section CC  
1 : 100

Rev	Date	Revision Notes	Dr	Rv
12	12/04/17	Planning Issue	PM	EA
11	03/02/17	Stage 3 Pricing Issue	PM	EA
10	23/12/16	Initial Stage 3 Issue	SCa	AG
9	13/12/16	Internal layouts developed following structural design review and review of sub-station location - Sub-station repositioned. Goods lift omitted following confirmation of Superbowl UK lift requirements. Escape stairs replanned. Roof plant area extended to suit structure. External door positions updated to suit revised layout.	SCa	SL
8	02/12/16	Coordination Issue	EA	SL
7	22/08/16	Phase 2 Final Release	CS	SL
6	12/8/16	Canterleaver Option removed, Internal Partitions for Unit Sizes Amended and Unit Levels Updated	CS	SL
5	10/8/16	First Floor Canterleaver Option Added	CS	SL
4	04/8/16	Dimensions Added	CS	SL
3	03/8/16	R2 Area updated and General Updates	CS	SL
2	02/8/16	Second Floor Removed and Ceiling Heights Amended	CS	SL
1	29/7/16	Phase 2 Release and Revision Number Update	CS	SL

Client  
**Turner and Townsend**

**IBI** Intelligence Buildings Infrastructure  
www.ibigroup.com

Project  
**Better Barnsley Town Centre Phase 2**

Drawing Title  
**Sections BB and CC DS2**

Job Number <b>50727</b>	Drawing Originated Date <b>Nov 2016</b>	PAS 1192 Status Code
Scale@A1 <b>As indicated</b>	Purpose <b>Planning</b>	
Drawing Number <b>BBTC_IBI_D2_A_F100_SE_BC</b>	Revision <b>12</b>	